

固定支架、导轨固定件、圆管固定件

- DIN 标准导轨固定件根据 DIN EN 60715 TH35 和 G32
- 用于安装于圆管的卡夹，直径至 $\varnothing 32 \text{ mm}$ 或标准导轨根据 DIN EN ISO 19054



按客户要求修改加工

如何体现您的特殊产品？如有需要，我们执行所有必要的修改和精加工，提供组装完毕的机盒。
产品类型用于 固定支架、导轨固定件、圆管固定件



机械加工



图文打印于机盒



激光打印字体



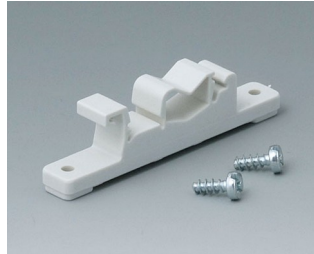
制备 / 组装

固定支架、导轨固定件、圆管固定件

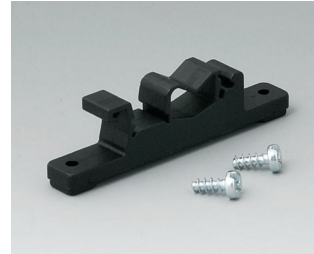
类型



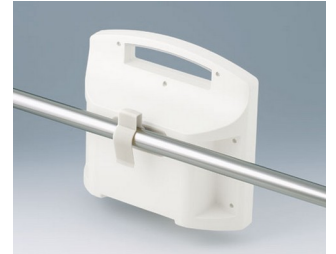
A9325018
Pole/mast mounting bracket
ASA (UL 94 HB)
anthracite grey RAL 7016
100x100x20mm



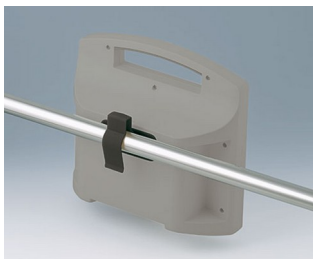
B1300017
Fastening element for DIN-Rails
PA 6
off-white RAL 9002



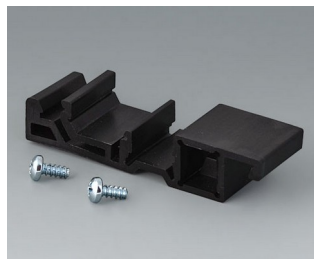
B1300019
Fastening element for DIN-Rails
PA 6
black RAL 9005



B4308237
Holding clamps
PA 6
off-white RAL 9002



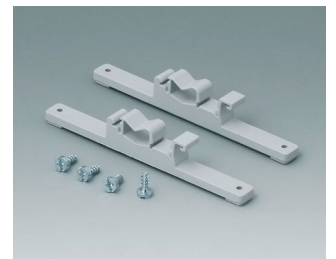
B4308238
Holding clamps
PA 6
lava



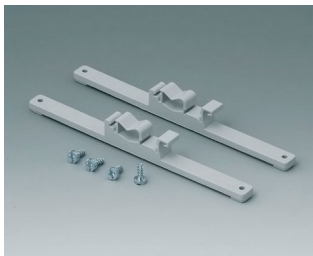
B6811751
DIN rail adapter
PA 66 (UL 94 V-0)
black RAL 9005



C2201088
Fastening elements to DIN-Rails
PA 6
light grey RAL 7035



C2203128
Fastening elements to DIN-Rails
PA 6
light grey RAL 7035



C2204168
Fastening elements to DIN-Rails
PA 6
light grey RAL 7035

保留技术更改可能性。 © OKW 机盒系统, Buchen/德国。