

RAILTEC C 型导轨盒 C

模块化 DIN 标准导轨盒和组装件

广泛的机盒产品系列并适配 DIN 标准 EN 60715 的导轨盒或直接安装于墙壁。该系列还包括个性化组装件，通过简单的接头界面更换达到更大的灵活性。

- 所有类型的组装和连接工作都提供了最高度的组装简便性
- 耐应力和耐高温性能优异的材料 (UL 94 V-0)
- 通过简便的卡扣安装锁定机盒部件
- **RAILTEC C 型导轨盒:** 适配接线端子排、插针排和前置插头; 可选框架用于额外的电路板安置; 前面板和盒盖提供不同的款式; 1-12 个模块宽度; 适配 DIN 导轨 EN 60715 TH35; 电路板在所有 3 个空间方向的定位; 用于 TH15 和 G32 (1-4 个模块) 的适配器作为附件

类型 I 前面敞开，接线端面畅通，
无通风槽

类型 II 前面敞开，接线端面畅通，
带通风槽

类型 III 前面敞开，接线端面的盒壁延长，
无通风槽

类型 IV 前面封闭，接线端面畅通，
无通风槽

- **RAILTEC SUPPORT 型导轨盒 SUPPORT:** 用于独特组装的模块化组装件; 适配 DIN 标准导轨 EN 60715 TH35, TH15 和 G32
- 防护等级 < IP 40

RAILTEC C 型导轨盒 C



按客户要求修改加工

如何体现您的特殊产品？如有需要，我们执行所有必要的修改和精加工，提供组装完毕的机盒。
产品类型用于 Railtec C 型导轨盒 C



机械加工



表面涂渡



图文打印于机盒



激光打印字体



装饰膜



制备 / 组装

RAILTEC C 型导轨盒 C

类型



B6700100
RAILTEC C, 1 module, Vers. I
PC (UL 94 V-0)
light grey
17.5x90x58mm



B6700102
RAILTEC C, 1 module, Vers. II
PC (UL 94 V-0)
light grey
17.5x90x58mm



B6700104
RAILTEC C, 1 module, Vers. III
PC (UL 94 V-0)
light grey
17.5x90x58mm



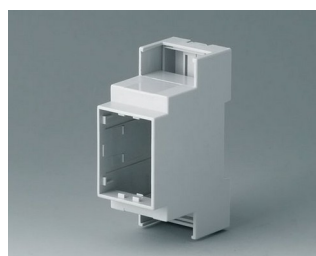
B6700106
RAILTEC C, 1 module, Vers. IV
PC (UL 94 V-0)
light grey
17.5x90x58mm



B6701100
RAILTEC C, 2 modules, Vers. I
PC (UL 94 V-0)
light grey
36x90x58mm



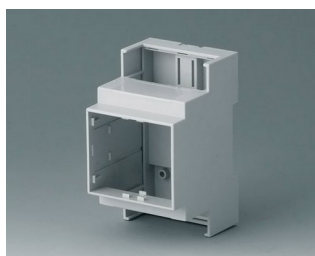
B6701102
RAILTEC C, 2 modules, Vers. II
PC (UL 94 V-0)
light grey
36x90x58mm



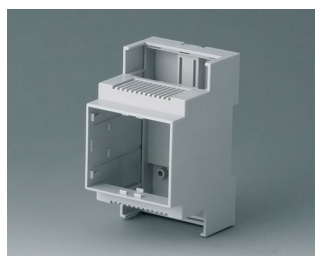
B6701104
RAILTEC C, 2 modules, Vers. III
PC (UL 94 V-0)
light grey
36x90x58mm



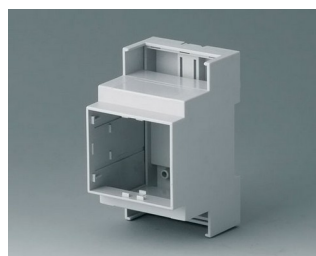
B6701106
RAILTEC C, 2 modules, Vers. IV
PC (UL 94 V-0)
light grey
36x90x58mm



B6702100
RAILTEC C, 3 modules, Vers. I
PC (UL 94 V-0)
light grey
53x90x58mm



B6702102
RAILTEC C, 3 modules, Vers. II
PC (UL 94 V-0)
light grey
53x90x58mm



B6702104
RAILTEC C, 3 modules, Vers. III
PC (UL 94 V-0)
light grey
53x90x58mm



B6702106
RAILTEC C, 3 modules, Vers. IV
PC (UL 94 V-0)
light grey
53x90x58mm



B6703100
RAILTEC C, 4 modules, Vers. I
PC (UL 94 V-0)
light grey
71x90x58mm



B6703102
RAILTEC C, 4 modules, Vers. II
PC (UL 94 V-0)
light grey
71x90x58mm

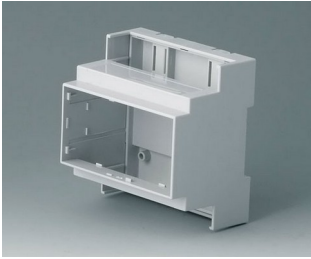


B6703104
RAILTEC C, 4 modules, Vers. III
PC (UL 94 V-0)
light grey
71x90x58mm

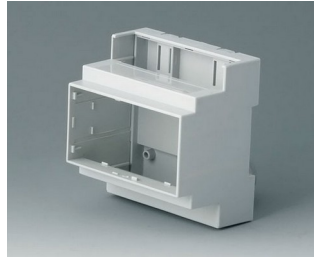


B6703106
RAILTEC C, 4 modules, Vers. IV
PC (UL 94 V-0)
light grey
71x90x58mm

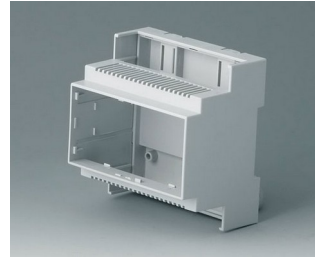
RAILTEC C 型导轨盒 C



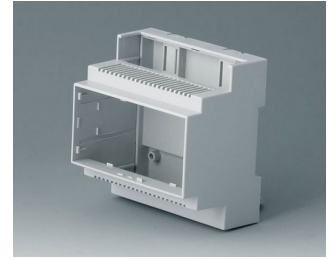
B6704100
RAILTEC C, 5 modules, Vers. I
PC (UL 94 V-0)
light grey
88x90x58mm



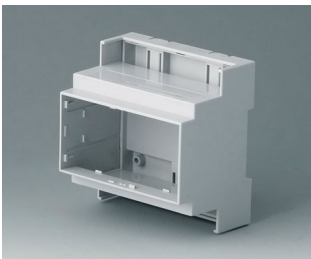
B6704101
RAILTEC C, 5 modules, Vers. I
PC (UL 94 V-0)
light grey
88x90x58mm



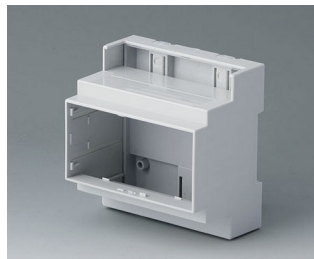
B6704102
RAILTEC C, 5 modules, Vers. II
PC (UL 94 V-0)
light grey
88x90x58mm



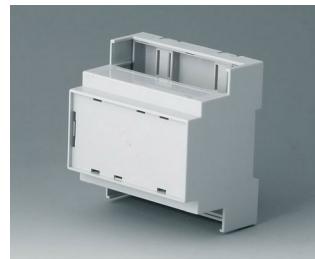
B6704103
RAILTEC C, 5 modules, Vers. II
PC (UL 94 V-0)
light grey
88x90x58mm



B6704104
RAILTEC C, 5 modules, Vers. III
PC (UL 94 V-0)
light grey
88x90x58mm



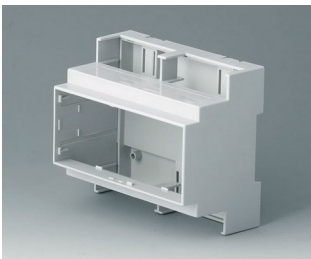
B6704105
RAILTEC C, 5 modules, Vers. III
PC (UL 94 V-0)
light grey
88x90x58mm



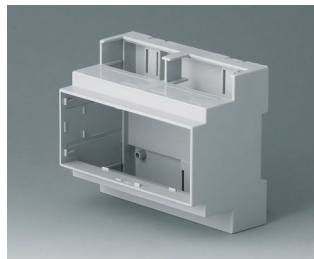
B6704106
RAILTEC C, 5 modules, Vers. IV
PC (UL 94 V-0)
light grey
88x90x58mm



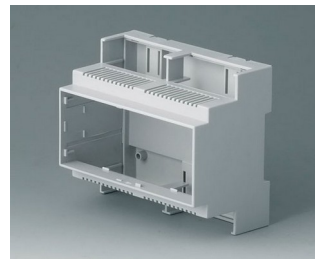
B6704107
RAILTEC C, 5 modules, Vers. IV
PC (UL 94 V-0)
light grey
88x90x58mm



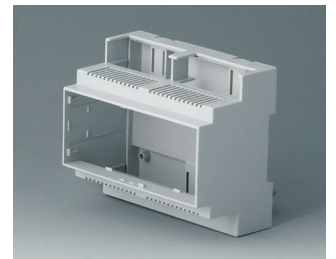
B6705100
RAILTEC C, 6 modules, Vers. I
PC (UL 94 V-0)
light grey
106x90x58mm



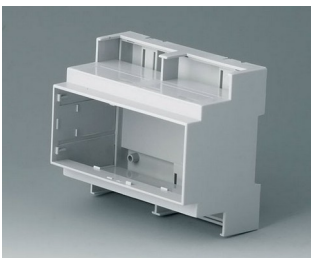
B6705101
RAILTEC C, 6 modules, Vers. I
PC (UL 94 V-0)
light grey
106x90x58mm



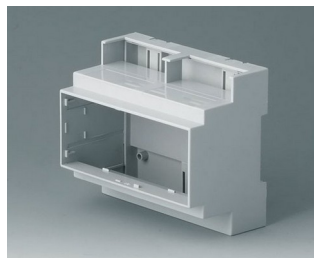
B6705102
RAILTEC C, 6 modules, Vers. II
PC (UL 94 V-0)
light grey
106x90x58mm



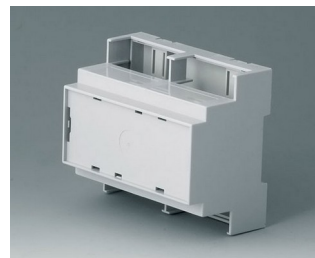
B6705103
RAILTEC C, 6 modules, Vers. II
PC (UL 94 V-0)
light grey
106x90x58mm



B6705104
RAILTEC C, 6 modules, Vers. III
PC (UL 94 V-0)
light grey
106x90x58mm



B6705105
RAILTEC C, 6 modules, Vers. III
PC (UL 94 V-0)
light grey
106x90x58mm

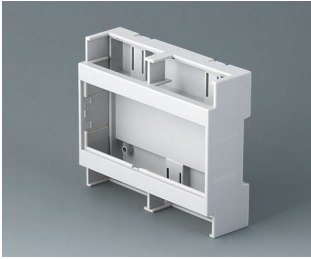


B6705106
RAILTEC C, 6 modules, Vers. IV
PC (UL 94 V-0)
light grey
106x90x58mm



B6705107
RAILTEC C, 6 modules, Vers. IV
PC (UL 94 V-0)
light grey
106x90x58mm

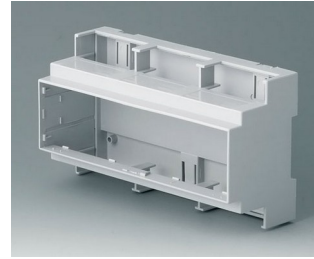
RAILTEC C 型导轨盒 C



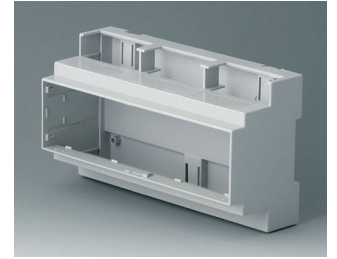
B6705800
RAILTEC C, 6 modules, flat,
Vers. I
PC (UL 94 V-0)
light grey
106.2x90x32mm



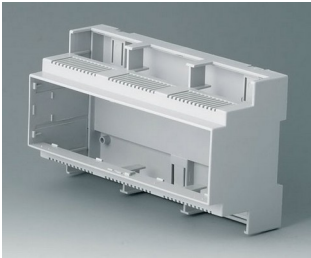
B6705806
RAILTEC C, 6 modules, flat,
Vers. IV
PC (UL 94 V-0)
light grey
106.2x90x32mm



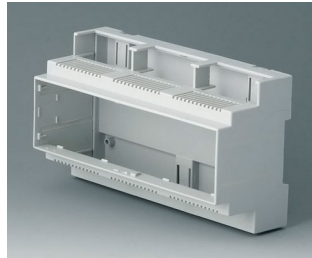
B6706100
RAILTEC C, 9 modules, Vers. I
PC (UL 94 V-0)
light grey
160x90x58mm



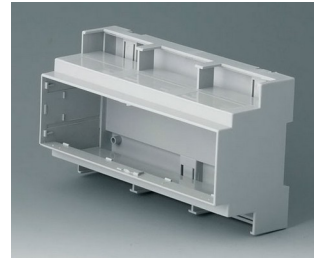
B6706101
RAILTEC C, 9 modules, Vers. I
PC (UL 94 V-0)
light grey
160x90x58mm



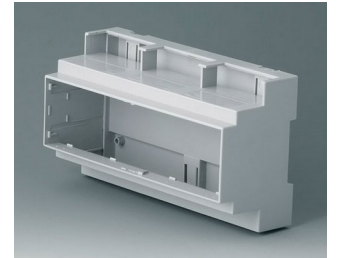
B6706102
RAILTEC C, 9 modules, Vers. II
PC (UL 94 V-0)
light grey
160x90x58mm



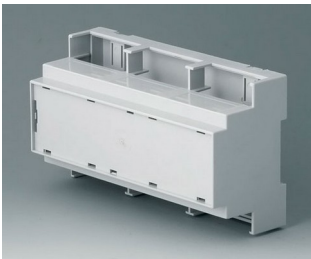
B6706103
RAILTEC C, 9 modules, Vers. II
PC (UL 94 V-0)
light grey
160x90x58mm



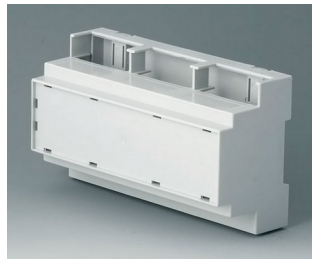
B6706104
RAILTEC C, 9 modules, Vers. III
PC (UL 94 V-0)
light grey
160x90x58mm



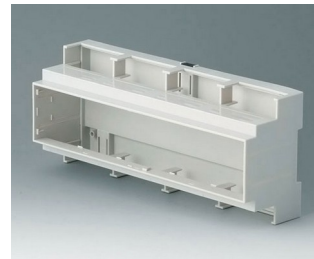
B6706105
RAILTEC C, 9 modules, Vers. III
PC (UL 94 V-0)
light grey
160x90x58mm



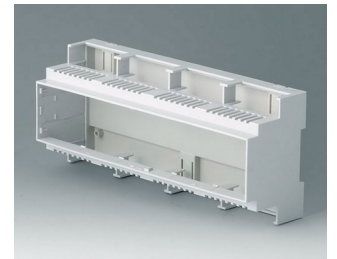
B6706106
RAILTEC C, 9 modules, Vers. IV
PC (UL 94 V-0)
light grey
160x90x58mm



B6706107
RAILTEC C, 9 modules, Vers. IV
PC (UL 94 V-0)
light grey
160x90x58mm



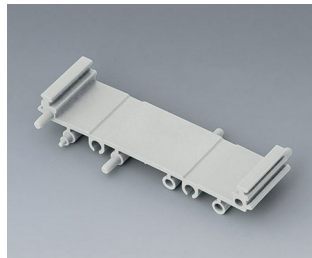
B6707100
RAILTEC C, 12 modules, Vers. I
PC (UL 94 V-0)
light grey
210x90x58mm



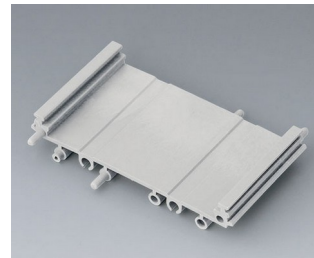
B6707102
RAILTEC C, 12 modules, Vers. II
PC (UL 94 V-0)
light grey
210x90x58mm



B6724330
RAILTEC SUP. 72, intermediate
part
PA 6 (30) (UL 94 V-0)
light grey
82x11.25x16mm



B6724331
RAILTEC SUP. 72, intermediate
part
PA 6 (30) (UL 94 V-0)
light grey
82x22.5x16mm



B6724332
RAILTEC SUP. 72, intermediate
part
PA 6 (30) (UL 94 V-0)
light grey
82x45x16mm

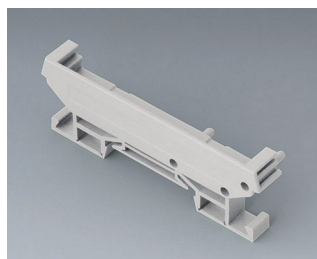


B6724333
RAILTEC SUP. 72, end section
PA 6 (30) (UL 94 V-0)
light grey
82x11.25x16mm

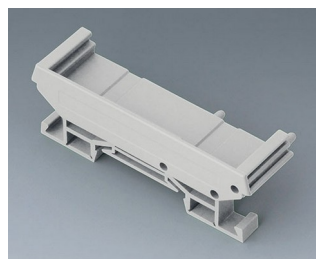
RAILTEC C 型导轨盒 C



B6724334
RAILTEC SUP. 72, end section
PA 6 (30) (UL 94 V-0)
light grey
82x22.2x16mm



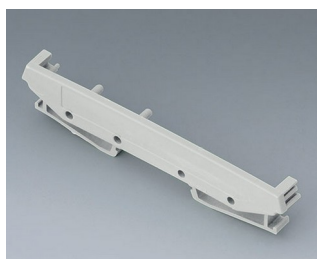
B6724335
RAILTEC SUP. 72, end section
with foot
PA 6 (30) (UL 94 V-0)
light grey
82x11.2x22.5mm



B6724336
RAILTEC SUP. 72, end section
with foot
PA 6 (30) (UL 94 V-0)
light grey
82x22.2x22.5mm

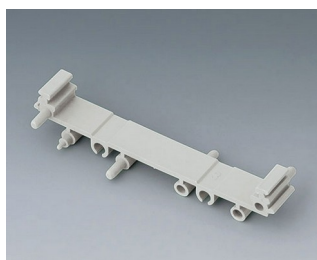


B6724444
RAILTEC SUP. 107, end section
PA 6 (30) (UL 94 V-0)
light grey
118x11.5x17.5mm

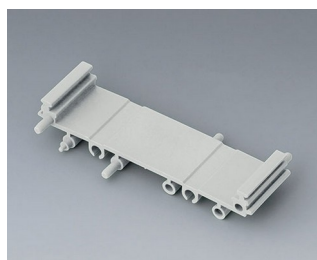


B6724445
RAILTEC SUP. 107, end section
with foot
PA 6 (30) (UL 94 V-0)
light grey
118x11.5x27.5mm

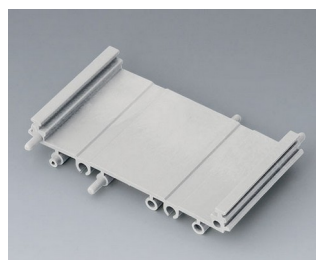
系统组件使产品完整



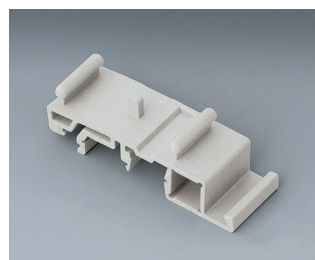
B6724330
RAILTEC SUP. 72, intermediate
part
PA 6 (30) (UL 94 V-0)
light grey
82x11.25x16mm



B6724331
RAILTEC SUP. 72, intermediate
part
PA 6 (30) (UL 94 V-0)
light grey
82x22.5x16mm

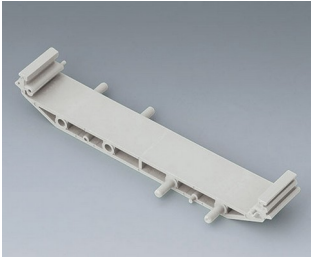


B6724332
RAILTEC SUP. 72, intermediate
part
PA 6 (30) (UL 94 V-0)
light grey
82x45x16mm

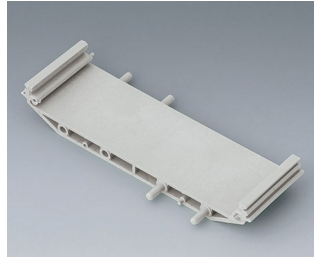


B6724337
RAILTEC SUP. 72, foot
PA 6 (30) (UL 94 V-0)
light grey

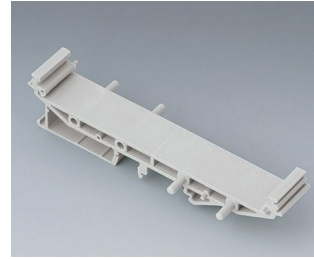
RAILTEC C 型导轨盒 C



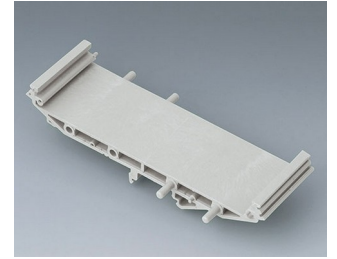
B6724440
RAILTEC SUP. 107, intermediate part
PA 6 (30) (UL 94 V-0)
light grey
118x18.5x17.5mm



B6724441
RAILTEC SUP. 107, intermediate part
PA 6 (30) (UL 94 V-0)
light grey
118x35x17.5mm

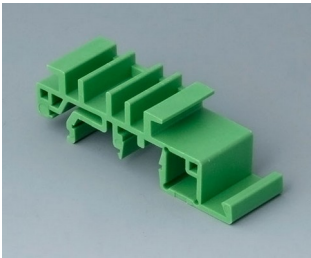


B6724442
RAILTEC SUP. 107, intermediate p. + foot
PA 6 (30) (UL 94 V-0)
light grey
118x18.5x27.5mm



B6724443
RAILTEC SUP. 107, intermediate p. + foot
PA 6 (30) (UL 94 V-0)
light grey
118x35x27.5mm

“挂墙支架” 配件



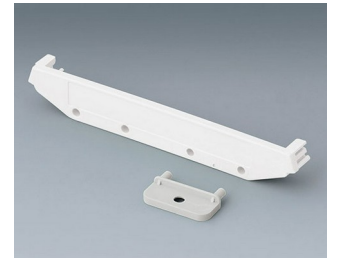
B6811542
Adapter
PA 6 (UL 94 V-0)
green



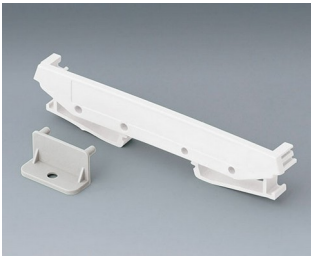
B6824532
Wall suspension element for SUP. 72
PA 6 (30) (UL 94 V-0)
light grey



B6824533
Wall suspension element with foot, SUP.
PA 6 (30) (UL 94 V-0)
light grey

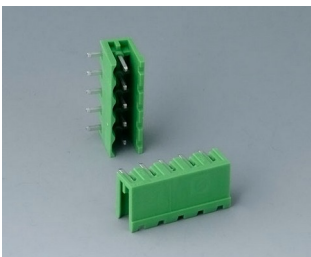


B6824542
Wall suspension element for SUP. 107
PA 6 (30) (UL 94 V-0)
light grey

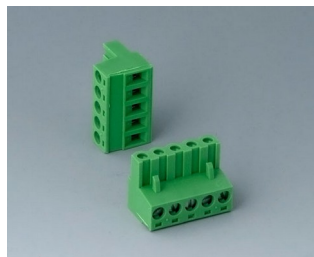


B6824543
Wall suspension element with foot, SUP.
PA 6 (30) (UL 94 V-0)
light grey

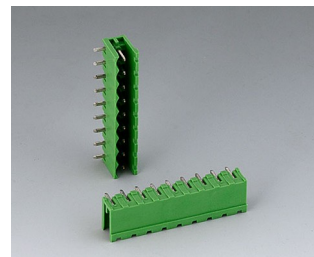
“端子” 配件



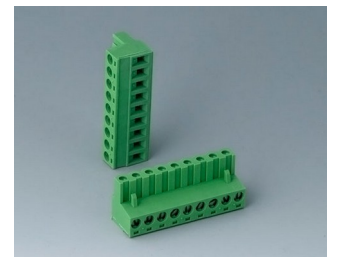
B6601222
Plug header, block 5.08
PA 6 (UL 94 V-0)



B6601223
Plug header, block 5.08
PA 6 (UL 94 V-0)

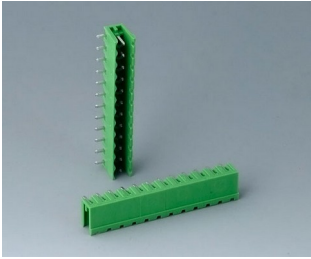


B6602222
Plug header, block 5.08
PA 6 (UL 94 V-0)

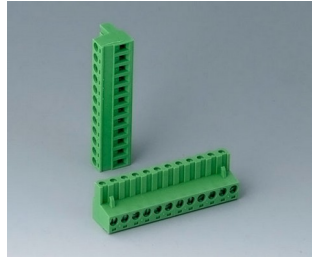


B6602223
Plug header, block 5.08
PA 6 (UL 94 V-0)

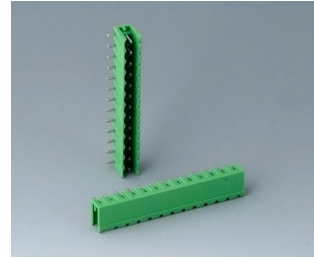
RAILTEC C 型导轨盒 C



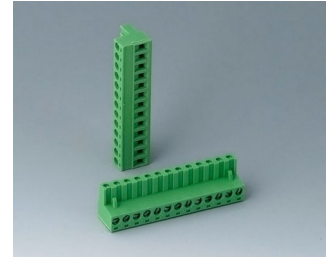
B6603222
Plug header, block 5.08
PA 6 (UL 94 V-0)



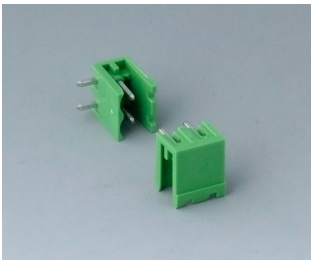
B6603223
Plug header, block 5.08
PA 6 (UL 94 V-0)



B6605222
Plug header, block 5.08
PA 6 (UL 94 V-0)



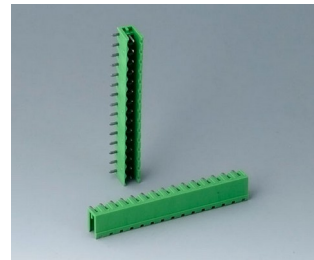
B6605223
Plug header, block 5.08
PA 6 (UL 94 V-0)



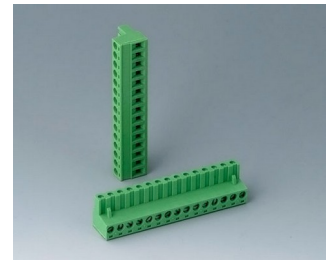
B6606222
Plug header, block 5.08
PA 6 (UL 94 V-0)



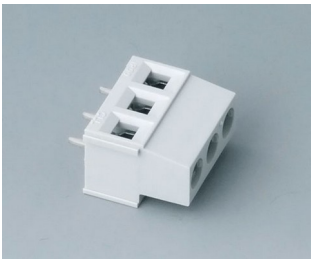
B6606223
Plug header, block 5.08
PA 6 (UL 94 V-0)



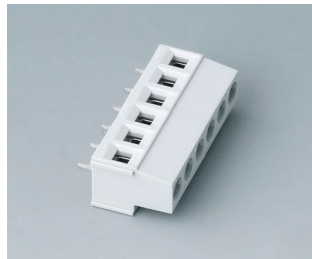
B6607222
Plug header, block 5.08
PA 6 (UL 94 V-0)



B6607223
Plug header, block 5.08
PA 6 (UL 94 V-0)



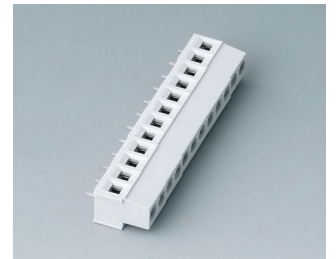
B6800650
Terminal block, block 5.08
PA 68 (UL 94 V-0)
light grey



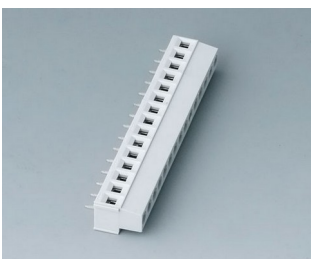
B6801650
Terminal block, block 5.08
PA 68 (UL 94 V-0)
light grey



B6802650
Terminal block, block 5.08
PA 68 (UL 94 V-0)
light grey



B6803650
Terminal block, block 5.08
PA 68 (UL 94 V-0)
light grey



B6804650
Terminal block, block 5.08
PA 68 (UL 94 V-0)
light grey

RAILTEC C 型导轨盒 C

“端子盖” 配件



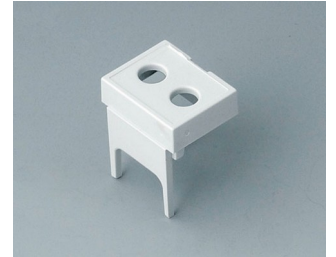
B6800111
Terminal guards, closed
PC (UL 94 V-0)
light grey



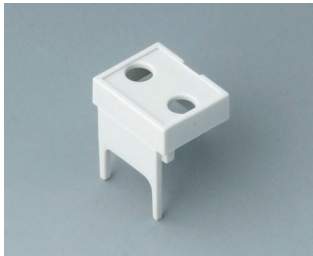
B6800112
Terminal guards, perforated,
5.08
PC (UL 94 V-0)
light grey



B6800113
Terminal guards, with holes, 5.08
PC (UL 94 V-0)
light grey



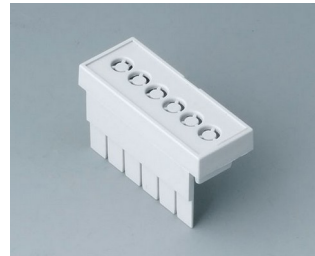
B6800114
Terminal guards, with holes, 7.5
& 7.62
PC (UL 94 V-0)
light grey



B6800115
Terminal guards, with holes,
10.16
PC (UL 94 V-0)
light grey



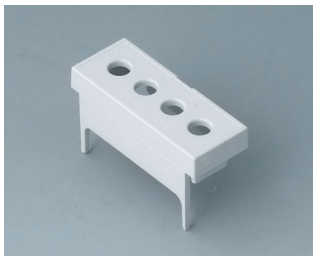
B680111
Terminal guards, closed
PC (UL 94 V-0)
light grey



B680112
Terminal guards, perforated,
5.08
PC (UL 94 V-0)
light grey



B680113
Terminal guards, with holes, 5.08
PC (UL 94 V-0)
light grey



B680114
Terminal guards, with holes, 7.5
& 7.62
PC (UL 94 V-0)
light grey



B680115
Terminal guards, with holes,
10.16
PC (UL 94 V-0)
light grey



B680211
Terminal guards, closed
PC (UL 94 V-0)
light grey



B680212
Terminal guards, perforated,
5.08
PC (UL 94 V-0)
light grey



B680213
Terminal guards, with holes, 5.08
PC (UL 94 V-0)
light grey



B680214
Terminal guards, with holes, 7.5
& 7.62
PC (UL 94 V-0)
light grey

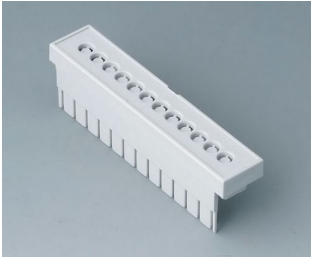


B680215
Terminal guards, with holes,
10.16
PC (UL 94 V-0)
light grey



B680311
Terminal guards, closed
PC (UL 94 V-0)
light grey

RAILTEC C 型导轨盒 C



B6803112
Terminal guards, perforated,
5.08
PC (UL 94 V-0)
light grey



B6803113
Terminal guards, with holes, 5.08
PC (UL 94 V-0)
light grey



B6803114
Terminal guards, with holes, 7.5
& 7.62
PC (UL 94 V-0)
light grey



B6803115
Terminal guards, with holes,
10.16
PC (UL 94 V-0)
light grey



B6804111
Terminal guards, closed
PC (UL 94 V-0)
light grey



B6804112
Terminal guards, perforated,
5.08
PC (UL 94 V-0)
light grey



B6804113
Terminal guards, with holes, 5.08
PC (UL 94 V-0)
light grey



B6804114
Terminal guards, with holes, 7.5
& 7.62
PC (UL 94 V-0)
light grey



B6804115
Terminal guards, with holes,
10.16
PC (UL 94 V-0)
light grey

附件



B6800100
Front panel, 1 module
PC (UL 94 V-0)
light grey
14x42mm



B6800200
Front panel, 1 module
PC
transparent
14x42mm



B6801100
Front panel, 2 modules
PC (UL 94 V-0)
light grey
32x42mm



B6801200
Front panel, 2 modules
PC
transparent
32x42mm

RAILTEC C 型导轨盒 C



B6802100
Front panel, 3 modules
PC (UL 94 V-0)
light grey
49x42mm



B6802200
Front panel, 3 modules
PC
transparent
49x42mm



B6803100
Front panel, 4 modules
PC (UL 94 V-0)
light grey
67x42mm



B6803200
Front panel, 4 modules
PC
transparent
67x42mm



B6804100
Front panel, 5 modules
PC (UL 94 V-0)
light grey
84x42mm



B6804200
Front panel, 5 modules
PC
transparent
84x42mm



B6805100
Front panel, 6 modules
PC (UL 94 V-0)
light grey
102x42mm



B6805200
Front panel, 6 modules
PC
transparent
102x42mm



B6806100
Front panel, 9 modules
PC (UL 94 V-0)
light grey
155x42mm



B6806200
Front panel, 9 modules
PC
transparent
155x42mm



B6807100
Front panel, 12 modules
PC (UL 94 V-0)
light grey
207.5x42mm

保留技术更改可能性。© OKW 机盒系统, Buchen/德国。