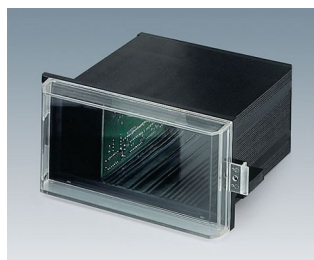
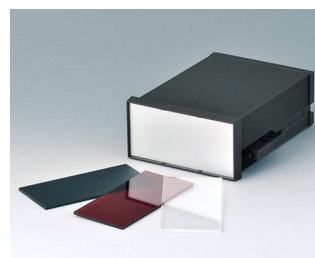


DIN 标准安装盒 A 型

装于控制面板的 DIN-标准安装盒

通过所有机盒部件的简单的无螺纹安装，体现了根据 DIN IEC 61554 标准型 A 机盒与用于控制面板安装的传统机盒的区别。

- 7 个标准尺寸 72 x 36, 48 x 48, 96 x 48, 72 x 72, 96 x 96*, 144 x 72* 和 144 x 144，机盒深度可选 (*不完全符合 DIN IEC 61554 标准)
- 材料类似 UL 94 V-0：自熄性和抗冲击性; 也具有很高的机械及电气性能
- 通过背面安装框固定电路板
- 前后面板提供广泛的选择性，卡夹式锁定
- 将机盒安装于控制面板的紧固元件已包含在供货范围内
- 通过有利的设计原理，达到与应用完全匹配的灵活的机盒深度的选择
- 具备保护显示和操作元件的透明罩 (规格 96 x 48 - 144 x 144)
- 2 或 4 侧面设置了导槽，用于电路板安装等
- 防护等级 < IP 40



按客户要求修改加工

DIN 标准安装盒 A 型

如何体现您的特殊产品？如有需要，我们执行所有必要的修改和精加工，提供组装完毕的机盒。
产品类型用于 DIN 标准安装盒 A 型



机械加工



表面涂渡



图文打印于机盒



激光打印字体



制备 / 组装

类型



B6012011
DIN-MODULAR CASE TYPE A
PPO (UL 94 V-0)
black RAL 9005
48x48x57mm



B6012021
DIN-MODULAR CASE TYPE A
PPO (UL 94 V-0)
black RAL 9005
48x48x75mm



B6012031
DIN-MODULAR CASE TYPE A
PPO (UL 94 V-0)
black RAL 9005
48x48x100mm



B6012051
DIN-MODULAR CASE TYPE A
PPO (UL 94 V-0)
black RAL 9005
48x48x114mm



B6012061
DIN-MODULAR CASE TYPE A
PPO (UL 94 V-0)
black RAL 9005
48x48x124mm



B6021011
DIN-MODULAR CASE TYPE A
PPO (UL 94 V-0)
black RAL 9005
72x36x57mm



B6021021
DIN-MODULAR CASE TYPE A
PPO (UL 94 V-0)
black RAL 9005
72x36x75mm



B6021031
DIN-MODULAR CASE TYPE A
PPO (UL 94 V-0)
black RAL 9005
72x36x100mm



B6023011
DIN-MODULAR CASE TYPE A
PPO (UL 94 V-0)
black RAL 9005
72x72x57mm



B6023021
DIN-MODULAR CASE TYPE A
PPO (UL 94 V-0)
black RAL 9005
72x72x75mm

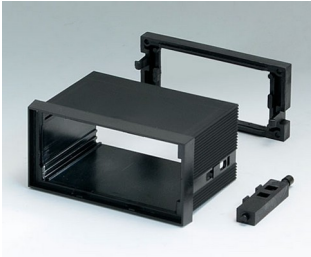


B6023031
DIN-MODULAR CASE TYPE A
PPO (UL 94 V-0)
black RAL 9005
72x72x100mm



B6023061
DIN-MODULAR CASE TYPE A
PPO (UL 94 V-0)
black RAL 9005
72x72x124mm

DIN 标准安装盒 A 型



B6032011
DIN-MODULAR CASE TYPE A,
Vers. I
PPO (UL 94 V-0)
black RAL 9005
96x48x57mm



B6032021
DIN-MODULAR CASE TYPE A,
Vers. I
PPO (UL 94 V-0)
black RAL 9005
96x48x75mm



B6032031
DIN-MODULAR CASE TYPE A,
Vers. I
PPO (UL 94 V-0)
black RAL 9005
96x48x100mm



B6032041
DIN-MODULAR CASE TYPE A,
Vers. I
PPO (UL 94 V-0)
black RAL 9005
96x48x109mm



B6032051
DIN-MODULAR CASE TYPE A,
Vers. I
PPO (UL 94 V-0)
black RAL 9005
96x48x114mm



B6032061
DIN-MODULAR CASE TYPE A,
Vers. I
PPO (UL 94 V-0)
black RAL 9005
96x48x124mm



B6032072
DIN-MODULAR CASE TYPE A,
Vers. II
PPO (UL 94 V-0)
black RAL 9005
96x48x131mm



B6034011
DIN-MODULAR CASE TYPE A,
Vers. I
PPO (UL 94 V-0)
black RAL 9005
96x96x57mm



B6034021
DIN-MODULAR CASE TYPE A,
Vers. I
PPO (UL 94 V-0)
black RAL 9005
96x96x75mm



B6034031
DIN-MODULAR CASE TYPE A,
Vers. I
PPO (UL 94 V-0)
black RAL 9005
96x96x100mm



B6034062
DIN-MODULAR CASE TYPE A,
Vers. II
PPO (UL 94 V-0)
black RAL 9005
96x96x124mm



B6034102
DIN-MODULAR CASE TYPE A,
Vers. II
PPO (UL 94 V-0)
black RAL 9005
96x96x179mm



B6043011
DIN-MODULAR CASE TYPE A
PPO (UL 94 V-0)
black RAL 9005
144x72x57mm



B6043021
DIN-MODULAR CASE TYPE A
PPO (UL 94 V-0)
black RAL 9005
144x72x75mm



B6043031
DIN-MODULAR CASE TYPE A
PPO (UL 94 V-0)
black RAL 9005
144x72x100mm



B6043041
DIN-MODULAR CASE TYPE A
PPO (UL 94 V-0)
black RAL 9005
144x72x109mm

DIN 标准安装盒 A 型



B6043061
DIN-MODULAR CASE TYPE A
PPO (UL 94 V-0)
black RAL 9005
144x72x124mm



B6043071
DIN-MODULAR CASE TYPE A
PPO (UL 94 V-0)
black RAL 9005
144x72x131mm



B6043091
DIN-MODULAR CASE TYPE A
PPO (UL 94 V-0)
black RAL 9005
144x72x156mm



B6045011
DIN-MODULAR CASE TYPE A
PPO (UL 94 V-0)
black RAL 9005
144x144x57mm



B6045021
DIN-MODULAR CASE TYPE A
PPO (UL 94 V-0)
black RAL 9005
144x144x75mm



B6045031
DIN-MODULAR CASE TYPE A
PPO (UL 94 V-0)
black RAL 9005
144x144x100mm

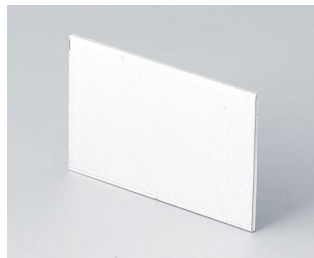


B6045051
DIN-MODULAR CASE TYPE A
PPO (UL 94 V-0)
black RAL 9005
144x144x114mm

需加附件使产品完整



B6112111
Front panel
Aluminium
matt anodised
43.6x43.6x1.5mm



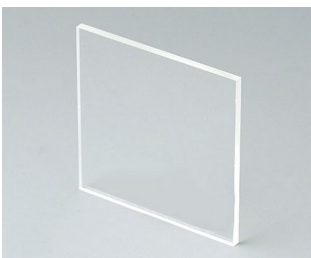
B6112112
Rear panel
Aluminium
matt anodised
42.2x29.6x1mm



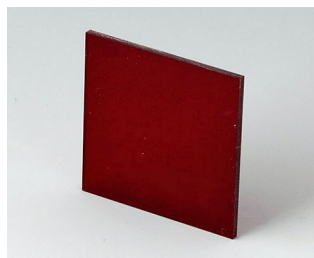
B6112221
Front panel
PPO (UL 94 V-0)
black RAL 9005
43.7x43.7x2mm



B6112222
Rear panel
PPO (UL 94 V-0)
black RAL 9005
42.3x29.6x1.8mm



B6112331
Front panel
Acrylglas
transparent
43.6x43.6x2mm



B6112341
Front panel
Acrylglas
red transparent
43.6x43.6x2mm



B6121111
Front panel
Aluminium
matt anodised
67.7x31.6x1.5mm



B6121112
Rear panel
Aluminium
matt anodised
57.6x28.6x1mm

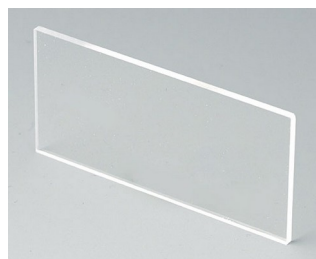
DIN 标准安装盒 A 型



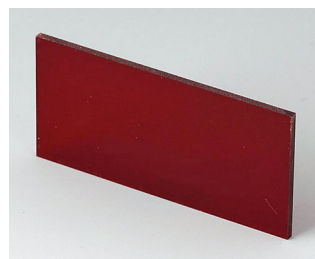
B6121221
Front panel
PPO (UL 94 V-0)
black RAL 9005
67.8x31.7x2mm



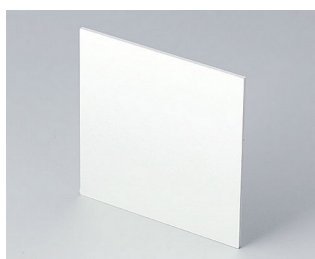
B6121222
Rear panel
PPO (UL 94 V-0)
black RAL 9005
57.6x28.7x1.5mm



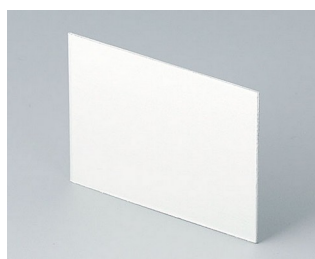
B6121331
Front panel
Acrylglas
transparent
67.7x31.6x2mm



B6121341
Front panel
Acrylglas
red transparent
67.7x31.6x2mm



B6123111
Front panel
Aluminium
matt anodised
67.5x67.5x1.5mm



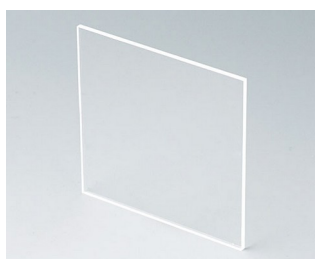
B6123112
Rear panel
Aluminium
matt anodised
63.7x49.1x1mm



B6123221
Front panel
PPO (UL 94 V-0)
black RAL 9005
67.6x67.6x2mm



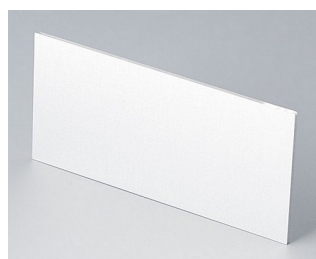
B6123222
Rear panel
PPO (UL 94 V-0)
black RAL 9005
63.8x49.2x1.7mm



B6123331
Front panel
Acrylglas
transparent
67.5x67.5x2mm



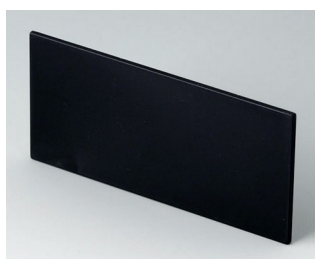
B6123341
Front panel
Acrylglas
red transparent
67.5x67.5x2mm



B6132111
Front panel
Aluminium
matt anodised
91.5x43.4x1.5mm



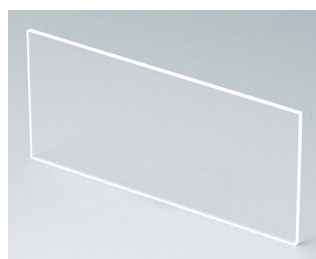
B6132112
Rear panel
Aluminium
matt anodised
73.5x39.6x1mm



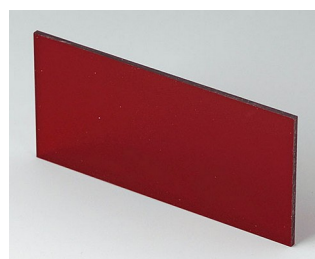
B6132221
Front panel
PPO (UL 94 V-0)
black RAL 9005
91.6x43.5x2mm



B6132222
Rear panel
PPO (UL 94 V-0)
black RAL 9005
73.6x39.75x1.7mm

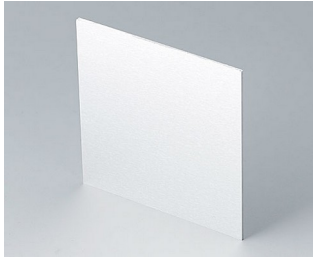


B6132331
Front panel
Acrylglas
transparent
91.5x43.4x2mm

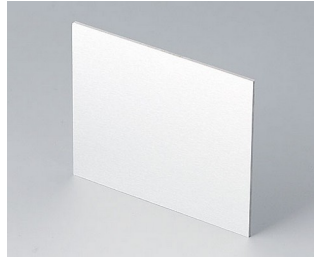


B6132341
Front panel
Acrylglas
red transparent
91.5x43.4x2mm

DIN 标准安装盒 A 型



B6134111
Front panel
Aluminium
matt anodised
90.6x90.6x1.5mm



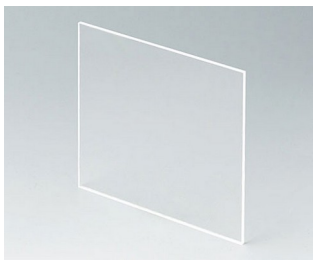
B6134112
Rear panel
Aluminium
matt anodised
86.7x71.7x1.5mm



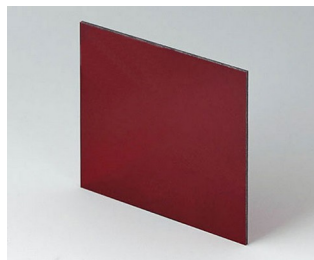
B6134221
Front panel
PPO (UL 94 V-0)
black RAL 9005
90.7x90.7x2mm



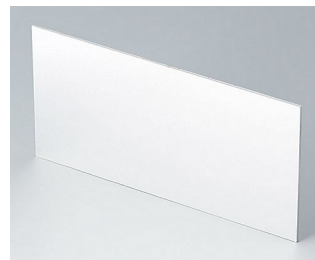
B6134222
Rear panel
PPO (UL 94 V-0)
black RAL 9005
86.8x71.8x1.7mm



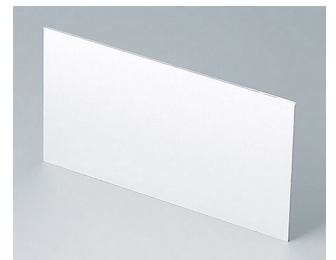
B6134331
Front panel
Acrylglas
transparent
90.6x90.6x2.2mm



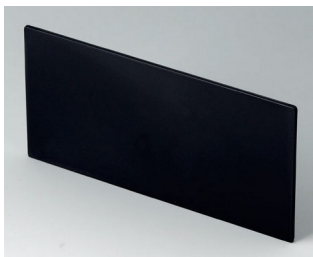
B6134341
Front panel
Acrylglas
red transparent
90.6x90.6x2mm



B6143111
Front panel
Aluminium
matt anodised
139.2x67.3x1.5mm



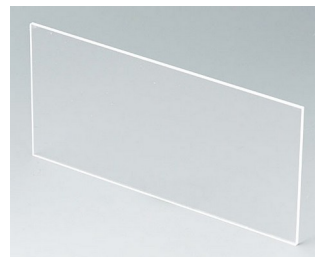
B6143112
Rear panel
Aluminium
matt anodised
118.9x62.6x1.5mm



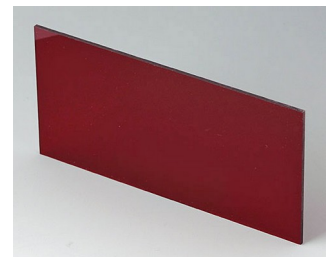
B6143221
Front panel
PPO (UL 94 V-0)
black RAL 9005
139.3x67.5x2mm



B6143222
Rear panel
PPO (UL 94 V-0)
black RAL 9005
119.1x62.7x2mm



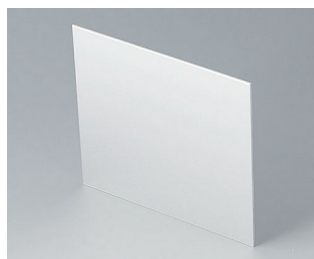
B6143331
Front panel
Acrylglas
transparent
139.2x67.3x2mm



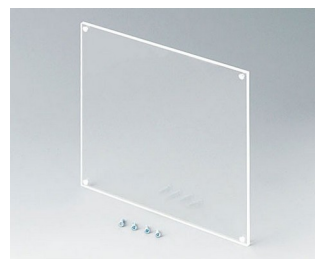
B6143341
Front panel
Acrylglas
red transparent
139.2x67.3x2mm



B6145111
Front panel
Aluminium
matt anodised
138x138x1.5mm



B6145112
Rear panel
Aluminium
matt anodised
131.3x118.6x1.5mm



B6145331
Rear panel
Acrylglas
transparent
138x138x3mm



B6145341
Front panel
Acrylglas
red transparent
138x138x3mm

DIN 标准安装盒 A 型

“保护等级” 附件



B6123533
Protection cover
PC
transparent



B6132533
Protection cover
PC
transparent



B6134533
Protection cover
PC
transparent



B6143533
Protection cover
PC
transparent



B6145533
Protection cover
PC
transparent

保留技术更改可能性。© OKW 机盒系统, Buchen/德国。