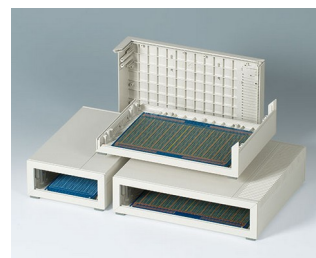
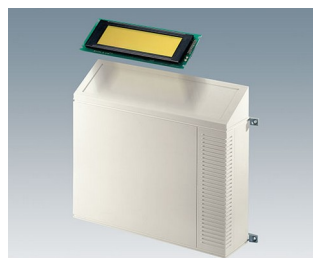
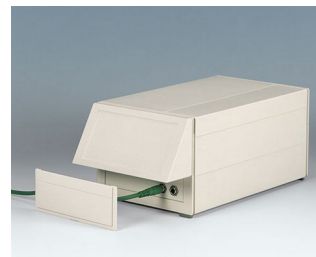
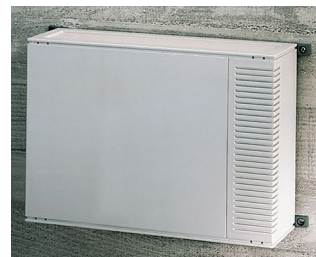


# MEDITEC 医疗器械盒

## 大型塑料机盒

令人信服的设计款式表现了 MEDITEC 医疗器械盒系列的特征，是为提供高精功能组件的豪华版的大型机盒系统的基础。

- 优雅并实用的设计款式
- 适合用于桌面、墙壁和移动式的多种应用
- 通过内设格栅状肋条达到高稳定性
- 简易装配的壳体设计
- 4 种规格，符合欧洲卡格式，单卡、双卡和特长型
- 2 个标准高度，如需要其它高度，可以使用连接器将两个中间壳体连接达到
- 符合人体工程学的倾斜操作面; 当使用中间壳体时，侧板条能最佳地封闭接口
- 塑料前/后板具有相同的表面质量，可进行灵活加工
- 无或带通风槽的侧板可推入; 与壳体相同颜色或海蓝色可选，如有需要也可选特殊颜色
- 机盒稳固脚包含在供货范围内
- 灵活挂墙支架带固定片
- 可带提手型; 利于路途的携带，如果需要，调节机构允许 30° 倾斜，使用户在现场有一个有利的设置角度
- 固定柱用于固定电路板和元器件



# MEDITEC 医疗器械盒

## 应用示例

实验室和医疗技术领域。保健领域。工艺工程控制。测量和控制技术。计算机外围设备。调制解调器和界面接口。通信和网络技术。数据收集。



amicOx pulse oximeter



Dry milling unit for foot care



NeurOne Tesla EEG System



Pneumatic Lithotripter System

## 按客户要求修改加工

如何体现您的特殊产品？如有需要，我们执行所有必要的修改和精加工，提供组装完毕的机盒。  
产品类型用于 Meditec 医疗器械盒



机械加工



表面涂渡



图文打印于机盒



激光打印字体



特殊材质



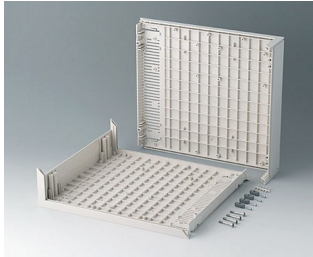
EMC 保护



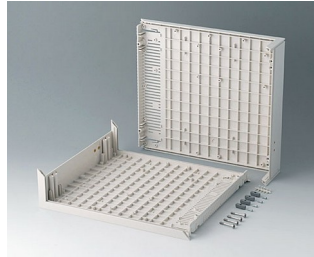
制备 / 组装

# MEDITEC 医疗器械盒

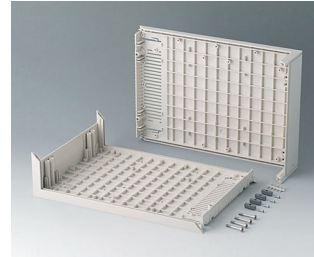
## 类型



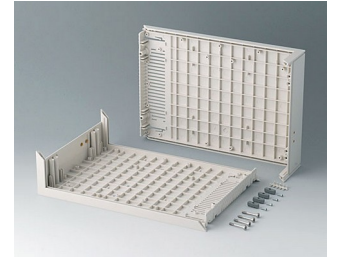
**B2010007**  
L-shells D 220, without holes  
ABS (UL 94 HB)  
off-white RAL 9002  
290x260x74mm



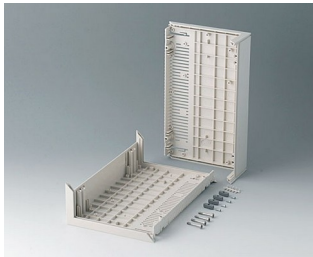
**B2010107**  
L-shells D 220, with holes for  
handle  
ABS (UL 94 HB)  
off-white RAL 9002  
290x260x74mm



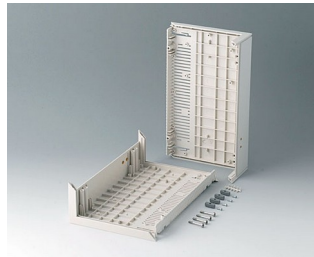
**B2011007**  
L-shells D 160, without holes  
ABS (UL 94 HB)  
off-white RAL 9002  
290x200x74mm



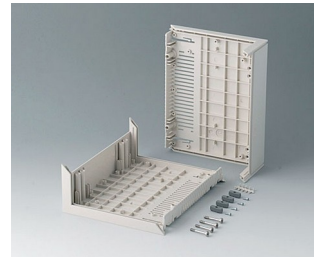
**B2011107**  
L-shells D 160, with holes for  
handle  
ABS (UL 94 HB)  
off-white RAL 9002  
290x200x74mm



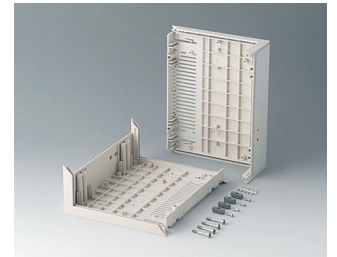
**B2012007**  
L-shells E 220, without holes  
ABS (UL 94 HB)  
off-white RAL 9002  
160x260x74mm



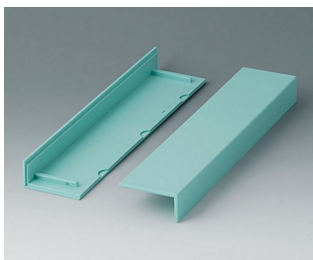
**B2012107**  
L-shells E 220, with holes for  
handle  
ABS (UL 94 HB)  
off-white RAL 9002  
160x260x74mm



**B2013007**  
L-shells E 160, without holes  
ABS (UL 94 HB)  
off-white RAL 9002  
160x200x74mm



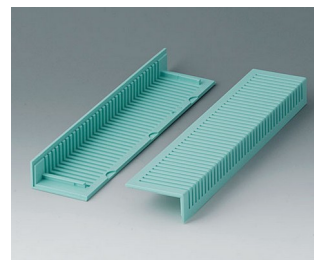
**B2013107**  
L-shells E 160, with holes for  
handle  
ABS (UL 94 HB)  
off-white RAL 9002  
160x200x74mm



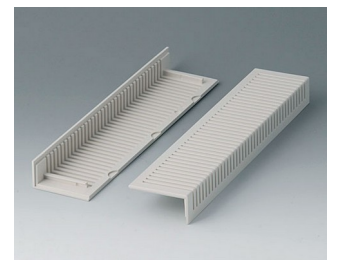
**B2020005**  
Side trims 220, without  
ventilation  
ABS  
lagoon



**B2020007**  
Side trims 220, without  
ventilation  
ABS (UL 94 HB)  
off-white RAL 9002

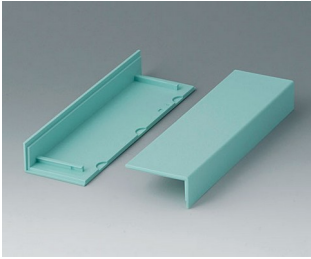


**B2021005**  
Side trims 220, with ventilation  
ABS  
lagoon

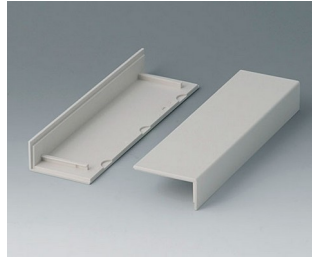


**B2021007**  
Side trims 220, with ventilation  
ABS (UL 94 HB)  
off-white RAL 9002

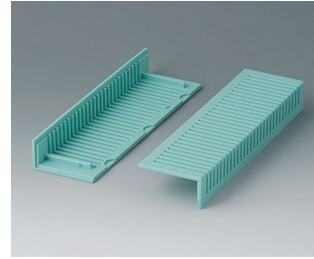
# MEDITEC 医疗器械盒



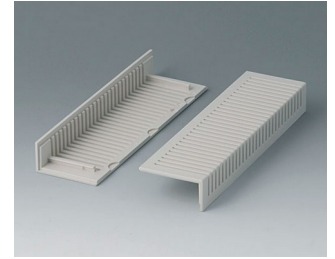
**B2022005**  
Side trims 160, without ventilation  
ABS  
lagoon



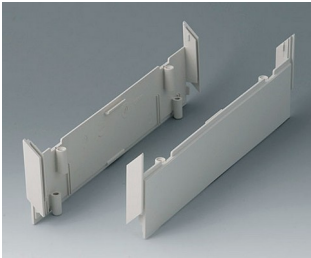
**B2022007**  
Side trims 160, without ventilation  
ABS (UL 94 HB)  
off-white RAL 9002



**B2023005**  
Side trims 160, with ventilation  
ABS  
lagoon



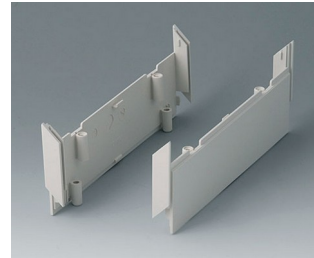
**B2023007**  
Side trims 160, with ventilation  
ABS (UL 94 HB)  
off-white RAL 9002



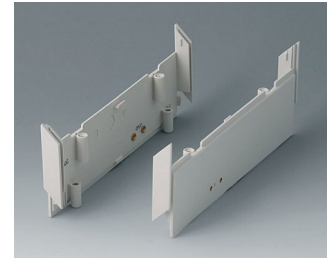
**B2030007**  
Side panels 220, without holes  
ABS (UL 94 HB)  
off-white RAL 9002



**B2030107**  
Side panels 220, with holes for handle  
ABS (UL 94 HB)  
off-white RAL 9002



**B2031007**  
Side panels 160, without holes  
ABS (UL 94 HB)  
off-white RAL 9002



**B2031107**  
Side panels 160, with holes for handle  
ABS (UL 94 HB)  
off-white RAL 9002



**B2116507**  
Handle bar E  
PA 6  
off-white RAL 9002



**B2129507**  
Handle bar D  
PA 6  
off-white RAL 9002



**B2210005**  
MEDITEC D 220, without handle bar  
ABS (UL 94 HB)  
off-white RAL 9002  
290x260x74mm  
IP 40



**B2210007**  
MEDITEC D 220, without handle bar  
ABS (UL 94 HB)  
off-white RAL 9002  
290x260x74mm  
IP 40



**B2210015**  
MEDITEC D 220, without handle bar  
ABS (UL 94 HB)  
off-white RAL 9002  
290x260x74mm  
IP 40



**B2210017**  
MEDITEC D 220, without handle bar  
ABS (UL 94 HB)  
off-white RAL 9002  
290x260x74mm  
IP 40



**B2210105**  
MEDITEC D 220, with handle bar  
ABS (UL 94 HB)  
off-white RAL 9002  
290x260x74mm  
IP 40



**B2210107**  
MEDITEC D 220, with handle bar  
ABS (UL 94 HB)  
off-white RAL 9002  
290x260x74mm  
IP 40

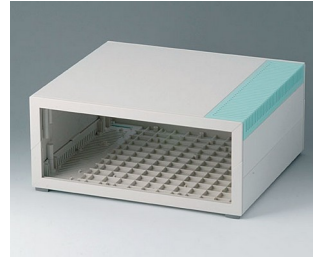
# MEDITEC 医疗器械盒



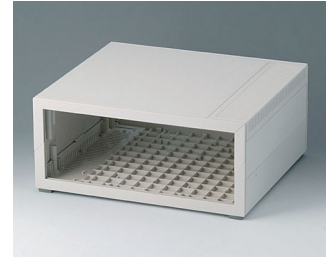
**B2210115**  
MEDITEC D 220, with handle bar  
ABS (UL 94 HB)  
off-white RAL 9002  
290x260x74mm  
IP 40



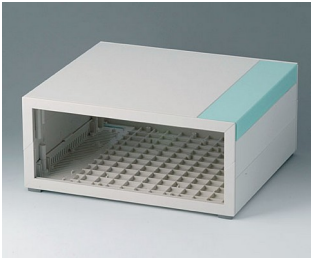
**B2210117**  
MEDITEC D 220, with handle bar  
ABS (UL 94 HB)  
off-white RAL 9002  
290x260x74mm  
IP 40



**B2210205**  
MEDITEC D 220, without handle bar  
ABS (UL 94 HB)  
off-white RAL 9002  
290x260x124mm  
IP 40



**B2210207**  
MEDITEC D 220, without handle bar  
ABS (UL 94 HB)  
off-white RAL 9002  
290x260x124mm  
IP 40



**B2210215**  
MEDITEC D 220, without handle bar  
ABS (UL 94 HB)  
off-white RAL 9002  
290x260x124mm  
IP 40



**B2210217**  
MEDITEC D 220, without handle bar  
ABS (UL 94 HB)  
off-white RAL 9002  
290x260x124mm  
IP 40



**B2210305**  
MEDITEC D 220, with handle bar  
ABS (UL 94 HB)  
off-white RAL 9002  
290x260x124mm  
IP 40



**B2210307**  
MEDITEC D 220, with handle bar  
ABS (UL 94 HB)  
off-white RAL 9002  
290x260x124mm  
IP 40



**B2210315**  
MEDITEC D 220, with handle bar  
ABS (UL 94 HB)  
off-white RAL 9002  
290x260x124mm  
IP 40



**B2210317**  
MEDITEC D 220, with handle bar  
ABS (UL 94 HB)  
off-white RAL 9002  
290x260x124mm  
IP 40



**B2211005**  
MEDITEC D 160, without handle bar  
ABS (UL 94 HB)  
off-white RAL 9002  
290x200x74mm  
IP 40



**B2211007**  
MEDITEC D 160, without handle bar  
ABS (UL 94 HB)  
off-white RAL 9002  
290x200x74mm  
IP 40



**B2211015**  
MEDITEC D 160, without handle bar  
ABS (UL 94 HB)  
off-white RAL 9002  
290x200x74mm  
IP 40



**B2211017**  
MEDITEC D 160, without handle bar  
ABS (UL 94 HB)  
off-white RAL 9002  
290x200x74mm  
IP 40



**B2211105**  
MEDITEC D 160, with handle bar  
ABS (UL 94 HB)  
off-white RAL 9002  
290x200x74mm  
IP 40



**B2211107**  
MEDITEC D 160, with handle bar  
ABS (UL 94 HB)  
off-white RAL 9002  
290x200x74mm  
IP 40

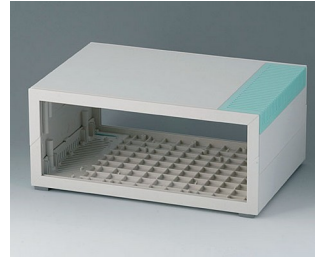
# MEDITEC 医疗器械盒



**B2211115**  
MEDITEC D 160, with handle bar  
ABS (UL 94 HB)  
off-white RAL 9002  
290x200x74mm  
IP 40



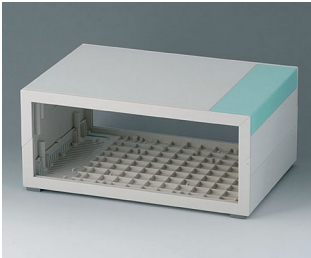
**B2211117**  
MEDITEC D 160, with handle bar  
ABS (UL 94 HB)  
off-white RAL 9002  
290x200x74mm  
IP 40



**B2211205**  
MEDITEC D 160, without handle bar  
ABS (UL 94 HB)  
off-white RAL 9002  
290x200x124mm  
IP 40



**B2211207**  
MEDITEC D 160, without handle bar  
ABS (UL 94 HB)  
off-white RAL 9002  
290x200x124mm  
IP 40



**B2211215**  
MEDITEC D 160, without handle bar  
ABS (UL 94 HB)  
off-white RAL 9002  
290x200x124mm  
IP 40



**B2211217**  
MEDITEC D 160, without handle bar  
ABS (UL 94 HB)  
off-white RAL 9002  
290x200x124mm  
IP 40



**B2211305**  
MEDITEC D 160, with handle bar  
ABS (UL 94 HB)  
off-white RAL 9002  
290x200x124mm  
IP 40



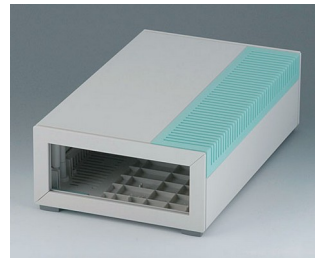
**B2211307**  
MEDITEC D 160, with handle bar  
ABS (UL 94 HB)  
off-white RAL 9002  
290x200x124mm  
IP 40



**B2211315**  
MEDITEC D 160, with handle bar  
ABS (UL 94 HB)  
off-white RAL 9002  
290x200x124mm  
IP 40



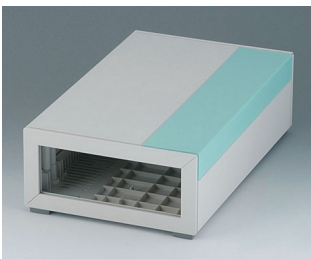
**B2211317**  
MEDITEC D 160, with handle bar  
ABS (UL 94 HB)  
off-white RAL 9002  
290x200x124mm  
IP 40



**B2212005**  
MEDITEC E 220, without handle bar  
ABS (UL 94 HB)  
off-white RAL 9002  
160x260x74mm  
IP 40



**B2212007**  
MEDITEC E 220, without handle bar  
ABS (UL 94 HB)  
off-white RAL 9002  
160x260x74mm  
IP 40



**B2212015**  
MEDITEC E 220, without handle bar  
ABS (UL 94 HB)  
off-white RAL 9002  
160x260x74mm  
IP 40



**B2212017**  
MEDITEC E 220, without handle bar  
ABS (UL 94 HB)  
off-white RAL 9002  
160x260x74mm  
IP 40



**B2212105**  
MEDITEC E 220, with handle bar  
ABS (UL 94 HB)  
off-white RAL 9002  
160x260x74mm  
IP 40



**B2212107**  
MEDITEC E 220, with handle bar  
ABS (UL 94 HB)  
off-white RAL 9002  
160x260x74mm  
IP 40

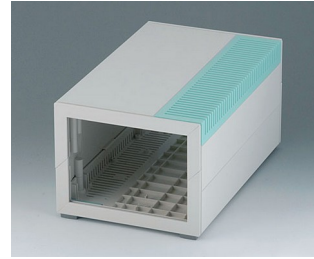
# MEDITEC 医疗器械盒



**B2212115**  
MEDITEC E 220, with handle bar  
ABS (UL 94 HB)  
off-white RAL 9002  
160x260x74mm  
IP 40



**B2212117**  
MEDITEC E 220, with handle bar  
ABS (UL 94 HB)  
off-white RAL 9002  
160x260x74mm  
IP 40



**B2212205**  
MEDITEC E 220, without handle bar  
ABS (UL 94 HB)  
off-white RAL 9002  
160x260x124mm  
IP 40



**B2212207**  
MEDITEC E 220, without handle bar  
ABS (UL 94 HB)  
off-white RAL 9002  
160x260x124mm  
IP 40



**B2212215**  
MEDITEC E 220, without handle bar  
ABS (UL 94 HB)  
off-white RAL 9002  
160x260x124mm  
IP 40



**B2212217**  
MEDITEC E 220, without handle bar  
ABS (UL 94 HB)  
off-white RAL 9002  
160x260x124mm  
IP 40



**B2212305**  
MEDITEC E 220, with handle bar  
ABS (UL 94 HB)  
off-white RAL 9002  
160x260x124mm  
IP 40



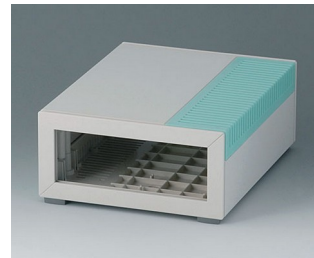
**B2212307**  
MEDITEC E 220, with handle bar  
ABS (UL 94 HB)  
off-white RAL 9002  
160x260x124mm  
IP 40



**B2212315**  
MEDITEC E 220, with handle bar  
ABS (UL 94 HB)  
off-white RAL 9002  
160x260x124mm  
IP 40



**B2212317**  
MEDITEC E 220, with handle bar  
ABS (UL 94 HB)  
off-white RAL 9002  
160x260x124mm  
IP 40



**B2213005**  
MEDITEC E 160, without handle bar  
ABS (UL 94 HB)  
off-white RAL 9002  
160x200x74mm  
IP 40



**B2213007**  
MEDITEC E 160, without handle bar  
ABS (UL 94 HB)  
off-white RAL 9002  
160x200x74mm  
IP 40



**B2213015**  
MEDITEC E 160, without handle bar  
ABS (UL 94 HB)  
off-white RAL 9002  
160x200x74mm  
IP 40



**B2213017**  
MEDITEC E 160, without handle bar  
ABS (UL 94 HB)  
off-white RAL 9002  
160x200x74mm  
IP 40



**B2213105**  
MEDITEC E 160, with handle bar  
ABS (UL 94 HB)  
off-white RAL 9002  
160x200x74mm  
IP 40



**B2213107**  
MEDITEC E 160, with handle bar  
ABS (UL 94 HB)  
off-white RAL 9002  
160x200x74mm  
IP 40

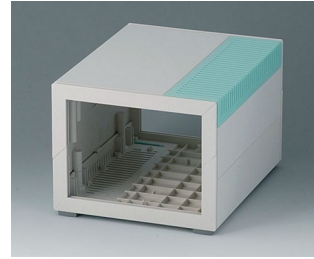
# MEDITEC 医疗器械盒



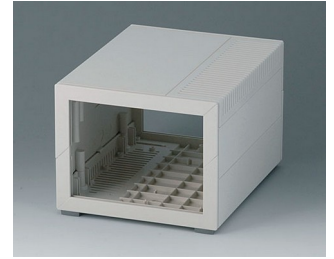
**B2213115**  
MEDITEC E 160, with handle  
bar  
ABS (UL 94 HB)  
off-white RAL 9002  
160x200x74mm  
IP 40



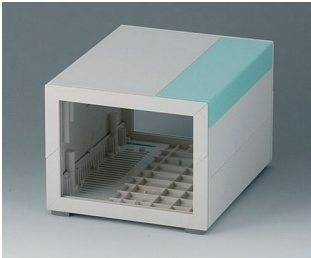
**B2213117**  
MEDITEC E 160, with handle  
bar  
ABS (UL 94 HB)  
off-white RAL 9002  
160x200x74mm  
IP 40



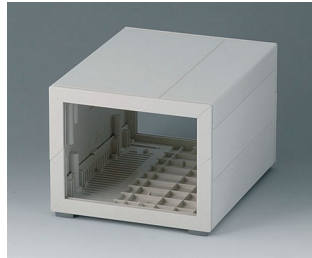
**B2213205**  
MEDITEC E 160, without handle  
bar  
ABS (UL 94 HB)  
off-white RAL 9002  
160x200x124mm  
IP 40



**B2213207**  
MEDITEC E 160, without handle  
bar  
ABS (UL 94 HB)  
off-white RAL 9002  
160x200x124mm  
IP 40



**B2213215**  
MEDITEC E 160, without handle  
bar  
ABS (UL 94 HB)  
off-white RAL 9002  
160x200x124mm  
IP 40



**B2213217**  
MEDITEC E 160, without handle  
bar  
ABS (UL 94 HB)  
off-white RAL 9002  
160x200x124mm  
IP 40



**B2213305**  
MEDITEC E 160, with handle  
bar  
ABS (UL 94 HB)  
off-white RAL 9002  
160x200x124mm  
IP 40



**B2213307**  
MEDITEC E 160, with handle  
bar  
ABS (UL 94 HB)  
off-white RAL 9002  
160x200x124mm  
IP 40



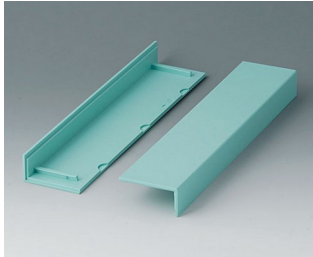
**B2213315**  
MEDITEC E 160, with handle  
bar  
ABS (UL 94 HB)  
off-white RAL 9002  
160x200x124mm  
IP 40



**B2213317**  
MEDITEC E 160, with handle  
bar  
ABS (UL 94 HB)  
off-white RAL 9002  
160x200x124mm  
IP 40

# MEDITEC 医疗器械盒

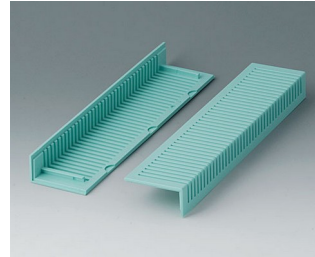
系统组件使产品完整



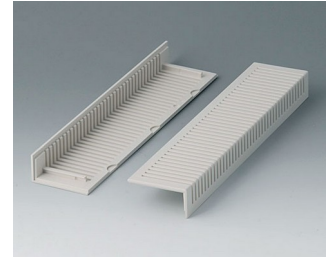
**B2020005**  
Side trims 220, without ventilation  
ABS  
lagoon



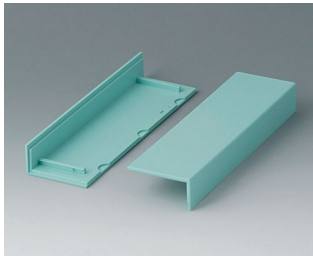
**B2020007**  
Side trims 220, without ventilation  
ABS (UL 94 HB)  
off-white RAL 9002



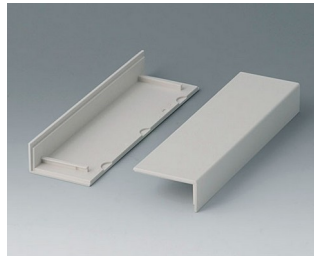
**B2021005**  
Side trims 220, with ventilation  
ABS  
lagoon



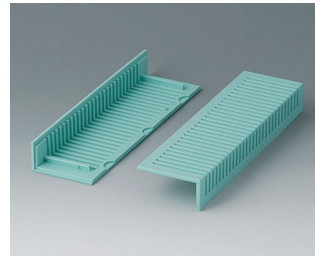
**B2021007**  
Side trims 220, with ventilation  
ABS (UL 94 HB)  
off-white RAL 9002



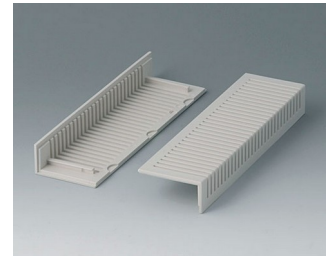
**B2022005**  
Side trims 160, without ventilation  
ABS  
lagoon



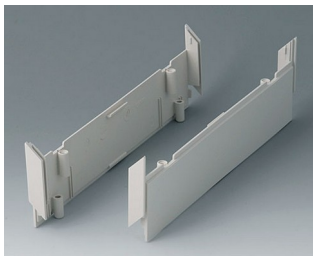
**B2022007**  
Side trims 160, without ventilation  
ABS (UL 94 HB)  
off-white RAL 9002



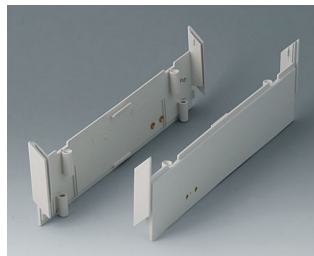
**B2023005**  
Side trims 160, with ventilation  
ABS  
lagoon



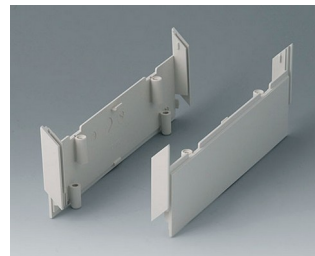
**B2023007**  
Side trims 160, with ventilation  
ABS (UL 94 HB)  
off-white RAL 9002



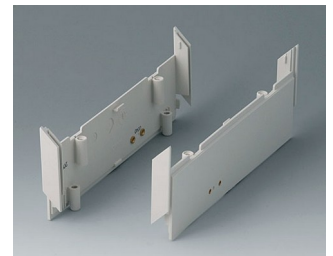
**B2030007**  
Side panels 220, without holes  
ABS (UL 94 HB)  
off-white RAL 9002



**B2030107**  
Side panels 220, with holes for handle  
ABS (UL 94 HB)  
off-white RAL 9002



**B2031007**  
Side panels 160, without holes  
ABS (UL 94 HB)  
off-white RAL 9002



**B2031107**  
Side panels 160, with holes for handle  
ABS (UL 94 HB)  
off-white RAL 9002



**B2116507**  
Handle bar E  
PA 6  
off-white RAL 9002



**B2129507**  
Handle bar D  
PA 6  
off-white RAL 9002



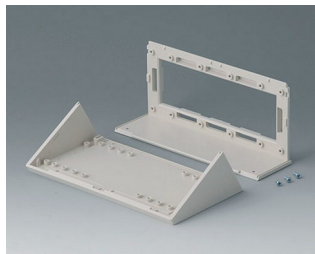
**B2133012**  
Wall mounting brackets  
PA 6  
volcano



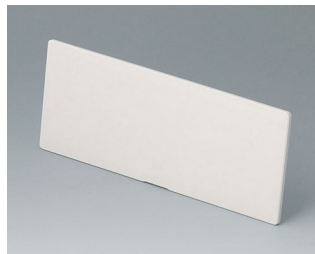
**B2135017**  
Connectors  
ABS (UL 94 HB)  
off-white RAL 9002

# MEDITEC 医疗器械盒

需加附件使产品完整



**B2116007**  
Sloping control panel E  
ABS (UL 94 HB)  
off-white RAL 9002



**B2116307**  
Front / rear panel E, flat  
ABS (UL 94 HB)  
off-white RAL 9002  
141.6x55.6x3mm



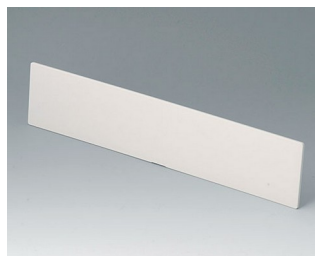
**B2116407**  
Front / rear panel Z1  
ABS (UL 94 HB)  
off-white RAL 9002  
141.6x105.6x3mm



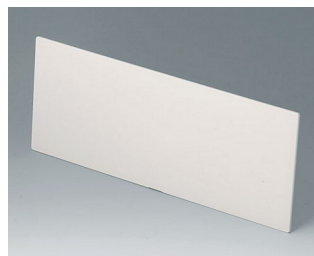
**B2116707**  
Infill panel E  
ABS (UL 94 HB)  
off-white RAL 9002  
142x55x5mm



**B2129007**  
Sloping control panel D  
ABS (UL 94 HB)  
off-white RAL 9002



**B2129307**  
Front / rear panel D, flat  
ABS (UL 94 HB)  
off-white RAL 9002  
271.6x55.6x3mm

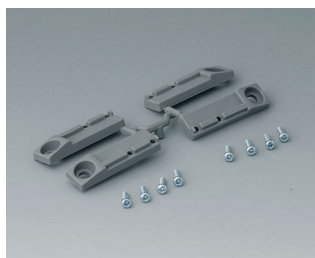


**B2129407**  
Front / rear panel Z1  
ABS (UL 94 HB)  
off-white RAL 9002  
271.6x105.6x3mm



**B2129707**  
Infill panel D  
ABS (UL 94 HB)  
off-white RAL 9002  
272x55x5mm

“挂墙支架” 配件



**B2133012**  
Wall mounting brackets  
PA 6  
volcano



**B2134012**  
Stacking elements  
PA 6  
volcano

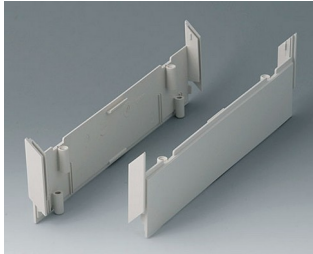
“螺钉” 附件



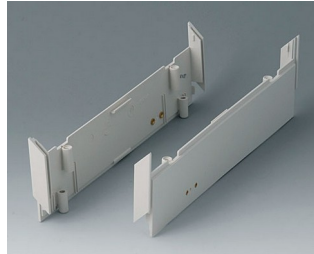
**A9199008**  
Set of screws

# MEDITEC 医疗器械盒

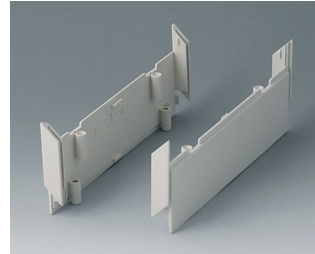
## 附件



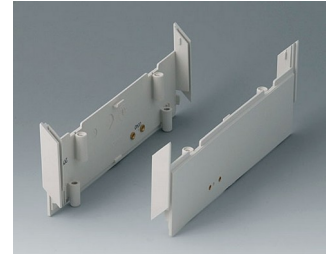
**B2030007**  
Side panels 220, without holes  
ABS (UL 94 HB)  
off-white RAL 9002



**B2030107**  
Side panels 220, with holes for  
handle  
ABS (UL 94 HB)  
off-white RAL 9002



**B2031007**  
Side panels 160, without holes  
ABS (UL 94 HB)  
off-white RAL 9002



**B2031107**  
Side panels 160, with holes for  
handle  
ABS (UL 94 HB)  
off-white RAL 9002



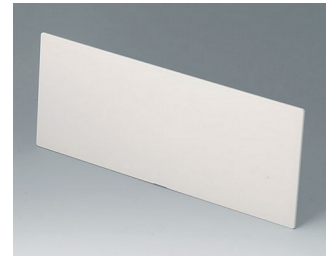
**B2116407**  
Front / rear panel Z1  
ABS (UL 94 HB)  
off-white RAL 9002  
141.6x105.6x3mm



**B2116507**  
Handle bar E  
PA 6  
off-white RAL 9002



**B2116707**  
Infill panel E  
ABS (UL 94 HB)  
off-white RAL 9002  
142x55x5mm



**B2129407**  
Front / rear panel Z1  
ABS (UL 94 HB)  
off-white RAL 9002  
271.6x105.6x3mm



**B2129507**  
Handle bar D  
PA 6  
off-white RAL 9002



**B2129707**  
Infill panel D  
ABS (UL 94 HB)  
off-white RAL 9002  
272x55x5mm



**B2134012**  
Stacking elements  
PA 6  
volcano



**B2135017**  
Connectors  
ABS (UL 94 HB)  
off-white RAL 9002

保留技术更改可能性。© OKW 机盒系统, Buchen/德国。