

# DATEC-TERMINAL 数据采集终端盒

## 用于运行数据采集的机盒

DATEC-TERMINAL 数据采集终端盒具备独特的设计，以满足现场操作数据采集（BDE）的要求。

- 具备符合人体工程学的 20° 倾斜操作面
- 适合用于桌面和墙壁应用
- 配备标准化插件和通读系统
- 4 种规格，2 种型号
- 规格 M 和 L 带另设的接线仓; 接线仓无障碍通入
- 简便的零配件安装; 安装部件位于视野之外
- 范围广泛的附件库，具备功能性和灵活性
- 防护等级达 IP 54，在使用罩子或盒盖关闭情况下
- 隐藏式挂墙安装带有拆卸保险装置
- 具备欧型和双欧型电路板的安装可能性 (S, SL, L)
- 具备适配独特功能和接口的平面
- 凹陷的操作区域以保护膜键盘



# DATEC-TERMINAL 数据采集终端盒

## 应用示例

工作场所和机器的数据采集系统。数控技术。门卫控制。对讲机和安保设备。医疗技术。保健领域。测量技术。控制技术。自动化控制。暖气和空调技术。



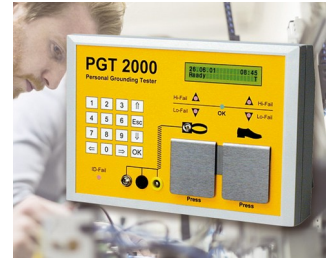
Dental Whitening and laser therapy



Device for monitoring and controlling distillation units



RFID access control readers



System for preventing electrostatic charges



Terminal for time recording, access control and order management



Versatile terminal for leisure facilities

## 按客户要求修改加工

如何体现您的特殊产品？如有需要，我们执行所有必要的修改和精加工，提供组装完毕的机盒。产品类型用于 Datec-Terminal 数据采集终端盒



机械加工



表面涂渡



图文打印于机盒



激光打印字体



装饰膜



特殊材质



EMC 保护



制备 / 组装

# DATEC-TERMINAL 数据采集终端盒

## 类型



**B4013117**  
DATEC-TERMINAL S  
ABS (UL 94 HB)  
off-white RAL 9002  
130x180x86mm  
IP 54 opt.



**B4013637**  
Cover S, convex  
ABS (UL 94 HB)  
off-white RAL 9002  
130x180x28mm



**B4016117**  
DATEC-TERMINAL M, Vers. I  
ABS (UL 94 HB)  
off-white RAL 9002  
168x272x101mm  
IP 54 opt.



**B4016217**  
DATEC-TERMINAL M, Vers. II  
ABS (UL 94 HB)  
off-white RAL 9002  
168x272x101mm  
IP 54 opt.



**B4016317**  
DATEC-TERMINAL M, Vers. III  
ABS (UL 94 HB)  
off-white RAL 9002  
168x272x101mm  
IP 54 opt.



**B4016631**  
Cover M, convex  
PC (UL 94 V-0)  
transparent  
168x220x29mm



**B4016637**  
Cover M, convex  
ABS (UL 94 HB)  
off-white RAL 9002  
168x220x29mm



**B4026117**  
DATEC-TERMINAL SL  
ABS (UL 94 HB)  
off-white RAL 9002  
264x180x86mm  
IP 54 opt.



**B4026637**  
Cover SL, convex  
ABS (UL 94 HB)  
off-white RAL 9002  
263x180x28mm



**B4030117**  
DATEC-TERMINAL L, Vers. I  
ABS (UL 94 HB)  
off-white RAL 9002  
302x272x101mm  
IP 54 opt.



**B4030217**  
DATEC-TERMINAL L, Vers. II  
ABS (UL 94 HB)  
off-white RAL 9002  
302x272x101mm  
IP 54 opt.



**B4030317**  
DATEC-TERMINAL L, Vers. III  
ABS (UL 94 HB)  
off-white RAL 9002  
302x272x101mm  
IP 54 opt.



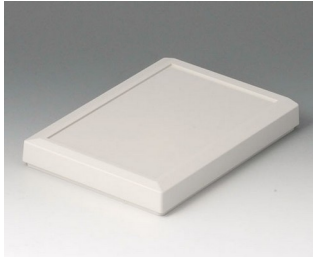
**B4030631**  
Cover L, convex  
PC (UL 94 V-0)  
transparent  
302x220x29mm



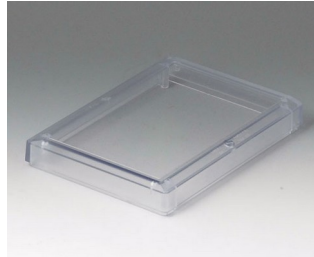
**B4030637**  
Cover L, convex  
ABS (UL 94 HB)  
off-white RAL 9002  
302x220x29mm

# DATEC-TERMINAL 数据采集终端盒

需加附件使产品完整



**B4013617**  
Cover S  
ABS (UL 94 HB)  
off-white RAL 9002  
130x180x23mm



**B4013621**  
Cover S  
PC (UL 94 V-0)  
transparent  
130x180x23mm



**B4013637**  
Cover S, convex  
ABS (UL 94 HB)  
off-white RAL 9002  
130x180x28mm



**B4016417**  
Lid M closed, flat  
ABS (UL 94 HB)  
off-white RAL 9002  
134x62x24mm



**B4016457**  
Lid M closed, high  
ABS (UL 94 HB)  
off-white RAL 9002  
134x67x38mm



**B4016617**  
Cover M, flat  
ABS (UL 94 HB)  
off-white RAL 9002  
168x220x29mm



**B4016621**  
Cover M, flat  
PC (UL 94 V-0)  
transparent  
168x220x29mm



**B4016631**  
Cover M, convex  
PC (UL 94 V-0)  
transparent  
168x220x29mm



**B4016637**  
Cover M, convex  
ABS (UL 94 HB)  
off-white RAL 9002  
168x220x29mm



**B4016657**  
Cover M, high  
ABS (UL 94 HB)  
off-white RAL 9002  
168x220x50mm



**B4016671**  
Cover strip M / L  
PC (UL 94 V-0)  
transparent



**B4016677**  
Cover strip M / L  
ABS (UL 94 HB)  
off-white RAL 9002



**B4026617**  
Cover SL  
ABS (UL 94 HB)  
off-white RAL 9002  
264x180x23mm



**B4026621**  
Cover SL  
PC (UL 94 V-0)  
transparent  
264x180x23mm



**B4026637**  
Cover SL, convex  
ABS (UL 94 HB)  
off-white RAL 9002  
263x180x28mm



**B4030417**  
Lid L closed, flat  
ABS (UL 94 HB)  
off-white RAL 9002  
268x62x24mm

# DATEC-TERMINAL 数据采集终端盒



**B4030617**  
Cover L, flat  
ABS (UL 94 HB)  
off-white RAL 9002  
302x220x29mm



**B4030621**  
Cover L, flat  
PC (UL 94 V-0)  
transparent  
302x220x29mm



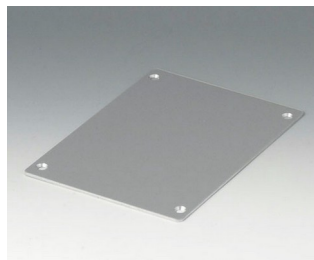
**B4030631**  
Cover L, convex  
PC (UL 94 V-0)  
transparent  
302x220x29mm



**B4030637**  
Cover L, convex  
ABS (UL 94 HB)  
off-white RAL 9002  
302x220x29mm



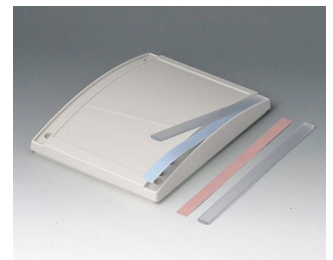
**B4030657**  
Cover L, high  
ABS (UL 94 HB)  
off-white RAL 9002  
302x220x50mm



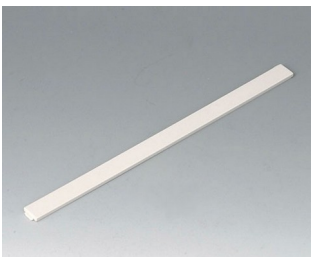
**B4113106**  
Front panel S  
Aluminium  
matt anodised  
125.9x176x2mm



**B4113126**  
Profile plate S  
Aluminium  
matt anodised  
130x180x8mm



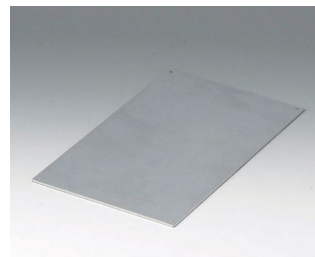
**B4113671**  
Cover strip S / SL  
PC (UL 94 V-0)  
transparent



**B4113677**  
Cover strip S / SL  
ABS (UL 94 HB)  
off-white RAL 9002



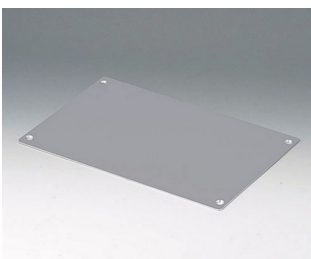
**B4116106**  
Front panel MS  
Aluminium  
matt anodised  
165.4x217.4x2mm



**B4116116**  
Front panel MH  
Aluminium  
matt anodised  
128x209x2mm



**B4116126**  
Profile plate M  
Aluminium  
matt anodised  
168x220x8mm



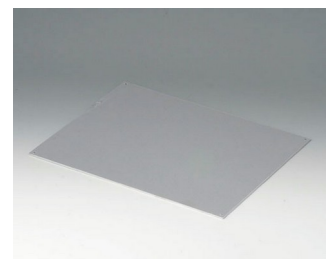
**B4126106**  
Front panel SL  
Aluminium  
matt anodised  
259.4x176x2mm



**B4126126**  
Profile plate SL  
Aluminium  
matt anodised  
263x180x8mm



**B4130106**  
Front panel LS  
Aluminium  
matt anodised  
299.4x217.4x2mm



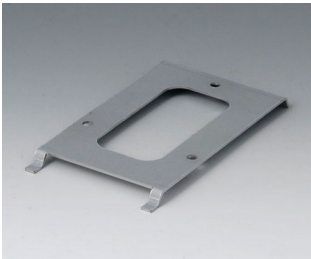
**B4130116**  
Front panel LH  
Aluminium  
matt anodised  
262x209x2mm

# DATEC-TERMINAL 数据采集终端盒

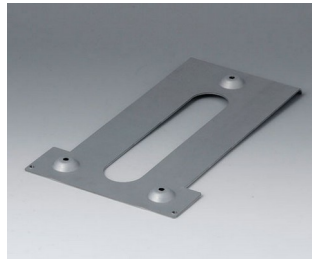


**B4130126**  
Profile plate L  
Aluminium  
matt anodised  
302x220x8mm

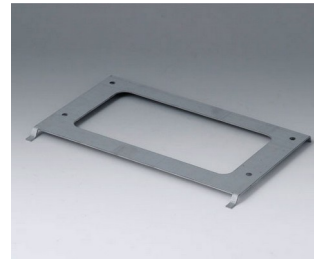
## “挂墙支架” 配件



**B4113147**  
Wall suspension element S  
Steel  
galvanized  
79x137x8mm



**B4116147**  
Wall suspension element M  
Steel  
galvanized  
214x126x12mm



**B4126147**  
Wall suspension element SL  
Steel  
galvanized  
210x137x8mm



**B4130147**  
Wall suspension element L  
Steel  
galvanized  
214x260x12mm

保留技术更改可能性。© OKW 机盒系统, Buchen/德国。