

CARRYTEC 手提盒

带功能把手的塑料机盒

CARRYTEC 手提盒为许多不同的应用范围和区域提供了唯一的一个在室内和室外应用的功能手柄。

- 防滑性通过重心的合理设置
- CARRYTEC M 扁平式手提盒用于封装平板电脑或类似物
- 背面设置安装于三脚架或悬臂; 达到视屏/操作面的快速定位和取向及规整的电缆引导
- 特大及可用于用户界面接口的表面 (S: 8,4"/21 cm; M: 10,4"/26 cm; L: 13,4"/34 cm)
- 为接口提供大的安装深度和足够的空间并显示超薄的外观
- 安装接口具备保护套
- 具备带保险的台式盒架和 / 或挂墙支架; 简单的数据和充电电流传输; 接触件作为附件 (扁平机盒除外)
- 固定夹用于安装在圆管和 DIN EN ISO 19054 标准导轨
- 耐冲击塑料材质适应严酷的使用
- 带密封件达到保护等级 IP 54 (配件)
- 操作区域凹陷, 以保护膜键盘
- 机盒易于清洁
- 适配 5 个 AA 电池的电池仓可选 (需要加工)
- 存放仪器、传感器、配件等物品的保护袋 (规格 S 和 M)
- 固定柱用于安装电路板和安装组件

CARRYTEC 手提盒



CARRYTEC 手提盒

应用示例

独特的多种应用功能: 手提 - 台式 - 墙挂 - 型轨安装 - 管安装 - 三脚架 - 悬臂。根据应用 (室内或室外)，创新的机盒可提供各种材质，如耐冲击的塑料、协调的颜色选择和多种组合可能。



Air velocity meter



Battery filler for aviation batteries



Camera inspection



CNC Machine Monitoring



Diagnostic camera for illustrating the machine status



Hand held HD-camera and monitor system



Indoor Farming Monitoring



Mobile radio remote control unit for orbital welding system



Mobile testing device for cost-effective fault analysis



Monitoring system for cleaning nozzles



Multi-functional measuring instrument



Patient Simulation System



Portable receiver

按客户要求修改加工

如何体现您的特殊产品？如有需要，我们执行所有必要的修改和精加工，提供组装完毕的机盒。产品类型用于 Carrytec 手提盒

CARRYTEC 手提盒



机械加工



表面涂渡



图文打印于机盒



激光打印字体



装饰膜



EMC 保护



制备 / 组装

类型



B4208107
CARRYTEC S
ABS (UL 94 HB)
off-white RAL 9002
222x205x80mm
IP 54 opt.



B4208208
CARRYTEC S
ASA+PC (UL 94 V-0)
lava
222x205x80mm
IP 54 opt.



B4210107
CARRYTEC M
ABS (UL 94 HB)
off-white RAL 9002
270x247x91mm
IP 54 opt.



B4210127
CARRYTEC M slim version
ABS (UL 94 HB)
off-white RAL 9002
270x247x42mm
IP 54 opt.



B4210208
CARRYTEC M
ASA+PC (UL 94 V-0)
lava
270x247x91mm
IP 54 opt.



B4210228
CARRYTEC M slim version
ASA+PC (UL 94 V-0)
lava
270x247x42mm
IP 54 opt.



B4213107
CARRYTEC L
ABS (UL 94 HB)
off-white RAL 9002
348x303x117mm
IP 54 opt.



B4213208
CARRYTEC L
ASA+PC (UL 94 V-0)
lava
348x303x117mm
IP 54 opt.

CARRYTEC 手提盒



B4308117
Station S/M
ABS (UL 94 HB)
off-white RAL 9002



B4308218
Station S/M
ASA+PC (UL 94 V-0)
lava



B4308600
Carrying case S, right-hand side
grey
82x180x65mm



B4308610
Carrying case S, left-hand side
grey
82x180x65mm



B4310600
Carrying case M, right-hand side
grey
99x214x64mm



B4310610
Carrying case M, left-hand side
grey
99x214x64mm



B4313117
Station L
ABS (UL 94 HB)
off-white RAL 9002



B4313218
Station L
ASA+PC (UL 94 V-0)
lava

“电池” 配件



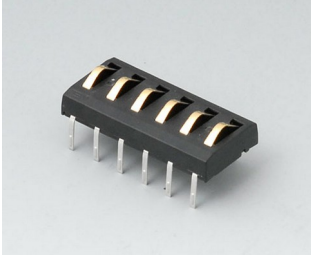
A9338117
Battery compartment kit, 5 x AA
ABS (UL 94 HB)
off-white RAL 9002
93x98mm
IP 54



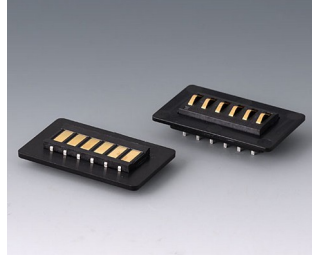
A9338218
Battery compartment kit, 5 x AA
ASA+PC (UL 94 V-0)
lava
93x98mm
IP 54

CARRYTEC 手提盒

“底座” 配件



A9178007
Contacts, male
gold-plated



A9193044
Contacting kit, 6-pin
ABS (UL 94 HB)
black RAL 9005



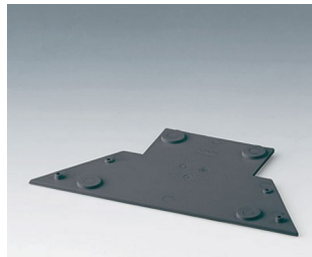
B4308117
Station S/M
ABS (UL 94 HB)
off-white RAL 9002



B4308127
Base plate for station
ABS (UL 94 HB)
off-white RAL 9002



B4308218
Station S/M
ASA+PC (UL 94 V-0)
lava



B4308228
Base plate for station
ASA+PC (UL 94 V-0)
lava



B4313117
Station L
ABS (UL 94 HB)
off-white RAL 9002



B4313147
Adapter for Station L
ABS (UL 94 HB)
off-white RAL 9002

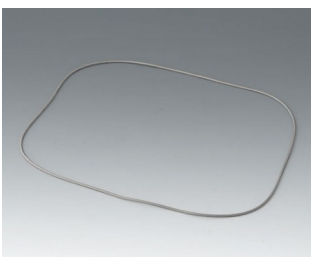


B4313218
Station L
ASA+PC (UL 94 V-0)
lava

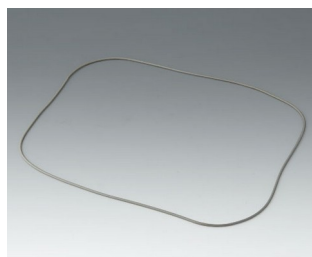


B4313248
Adapter for Station L
ASA+PC (UL 94 V-0)
lava

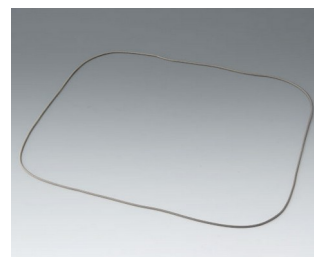
“保护等级” 附件



B4308001
Sealing S



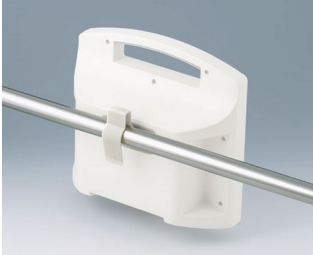
B4310001
Sealing M



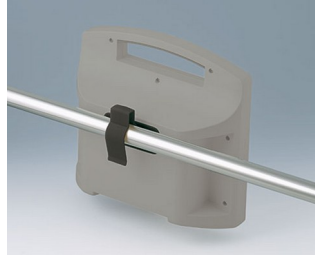
B4313001
Sealing L

CARRYTEC 手提盒

“挂墙支架” 配件



B4308237
Holding clamps
PA 6
off-white RAL 9002



B4308238
Holding clamps
PA 6
lava

“手提” 盒附件



B4308600
Carrying case S, right-hand side
grey
82x180x65mm



B4308610
Carrying case S, left-hand side
grey
82x180x65mm



B4308650
Shoulder strap
grey
1400mm



B4310600
Carrying case M, right-hand side
grey
99x214x64mm



B4310610
Carrying case M, left-hand side
grey
99x214x64mm

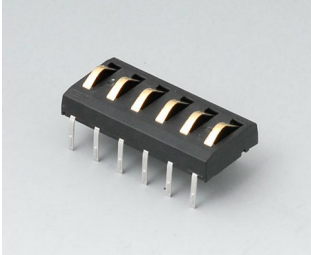
“螺钉” 附件



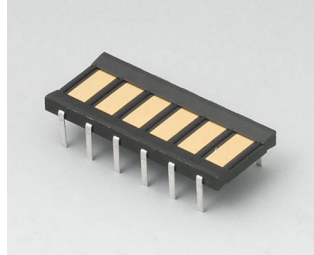
A0325080
Self-tapping screws 2.5 x 8 mm
(PZ1)

CARRYTEC 手提盒

附件



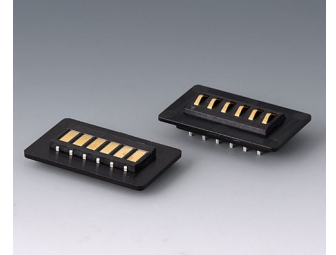
A9178007
Contacts, male
gold-plated



A9178008
Contacts, female
gold-plated



A9193042
Mounting plates for contacts
ABS (UL 94 HB)
black RAL 9005



A9193044
Contacting kit, 6-pin
ABS (UL 94 HB)
black RAL 9005

保留技术更改可能性。© OKW 机盒系统, Buchen/德国。