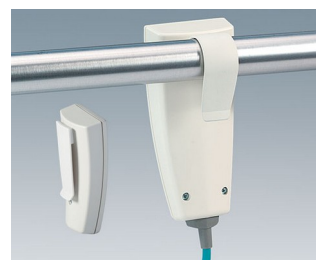
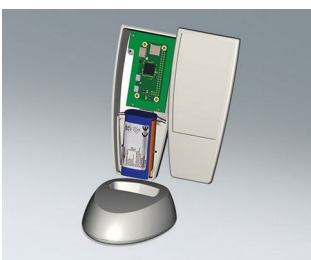
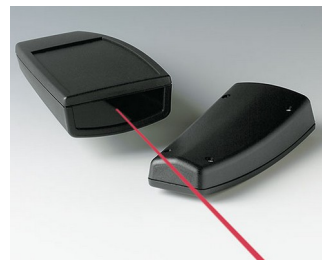


# SMART-CASE

## Caixas Portáteis com Curvas – excelente para condicionar

A proposta de dar mais expressão aos requisitos ergonômicos foi o ponto de partida para o desenvolvimento das caixas SMART-CASE.

- design ergonômico para conforto máximo do usuário
- ideal para dispositivos de controle remoto conectados via cabo ou alimentados por baterias: AAA, AA, 9 V ou células redondas 12 V
- versões com prensa-cabos pré-montados (tamanhos M, L e XL)
- área de operação recessada para proteção do teclado de membrana ou etiqueta
- ABS (UL 94 HB); SMART-CASES também disponíveis em luz permeável infravermelha plexiglas PMMA
- classe de proteção até IP 65: tamanhos L e XL com kit de vedação opcional e sem compartimento de bateria
- clipe adequado e apoio seguro para utilização de acessórios
- tamanhos M, L & XL para aplicações de mesa de trabalho
- pilares de fixação internos e suportes de fixação para PCB e componentes
- 4 tamanhos de gabinete



# SMART-CASE

## Exemplos de aplicação

Muitos tipos diferentes de sistemas de controle remoto. Soluções USB móveis. Feito especialmente para as áreas médicas e bem estar, bem como residencial e indústria.



BIOFIT test unit for eye frequency



Chlorophyll fluorimeter for plant screening



Controlling treatment beds



Infrared hand transmitter for sunscreening curtains



Laser distance measuring device



Leak locator



Nurse presence and staff alert



Remote trainer for dog training



Sleep screening system



System for digital respiratory sound analysis



System for leak detection in leisure vehicles

## Modificações específicas do cliente

O que você ainda precisa em seu próprio produto pessoal? Nós podemos fornecer caixas e knobs de ajuste com todas as modificações necessárias para a montagem de seus componentes eletrônicos. Opções para customizadas Smart-Case

# SMART-CASE



Usinagem



Pintura



Impressão



Letragem a laser



Películas decorativas



Materiais especiais



Blindagem EMC



Instalação / Montagem  
de acessórios

## Versões



**A9064107**  
SMART-CASE XS  
ABS (UL 94 HB)  
off-white RAL 9002  
58x35,6x19mm  
IP 40



**A9064109**  
SMART-CASE XS  
ABS (UL 94 HB)  
black RAL 9005  
58x35,6x19mm  
IP 40



**A9064209**  
SMART-CASE XS  
PMMA (IR) (UL 94 HB)  
black RAL 9005  
58x35,6x19mm  
IP 40



**A9066107**  
SMART-CASE M, Vers. I  
ABS (UL 94 HB)  
off-white RAL 9002  
96x47x24mm  
IP 40



**A9066109**  
SMART-CASE M, Vers. I  
ABS (UL 94 HB)  
black RAL 9005  
96x47x24mm  
IP 40



**A9066117**  
SMART-CASE M, Vers. II  
ABS (UL 94 HB)  
off-white RAL 9002  
96x47x24mm  
IP 40



**A9066119**  
SMART-CASE M, Vers. II  
ABS (UL 94 HB)  
black RAL 9005  
96x47x24mm  
IP 40



**A9066127**  
SMART-CASE M, Vers. III  
ABS (UL 94 HB)  
off-white RAL 9002  
96x47x24mm  
IP 40

# SMART-CASE



**A9066129**  
SMART-CASE M, Vers. III  
ABS (UL 94 HB)  
black RAL 9005  
96x47x24mm  
IP 40



**A9066137**  
SMART-CASE M, Vers. IV  
ABS (UL 94 HB)  
off-white RAL 9002  
96x47x24mm  
IP 40



**A9066139**  
SMART-CASE M, Vers. IV  
ABS (UL 94 HB)  
black RAL 9005  
96x47x24mm  
IP 40



**A9066147**  
SMART-CASE M, Vers. V  
ABS (UL 94 HB)  
off-white RAL 9002  
96x47x24mm  
IP 40



**A9066149**  
SMART-CASE M, Vers. V  
ABS (UL 94 HB)  
black RAL 9005  
96x47x24mm  
IP 40



**A9066209**  
SMART CASE M, Vers. I  
PMMA (IR) (UL 94 HB)  
black RAL 9005  
96x47x24mm  
IP 40



**A9066219**  
SMART-CASE M, Vers. II  
PMMA (IR) (UL 94 HB)  
black RAL 9005  
96x47x24mm  
IP 40



**A9066317**  
SMART-CASE M, Vers. VI  
ABS (UL 94 HB)  
off-white RAL 9002  
96x47x24mm  
IP 40



**A9066319**  
SMART-CASE M, Vers. VI  
ABS (UL 94 HB)  
black RAL 9005  
96x47x24mm  
IP 40



**A9066329**  
SMART-CASE M, Vers. III  
ABS (UL 94 HB)  
black RAL 9005  
96x47x24mm  
IP 40



**A9066339**  
SMART-CASE M, Vers. IV  
ABS (UL 94 HB)  
black RAL 9005  
96x47x24mm  
IP 40



**A9066349**  
SMART-CASE M, Vers. V  
ABS (UL 94 HB)  
black RAL 9005  
96x47x24mm  
IP 40



**A9066419**  
SMART-CASE M, Vers. VI  
PMMA (IR) (UL 94 HB)  
black RAL 9005  
96x47x24mm  
IP 40



**A9067107**  
SMART-CASE L, Vers. I  
ABS (UL 94 HB)  
off-white RAL 9002  
140x62,7x30,5mm  
IP 40



**A9067109**  
SMART-CASE L, Vers. I  
ABS (UL 94 HB)  
black RAL 9005  
140x62,7x30,5mm  
IP 40



**A9067117**  
SMART-CASE L, Vers. II  
ABS (UL 94 HB)  
off-white RAL 9002  
140x62,7x30,5mm  
IP 65 opt., IP 40

# SMART-CASE



**A9067119**  
SMART-CASE L, Vers. II  
ABS (UL 94 HB)  
black RAL 9005  
140x62,7x30,5mm  
IP 65 opt., IP 40



**A9067127**  
SMART-CASE L, Vers. III  
ABS (UL 94 HB)  
off-white RAL 9002  
140x62,7x30,5mm  
IP 65 opt., IP 40



**A9067129**  
SMART-CASE L, Vers. III  
ABS (UL 94 HB)  
black RAL 9005  
140x62,7x30,5mm  
IP 65 opt., IP 40



**A9067137**  
SMART-CASE L, Vers. IV  
ABS (UL 94 HB)  
off-white RAL 9002  
140x62,7x30,5mm  
IP 65 opt., IP 40



**A9067139**  
SMART-CASE L, Vers. IV  
ABS (UL 94 HB)  
black RAL 9005  
140x62,7x30,5mm  
IP 65 opt., IP 40



**A9067147**  
SMART-CASE L, Vers. V  
ABS (UL 94 HB)  
off-white RAL 9002  
140x62,7x30,5mm  
IP 65 opt., IP 40



**A9067149**  
SMART-CASE L, Vers. V  
ABS (UL 94 HB)  
black RAL 9005  
140x62,7x30,5mm  
IP 65 opt., IP 40



**A9067209**  
SMART-CASE L, Vers. I  
PMMA (IR) (UL 94 HB)  
black RAL 9005  
140x62,7x30,5mm  
IP 40



**A9067219**  
SMART-CASE L, Vers. II  
PMMA (IR) (UL 94 HB)  
black RAL 9005  
140x62,7x30,5mm  
IP 65 opt., IP 40



**A9067329**  
SMART-CASE L, Vers. III  
ABS (UL 94 HB)  
black RAL 9005  
140x62,7x30,5mm  
IP 65 opt., IP 40



**A9067339**  
SMART-CASE L, Vers. IV  
ABS (UL 94 HB)  
black RAL 9005  
140x62,7x30,5mm  
IP 65 opt., IP 40



**A9067349**  
SMART-CASE L, Vers. V  
ABS (UL 94 HB)  
black RAL 9005  
140x62,7x30,5mm  
IP 65 opt., IP 40



**A9068107**  
SMART-CASE XL, Vers. I  
ABS (UL 94 HB)  
off-white RAL 9002  
168x74,4x35,4mm  
IP 40



**A9068109**  
SMART-CASE XL, Vers. I  
ABS (UL 94 HB)  
black RAL 9005  
168x74,4x35,4mm  
IP 40



**A9068117**  
SMART-CASE XL, Vers. II  
ABS (UL 94 HB)  
off-white RAL 9002  
168x74,4x35,4mm  
IP 65 opt., IP 40



**A9068119**  
SMART-CASE XL, Vers. II  
ABS (UL 94 HB)  
black RAL 9005  
168x74,4x35,4mm  
IP 65 opt., IP 40

# SMART-CASE



**A9068127**  
SMART-CASE XL, Vers. III  
ABS (UL 94 HB)  
off-white RAL 9002  
168x74,4x35,4mm  
IP 65 opt., IP 40



**A9068129**  
SMART-CASE XL, Vers. III  
ABS (UL 94 HB)  
black RAL 9005  
168x74,4x35,4mm  
IP 65 opt., IP 40



**A9068137**  
SMART-CASE XL, Vers. IV  
ABS (UL 94 HB)  
off-white RAL 9002  
168x74,4x35,4mm  
IP 65 opt., IP 40



**A9068139**  
SMART-CASE XL, Vers. IV  
ABS (UL 94 HB)  
black RAL 9005  
168x74,4x35,4mm  
IP 65 opt., IP 40



**A9068147**  
SMART-CASE XL, Vers. V  
ABS (UL 94 HB)  
off-white RAL 9002  
168x74,4x35,4mm  
IP 65 opt., IP 40



**A9068149**  
SMART-CASE XL, Vers. V  
ABS (UL 94 HB)  
black RAL 9005  
168x74,4x35,4mm  
IP 65 opt., IP 40



**A9068209**  
SMART-CASE XL, Vers. I  
PMMA (IR) (UL 94 HB)  
black RAL 9005  
168x74,4x35,4mm  
IP 40



**A9068219**  
SMART-CASE XL, Vers. II  
PMMA (IR) (UL 94 HB)  
black RAL 9005  
168x74,4x35,4mm  
IP 65 opt., IP 40



**A9068329**  
SMART-CASE XL, Vers. III  
ABS (UL 94 HB)  
black RAL 9005  
168x74,4x35,4mm  
IP 65 opt., IP 40



**A9068339**  
SMART-CASE XL, Vers. IV  
ABS (UL 94 HB)  
black RAL 9005  
168x74,4x35,4mm  
IP 65 opt., IP 40



**A9068349**  
SMART-CASE XL, Vers. V  
ABS (UL 94 HB)  
black RAL 9005  
168x74,4x35,4mm  
IP 65 opt., IP 40



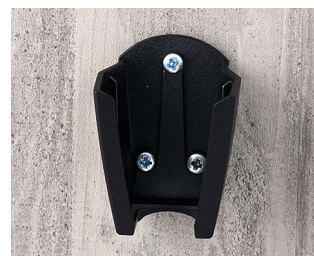
**A9166037**  
Station M  
ABS (UL 94 HB)  
off-white RAL 9002



**A9166039**  
Station M  
ABS (UL 94 HB)  
black RAL 9005



**A9166307**  
Holder M  
ABS (UL 94 HB)  
off-white RAL 9002



**A9166309**  
Holder M  
ABS (UL 94 HB)  
black RAL 9005



**A9167037**  
Station L  
ABS (UL 94 HB)  
off-white RAL 9002

# SMART-CASE



**A9167039**  
Station L  
ABS (UL 94 HB)  
black RAL 9005



**A9167307**  
Holder L  
ABS (UL 94 HB)  
off-white RAL 9002



**A9167309**  
Holder L  
ABS (UL 94 HB)  
black RAL 9005



**A9168037**  
Station XL  
ABS (UL 94 HB)  
off-white RAL 9002



**A9168039**  
Station XL  
ABS (UL 94 HB)  
black RAL 9005



**A9168307**  
Holder XL  
ABS (UL 94 HB)  
off-white RAL 9002



**A9168309**  
Holder XL  
ABS (UL 94 HB)  
black RAL 9005

## Accessory "battery"



**A9160003**  
Plug-in contact, 1 x 9 V (PP3)



**A9166001**  
Set of battery clips, 2 x AAA  
Steel  
tin-plated



**A9166002**  
Battery contact, 2 x AAA  
Steel  
tin-plated



**A9166003**  
Battery holder, 2 x AAA  
PA 6 (UL 94 HB)  
black RAL 9005



**A9190002**  
Set of battery clips,  
2xN/2xAA/2xAAA  
Steel  
tin-plated



**A9190003**  
Set of battery clips,  
2xN/2xAA/2xAAA  
Steel  
nickel-plated

# SMART-CASE

## Accessory "station"



**A9166004**  
Set of pull-relief  
PA 6  
volcano



**A9166037**  
Station M  
ABS (UL 94 HB)  
off-white RAL 9002



**A9166039**  
Station M  
ABS (UL 94 HB)  
black RAL 9005



**A9167037**  
Station L  
ABS (UL 94 HB)  
off-white RAL 9002



**A9167039**  
Station L  
ABS (UL 94 HB)  
black RAL 9005



**A9168037**  
Station XL  
ABS (UL 94 HB)  
off-white RAL 9002



**A9168039**  
Station XL  
ABS (UL 94 HB)  
black RAL 9005

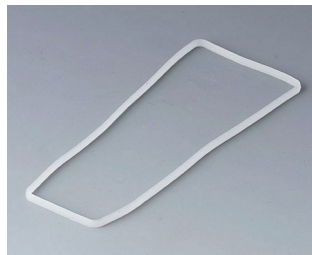


**A9193032**  
Spring contact

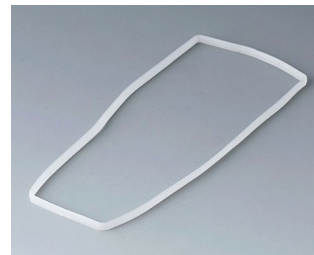
## Accessory "protection"



**A9166004**  
Set of pull-relief  
PA 6  
volcano



**A9167002**  
Sealing L



**A9168002**  
Sealing XL

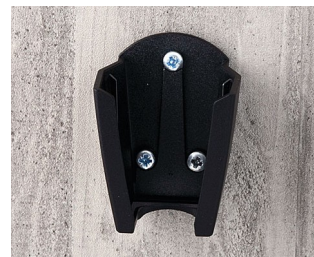
## Accessory "wall/holder"



**A9166005**  
Adhesive foil M



**A9166307**  
Holder M  
ABS (UL 94 HB)  
off-white RAL 9002



**A9166309**  
Holder M  
ABS (UL 94 HB)  
black RAL 9005



**A9167005**  
Adhesive foil L

# SMART-CASE



**A9167027**  
 Holding clamp  
 PA 6 (UL 94 HB)  
 off-white RAL 9002



**A9167029**  
 Holding clamp  
 PA 6 (UL 94 HB)  
 black RAL 9005



**A9167307**  
 Holder L  
 ABS (UL 94 HB)  
 off-white RAL 9002



**A9167309**  
 Holder L  
 ABS (UL 94 HB)  
 black RAL 9005



**A9168005**  
 Adhesive foil XL



**A9168307**  
 Holder XL  
 ABS (UL 94 HB)  
 off-white RAL 9002



**A9168309**  
 Holder XL  
 ABS (UL 94 HB)  
 black RAL 9005

## Accessory "carrying"



**A9100001**  
 Ring eyelet  
 PA 6  
 volcano



**A9100002**  
 Ring eyelet  
 PA 6  
 volcano



**A9164001**  
 Key ring  
 Steel  
 nickel-plated  
 20,5mm



**A9167017**  
 Belt/pocket clip  
 PA 6 (UL 94 HB)  
 off-white RAL 9002



**A9167019**  
 Belt/pocket clip  
 PA 6 (UL 94 HB)  
 black RAL 9005



**B9100063**  
 Carrying strap, textile lanyard  
 black  
 860mm

# SMART-CASE

## Accessory "screws"



**A0304031**  
Self-tapping screws 2.2 x 5 mm  
(PZ1)

## Accessory



**A9166004**  
Set of pull-relief  
PA 6  
volcano



**A9166005**  
Adhesive foil M



**A9167005**  
Adhesive foil L



**A9168005**  
Adhesive foil XL



**A9193030**  
Contact pin  
gold-plated



**A9193032**  
Spring contact

Sujeito à modificações técnicas sem aviso prévio. © de OKW Gehäusesysteme, Buchen/Alemanha.