

EURO CASE

Duże obudowy do urządzeń

Nasze obudowy z serii EURO CASE są wytrzymałe i bardzo łatwe w montażu. Obudowa montowana jest za pomocą bardzo wytrzymałych zatrzasków.

- obudowa do stałych lub przenośnych zastosowań
- dużo miejsca dla elementów operacyjnych i interfejsów
- dwie standardowe szerokości: 42 TE i 63 TE
- cztery wysokości: 1 HE, 2 HE, 3 HE, 6 HE; panele boczne w trzech rozmiarach (0.5 HE, 1 HE i 2 HE)
- dodatkowe płyty boczne mogą być skonfigurowane tak, aby pozwolić na większą wysokość obudowy aby można było zgrupować kilka jednostek
- formowane na etapie produkcji żeberka zwiększają sztywność i wytrzymałość konstrukcji jednocześnie nie dociążając jej
- zwiększona ergonomia podczas używania rozkładanej podstawki, lub wytrzymały uchwyt do przenoszenia
- problemy z chłodzeniem można rozwiązać za pomocą wtykanych paneli z otworami wentylacyjnymi
- wytrzymała konstrukcja zatrzaskowa
- minimum montażu dzięki specjalnemu mechanizmowi zatrzaskowemu OKW
- aluminiowe panele przednie zamawiane oddzielnie, wystarczy wsunąć
- dostosuje EURO CASE do swojego firmowego wyglądu, na przykład dopierając kolor pod własną firmę
- klasa szczelności IP 40
- wewnętrzne słupki do montażu PCB itp.
- cztery antypoślizgowe nóżki w komplecie



EURO CASE

Aplikacje i przykłady

Pomiary i sterowanie, urządzenia peryferyjne, sprzęt laboratoryjny, wyroby medyczne i zdrowotne, itp.



Light therapy device

Opcje dostosowywania

Czego potrzebujesz do spersonalizowania, swojego produktu? Dostarczamy obudowy i pokręta wraz ze wszystkimi niezbędnymi wymaganymi modyfikacjami.

Opcje dostosowywania dla Euro Case



Obróbka obudów



Lakierowanie



Nadruk



Znakowanie laserowe



Specjalne materiały



Powłoka EMC

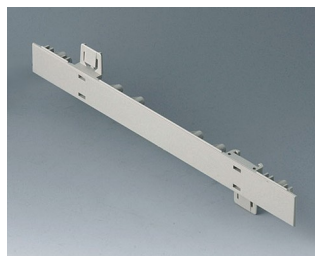


Instalacja / montaż

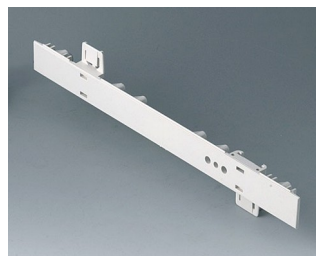
Wersje



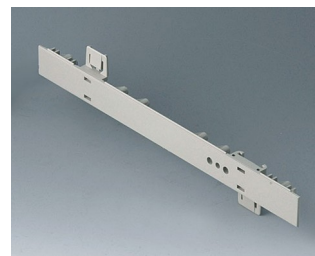
A0105270
Side panel 0.5 HE
ABS (UL 94 HB)
off-white RAL 9002
250x22,25mm



A0105280
Side panel 0.5 HE
ABS (UL 94 HB)
pebble grey RAL 7032
250x22,25mm

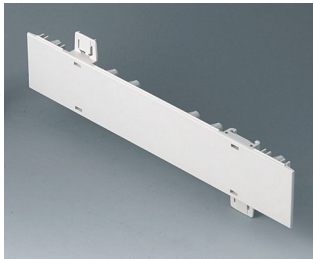


A0106270
Side panel 0.5 HE, for handle
mounting
ABS (UL 94 HB)
off-white RAL 9002
250x22,25mm



A0106280
Side panel 0.5 HE, for handle
mounting
ABS (UL 94 HB)
pebble grey RAL 7032
250x22,25mm

EURO CASE



A0110270
Side panel 1 HE
ABS (UL 94 HB)
off-white RAL 9002
250x44,45mm



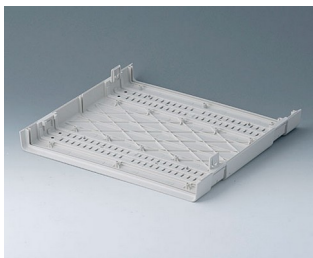
A0110280
Side panel 1 HE
ABS (UL 94 HB)
pebble grey RAL 7032
250x44,45mm



A0111270
Side panel 1 HE, for handle
mounting
ABS (UL 94 HB)
off-white RAL 9002
250x44,45mm



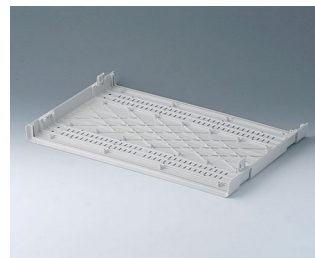
A0111280
Side panel 1 HE, for handle
mounting
ABS (UL 94 HB)
pebble grey RAL 7032
250x44,45mm



A0114170
Shell 42 TE
ABS (UL 94 HB)
off-white RAL 9002
260x250x27mm



A0114370
Snap-in panel, without slots
ABS (UL 94 HB)
off-white RAL 9002



A0116170
Shell 63 TE
ABS (UL 94 HB)
off-white RAL 9002
367x250x27mm



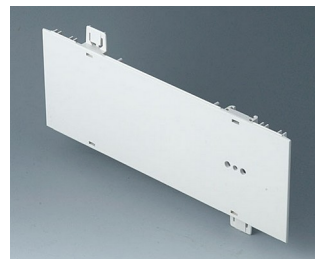
A0116370
Snap-in panel, without slots
ABS (UL 94 HB)
off-white RAL 9002



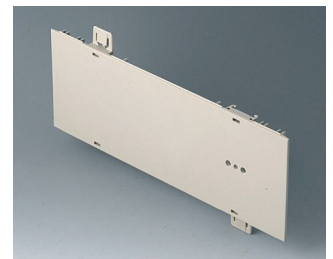
A0120270
Side panel 2 HE
ABS (UL 94 HB)
off-white RAL 9002
250x88,9mm



A0120280
Side panel 2 HE
ABS (UL 94 HB)
pebble grey RAL 7032
250x88,9mm



A0121270
Side panel 2 HE, for handle
mounting
ABS (UL 94 HB)
off-white RAL 9002
250x88,9mm



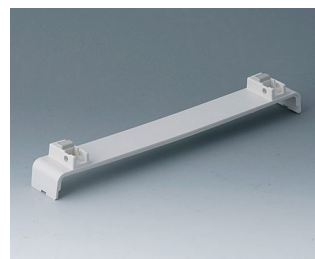
A0121280
Side panel 2 HE, for handle
mounting
ABS (UL 94 HB)
pebble grey RAL 7032
250x88,9mm



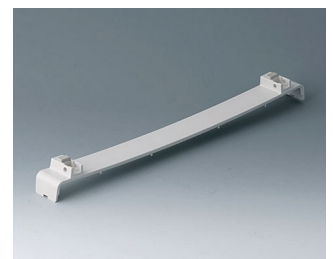
A0124370
Snap-in panel, with slots
ABS (UL 94 HB)
off-white RAL 9002



A0126370
Snap-in panel, with slots
ABS (UL 94 HB)
off-white RAL 9002



A0134370
Snap-in panel, without slots, with
feet
ABS (UL 94 HB)
off-white RAL 9002



A0136370
Snap-in panel, without slots, with
feet
ABS (UL 94 HB)
off-white RAL 9002

EURO CASE



A0144370
Snap-in panel with, slots, with feet
ABS (UL 94 HB)
off-white RAL 9002



A0146370
Snap-in panel, with slots, with feet
ABS (UL 94 HB)
off-white RAL 9002



A0214070
EURO CASE 42 TE, without handle
ABS (UL 94 HB)
off-white RAL 9002
260x250x54mm



A0214170
EURO CASE 42 TE, without handle
ABS (UL 94 HB)
off-white RAL 9002
260x250x54mm



A0214270
EURO CASE 42 TE, without handle
ABS (UL 94 HB)
off-white RAL 9002
260x250x54mm



A0216070
EURO CASE 63 TE, without handle
ABS (UL 94 HB)
off-white RAL 9002
367x250x54mm



A0216170
EURO CASE 63 TE, without handle
ABS (UL 94 HB)
off-white RAL 9002
367x250x54mm



A0216270
EURO CASE 63 TE, without handle
ABS (UL 94 HB)
off-white RAL 9002
367x250x54mm



A0224070
EURO CASE 42 TE, without handle
ABS (UL 94 HB)
off-white RAL 9002
260x250x98,5mm



A0224170
EURO CASE 42 TE, without handle
ABS (UL 94 HB)
off-white RAL 9002
260x250x98,5mm



A0224270
EURO CASE 42 TE, without handle
ABS (UL 94 HB)
off-white RAL 9002
260x250x98,5mm



A0224470
EURO CASE 42 TE, with handle
ABS (UL 94 HB)
off-white RAL 9002
260x250x98,5mm



A0224570
EURO CASE 42 TE, with handle
ABS (UL 94 HB)
off-white RAL 9002
260x250x98,5mm



A0224670
EURO CASE 42 TE, with handle
ABS (UL 94 HB)
off-white RAL 9002
260x250x98,5mm



A0226070
EURO CASE 63 TE, without handle
ABS (UL 94 HB)
off-white RAL 9002
367x250x98,5mm



A0226170
EURO CASE 63 TE, without handle
ABS (UL 94 HB)
off-white RAL 9002
367x250x98,5mm

EURO CASE



A0226270
EURO CASE 63 TE, without handle
ABS (UL 94 HB)
off-white RAL 9002
367x250x98,5mm



A0226470
EURO CASE 63 TE, with handle
ABS (UL 94 HB)
off-white RAL 9002
367x250x98,5mm



A0226570
EURO CASE 63 TE, with handle
ABS (UL 94 HB)
off-white RAL 9002
367x250x98,5mm



A0226670
EURO CASE 63 TE, with handle
ABS (UL 94 HB)
off-white RAL 9002
367x250x98,5mm



A0234070
EURO CASE 42 TE, without handle
ABS (UL 94 HB)
off-white RAL 9002
260x250x143mm



A0234170
EURO CASE 42 TE, without handle
ABS (UL 94 HB)
off-white RAL 9002
260x250x143mm



A0234270
EURO CASE 42 TE, without handle
ABS (UL 94 HB)
off-white RAL 9002
260x250x143mm



A0234470
EURO CASE 42 TE, with handle
ABS (UL 94 HB)
off-white RAL 9002
260x250x143mm



A0234570
EURO CASE 42 TE, with handle
ABS (UL 94 HB)
off-white RAL 9002
260x250x143mm



A0234670
EURO CASE 42 TE, with handle
ABS (UL 94 HB)
off-white RAL 9002
260x250x143mm



A0236070
EURO CASE 63 TE, without handle
ABS (UL 94 HB)
off-white RAL 9002
367x250x143mm



A0236170
EURO CASE 63 TE, without handle
ABS (UL 94 HB)
off-white RAL 9002
367x250x143mm



A0236270
EURO CASE 63 TE, without handle
ABS (UL 94 HB)
off-white RAL 9002
367x250x143mm



A0236470
EURO CASE 63 TE, with handle
ABS (UL 94 HB)
off-white RAL 9002
367x250x143mm



A0236570
EURO CASE 63 TE, with handle
ABS (UL 94 HB)
off-white RAL 9002
367x250x143mm



A0236670
EURO CASE 63 TE, with handle
ABS (UL 94 HB)
off-white RAL 9002
367x250x143mm

EURO CASE



A0266070
EURO CASE 63 TE, without handle
ABS (UL 94 HB)
off-white RAL 9002
367x250x276,5mm



A0266170
EURO CASE 63 TE, without handle
ABS (UL 94 HB)
off-white RAL 9002
367x250x276,5mm



A0266270
EURO CASE 63 TE, without handle
ABS (UL 94 HB)
off-white RAL 9002
367x250x276,5mm



A0344216
Handle 42 TE
PA 6
off-white RAL 9002



A0344217
Handle 42 TE
PA 6
off-white RAL 9002



A0344218
Handle 42 TE
PA 6
pebble grey RAL 7032



A0346316
Handle 63 TE
PA 6
off-white RAL 9002

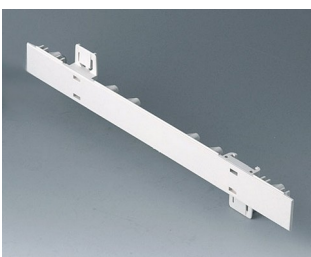


A0346317
Handle 63 TE
PA 6
off-white RAL 9002

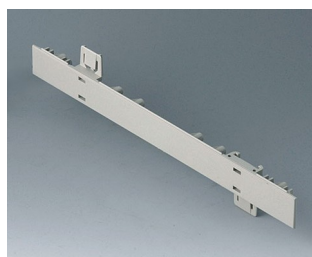


A0346318
Handle 63 TE
PA 6
pebble grey RAL 7032

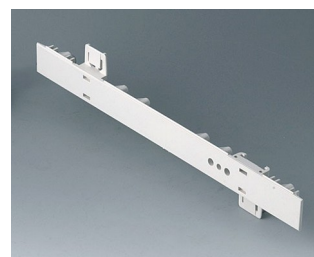
System components to complete



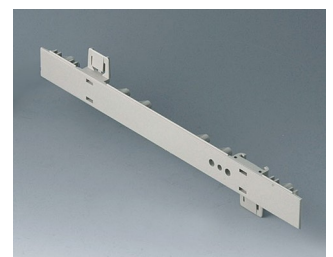
A0105270
Side panel 0.5 HE
ABS (UL 94 HB)
off-white RAL 9002
250x22,25mm



A0105280
Side panel 0.5 HE
ABS (UL 94 HB)
pebble grey RAL 7032
250x22,25mm

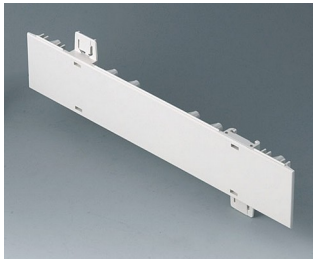


A0106270
Side panel 0.5 HE, for handle mounting
ABS (UL 94 HB)
off-white RAL 9002
250x22,25mm



A0106280
Side panel 0.5 HE, for handle mounting
ABS (UL 94 HB)
pebble grey RAL 7032
250x22,25mm

EURO CASE



A0110270
Side panel 1 HE
ABS (UL 94 HB)
off-white RAL 9002
250x44,45mm



A0110280
Side panel 1 HE
ABS (UL 94 HB)
pebble grey RAL 7032
250x44,45mm



A0111270
Side panel 1 HE, for handle
mounting
ABS (UL 94 HB)
off-white RAL 9002
250x44,45mm



A0111280
Side panel 1 HE, for handle
mounting
ABS (UL 94 HB)
pebble grey RAL 7032
250x44,45mm



A0114370
Snap-in panel, without slots
ABS (UL 94 HB)
off-white RAL 9002



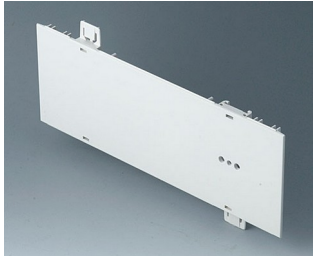
A0116370
Snap-in panel, without slots
ABS (UL 94 HB)
off-white RAL 9002



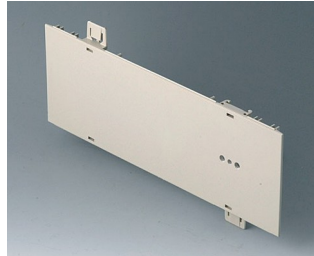
A0120270
Side panel 2 HE
ABS (UL 94 HB)
off-white RAL 9002
250x88,9mm



A0120280
Side panel 2 HE
ABS (UL 94 HB)
pebble grey RAL 7032
250x88,9mm



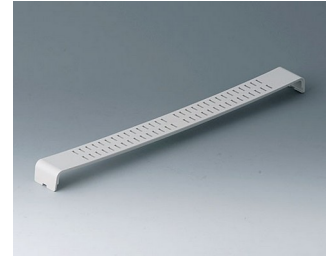
A0121270
Side panel 2 HE, for handle
mounting
ABS (UL 94 HB)
off-white RAL 9002
250x88,9mm



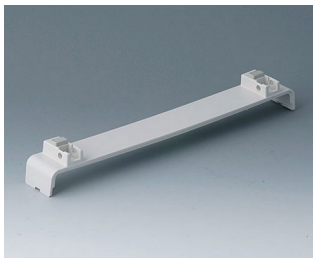
A0121280
Side panel 2 HE, for handle
mounting
ABS (UL 94 HB)
pebble grey RAL 7032
250x88,9mm



A0124370
Snap-in panel, with slots
ABS (UL 94 HB)
off-white RAL 9002



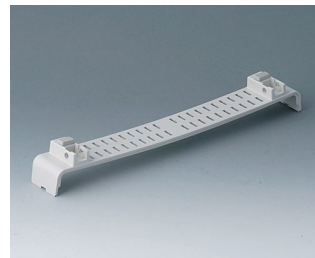
A0126370
Snap-in panel, with slots
ABS (UL 94 HB)
off-white RAL 9002



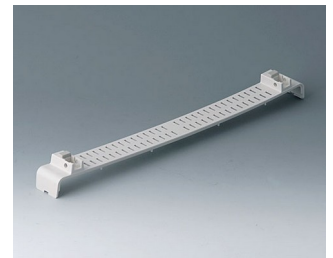
A0134370
Snap-in panel, without slots, with
feet
ABS (UL 94 HB)
off-white RAL 9002



A0136370
Snap-in panel, without slots, with
feet
ABS (UL 94 HB)
off-white RAL 9002



A0144370
Snap-in panel with, slots, with
feet
ABS (UL 94 HB)
off-white RAL 9002



A0146370
Snap-in panel, with slots, with
feet
ABS (UL 94 HB)
off-white RAL 9002

EURO CASE



A0344216
Handle 42 TE
PA 6
off-white RAL 9002



A0344217
Handle 42 TE
PA 6
off-white RAL 9002



A0344218
Handle 42 TE
PA 6
pebble grey RAL 7032



A0346316
Handle 63 TE
PA 6
off-white RAL 9002



A0346317
Handle 63 TE
PA 6
off-white RAL 9002



A0346318
Handle 63 TE
PA 6
pebble grey RAL 7032

Accessory to complete



A0314270
Front / rear panel 42 TE 1 HE
Aluminium
matt anodised
250,8x46,3x2mm



A0316370
Front / rear panel 63 TE 1 HE
Aluminium
matt anodised
357,8x46,3x2mm



A0324270
Front / rear panel 42 TE 2 HE
Aluminium
matt anodised
250,8x90,7x2mm



A0326370
Front / rear panel 63 TE 2 HE
Aluminium
matt anodised
357,8x90,7x2mm



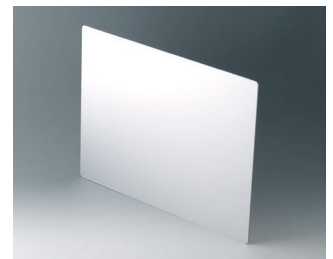
A0334270
Front / rear panel 42 TE 3 HE
Aluminium
matt anodised
250,8x135,2x2mm



A0336370
Front / rear panel 63 TE 3 HE
Aluminium
matt anodised
357,8x135,2x2mm



A0354270
Front / rear panel 42 TE 1.5 HE
Aluminium
matt anodised
250,8x68,5x2mm



A0366370
Front / rear panel 63 TE 6 HE
Aluminium
matt anodised
268,6x357,8x2mm

EURO CASE

Accessory "screws"



A0306031
Self-tapping screws 3 x 6 mm
(PZ1)



A0308031
Self-tapping screws 3 x 8 mm
(PZ1)



A0308132
Self-tapping screw 3 x 8 mm
(T10)
Stainless steel

Accessory



A0350007
Tilt foot
ABS (UL 94 HB)
off-white RAL 9002

Subject to technical modification without notice. © by OKW Gehäusesysteme, Buchen/Germany.