

MINITEC

Poręczne obudowy do zdalnego sterowania – doskonały design dla "osobistej" elektroniki

Obudowy MINITEC przekonują użytkownika swoimi mini wymiarami i maksymalnymi korzyściami. Wybierz pomiędzy technicznym "MINITEC EDGE", czy w bardziej stylowym "MINITEC DROP" .

- nowoczesne, płaskie wzornictwo *****iF product design award*****
- łatwe do noszenia i zawsze w zasięgu ręki, na przykład na szyi lub nadgarstku, na z kluczami lub na pasku
- pierścienie pośrednie w różnych wersjach i kolorach; materiał TPE dla przyjemnego odczucia podczas dotyku i ochronę przed uderzeniami
- ABS (UL 94 HB); dostępny również z materiału PMMA plexiglas - przepuszczającego światło podczerwone
- zagłębienie pod klawiaturę membranową lub folią dekoracyjną; MINITEC Edge dostępny również z gładką powierzchnią pod przyciski
- klasa szczelności IP 41: kształt Edge (rozmiar M) i Drop (rozmiar S i M) z pierścieniem pośrednim z TPE, wszystkie inne IP 40
- zamawiane jako oddzielne komponenty dla wielu kombinacji wzoru/koloru, 3 rozmiary każdego

Aby zmontować jeden Minitec, należy zamówić:

1 dolną i górną część

1 pierścień pośredni

(wkręty w zestawie)

Oświadczenie projektanta

"Świeże kolory i kształty dla aktywnych: możesz nosić MINITEC blisko ciała, na smyczy, pasku lub pasku na rękę. Mobilne funkcje inteligentnego domu i rozwiązania IoT mogą być optymalnie zintegrowane z MINITEC. Forma organiczna "Drop" i bardziej techniczny projekt "Edge" - w połączeniu z kolorowymi aplikacjami dają możliwość wycucia systemu - sprytna obudowa, która staje się widocznym i namacalnym ambasadorem Twojego produktu!"
Martin Nußberger, Polyform Industrie Design

MINITEC



MINITEC

Aplikacje i przykłady

Wiele rodzajów systemów zdalnego sterowania. Zastosowanie w medycznych i społecznych dziedzinach, a także w gospodarstwach domowych i przemyśle, np systemy awaryjne, monitoring i urządzenia alarmowe, sterowanie radiowe itd. Rozwiązania mobilne USB, np kompaktowe urządzenia pomiarowe i zapisu. IoT/IloT. Do noszenia.



A personal alarm on your mobile phone



GPS tracking in real time



LoRa GPS tracker with alarm button



Mobile air quality monitoring



Mobile RFID information system



Mobile Security Solutions for workers



Mobile UHF RFID scanner



Portable ultrasonic device for veterinary medicine



Radio paging systems



Radio transmitter for emergency call system for patients



RFID sensor transponder and data logger



Smart TAG



Tension meter for measuring belt pretension

Opcje dostosowywania

Czego potrzebujesz do spersonalizowania, swojego produktu? Dostarczamy obudowy i pokrętła wraz ze wszystkimi niezbędnymi wymaganymi modyfikacjami.

Opcje dostosowywania dla Minitec

MINITEC



Obróbka obudów



Lakierowanie



Nadruk



Znakowanie laserowe



Folie dekoracyjne



Specjalne materiały



Powłoka EMC



Instalacja / montaż

Wersje



B9002302
Intermediate ring DS
TPE
lava



B9002303
Intermediate ring DS
SEBS (TPE)
orange



B9002304
Intermediate ring DS
SEBS (TPE)
green



B9002305
Intermediate ring DS
TPE
blue



B9002306
Intermediate ring DS
PMMA (IR) (UL 94 HB)
black RAL 9005



B9002307
Intermediate ring DS
SEBS (TPE)
off-white RAL 9002



B9002308
Intermediate ring DS
TPE
volcano



B9002309
Intermediate ring DS
ABS (UL 94 HB)
black RAL 9005

MINITEC



B9002352
Intermediate ring DS
TPE
lava



B9002353
Intermediate ring DS
TPE
orange



B9002354
Intermediate ring DS
TPE
green



B9002355
Intermediate ring DS
TPE
blue



B9002356
Intermediate ring DS
PMMA (IR) (UL 94 HB)
black RAL 9005



B9002357
Intermediate ring DS
SEBS (TPE)
off-white RAL 9002



B9002358
Intermediate ring DS
TPE
volcano



B9002359
Intermediate ring DS
ABS (UL 94 HB)
black RAL 9005



B9002702
Intermediate ring ES
TPE
lava



B9002703
Intermediate ring ES
TPE
orange



B9002704
Intermediate ring ES
TPE
green



B9002705
Intermediate ring ES
TPE
blue



B9002706
Intermediate ring ES
PMMA (IR) (UL 94 HB)
black RAL 9005



B9002707
Intermediate ring ES
TPE
off-white RAL 9002



B9002708
Intermediate ring ES
TPE
volcano



B9002709
Intermediate ring ES
ABS (UL 94 HB)
black RAL 9005

MINITEC



B9002752
Intermediate ring ES
TPE
lava



B9002753
Intermediate ring ES
TPE
orange



B9002754
Intermediate ring ES
TPE
green



B9002755
Intermediate ring ES
TPE
blue



B9002756
Intermediate ring ES
PMMA (IR) (UL 94 HB)
black RAL 9005



B9002757
Intermediate ring ES
TPE
off-white RAL 9002



B9002758
Intermediate ring ES
TPE
volcano



B9002759
Intermediate ring ES
ABS (UL 94 HB)
black RAL 9005



B9002806
Bottom and top part ES
PMMA (IR) (UL 94 HB)
black RAL 9005
52x32x15mm



B9002807
Bottom and top part ES
ABS (UL 94 HB)
off-white RAL 9002
52x32x15mm



B9002808
Bottom and top part ES
ABS (UL 94 HB)
lava
52x32x15mm



B9002856
Bottom and top part ES
PMMA (IR) (UL 94 HB)
black RAL 9005
52x32x15mm



B9002857
Bottom and top part ES
ABS (UL 94 HB)
off-white RAL 9002
52x32x15mm



B9002858
Bottom and top part ES
ABS (UL 94 HB)
lava
52x32x15mm



B9002906
Bottom and top part DS
PMMA (IR) (UL 94 HB)
black RAL 9005
51x32x13mm



B9002907
Bottom and top part DS
ABS (UL 94 HB)
off-white RAL 9002
51x32x13mm

MINITEC



B9002908
Bottom and top part DS
ABS (UL 94 HB)
lava
51x32x13mm



B9004302
Intermediate ring DM
TPE
lava



B9004303
Intermediate ring DM
TPE
orange



B9004304
Intermediate ring DM
TPE
green



B9004305
Intermediate ring DM
TPE
blue



B9004306
Intermediate ring DM
PMMA (IR) (UL 94 HB)
black RAL 9005



B9004307
Intermediate ring DM
SEBS (TPE)
off-white RAL 9002



B9004308
Intermediate ring DM
TPE
volcano



B9004309
Intermediate ring DM
ABS (UL 94 HB)
black RAL 9005



B9004702
Intermediate ring EM
TPE
lava



B9004703
Intermediate ring EM
TPE
orange



B9004704
Intermediate ring EM
TPE
green



B9004705
Intermediate ring EM
TPE
blue



B9004706
Intermediate ring EM
PMMA (IR) (UL 94 HB)
black RAL 9005



B9004707
Intermediate ring EM
TPE
off-white RAL 9002



B9004708
Intermediate ring EM
TPE
volcano

MINITEC



B9004709
Intermediate ring EM
ABS (UL 94 HB)
black RAL 9005



B9004752
Intermediate ring EM
TPE
lava



B9004753
Intermediate ring EM
SEBS (TPE)
orange



B9004754
Intermediate ring EM
TPE
green



B9004755
Intermediate Ring EM
TPE
blue



B9004756
Intermediate ring EM
PMMA (IR) (UL 94 HB)
black RAL 9005



B9004757
Intermediate ring EM
SEBS (TPE)
off-white RAL 9002



B9004758
Intermediate Ring EM
TPE
volcano



B9004759
Intermediate ring EM
ABS (UL 94 HB)
black RAL 9005



B9004776
Intermediate ring EM, Micro USB
5 P, B Type SMT
PMMA (IR) (UL 94 HB)
black RAL 9005



B9004778
Intermediate ring EM, Micro USB
5 P, B Type SMT
SEBS (TPE)
volcano



B9004779
Intermediate ring EM, Micro USB
5 P, B Type SMT
ABS (UL 94 HB)
black RAL 9005



B9004782
Intermediate ring EM, high
SEBS (TPE)
lava



B9004783
Intermediate ring EM, high
TPE
orange



B9004784
Intermediate ring EM, high
SEBS (TPE)
green



B9004785
Intermediate ring EM, high
TPE
blue

MINITEC



B9004786
Intermediate ring EM, high
PMMA (IR) (UL 94 HB)
black RAL 9005



B9004787
Intermediate ring EM, high
SEBS (TPE)
off-white RAL 9002



B9004788
Intermediate ring EM, high
TPE
volcano



B9004789
Intermediate ring EM, high
ABS (UL 94 HB)
black RAL 9005



B9004796
Intermediate ring EM, USB type
A
PMMA (IR) (UL 94 HB)
black RAL 9005



B9004798
Intermediate ring EM, USB type
A
TPE
volcano



B9004799
Intermediate ring EM, USB type
A
ABS (UL 94 HB)
black RAL 9005



B9004806
Bottom and top part EM
PMMA (IR) (UL 94 HB)
black RAL 9005
68x42x18mm



B9004807
Bottom and top part EM
ABS (UL 94 HB)
off-white RAL 9002
68x42x18mm



B9004808
Bottom and top part EM
ABS (UL 94 HB)
lava
68x42x18mm



B9004856
Bottom and top part EM
PMMA (IR) (UL 94 HB)
black RAL 9005
68x42x18mm



B9004857
Bottom and top part EM
ABS (UL 94 HB)
off-white RAL 9002
68x42x18mm



B9004858
Bottom and top part EM
ABS (UL 94 HB)
lava
68x42x18mm



B9004906
Bottom and top part DM
PMMA (IR) (UL 94 HB)
black RAL 9005
70x44x16mm



B9004907
Bottom and top part DM
ABS (UL 94 HB)
off-white RAL 9002
70x44x16mm



B9004908
Bottom and top part DM
ABS (UL 94 HB)
lava
70x44x16mm

MINITEC



B9006302
 Intermediate ring DL
 TPE
 lava



B9006303
 Intermediate ring DL
 TPE
 orange



B9006304
 Intermediate ring DL
 TPE
 green



B9006305
 Intermediate ring DL
 TPE
 blue



B9006306
 Intermediate ring DL
 PMMA (IR) (UL 94 HB)
 black RAL 9005



B9006307
 Intermediate ring DL
 SEBS (TPE)
 off-white RAL 9002



B9006308
 Intermediate ring DL
 TPE
 volcano



B9006309
 Intermediate ring DL
 ABS (UL 94 HB)
 black RAL 9005



B9006702
 Intermediate ring EL
 TPE
 lava



B9006703
 Intermediate ring EL
 TPE
 orange



B9006704
 Intermediate ring EL
 SEBS (TPE)
 green



B9006705
 Intermediate ring EL
 TPE
 blue



B9006706
 Intermediate ring EL
 PMMA (IR) (UL 94 HB)
 black RAL 9005



B9006707
 Intermediate ring EL
 SEBS (TPE)
 off-white RAL 9002



B9006708
 Intermediate ring EL
 TPE
 volcano



B9006709
 Intermediate ring EL
 ABS (UL 94 HB)
 black RAL 9005

MINITEC



B9006752
Intermediate ring EL
TPE
lava



B9006753
Intermediate ring EL
TPE
orange



B9006754
Intermediate ring EL
SEBS (TPE)
green



B9006755
Intermediate ring EL
TPE
blue



B9006756
Intermediate ring EL
PMMA (IR) (UL 94 HB)
black RAL 9005



B9006757
Intermediate ring EL
TPE
off-white RAL 9002



B9006758
Intermediate ring EL
TPE
volcano



B9006759
Intermediate ring EL
ABS (UL 94 HB)
black RAL 9005



B9006806
Bottom and top part EL
PMMA (IR) (UL 94 HB)
black RAL 9005
78x48x20mm



B9006807
Bottom and top part EL
ABS (UL 94 HB)
off-white RAL 9002
78x48x20mm



B9006808
Bottom and top part EL
ABS (UL 94 HB)
lava
78x48x20mm



B9006816
Bottom and top part EL
PMMA (IR) (UL 94 HB)
black RAL 9005
78x48x24mm



B9006817
Bottom and top part EL
ABS (UL 94 HB)
off-white RAL 9002
78x48x24mm



B9006818
Bottom and top part EL
ABS (UL 94 HB)
lava
78x48x24mm



B9006826
Bottom and top part EL
PMMA (IR) (UL 94 HB)
black RAL 9005
78x48x26mm



B9006827
Bottom and top part EL
ABS (UL 94 HB)
off-white RAL 9002
78x48x26mm

MINITEC



B9006828
Bottom and top part EL
ABS (UL 94 HB)
lava
78x48x26mm



B9006856
Bottom and top part EL
PMMA (IR) (UL 94 HB)
black RAL 9005
78x48x20mm



B9006857
Bottom and top part EL
ABS (UL 94 HB)
off-white RAL 9002
78x48x20mm



B9006858
Bottom and top part EL
ABS (UL 94 HB)
lava
78x48x20mm



B9006906
Bottom and top part DL
PMMA (IR) (UL 94 HB)
black RAL 9005
84x53x19mm



B9006907
Bottom and top part DL
ABS (UL 94 HB)
off-white RAL 9002
84x53x19mm



B9006908
Bottom and top part DL
ABS (UL 94 HB)
lava
84x53x19mm

System components to complete



B9002302
Intermediate ring DS
TPE
lava



B9002303
Intermediate ring DS
SEBS (TPE)
orange



B9002304
Intermediate ring DS
SEBS (TPE)
green



B9002305
Intermediate ring DS
TPE
blue



B9002306
Intermediate ring DS
PMMA (IR) (UL 94 HB)
black RAL 9005



B9002307
Intermediate ring DS
SEBS (TPE)
off-white RAL 9002



B9002308
Intermediate ring DS
TPE
volcano



B9002309
Intermediate ring DS
ABS (UL 94 HB)
black RAL 9005

MINITEC



B9002352
 Intermediate ring DS
 TPE
 lava



B9002353
 Intermediate ring DS
 TPE
 orange



B9002354
 Intermediate ring DS
 TPE
 green



B9002355
 Intermediate ring DS
 TPE
 blue



B9002356
 Intermediate ring DS
 PMMA (IR) (UL 94 HB)
 black RAL 9005



B9002357
 Intermediate ring DS
 SEBS (TPE)
 off-white RAL 9002



B9002358
 Intermediate ring DS
 TPE
 volcano



B9002359
 Intermediate ring DS
 ABS (UL 94 HB)
 black RAL 9005



B9002702
 Intermediate ring ES
 TPE
 lava



B9002703
 Intermediate ring ES
 TPE
 orange



B9002704
 Intermediate ring ES
 TPE
 green



B9002705
 Intermediate ring ES
 TPE
 blue



B9002706
 Intermediate ring ES
 PMMA (IR) (UL 94 HB)
 black RAL 9005



B9002707
 Intermediate ring ES
 TPE
 off-white RAL 9002



B9002708
 Intermediate ring ES
 TPE
 volcano



B9002709
 Intermediate ring ES
 ABS (UL 94 HB)
 black RAL 9005

MINITEC



B9002752
 Intermediate ring ES
 TPE
 lava



B9002753
 Intermediate ring ES
 TPE
 orange



B9002754
 Intermediate ring ES
 TPE
 green



B9002755
 Intermediate ring ES
 TPE
 blue



B9002756
 Intermediate ring ES
 PMMA (IR) (UL 94 HB)
 black RAL 9005



B9002757
 Intermediate ring ES
 TPE
 off-white RAL 9002



B9002758
 Intermediate ring ES
 TPE
 volcano



B9002759
 Intermediate ring ES
 ABS (UL 94 HB)
 black RAL 9005



B9004302
 Intermediate ring DM
 TPE
 lava



B9004303
 Intermediate ring DM
 TPE
 orange



B9004304
 Intermediate ring DM
 TPE
 green



B9004305
 Intermediate ring DM
 TPE
 blue



B9004306
 Intermediate ring DM
 PMMA (IR) (UL 94 HB)
 black RAL 9005



B9004307
 Intermediate ring DM
 SEBS (TPE)
 off-white RAL 9002



B9004308
 Intermediate ring DM
 TPE
 volcano



B9004309
 Intermediate ring DM
 ABS (UL 94 HB)
 black RAL 9005

MINITEC



B9004702
 Intermediate ring EM
 TPE
 black lava



B9004703
 Intermediate ring EM
 TPE
 orange



B9004704
 Intermediate ring EM
 TPE
 green



B9004705
 Intermediate ring EM
 TPE
 blue



B9004706
 Intermediate ring EM
 PMMA (IR) (UL 94 HB)
 black RAL 9005



B9004707
 Intermediate ring EM
 TPE
 off-white RAL 9002



B9004708
 Intermediate ring EM
 TPE
 volcano



B9004709
 Intermediate ring EM
 ABS (UL 94 HB)
 black RAL 9005



B9004752
 Intermediate ring EM
 TPE
 black lava



B9004753
 Intermediate ring EM
 SEBS (TPE)
 orange



B9004754
 Intermediate ring EM
 TPE
 green



B9004755
 Intermediate Ring EM
 TPE
 blue



B9004756
 Intermediate ring EM
 PMMA (IR) (UL 94 HB)
 black RAL 9005



B9004757
 Intermediate ring EM
 SEBS (TPE)
 off-white RAL 9002



B9004758
 Intermediate Ring EM
 TPE
 volcano



B9004759
 Intermediate ring EM
 ABS (UL 94 HB)
 black RAL 9005

MINITEC



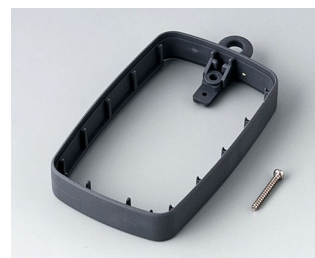
B9004776
Intermediate ring EM, Micro USB
5 P, B Type SMT
PMMA (IR) (UL 94 HB)
black RAL 9005



B9004778
Intermediate ring EM, Micro USB
5 P, B Type SMT
SEBS (TPE)
volcano



B9004779
Intermediate ring EM, Micro USB
5 P, B Type SMT
ABS (UL 94 HB)
black RAL 9005



B9004782
Intermediate ring EM, high
SEBS (TPE)
lava



B9004783
Intermediate ring EM, high
TPE
orange



B9004784
Intermediate ring EM, high
SEBS (TPE)
green



B9004785
Intermediate ring EM, high
TPE
blue



B9004786
Intermediate ring EM, high
PMMA (IR) (UL 94 HB)
black RAL 9005



B9004787
Intermediate ring EM, high
SEBS (TPE)
off-white RAL 9002



B9004788
Intermediate ring EM, high
TPE
volcano



B9004789
Intermediate ring EM, high
ABS (UL 94 HB)
black RAL 9005



B9004796
Intermediate ring EM, USB type
A
PMMA (IR) (UL 94 HB)
black RAL 9005



B9004798
Intermediate ring EM, USB type
A
TPE
volcano



B9004799
Intermediate ring EM, USB type
A
ABS (UL 94 HB)
black RAL 9005



B9006302
Intermediate ring DL
TPE
lava



B9006303
Intermediate ring DL
TPE
orange

MINITEC



B9006304
 Intermediate ring DL
 TPE
 green



B9006305
 Intermediate ring DL
 TPE
 blue



B9006306
 Intermediate ring DL
 PMMA (IR) (UL 94 HB)
 black RAL 9005



B9006307
 Intermediate ring DL
 SEBS (TPE)
 off-white RAL 9002



B9006308
 Intermediate ring DL
 TPE
 volcano



B9006309
 Intermediate ring DL
 ABS (UL 94 HB)
 black RAL 9005



B9006702
 Intermediate ring EL
 TPE
 lava



B9006703
 Intermediate ring EL
 TPE
 orange



B9006704
 Intermediate ring EL
 SEBS (TPE)
 green



B9006705
 Intermediate ring EL
 TPE
 blue



B9006706
 Intermediate ring EL
 PMMA (IR) (UL 94 HB)
 black RAL 9005



B9006707
 Intermediate ring EL
 SEBS (TPE)
 off-white RAL 9002



B9006708
 Intermediate ring EL
 TPE
 volcano



B9006709
 Intermediate ring EL
 ABS (UL 94 HB)
 black RAL 9005



B9006752
 Intermediate ring EL
 TPE
 lava



B9006753
 Intermediate ring EL
 TPE
 orange

MINITEC



B9006754
Intermediate ring EL
SEBS (TPE)
green



B9006755
Intermediate ring EL
TPE
blue



B9006756
Intermediate ring EL
PMMA (IR) (UL 94 HB)
black RAL 9005



B9006757
Intermediate ring EL
TPE
off-white RAL 9002



B9006758
Intermediate ring EL
TPE
volcano



B9006759
Intermediate ring EL
ABS (UL 94 HB)
black RAL 9005



B9006782
Intermediate ring EL
SEBS (TPE)
lava



B9006783
Intermediate ring EL
TPE
orange



B9006784
Intermediate ring EL
SEBS (TPE)
green



B9006785
Intermediate ring EL
TPE
blue



B9006786
Intermediate ring EL
PMMA (IR) (UL 94 HB)
black RAL 9005



B9006787
Intermediate ring EL
SEBS (TPE)
off-white RAL 9002



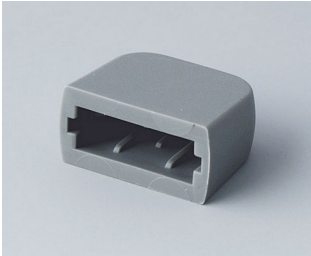
B9006788
Intermediate ring EL
TPE
volcano



B9006789
Intermediate ring EL
ABS (UL 94 HB)
black RAL 9005

MINITEC

Accessory "protection"



A9320008
USB end cover
TPE
volcano

Accessory "carrying"



A9164001
Key ring
Steel
nickel-plated
20,5mm



B9100033
Wrist strap
black
280mm



B9100063
Carrying strap, textile lanyard
black
860mm



B9100073
Carrying strap, textile lanyard
black
914x16mm



B9106108
Strap eyelet EL
ABS (UL 94 HB)
lava

Accessory "terminals"



B9100063
Carrying strap, textile lanyard
black
860mm

MINITEC

Accessory



B9100063
Carrying strap, textile lanyard
black
860mm



B9100073
Carrying strap, textile lanyard
black
914x16mm

Subject to technical modification without notice. © by OKW Gehäusesysteme, Buchen/Germany.