

EURO CONTENITORI

Contenitori per applicazioni mobili di grandi dimensioni

Gli EURO CONTENITORI offrono il massimo di praticità di montaggio: senza nemmeno una vite, i gusci del contenitore, i listelli e le parti laterali si innestano tra loro in modo sicuro con la semplice pressione.

- Impiego versatile per applicazioni desk e mobili
- Grandi superfici per elementi di comando e interfacce
- 2 larghezze standard 42 TE e 63 TE
- 4 altezze standard 1 HE, 2 HE, 3 HE, 6 HE; parti laterali impiegabili a scelta e abbinabili tra loro con 3 unità di altezza (0,5 HE, 1 HE e 2 HE) consentono ulteriori varianti di contenitore a seconda dei requisiti spaziali
- Nervature di rinforzo stampate a iniezione rendono questi contenitori pratici e leggeri particolarmente stabili e resistenti alle deformazioni
- Posizione obliqua ergonomica grazie ai piedini orientabili o staffa stabile impiegabile anche come maniglia
- I listelli con fessure di ventilazione risolvono i problemi di presa d'aria
- Montaggio facilissimo grazie alla speciale chiusura a scatto OKW
- Placche frontali e posteriori in alluminio, facili da inserire
- La possibilità di scegliere listelli o parti laterali del contenitore, per es. nei colori aziendali, consente la creazione di prodotti perfettamente abbinati all'immagine aziendale
- Grado di protezione IP 40
- Punti di fissaggio per schede e componenti di montaggio
- Piedini in gomma per stabilità e sicurezza compresi tra gli elementi forniti



EURO CONTENITORI

Esempi di applicazione

Periferiche di computer, modem e interfacce, tecnica di rete. Comandi dei processi, dispositivi medicali elettrici, rilevamento di dati, metrologia e tecnica di regolazione, ecc.



Light therapy device

Modifiche specifiche del cliente

Che caratteristiche deve avere il vostro prodotto personalizzato? Su richiesta vi forniamo i contenitori e manopole pronti per il montaggio e con tutte le modifiche e le caratteristiche specifiche.

Opzioni prodotto per Euro contenitori



Lavorazione
meccanica



Verniciatura



Stampa



Marcatura laser



Materiale speciale



Protezione CEM



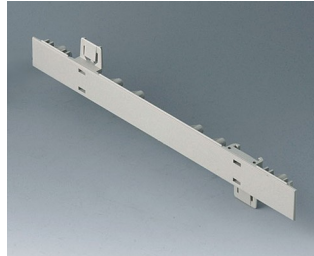
Confezionamento /
montaggio

EURO CONTENITORI

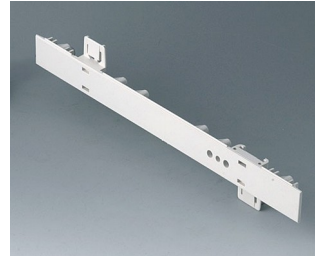
Versioni



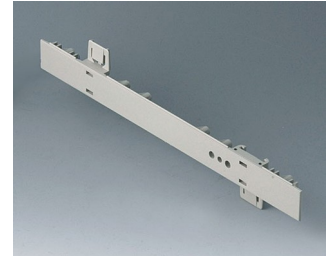
A0105270
Side panel 0.5 HE
ABS (UL 94 HB)
off-white RAL 9002
250x22,25mm



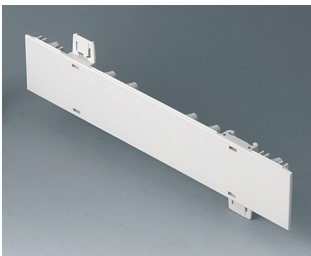
A0105280
Side panel 0.5 HE
ABS (UL 94 HB)
pebble grey RAL 7032
250x22,25mm



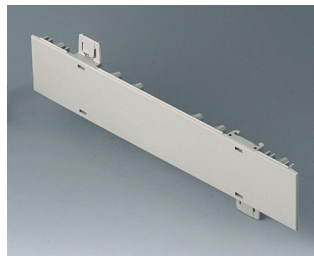
A0106270
Side panel 0.5 HE, for handle
mounting
ABS (UL 94 HB)
off-white RAL 9002
250x22,25mm



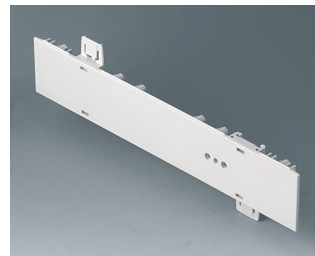
A0106280
Side panel 0.5 HE, for handle
mounting
ABS (UL 94 HB)
pebble grey RAL 7032
250x22,25mm



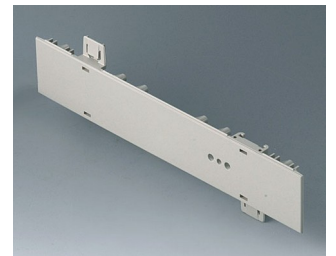
A0110270
Side panel 1 HE
ABS (UL 94 HB)
off-white RAL 9002
250x44,45mm



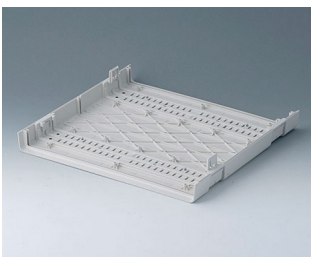
A0110280
Side panel 1 HE
ABS (UL 94 HB)
pebble grey RAL 7032
250x44,45mm



A0111270
Side panel 1 HE, for handle
mounting
ABS (UL 94 HB)
off-white RAL 9002
250x44,45mm



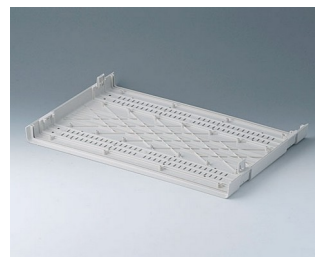
A0111280
Side panel 1 HE, for handle
mounting
ABS (UL 94 HB)
pebble grey RAL 7032
250x44,45mm



A0114170
Shell 42 TE
ABS (UL 94 HB)
off-white RAL 9002
260x250x27mm



A0114370
Snap-in panel, without slots
ABS (UL 94 HB)
off-white RAL 9002



A0116170
Shell 63 TE
ABS (UL 94 HB)
off-white RAL 9002
367x250x27mm



A0116370
Snap-in panel, without slots
ABS (UL 94 HB)
off-white RAL 9002

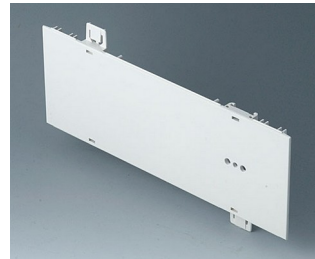
EURO CONTENITORI



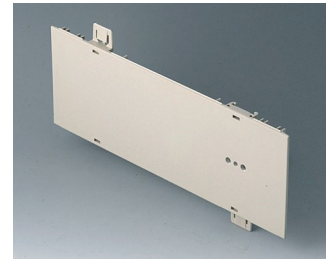
A0120270
Side panel 2 HE
ABS (UL 94 HB)
off-white RAL 9002
250x88,9mm



A0120280
Side panel 2 HE
ABS (UL 94 HB)
pebble grey RAL 7032
250x88,9mm



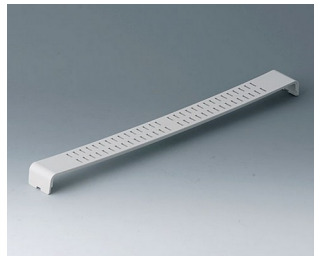
A0121270
Side panel 2 HE, for handle
mounting
ABS (UL 94 HB)
off-white RAL 9002
250x88,9mm



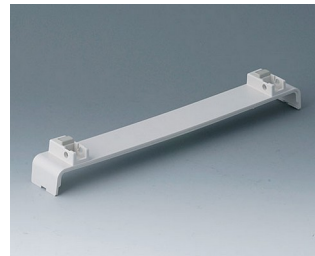
A0121280
Side panel 2 HE, for handle
mounting
ABS (UL 94 HB)
pebble grey RAL 7032
250x88,9mm



A0124370
Snap-in panel, with slots
ABS (UL 94 HB)
off-white RAL 9002



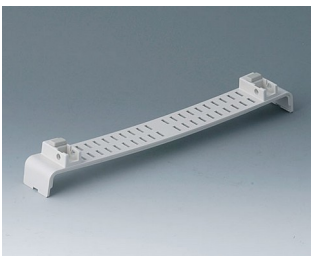
A0126370
Snap-in panel, with slots
ABS (UL 94 HB)
off-white RAL 9002



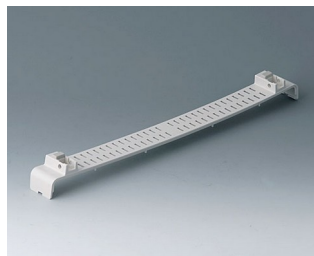
A0134370
Snap-in panel, without slots, with
feet
ABS (UL 94 HB)
off-white RAL 9002



A0136370
Snap-in panel, without slots, with
feet
ABS (UL 94 HB)
off-white RAL 9002



A0144370
Snap-in panel with, slots, with
feet
ABS (UL 94 HB)
off-white RAL 9002



A0146370
Snap-in panel, with slots, with
feet
ABS (UL 94 HB)
off-white RAL 9002



A0214070
EURO CASE 42 TE, without
handle
ABS (UL 94 HB)
off-white RAL 9002
260x250x54mm



A0214170
EURO CASE 42 TE, without
handle
ABS (UL 94 HB)
off-white RAL 9002
260x250x54mm



A0214270
EURO CASE 42 TE, without
handle
ABS (UL 94 HB)
off-white RAL 9002
260x250x54mm



A0216070
EURO CASE 63 TE, without
handle
ABS (UL 94 HB)
off-white RAL 9002
367x250x54mm



A0216170
EURO CASE 63 TE, without
handle
ABS (UL 94 HB)
off-white RAL 9002
367x250x54mm



A0216270
EURO CASE 63 TE, without
handle
ABS (UL 94 HB)
off-white RAL 9002
367x250x54mm

EURO CONTENITORI



A0224070
EURO CASE 42 TE, without handle
ABS (UL 94 HB)
off-white RAL 9002
260x250x98,5mm



A0224170
EURO CASE 42 TE, without handle
ABS (UL 94 HB)
off-white RAL 9002
260x250x98,5mm



A0224270
EURO CASE 42 TE, without handle
ABS (UL 94 HB)
off-white RAL 9002
260x250x98,5mm



A0224470
EURO CASE 42 TE, with handle
ABS (UL 94 HB)
off-white RAL 9002
260x250x98,5mm



A0224570
EURO CASE 42 TE, with handle
ABS (UL 94 HB)
off-white RAL 9002
260x250x98,5mm



A0224670
EURO CASE 42 TE, with handle
ABS (UL 94 HB)
off-white RAL 9002
260x250x98,5mm



A0226070
EURO CASE 63 TE, without handle
ABS (UL 94 HB)
off-white RAL 9002
367x250x98,5mm



A0226170
EURO CASE 63 TE, without handle
ABS (UL 94 HB)
off-white RAL 9002
367x250x98,5mm



A0226270
EURO CASE 63 TE, without handle
ABS (UL 94 HB)
off-white RAL 9002
367x250x98,5mm



A0226470
EURO CASE 63 TE, with handle
ABS (UL 94 HB)
off-white RAL 9002
367x250x98,5mm



A0226570
EURO CASE 63 TE, with handle
ABS (UL 94 HB)
off-white RAL 9002
367x250x98,5mm



A0226670
EURO CASE 63 TE, with handle
ABS (UL 94 HB)
off-white RAL 9002
367x250x98,5mm



A0234070
EURO CASE 42 TE, without handle
ABS (UL 94 HB)
off-white RAL 9002
260x250x143mm



A0234170
EURO CASE 42 TE, without handle
ABS (UL 94 HB)
off-white RAL 9002
260x250x143mm



A0234270
EURO CASE 42 TE, without handle
ABS (UL 94 HB)
off-white RAL 9002
260x250x143mm



A0234470
EURO CASE 42 TE, with handle
ABS (UL 94 HB)
off-white RAL 9002
260x250x143mm

EURO CONTENITORI



A0234570
EURO CASE 42 TE, with handle
ABS (UL 94 HB)
off-white RAL 9002
260x250x143mm



A0234670
EURO CASE 42 TE, with handle
ABS (UL 94 HB)
off-white RAL 9002
260x250x143mm



A0236070
EURO CASE 63 TE, without
handle
ABS (UL 94 HB)
off-white RAL 9002
367x250x143mm



A0236170
EURO CASE 63 TE, without
handle
ABS (UL 94 HB)
off-white RAL 9002
367x250x143mm



A0236270
EURO CASE 63 TE, without
handle
ABS (UL 94 HB)
off-white RAL 9002
367x250x143mm



A0236470
EURO CASE 63 TE, with handle
ABS (UL 94 HB)
off-white RAL 9002
367x250x143mm



A0236570
EURO CASE 63 TE, with handle
ABS (UL 94 HB)
off-white RAL 9002
367x250x143mm



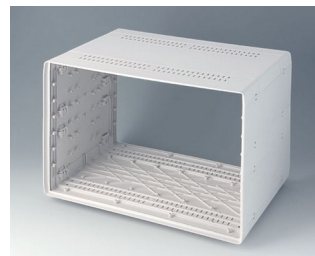
A0236670
EURO CASE 63 TE, with handle
ABS (UL 94 HB)
off-white RAL 9002
367x250x143mm



A0266070
EURO CASE 63 TE, without
handle
ABS (UL 94 HB)
off-white RAL 9002
367x250x276,5mm



A0266170
EURO CASE 63 TE, without
handle
ABS (UL 94 HB)
off-white RAL 9002
367x250x276,5mm



A0266270
EURO CASE 63 TE, without
handle
ABS (UL 94 HB)
off-white RAL 9002
367x250x276,5mm



A0344216
Handle 42 TE
PA 6
off-white RAL 9002



A0344217
Handle 42 TE
PA 6
off-white RAL 9002



A0344218
Handle 42 TE
PA 6
pebble grey RAL 7032



A0346316
Handle 63 TE
PA 6
off-white RAL 9002



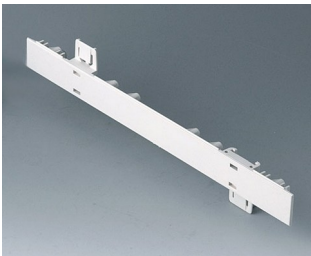
A0346317
Handle 63 TE
PA 6
off-white RAL 9002

EURO CONTENITORI

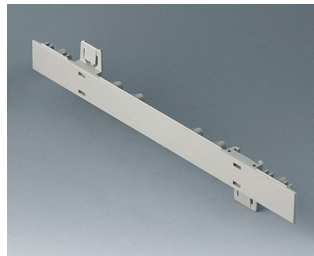


A0346318
 Handle 63 TE
 PA 6
 pebble grey RAL 7032

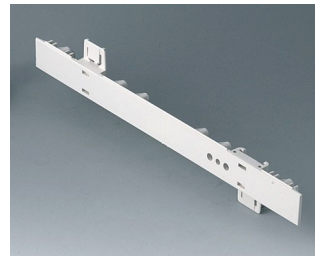
System components to complete



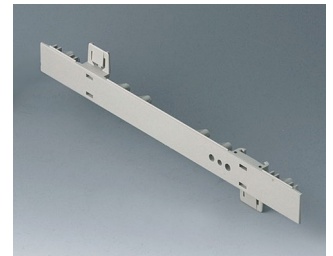
A0105270
 Side panel 0.5 HE
 ABS (UL 94 HB)
 off-white RAL 9002
 250x22,25mm



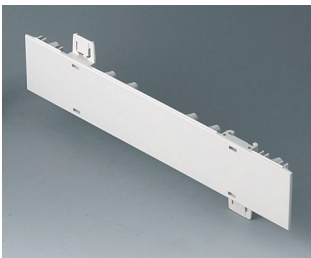
A0105280
 Side panel 0.5 HE
 ABS (UL 94 HB)
 pebble grey RAL 7032
 250x22,25mm



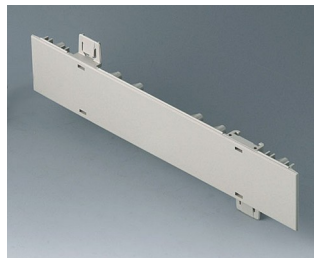
A0106270
 Side panel 0.5 HE, for handle mounting
 ABS (UL 94 HB)
 off-white RAL 9002
 250x22,25mm



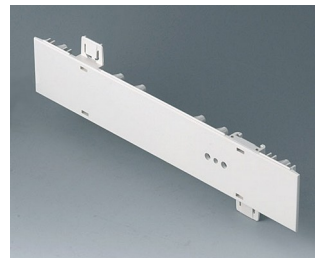
A0106280
 Side panel 0.5 HE, for handle mounting
 ABS (UL 94 HB)
 pebble grey RAL 7032
 250x22,25mm



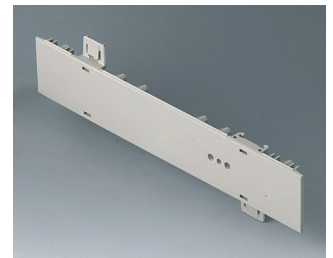
A0110270
 Side panel 1 HE
 ABS (UL 94 HB)
 off-white RAL 9002
 250x44,45mm



A0110280
 Side panel 1 HE
 ABS (UL 94 HB)
 pebble grey RAL 7032
 250x44,45mm



A0111270
 Side panel 1 HE, for handle mounting
 ABS (UL 94 HB)
 off-white RAL 9002
 250x44,45mm



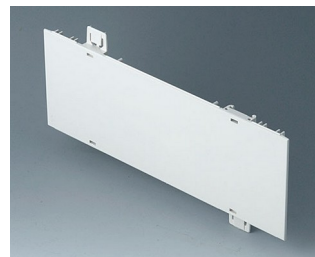
A0111280
 Side panel 1 HE, for handle mounting
 ABS (UL 94 HB)
 pebble grey RAL 7032
 250x44,45mm



A0114370
 Snap-in panel, without slots
 ABS (UL 94 HB)
 off-white RAL 9002



A0116370
 Snap-in panel, without slots
 ABS (UL 94 HB)
 off-white RAL 9002

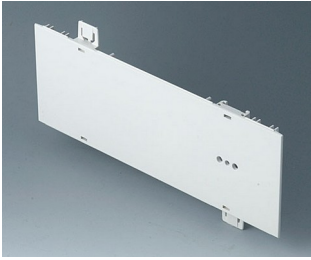


A0120270
 Side panel 2 HE
 ABS (UL 94 HB)
 off-white RAL 9002
 250x88,9mm



A0120280
 Side panel 2 HE
 ABS (UL 94 HB)
 pebble grey RAL 7032
 250x88,9mm

EURO CONTENITORI



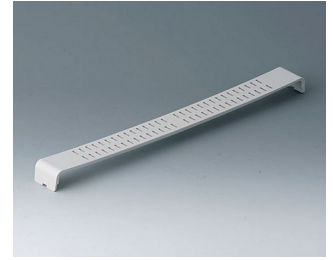
A0121270
 Side panel 2 HE, for handle mounting
 ABS (UL 94 HB)
 off-white RAL 9002
 250x88,9mm



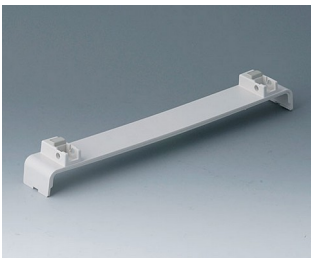
A0121280
 Side panel 2 HE, for handle mounting
 ABS (UL 94 HB)
 pebble grey RAL 7032
 250x88,9mm



A0124370
 Snap-in panel, with slots
 ABS (UL 94 HB)
 off-white RAL 9002



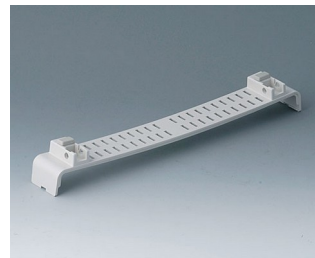
A0126370
 Snap-in panel, with slots
 ABS (UL 94 HB)
 off-white RAL 9002



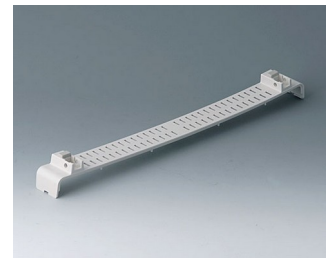
A0134370
 Snap-in panel, without slots, with feet
 ABS (UL 94 HB)
 off-white RAL 9002



A0136370
 Snap-in panel, without slots, with feet
 ABS (UL 94 HB)
 off-white RAL 9002



A0144370
 Snap-in panel with slots, with feet
 ABS (UL 94 HB)
 off-white RAL 9002



A0146370
 Snap-in panel, with slots, with feet
 ABS (UL 94 HB)
 off-white RAL 9002



A0344216
 Handle 42 TE
 PA 6
 off-white RAL 9002



A0344217
 Handle 42 TE
 PA 6
 off-white RAL 9002



A0344218
 Handle 42 TE
 PA 6
 pebble grey RAL 7032



A0346316
 Handle 63 TE
 PA 6
 off-white RAL 9002



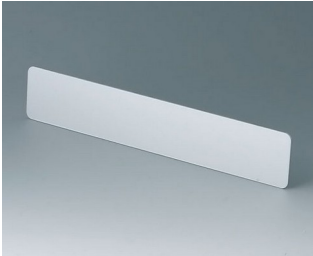
A0346317
 Handle 63 TE
 PA 6
 off-white RAL 9002



A0346318
 Handle 63 TE
 PA 6
 pebble grey RAL 7032

EURO CONTENITORI

Accessory to complete



A0314270
Front / rear panel 42 TE 1 HE
Aluminium
matt anodised
250,8x46,3x2mm



A0316370
Front / rear panel 63 TE 1 HE
Aluminium
matt anodised
357,8x46,3x2mm



A0324270
Front / rear panel 42 TE 2 HE
Aluminium
matt anodised
250,8x90,7x2mm



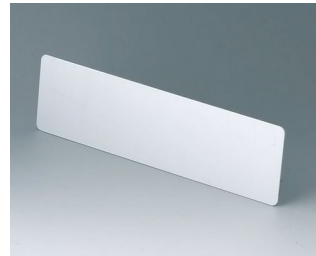
A0326370
Front / rear panel 63 TE 2 HE
Aluminium
matt anodised
357,8x90,7x2mm



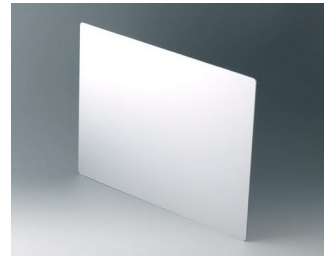
A0334270
Front / rear panel 42 TE 3 HE
Aluminium
matt anodised
250,8x135,2x2mm



A0336370
Front / rear panel 63 TE 3 HE
Aluminium
matt anodised
357,8x135,2x2mm



A0354270
Front / rear panel 42 TE 1.5 HE
Aluminium
matt anodised
250,8x68,5x2mm



A0366370
Front / rear panel 63 TE 6 HE
Aluminium
matt anodised
268,6x357,8x2mm

Accessory "screws"



A0306031
Self-tapping screws 3 x 6 mm
(PZ1)



A0308031
Self-tapping screws 3 x 8 mm
(PZ1)



A0308132
Self-tapping screw 3 x 8 mm
(T10)
Stainless steel

Accessory



A0350007
Tilt foot
ABS (UL 94 HB)
off-white RAL 9002

EURO CONTENITORI

Salvo modifiche tecniche. © OKW Gehäusesysteme, Buchen/Germania.