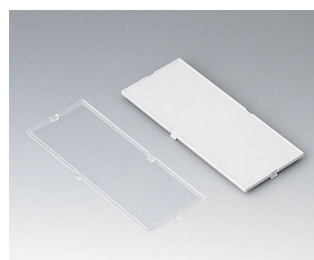
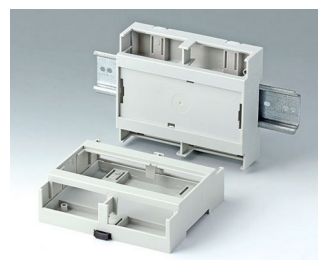
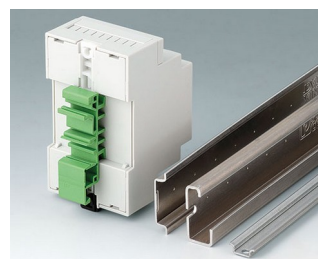
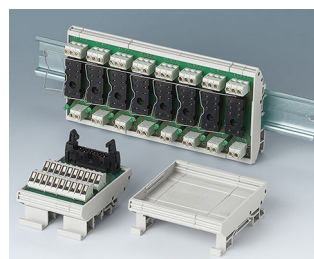
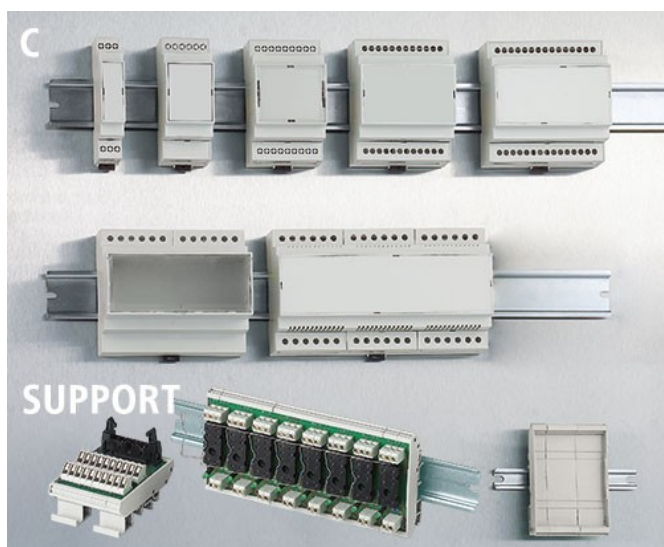


# RAILTEC C

## Contenitori modulari per guida DIN e supporti modulari

L'ampio programma di contenitori per guida DIN EN 60715 e per il montaggio diretto alla parete. Il programma comprende inoltre supporti modulari per un montaggio personalizzato e maggiore flessibilità con una sostituzione facile delle interfacce.

- Tutti i tipi offrono un elevato grado di flessibilità di montaggio dei componenti e delle operazioni di collegamento
  - Eccezionali proprietà del materiale per notevoli sollecitazioni e un'elevata resistenza termica (UL 94 V-0)
  - Montaggio mediante semplice innesto delle parti del contenitore
  - **RAILTEC C:** per morsetti per circuiti stampati, connettori a pin e connettori frontali; telaio opzionale per ulteriori posizioni del circuito stampato; diverse versioni di placca frontale e copertura frontale; 1-12 larghezze di modulo; per guide DIN EN 60715 TH35; posizionamento dei circuiti stampati in tutte e 3 le direzioni spaziali; adattatore per TH15 e G32 (1-4 moduli) come accessorio
- Versione I Fronte aperto, lato collegamenti liberamente accessibile, senza fessure di ventilazione
- Versione II Fronte aperto, lato collegamenti liberamente accessibile, con fessure di ventilazione
- Versione III Fronte aperto, lato collegamenti con parete contenitore allungata, senza fessure di ventilazione
- Versione IV Fronte chiuso, lato collegamenti liberamente accessibile, senza fessure di ventilazione
- **RAILTEC SUPPORT:** supporti modulari per un montaggio personalizzato dei componenti; per guide DIN EN 60715 TH35, TH15 e G32
  - Grado di protezione IP 40



# RAILTEC C

## Modifiche specifiche del cliente

Che caratteristiche deve avere il vostro prodotto personalizzato? Su richiesta vi forniamo i contenitori e manopole pronti per il montaggio e con tutte le modifiche e le caratteristiche specifiche.

Opzioni prodotto per Railtec C



Lavorazione  
meccanica



Verniciatura



Stampa



Marcatura laser



Pellicole decorative



Confezionamento /  
montaggio

## Versioni



**B6700100**  
RAILTEC C, 1 module, Vers. I  
PC (UL 94 V-0)  
light grey  
17,5x90x58mm



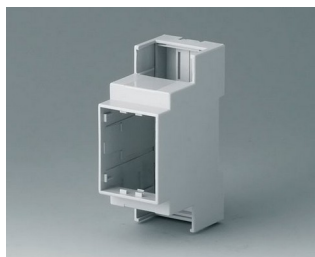
**B6700102**  
RAILTEC C, 1 module, Vers. II  
PC (UL 94 V-0)  
light grey  
17,5x90x58mm



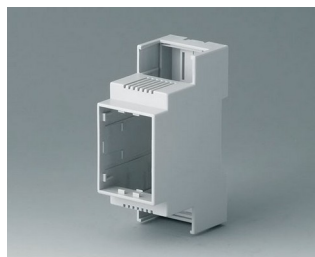
**B6700104**  
RAILTEC C, 1 module, Vers. III  
PC (UL 94 V-0)  
light grey  
17,5x90x58mm



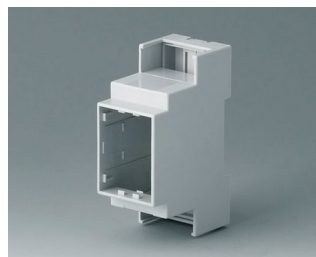
**B6700106**  
RAILTEC C, 1 module, Vers. IV  
PC (UL 94 V-0)  
light grey  
17,5x90x58mm



**B6701100**  
RAILTEC C, 2 modules, Vers. I  
PC (UL 94 V-0)  
light grey  
36x90x58mm



**B6701102**  
RAILTEC C, 2 modules, Vers. II  
PC (UL 94 V-0)  
light grey  
36x90x58mm



**B6701104**  
RAILTEC C, 2 modules, Vers. III  
PC (UL 94 V-0)  
light grey  
36x90x58mm



**B6701106**  
RAILTEC C, 2 modules, Vers. IV  
PC (UL 94 V-0)  
light grey  
36x90x58mm

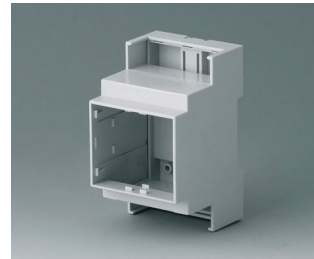
# RAILTEC C



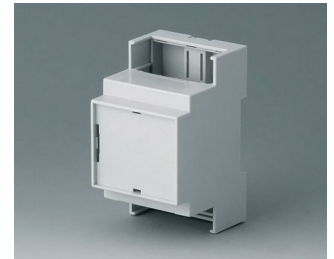
**B6702100**  
RAILTEC C, 3 modules, Vers. I  
PC (UL 94 V-0)  
light grey  
53x90x58mm



**B6702102**  
RAILTEC C, 3 modules, Vers. II  
PC (UL 94 V-0)  
light grey  
53x90x58mm



**B6702104**  
RAILTEC C, 3 modules, Vers. III  
PC (UL 94 V-0)  
light grey  
53x90x58mm



**B6702106**  
RAILTEC C, 3 modules, Vers. IV  
PC (UL 94 V-0)  
light grey  
53x90x58mm



**B6703100**  
RAILTEC C, 4 modules, Vers. I  
PC (UL 94 V-0)  
light grey  
71x90x58mm



**B6703102**  
RAILTEC C, 4 modules, Vers. II  
PC (UL 94 V-0)  
light grey  
71x90x58mm



**B6703104**  
RAILTEC C, 4 modules, Vers. III  
PC (UL 94 V-0)  
light grey  
71x90x58mm



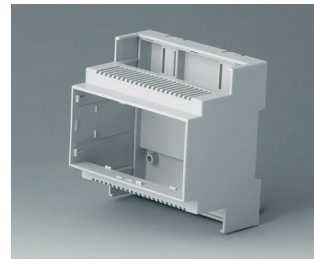
**B6703106**  
RAILTEC C, 4 modules, Vers. IV  
PC (UL 94 V-0)  
light grey  
71x90x58mm



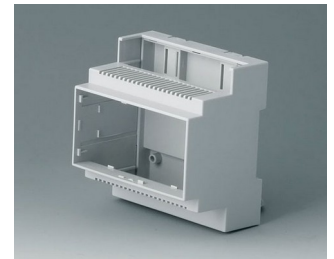
**B6704100**  
RAILTEC C, 5 modules, Vers. I  
PC (UL 94 V-0)  
light grey  
88x90x58mm



**B6704101**  
RAILTEC C, 5 modules, Vers. I  
PC (UL 94 V-0)  
light grey  
88x90x58mm



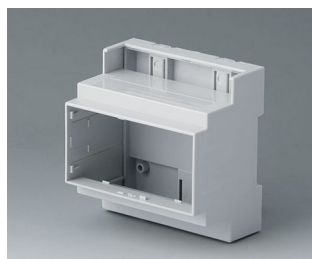
**B6704102**  
RAILTEC C, 5 modules, Vers. II  
PC (UL 94 V-0)  
light grey  
88x90x58mm



**B6704103**  
RAILTEC C, 5 modules, Vers. II  
PC (UL 94 V-0)  
light grey  
88x90x58mm



**B6704104**  
RAILTEC C, 5 modules, Vers. III  
PC (UL 94 V-0)  
light grey  
88x90x58mm



**B6704105**  
RAILTEC C, 5 modules, Vers. III  
PC (UL 94 V-0)  
light grey  
88x90x58mm



**B6704106**  
RAILTEC C, 5 modules, Vers. IV  
PC (UL 94 V-0)  
light grey  
88x90x58mm



**B6704107**  
RAILTEC C, 5 modules, Vers. IV  
PC (UL 94 V-0)  
light grey  
88x90x58mm

# RAILTEC C



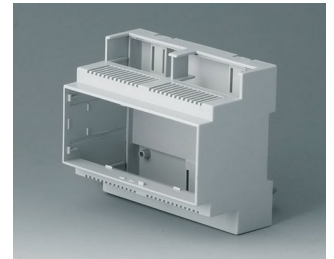
**B6705100**  
RAILTEC C, 6 modules, Vers. I  
PC (UL 94 V-0)  
light grey  
106x90x58mm



**B6705101**  
RAILTEC C, 6 modules, Vers. I  
PC (UL 94 V-0)  
light grey  
106x90x58mm



**B6705102**  
RAILTEC C, 6 modules, Vers. II  
PC (UL 94 V-0)  
light grey  
106x90x58mm



**B6705103**  
RAILTEC C, 6 modules, Vers. II  
PC (UL 94 V-0)  
light grey  
106x90x58mm



**B6705104**  
RAILTEC C, 6 modules, Vers. III  
PC (UL 94 V-0)  
light grey  
106x90x58mm



**B6705105**  
RAILTEC C, 6 modules, Vers. III  
PC (UL 94 V-0)  
light grey  
106x90x58mm



**B6705106**  
RAILTEC C, 6 modules, Vers. IV  
PC (UL 94 V-0)  
light grey  
106x90x58mm



**B6705107**  
RAILTEC C, 6 modules, Vers. IV  
PC (UL 94 V-0)  
light grey  
106x90x58mm



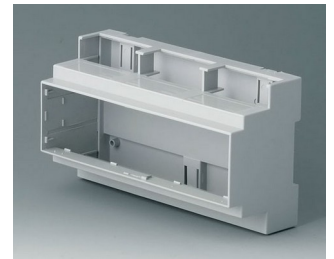
**B6705800**  
RAILTEC C, 6 modules, flat,  
Vers. I  
PC (UL 94 V-0)  
light grey  
106,2x90x32mm



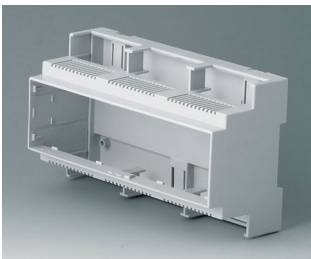
**B6705806**  
RAILTEC C, 6 modules, flat,  
Vers. IV  
PC (UL 94 V-0)  
light grey  
106,2x90x32mm



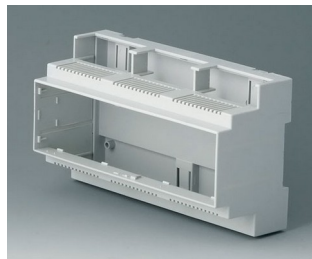
**B6706100**  
RAILTEC C, 9 modules, Vers. I  
PC (UL 94 V-0)  
light grey  
160x90x58mm



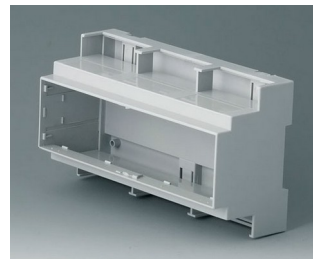
**B6706101**  
RAILTEC C, 9 modules, Vers. I  
PC (UL 94 V-0)  
light grey  
160x90x58mm



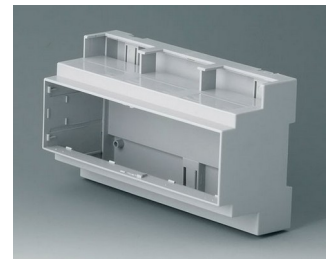
**B6706102**  
RAILTEC C, 9 modules, Vers. II  
PC (UL 94 V-0)  
light grey  
160x90x58mm



**B6706103**  
RAILTEC C, 9 modules, Vers. II  
PC (UL 94 V-0)  
light grey  
160x90x58mm



**B6706104**  
RAILTEC C, 9 modules, Vers. III  
PC (UL 94 V-0)  
light grey  
160x90x58mm

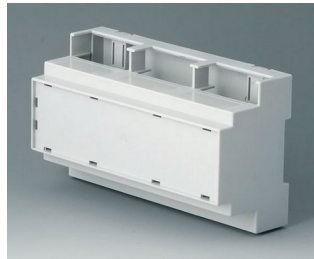


**B6706105**  
RAILTEC C, 9 modules, Vers. III  
PC (UL 94 V-0)  
light grey  
160x90x58mm

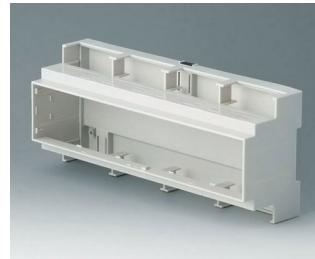
# RAILTEC C



**B6706106**  
RAILTEC C, 9 modules, Vers. IV  
PC (UL 94 V-0)  
light grey  
160x90x58mm



**B6706107**  
RAILTEC C, 9 modules, Vers. IV  
PC (UL 94 V-0)  
light grey  
160x90x58mm



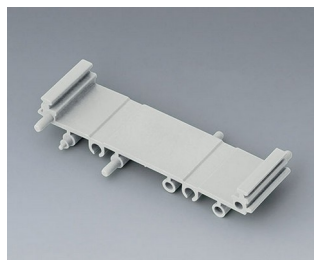
**B6707100**  
RAILTEC C, 12 modules, Vers. I  
PC (UL 94 V-0)  
light grey  
210x90x58mm



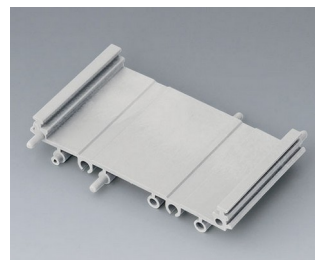
**B6707102**  
RAILTEC C, 12 modules, Vers. II  
PC (UL 94 V-0)  
light grey  
210x90x58mm



**B6724330**  
RAILTEC SUP. 72, intermediate  
part  
PA 6 (30) (UL 94 V-0)  
light grey  
82x11,25x16mm



**B6724331**  
RAILTEC SUP. 72, intermediate  
part  
PA 6 (30) (UL 94 V-0)  
light grey  
82x22,5x16mm



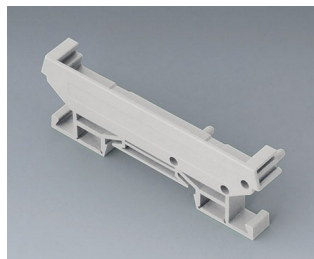
**B6724332**  
RAILTEC SUP. 72, intermediate  
part  
PA 6 (30) (UL 94 V-0)  
light grey  
82x45x16mm



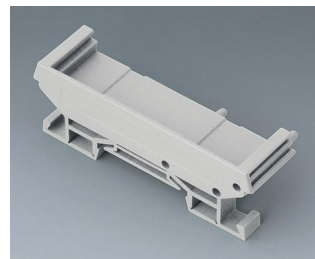
**B6724333**  
RAILTEC SUP. 72, end section  
PA 6 (30) (UL 94 V-0)  
light grey  
82x11,2x16mm



**B6724334**  
RAILTEC SUP. 72, end section  
PA 6 (30) (UL 94 V-0)  
light grey  
82x22,2x16mm



**B6724335**  
RAILTEC SUP. 72, end section  
with foot  
PA 6 (30) (UL 94 V-0)  
light grey  
82x11,2x22,5mm



**B6724336**  
RAILTEC SUP. 72, end section  
with foot  
PA 6 (30) (UL 94 V-0)  
light grey  
82x22,2x22,5mm



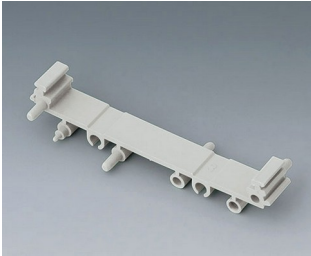
**B6724444**  
RAILTEC SUP. 107, end section  
PA 6 (30) (UL 94 V-0)  
light grey  
118x11,5x17,5mm



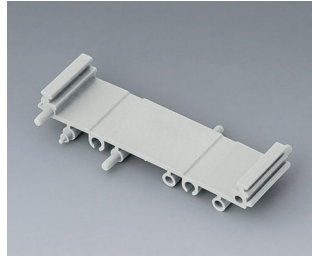
**B6724445**  
RAILTEC SUP. 107, end section  
with foot  
PA 6 (30) (UL 94 V-0)  
light grey  
118x11,5x27,5mm

# RAILTEC C

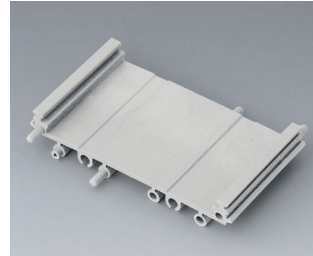
## System components to complete



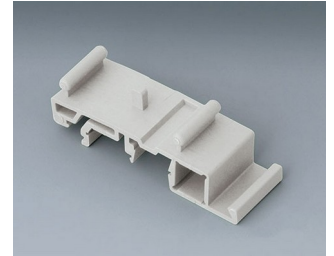
**B6724330**  
RAILTEC SUP. 72, intermediate part  
PA 6 (30) (UL 94 V-0)  
light grey  
82x11,25x16mm



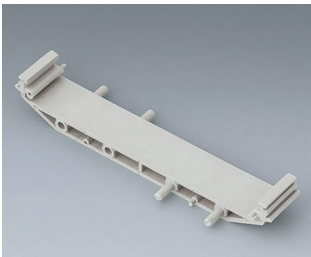
**B6724331**  
RAILTEC SUP. 72, intermediate part  
PA 6 (30) (UL 94 V-0)  
light grey  
82x22,5x16mm



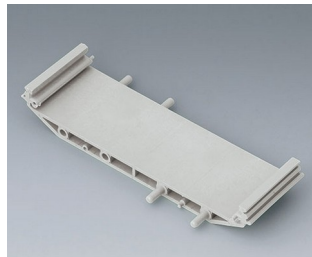
**B6724332**  
RAILTEC SUP. 72, intermediate part  
PA 6 (30) (UL 94 V-0)  
light grey  
82x45x16mm



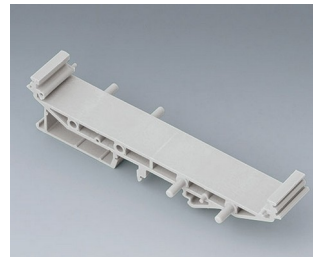
**B6724337**  
RAILTEC SUP. 72, foot  
PA 6 (30) (UL 94 V-0)  
light grey



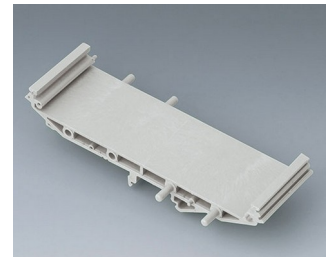
**B6724440**  
RAILTEC SUP. 107, intermediate part  
PA 6 (30) (UL 94 V-0)  
light grey  
118x18,5x17,5mm



**B6724441**  
RAILTEC SUP. 107, intermediate part  
PA 6 (30) (UL 94 V-0)  
light grey  
118x35x17,5mm

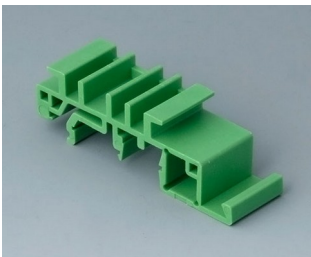


**B6724442**  
RAILTEC SUP. 107, intermediate p. + foot  
PA 6 (30) (UL 94 V-0)  
light grey  
118x18,5x27,5mm



**B6724443**  
RAILTEC SUP. 107, intermediate p. + foot  
PA 6 (30) (UL 94 V-0)  
light grey  
118x35x27,5mm

## Accessory "wall/holder"



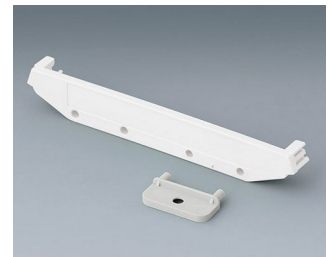
**B6811542**  
Adapter  
PA 6 (UL 94 V-0)  
green



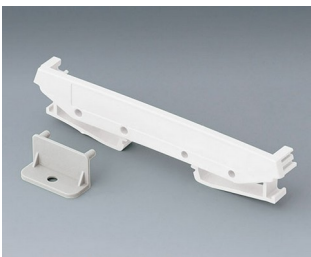
**B6824532**  
Wall suspension element for SUP. 72  
PA 6 (30) (UL 94 V-0)  
light grey



**B6824533**  
Wall suspension element with foot, SUP.  
PA 6 (30) (UL 94 V-0)  
light grey



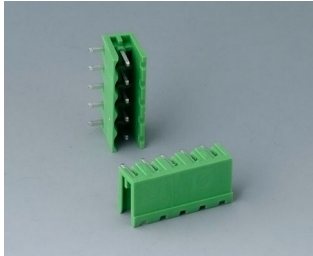
**B6824542**  
Wall suspension element for SUP. 107  
PA 6 (30) (UL 94 V-0)  
light grey



**B6824543**  
Wall suspension element with foot, SUP.  
PA 6 (30) (UL 94 V-0)  
light grey

# RAILTEC C

## Accessory "terminals"



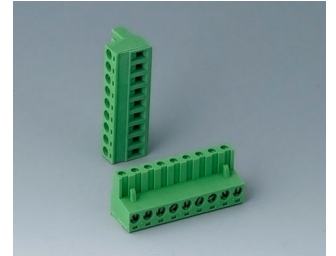
**B6601222**  
 Plug header, block 5.08  
 PA 6 (UL 94 V-0)



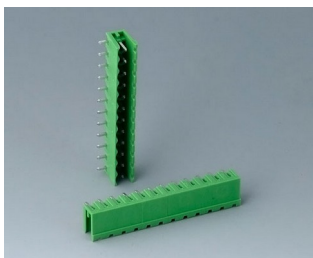
**B6601223**  
 Plug header, block 5.08  
 PA 6 (UL 94 V-0)



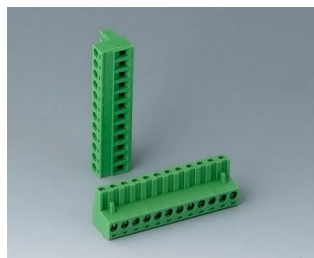
**B6602222**  
 Plug header, block 5.08  
 PA 6 (UL 94 V-0)



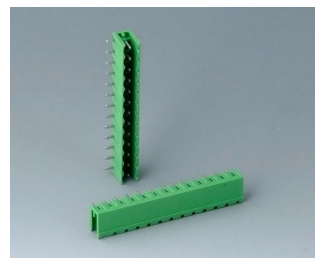
**B6602223**  
 Plug header, block 5.08  
 PA 6 (UL 94 V-0)



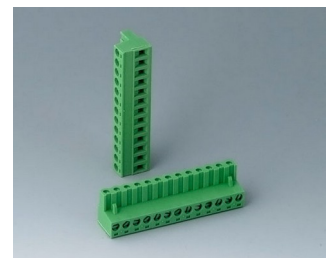
**B6603222**  
 Plug header, block 5.08  
 PA 6 (UL 94 V-0)



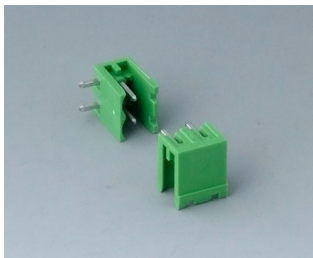
**B6603223**  
 Plug header, block 5.08  
 PA 6 (UL 94 V-0)



**B6605222**  
 Plug header, block 5.08  
 PA 6 (UL 94 V-0)



**B6605223**  
 Plug header, block 5.08  
 PA 6 (UL 94 V-0)



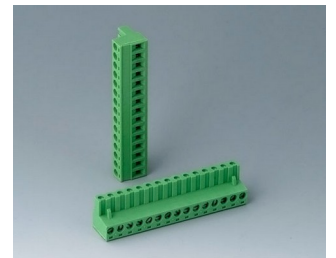
**B6606222**  
 Plug header, block 5.08  
 PA 6 (UL 94 V-0)



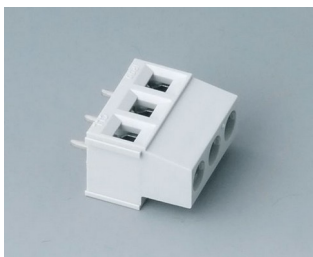
**B6606223**  
 Plug header, block 5.08  
 PA 6 (UL 94 V-0)



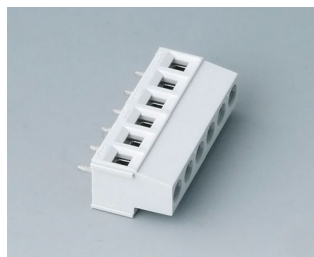
**B6607222**  
 Plug header, block 5.08  
 PA 6 (UL 94 V-0)



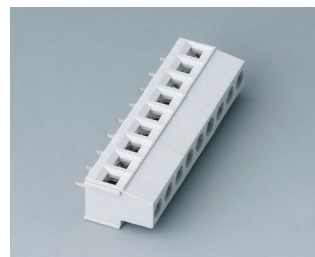
**B6607223**  
 Plug header, block 5.08  
 PA 6 (UL 94 V-0)



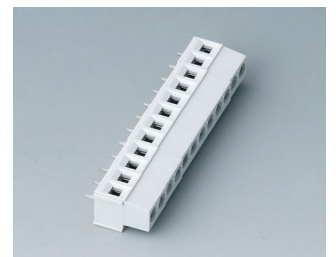
**B6800650**  
 Terminal block, block 5.08  
 PA 68 (UL 94 V-0)  
 light grey



**B6801650**  
 Terminal block, block 5.08  
 PA 68 (UL 94 V-0)  
 light grey

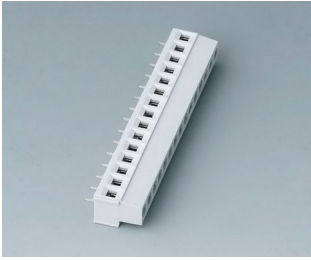


**B6802650**  
 Terminal block, block 5.08  
 PA 68 (UL 94 V-0)  
 light grey



**B6803650**  
 Terminal block, block 5.08  
 PA 68 (UL 94 V-0)  
 light grey

# RAILTEC C

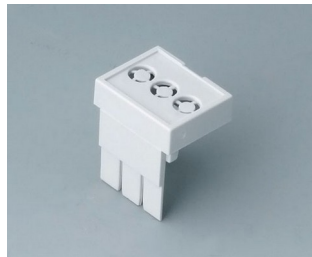


**B6804650**  
Terminal block, block 5.08  
PA 68 (UL 94 V-0)  
light grey

## Accessory "terminal guards"



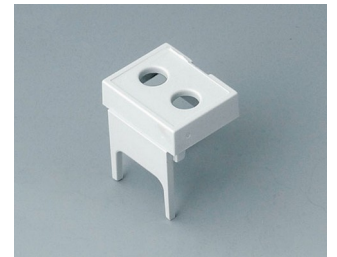
**B6800111**  
Terminal guards, closed  
PC (UL 94 V-0)  
light grey



**B6800112**  
Terminal guards, perforated,  
5.08  
PC (UL 94 V-0)  
light grey



**B6800113**  
Terminal guards, with holes, 5.08  
PC (UL 94 V-0)  
light grey



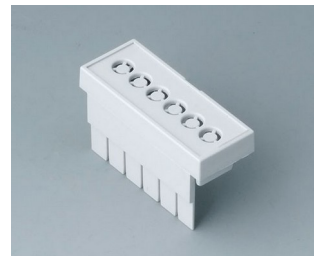
**B6800114**  
Terminal guards, with holes, 7.5  
& 7.62  
PC (UL 94 V-0)  
light grey



**B6800115**  
Terminal guards, with holes,  
10.16  
PC (UL 94 V-0)  
light grey



**B6801111**  
Terminal guards, closed  
PC (UL 94 V-0)  
light grey



**B6801112**  
Terminal guards, perforated,  
5.08  
PC (UL 94 V-0)  
light grey



**B6801113**  
Terminal guards, with holes, 5.08  
PC (UL 94 V-0)  
light grey



**B6801114**  
Terminal guards, with holes, 7.5  
& 7.62  
PC (UL 94 V-0)  
light grey



**B6801115**  
Terminal guards, with holes,  
10.16  
PC (UL 94 V-0)  
light grey



**B6802111**  
Terminal guards, closed  
PC (UL 94 V-0)  
light grey



**B6802112**  
Terminal guards, perforated,  
5.08  
PC (UL 94 V-0)  
light grey

# RAILTEC C



**B6802113**  
 Terminal guards, with holes, 5.08  
 PC (UL 94 V-0)  
 light grey



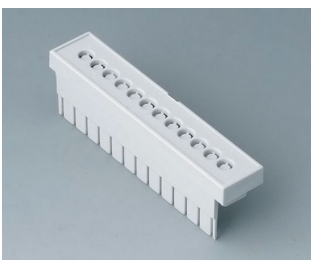
**B6802114**  
 Terminal guards, with holes, 7.5  
 & 7.62  
 PC (UL 94 V-0)  
 light grey



**B6802115**  
 Terminal guards, with holes,  
 10.16  
 PC (UL 94 V-0)  
 light grey



**B6803111**  
 Terminal guards, closed  
 PC (UL 94 V-0)  
 light grey



**B6803112**  
 Terminal guards, perforated,  
 5.08  
 PC (UL 94 V-0)  
 light grey



**B6803113**  
 Terminal guards, with holes, 5.08  
 PC (UL 94 V-0)  
 light grey



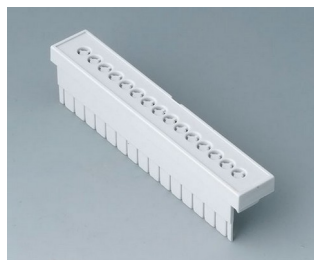
**B6803114**  
 Terminal guards, with holes, 7.5  
 & 7.62  
 PC (UL 94 V-0)  
 light grey



**B6803115**  
 Terminal guards, with holes,  
 10.16  
 PC (UL 94 V-0)  
 light grey



**B6804111**  
 Terminal guards, closed  
 PC (UL 94 V-0)  
 light grey



**B6804112**  
 Terminal guards, perforated,  
 5.08  
 PC (UL 94 V-0)  
 light grey



**B6804113**  
 Terminal guards, with holes, 5.08  
 PC (UL 94 V-0)  
 light grey



**B6804114**  
 Terminal guards, with holes, 7.5  
 & 7.62  
 PC (UL 94 V-0)  
 light grey



**B6804115**  
 Terminal guards, with holes,  
 10.16  
 PC (UL 94 V-0)  
 light grey

# RAILTEC C

## Accessory



**B6800100**  
Front panel, 1 module  
PC (UL 94 V-0)  
light grey  
14x42mm



**B6800200**  
Front panel, 1 module  
PC  
transparent  
14x42mm



**B6801100**  
Front panel, 2 modules  
PC (UL 94 V-0)  
light grey  
32x42mm



**B6801200**  
Front panel, 2 modules  
PC  
transparent  
32x42mm



**B6802100**  
Front panel, 3 modules  
PC (UL 94 V-0)  
light grey  
49x42mm



**B6802200**  
Front panel, 3 modules  
PC  
transparent  
49x42mm



**B6803100**  
Front panel, 4 modules  
PC (UL 94 V-0)  
light grey  
67x42mm



**B6803200**  
Front panel, 4 modules  
PC  
transparent  
67x42mm



**B6804100**  
Front panel, 5 modules  
PC (UL 94 V-0)  
light grey  
84x42mm



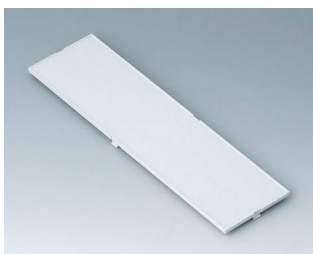
**B6804200**  
Front panel, 5 modules  
PC  
transparent  
84x42mm



**B6805100**  
Front panel, 6 modules  
PC (UL 94 V-0)  
light grey  
102x42mm



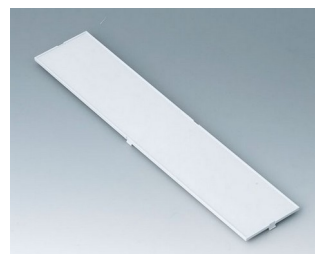
**B6805200**  
Front panel, 6 modules  
PC  
transparent  
102x42mm



**B6806100**  
Front panel, 9 modules  
PC (UL 94 V-0)  
light grey  
155x42mm



**B6806200**  
Front panel, 9 modules  
PC  
transparent  
155x42mm



**B6807100**  
Front panel, 12 modules  
PC (UL 94 V-0)  
light grey  
207,5x42mm