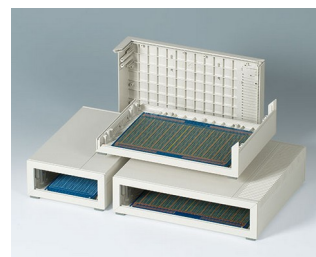
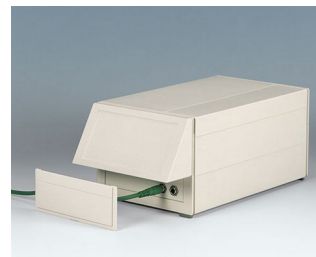
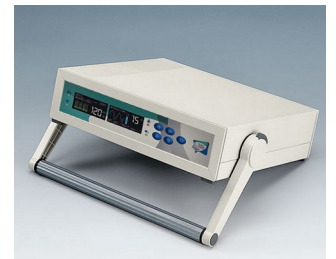
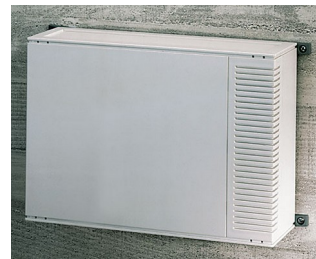
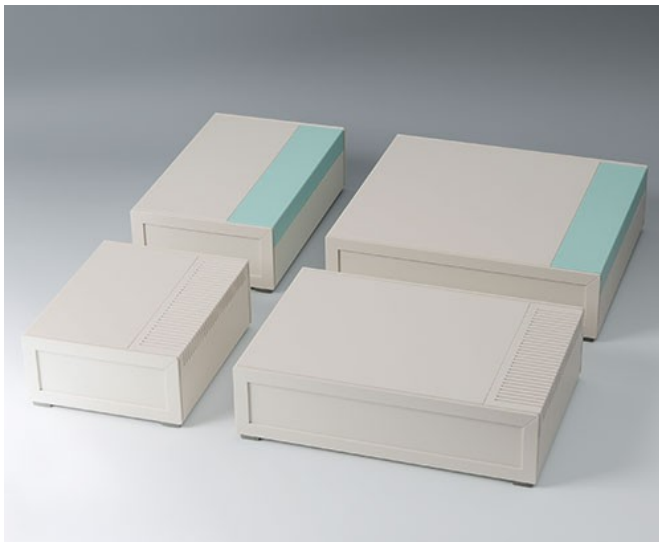


# MEDITEC

## Contenitori in plastica di grandi dimensioni

I contenitori MEDITEC sono caratterizzati da un design convincente e rappresentano la base di un sistema adeguato di contenitori di grandi dimensioni per moduli funzionali di alta qualità.

- Design elegante e funzionale
- Impiego versatile per applicazioni da scrivania, a muro e mobili
- Elevata stabilità grazie alla nervatura reticolare
- Struttura del contenitore facile da montare
- 4 misure, conformi ai formati Eurocard semplice, doppio ed esteso
- 2 altezze standard, per altezze superiori è possibile montare due parti intermedie con un raccordo
- Superficie di comando con inclinazione ergonomica; se si utilizza una parte intermedia la placca frontale chiude l'apertura in modo ottimale
- Placche frontali e posteriori in materiale plastico con uguale qualità della superficie, facili da lavorare
- Placche mobili con/senza ventilazione; a scelta nel colore del contenitore o colore verde laguna, colori personalizzati su richiesta
- Compresi piedini per una posizione sicura
- Pratico montaggio a muro con linguette di fissaggio
- Versioni con maniglia; utilizzo come maniglia di trasporto in caso di spostamenti; all'occorrenza il meccanismo di regolazione in incrementi di 30° consente all'utilizzatore una comoda angolazione sul posto
- Punti di fissaggio per schede e componenti di montaggio



# MEDITEC

## Esempi di applicazione

Tecnica medicale e di laboratorio, health care, gestione processi, metrologia e tecnica di regolazione, periferiche di computer, modem e interfacce, tecnica di comunicazione e di rete, rilevamento dei dati, ecc.



amicOx pulse oximeter



Dry milling unit for foot care



NeurOne Tesla EEG System



Pneumatic Lithotripter System

## Modifiche specifiche del cliente

Che caratteristiche deve avere il vostro prodotto personalizzato? Su richiesta vi forniamo i contenitori e manopole pronti per il montaggio e con tutte le modifiche e le caratteristiche specifiche.

Opzioni prodotto per Meditec



Lavorazione  
meccanica



Verniciatura



Stampa



Marcatura laser



Materiale speciale



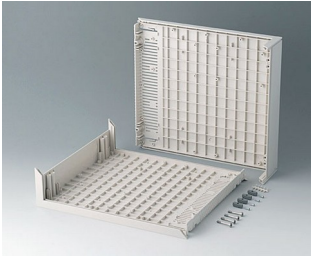
Protezione CEM



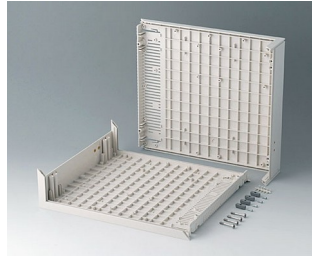
Confezionamento /  
montaggio

# MEDITEC

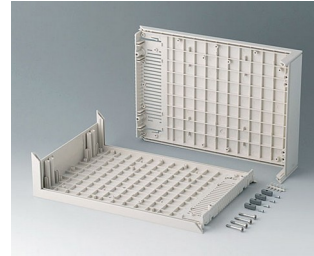
## Versioni



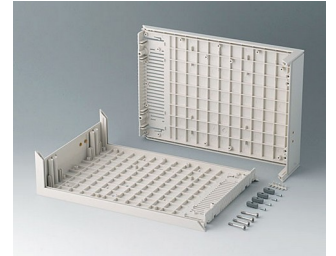
**B2010007**  
L-shells D 220, without holes  
ABS (UL 94 HB)  
off-white RAL 9002  
290x260x74mm



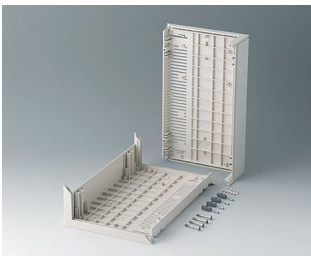
**B2010107**  
L-shells D 220, with holes for  
handle  
ABS (UL 94 HB)  
off-white RAL 9002  
290x260x74mm



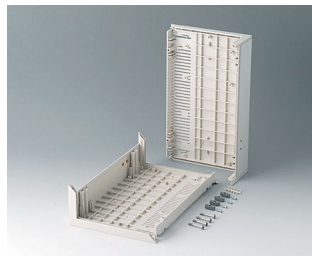
**B2011007**  
L-shells D 160, without holes  
ABS (UL 94 HB)  
off-white RAL 9002  
290x200x74mm



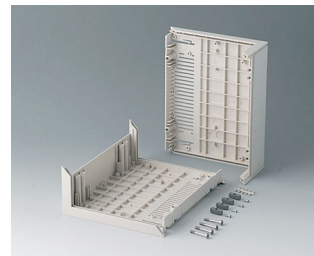
**B2011107**  
L-shells D 160, with holes for  
handle  
ABS (UL 94 HB)  
off-white RAL 9002  
290x200x74mm



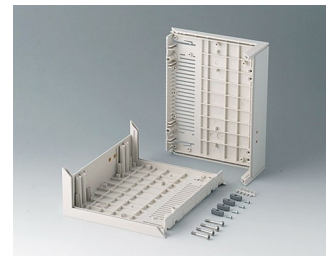
**B2012007**  
L-shells E 220, without holes  
ABS (UL 94 HB)  
off-white RAL 9002  
160x260x74mm



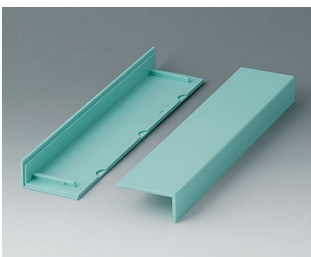
**B2012107**  
L-shells E 220, with holes for  
handle  
ABS (UL 94 HB)  
off-white RAL 9002  
160x260x74mm



**B2013007**  
L-shells E 160, without holes  
ABS (UL 94 HB)  
off-white RAL 9002  
160x200x74mm



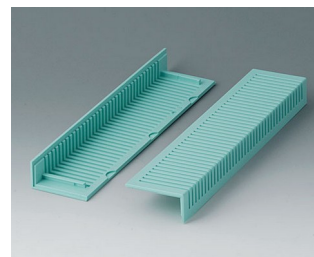
**B2013107**  
L-shells E 160, with holes for  
handle  
ABS (UL 94 HB)  
off-white RAL 9002  
160x200x74mm



**B2020005**  
Side trims 220, without  
ventilation  
ABS  
lagoon



**B2020007**  
Side trims 220, without  
ventilation  
ABS (UL 94 HB)  
off-white RAL 9002

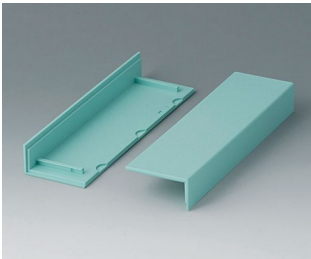


**B2021005**  
Side trims 220, with ventilation  
ABS  
lagoon

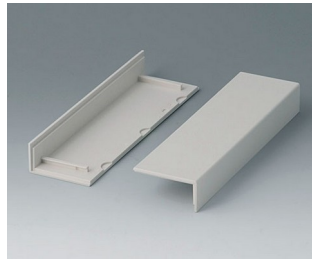


**B2021007**  
Side trims 220, with ventilation  
ABS (UL 94 HB)  
off-white RAL 9002

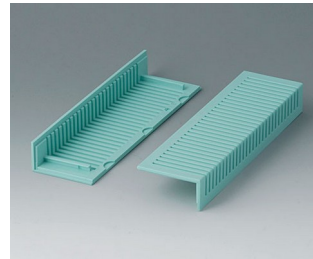
# MEDITEC



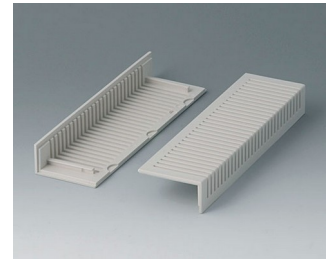
**B2022005**  
 Side trims 160, without  
 ventilation  
 ABS  
 lagoon



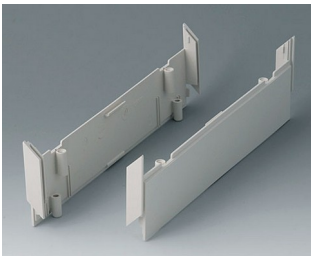
**B2022007**  
 Side trims 160, without  
 ventilation  
 ABS (UL 94 HB)  
 off-white RAL 9002



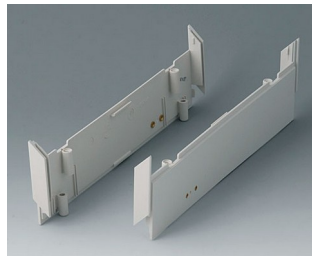
**B2023005**  
 Side trims 160, with ventilation  
 ABS  
 lagoon



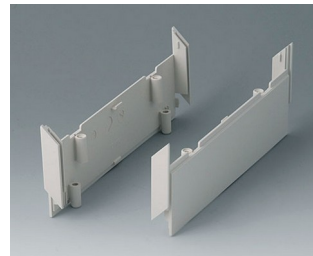
**B2023007**  
 Side trims 160, with ventilation  
 ABS (UL 94 HB)  
 off-white RAL 9002



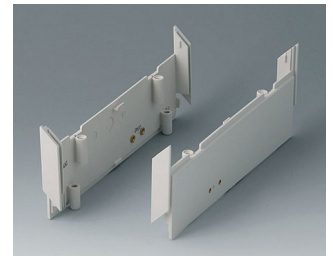
**B2030007**  
 Side panels 220, without holes  
 ABS (UL 94 HB)  
 off-white RAL 9002



**B2030107**  
 Side panels 220, with holes for  
 handle  
 ABS (UL 94 HB)  
 off-white RAL 9002



**B2031007**  
 Side panels 160, without holes  
 ABS (UL 94 HB)  
 off-white RAL 9002



**B2031107**  
 Side panels 160, with holes for  
 handle  
 ABS (UL 94 HB)  
 off-white RAL 9002



**B2116507**  
 Handle bar E  
 PA 6  
 off-white RAL 9002



**B2129507**  
 Handle bar D  
 PA 6  
 off-white RAL 9002



**B2210005**  
 MEDITEC D 220, without handle  
 bar  
 ABS (UL 94 HB)  
 off-white RAL 9002  
 290x260x74mm  
 IP 40



**B2210007**  
 MEDITEC D 220, without handle  
 bar  
 ABS (UL 94 HB)  
 off-white RAL 9002  
 290x260x74mm  
 IP 40



**B2210015**  
 MEDITEC D 220, without handle  
 bar  
 ABS (UL 94 HB)  
 off-white RAL 9002  
 290x260x74mm  
 IP 40



**B2210017**  
 MEDITEC D 220, without handle  
 bar  
 ABS (UL 94 HB)  
 off-white RAL 9002  
 290x260x74mm  
 IP 40



**B2210105**  
 MEDITEC D 220, with handle  
 bar  
 ABS (UL 94 HB)  
 off-white RAL 9002  
 290x260x74mm  
 IP 40



**B2210107**  
 MEDITEC D 220, with handle  
 bar  
 ABS (UL 94 HB)  
 off-white RAL 9002  
 290x260x74mm  
 IP 40

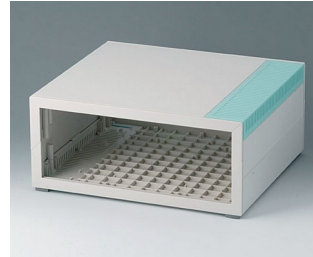
# MEDITEC



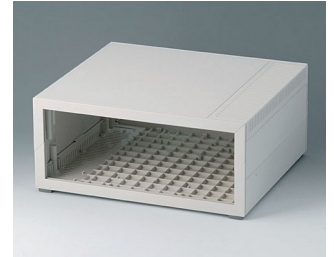
**B2210115**  
MEDITEC D 220, with handle bar  
ABS (UL 94 HB)  
off-white RAL 9002  
290x260x74mm  
IP 40



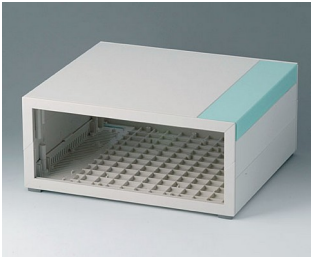
**B2210117**  
MEDITEC D 220, with handle bar  
ABS (UL 94 HB)  
off-white RAL 9002  
290x260x74mm  
IP 40



**B2210205**  
MEDITEC D 220, without handle bar  
ABS (UL 94 HB)  
off-white RAL 9002  
290x260x124mm  
IP 40



**B2210207**  
MEDITEC D 220, without handle bar  
ABS (UL 94 HB)  
off-white RAL 9002  
290x260x124mm  
IP 40



**B2210215**  
MEDITEC D 220, without handle bar  
ABS (UL 94 HB)  
off-white RAL 9002  
290x260x124mm  
IP 40



**B2210217**  
MEDITEC D 220, without handle bar  
ABS (UL 94 HB)  
off-white RAL 9002  
290x260x124mm  
IP 40



**B2210305**  
MEDITEC D 220, with handle bar  
ABS (UL 94 HB)  
off-white RAL 9002  
290x260x124mm  
IP 40



**B2210307**  
MEDITEC D 220, with handle bar  
ABS (UL 94 HB)  
off-white RAL 9002  
290x260x124mm  
IP 40



**B2210315**  
MEDITEC D 220, with handle bar  
ABS (UL 94 HB)  
off-white RAL 9002  
290x260x124mm  
IP 40



**B2210317**  
MEDITEC D 220, with handle bar  
ABS (UL 94 HB)  
off-white RAL 9002  
290x260x124mm  
IP 40



**B2211005**  
MEDITEC D 160, without handle bar  
ABS (UL 94 HB)  
off-white RAL 9002  
290x200x74mm  
IP 40



**B2211007**  
MEDITEC D 160, without handle bar  
ABS (UL 94 HB)  
off-white RAL 9002  
290x200x74mm  
IP 40



**B2211015**  
MEDITEC D 160, without handle bar  
ABS (UL 94 HB)  
off-white RAL 9002  
290x200x74mm  
IP 40



**B2211017**  
MEDITEC D 160, without handle bar  
ABS (UL 94 HB)  
off-white RAL 9002  
290x200x74mm  
IP 40



**B2211105**  
MEDITEC D 160, with handle bar  
ABS (UL 94 HB)  
off-white RAL 9002  
290x200x74mm  
IP 40



**B2211107**  
MEDITEC D 160, with handle bar  
ABS (UL 94 HB)  
off-white RAL 9002  
290x200x74mm  
IP 40

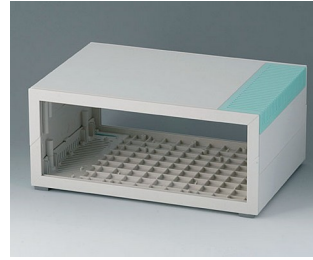
# MEDITEC



**B2211115**  
MEDITEC D 160, with handle bar  
ABS (UL 94 HB)  
off-white RAL 9002  
290x200x74mm  
IP 40



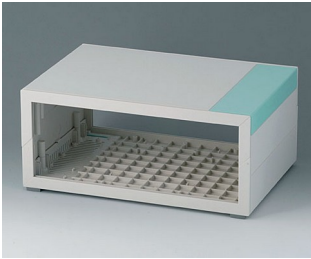
**B2211117**  
MEDITEC D 160, with handle bar  
ABS (UL 94 HB)  
off-white RAL 9002  
290x200x74mm  
IP 40



**B2211205**  
MEDITEC D 160, without handle bar  
ABS (UL 94 HB)  
off-white RAL 9002  
290x200x124mm  
IP 40



**B2211207**  
MEDITEC D 160, without handle bar  
ABS (UL 94 HB)  
off-white RAL 9002  
290x200x124mm  
IP 40



**B2211215**  
MEDITEC D 160, without handle bar  
ABS (UL 94 HB)  
off-white RAL 9002  
290x200x124mm  
IP 40



**B2211217**  
MEDITEC D 160, without handle bar  
ABS (UL 94 HB)  
off-white RAL 9002  
290x200x124mm  
IP 40



**B2211305**  
MEDITEC D 160, with handle bar  
ABS (UL 94 HB)  
off-white RAL 9002  
290x200x124mm  
IP 40



**B2211307**  
MEDITEC D 160, with handle bar  
ABS (UL 94 HB)  
off-white RAL 9002  
290x200x124mm  
IP 40



**B2211315**  
MEDITEC D 160, with handle bar  
ABS (UL 94 HB)  
off-white RAL 9002  
290x200x124mm  
IP 40



**B2211317**  
MEDITEC D 160, with handle bar  
ABS (UL 94 HB)  
off-white RAL 9002  
290x200x124mm  
IP 40



**B2212005**  
MEDITEC E 220, without handle bar  
ABS (UL 94 HB)  
off-white RAL 9002  
160x260x74mm  
IP 40



**B2212007**  
MEDITEC E 220, without handle bar  
ABS (UL 94 HB)  
off-white RAL 9002  
160x260x74mm  
IP 40



**B2212015**  
MEDITEC E 220, without handle bar  
ABS (UL 94 HB)  
off-white RAL 9002  
160x260x74mm  
IP 40



**B2212017**  
MEDITEC E 220, without handle bar  
ABS (UL 94 HB)  
off-white RAL 9002  
160x260x74mm  
IP 40



**B2212105**  
MEDITEC E 220, with handle bar  
ABS (UL 94 HB)  
off-white RAL 9002  
160x260x74mm  
IP 40



**B2212107**  
MEDITEC E 220, with handle bar  
ABS (UL 94 HB)  
off-white RAL 9002  
160x260x74mm  
IP 40

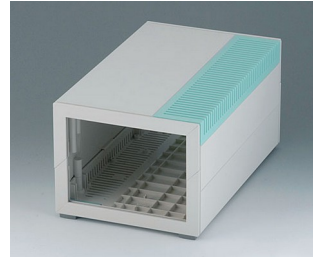
# MEDITEC



**B2212115**  
MEDITEC E 220, with handle bar  
ABS (UL 94 HB)  
off-white RAL 9002  
160x260x74mm  
IP 40



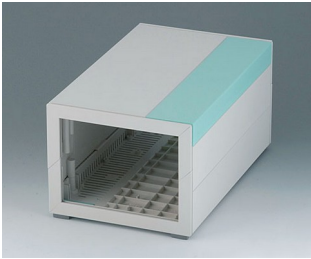
**B2212117**  
MEDITEC E 220, with handle bar  
ABS (UL 94 HB)  
off-white RAL 9002  
160x260x74mm  
IP 40



**B2212205**  
MEDITEC E 220, without handle bar  
ABS (UL 94 HB)  
off-white RAL 9002  
160x260x124mm  
IP 40



**B2212207**  
MEDITEC E 220, without handle bar  
ABS (UL 94 HB)  
off-white RAL 9002  
160x260x124mm  
IP 40



**B2212215**  
MEDITEC E 220, without handle bar  
ABS (UL 94 HB)  
off-white RAL 9002  
160x260x124mm  
IP 40



**B2212217**  
MEDITEC E 220, without handle bar  
ABS (UL 94 HB)  
off-white RAL 9002  
160x260x124mm  
IP 40



**B2212305**  
MEDITEC E 220, with handle bar  
ABS (UL 94 HB)  
off-white RAL 9002  
160x260x124mm  
IP 40



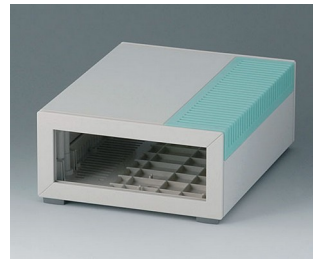
**B2212307**  
MEDITEC E 220, with handle bar  
ABS (UL 94 HB)  
off-white RAL 9002  
160x260x124mm  
IP 40



**B2212315**  
MEDITEC E 220, with handle bar  
ABS (UL 94 HB)  
off-white RAL 9002  
160x260x124mm  
IP 40



**B2212317**  
MEDITEC E 220, with handle bar  
ABS (UL 94 HB)  
off-white RAL 9002  
160x260x124mm  
IP 40



**B2213005**  
MEDITEC E 160, without handle bar  
ABS (UL 94 HB)  
off-white RAL 9002  
160x200x74mm  
IP 40



**B2213007**  
MEDITEC E 160, without handle bar  
ABS (UL 94 HB)  
off-white RAL 9002  
160x200x74mm  
IP 40



**B2213015**  
MEDITEC E 160, without handle bar  
ABS (UL 94 HB)  
off-white RAL 9002  
160x200x74mm  
IP 40



**B2213017**  
MEDITEC E 160, without handle bar  
ABS (UL 94 HB)  
off-white RAL 9002  
160x200x74mm  
IP 40



**B2213105**  
MEDITEC E 160, with handle bar  
ABS (UL 94 HB)  
off-white RAL 9002  
160x200x74mm  
IP 40



**B2213107**  
MEDITEC E 160, with handle bar  
ABS (UL 94 HB)  
off-white RAL 9002  
160x200x74mm  
IP 40

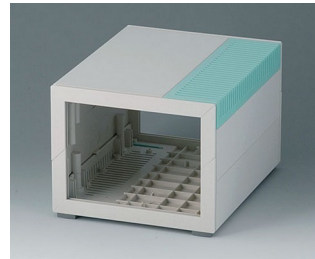
# MEDITEC



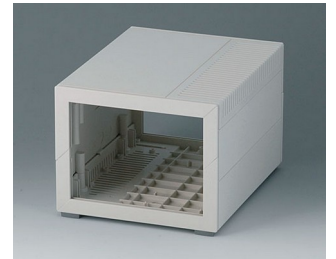
**B2213115**  
 MEDITEC E 160, with handle  
 bar  
 ABS (UL 94 HB)  
 off-white RAL 9002  
 160x200x74mm  
 IP 40



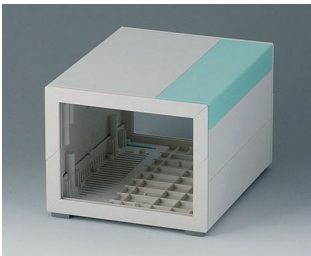
**B2213117**  
 MEDITEC E 160, with handle  
 bar  
 ABS (UL 94 HB)  
 off-white RAL 9002  
 160x200x74mm  
 IP 40



**B2213205**  
 MEDITEC E 160, without handle  
 bar  
 ABS (UL 94 HB)  
 off-white RAL 9002  
 160x200x124mm  
 IP 40



**B2213207**  
 MEDITEC E 160, without handle  
 bar  
 ABS (UL 94 HB)  
 off-white RAL 9002  
 160x200x124mm  
 IP 40



**B2213215**  
 MEDITEC E 160, without handle  
 bar  
 ABS (UL 94 HB)  
 off-white RAL 9002  
 160x200x124mm  
 IP 40



**B2213217**  
 MEDITEC E 160, without handle  
 bar  
 ABS (UL 94 HB)  
 off-white RAL 9002  
 160x200x124mm  
 IP 40



**B2213305**  
 MEDITEC E 160, with handle  
 bar  
 ABS (UL 94 HB)  
 off-white RAL 9002  
 160x200x124mm  
 IP 40



**B2213307**  
 MEDITEC E 160, with handle  
 bar  
 ABS (UL 94 HB)  
 off-white RAL 9002  
 160x200x124mm  
 IP 40



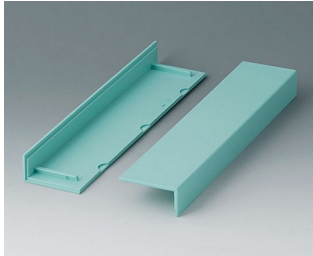
**B2213315**  
 MEDITEC E 160, with handle  
 bar  
 ABS (UL 94 HB)  
 off-white RAL 9002  
 160x200x124mm  
 IP 40



**B2213317**  
 MEDITEC E 160, with handle  
 bar  
 ABS (UL 94 HB)  
 off-white RAL 9002  
 160x200x124mm  
 IP 40

# MEDITEC

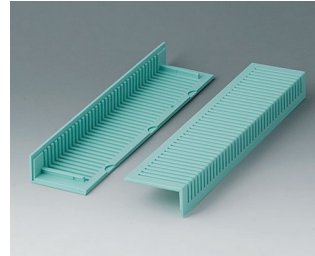
## System components to complete



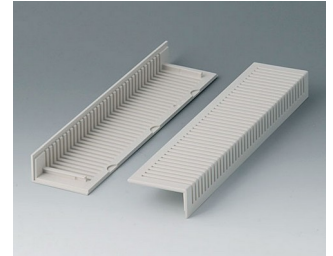
**B2020005**  
 Side trims 220, without  
 ventilation  
 ABS  
 lagoon



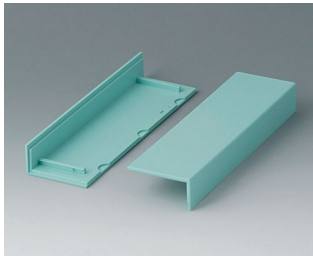
**B2020007**  
 Side trims 220, without  
 ventilation  
 ABS (UL 94 HB)  
 off-white RAL 9002



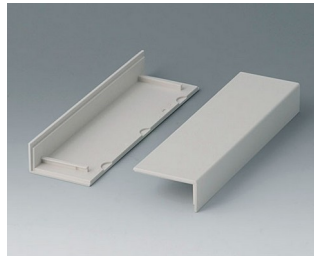
**B2021005**  
 Side trims 220, with ventilation  
 ABS  
 lagoon



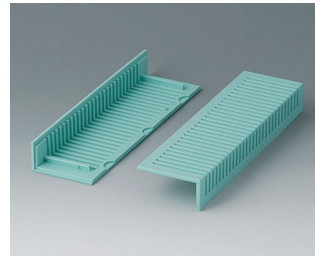
**B2021007**  
 Side trims 220, with ventilation  
 ABS (UL 94 HB)  
 off-white RAL 9002



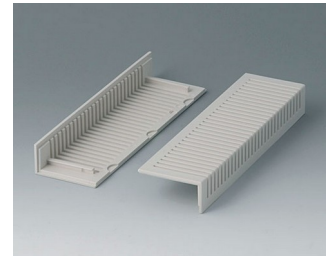
**B2022005**  
 Side trims 160, without  
 ventilation  
 ABS  
 lagoon



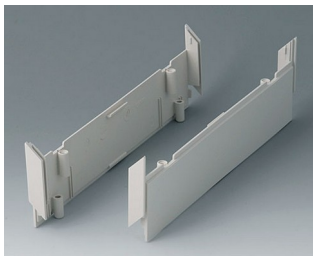
**B2022007**  
 Side trims 160, without  
 ventilation  
 ABS (UL 94 HB)  
 off-white RAL 9002



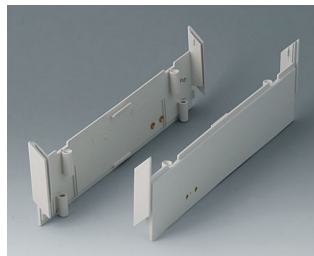
**B2023005**  
 Side trims 160, with ventilation  
 ABS  
 lagoon



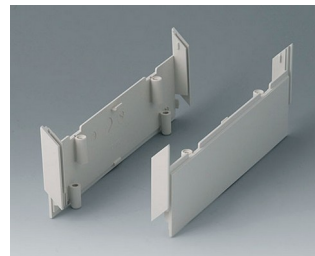
**B2023007**  
 Side trims 160, with ventilation  
 ABS (UL 94 HB)  
 off-white RAL 9002



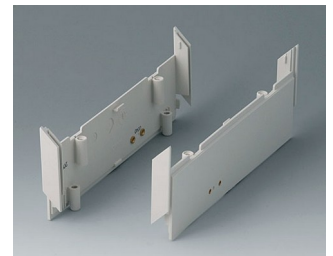
**B2030007**  
 Side panels 220, without holes  
 ABS (UL 94 HB)  
 off-white RAL 9002



**B2030107**  
 Side panels 220, with holes for  
 handle  
 ABS (UL 94 HB)  
 off-white RAL 9002



**B2031007**  
 Side panels 160, without holes  
 ABS (UL 94 HB)  
 off-white RAL 9002



**B2031107**  
 Side panels 160, with holes for  
 handle  
 ABS (UL 94 HB)  
 off-white RAL 9002



**B2116507**  
 Handle bar E  
 PA 6  
 off-white RAL 9002



**B2129507**  
 Handle bar D  
 PA 6  
 off-white RAL 9002



**B2133012**  
 Wall mounting brackets  
 PA 6  
 volcano



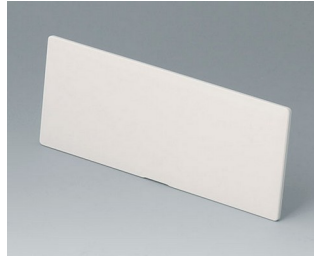
**B2135017**  
 Connectors  
 ABS (UL 94 HB)  
 off-white RAL 9002

# MEDITEC

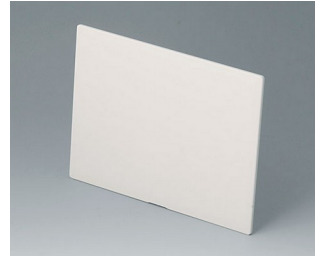
## Accessory to complete



**B2116007**  
Sloping control panel E  
ABS (UL 94 HB)  
off-white RAL 9002



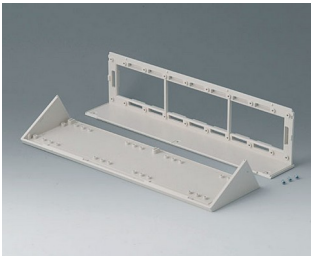
**B2116307**  
Front / rear panel E, flat  
ABS (UL 94 HB)  
off-white RAL 9002  
141,6x55,6x3mm



**B2116407**  
Front / rear panel Z1  
ABS (UL 94 HB)  
off-white RAL 9002  
141,6x105,6x3mm



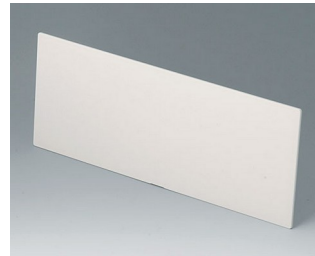
**B2116707**  
Infill panel E  
ABS (UL 94 HB)  
off-white RAL 9002  
142x55x5mm



**B2129007**  
Sloping control panel D  
ABS (UL 94 HB)  
off-white RAL 9002



**B2129307**  
Front / rear panel D, flat  
ABS (UL 94 HB)  
off-white RAL 9002  
271,6x55,6x3mm



**B2129407**  
Front / rear panel Z1  
ABS (UL 94 HB)  
off-white RAL 9002  
271,6x105,6x3mm



**B2129707**  
Infill panel D  
ABS (UL 94 HB)  
off-white RAL 9002  
272x55x5mm

## Accessory "wall/holder"



**B2133012**  
Wall mounting brackets  
PA 6  
volcano



**B2134012**  
Stacking elements  
PA 6  
volcano

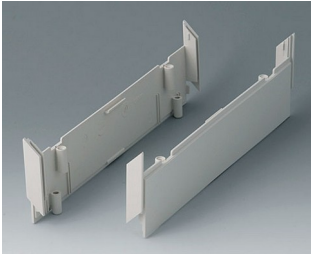
## Accessory "screws"



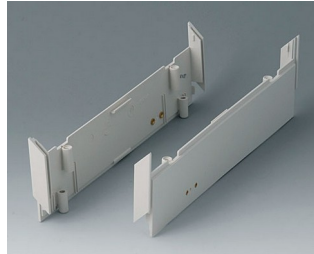
**A9199008**  
Set of screws

# MEDITEC

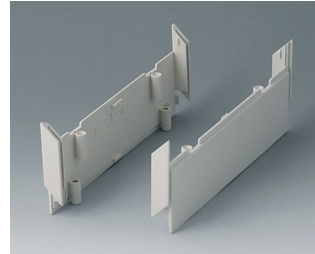
## Accessory



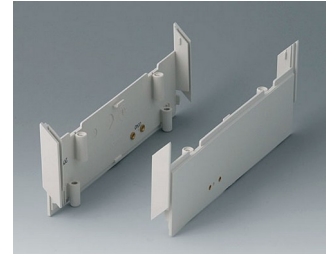
**B2030007**  
Side panels 220, without holes  
ABS (UL 94 HB)  
off-white RAL 9002



**B2030107**  
Side panels 220, with holes for  
handle  
ABS (UL 94 HB)  
off-white RAL 9002



**B2031007**  
Side panels 160, without holes  
ABS (UL 94 HB)  
off-white RAL 9002



**B2031107**  
Side panels 160, with holes for  
handle  
ABS (UL 94 HB)  
off-white RAL 9002



**B2116407**  
Front / rear panel Z1  
ABS (UL 94 HB)  
off-white RAL 9002  
141,6x105,6x3mm



**B2116507**  
Handle bar E  
PA 6  
off-white RAL 9002



**B2116707**  
Infill panel E  
ABS (UL 94 HB)  
off-white RAL 9002  
142x55x5mm



**B2129407**  
Front / rear panel Z1  
ABS (UL 94 HB)  
off-white RAL 9002  
271,6x105,6x3mm



**B2129507**  
Handle bar D  
PA 6  
off-white RAL 9002



**B2129707**  
Infill panel D  
ABS (UL 94 HB)  
off-white RAL 9002  
272x55x5mm



**B2134012**  
Stacking elements  
PA 6  
volcano



**B2135017**  
Connectors  
ABS (UL 94 HB)  
off-white RAL 9002

Salvo modifiche tecniche. © OKW Gehäusesysteme, Buchen/Germania.