

NEW

www.okw.com



NEW PRODUCTS

ENCLOSURES,
TUNING KNOBS
AND SERVICES

OKW
GEHÄUSE
SYSTEME

NEW



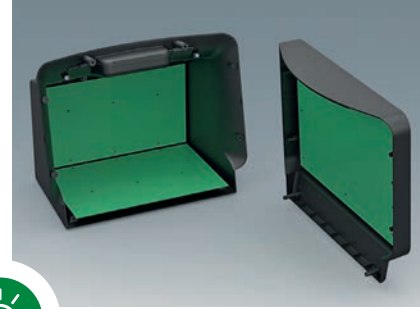
COMMUNITEC

Modern, large-format table top enclosures for comfortable interaction and visualisation

The COMMUNITEC enclosure range is ideal for housing large-format electronic assemblies presented in an elegant, modern and design-oriented enclosure. A key feature is the recessed handle discreetly integrated behind the operating panel, enabling comfortable transport and greater flexibility in use.

PRODUCT ADVANTAGES

- Modern and functional design.
- Integrated handle and carrying function for efficient handling.
- Available in two sizes, with multiple colour combinations possible.
- Operating panel with a recessed area to protect membrane keypads or large-format 11.5" - 14" (29 - 35 cm) displays, as well as a flat surface for front mounted operating elements and connectors.
- Large side areas for connectors, ventilation slots for increased heat dissipation or the integration of measuring instruments.
- The Rear of enclosure features a recessed area to protect built-in sockets, plugs and supply cables and includes an additional recess for a product label.
- Four-part design: basic housing, operating panel, handle recess panel and bottom panel – available as separate components for individual colour combinations.



MATERIAL / COLOUR

- ASA+PC-FR (UL 94 V-0), anthracite grey (RAL 7016)
 - ASA+PC-FR (UL 94 V-0), traffic white (RAL 9016)
- As a colour-contrast option, the handle recess panel is also available in:
- ASA+PC-FR (UL 94 V-0), traffic grey A (RAL 7042)

OUTSIDE DIMENSIONS IN MM (W x H x D)

- COMMUNITEC S
283 x 246 x 194 mm
- COMMUNITEC M
344 x 274 x 219 mm

PROTECTION CLASS IP40

CUSTOMISING OPTIONS

- Machining
- Printing
- Laser marking
- Decor foils
- Special material
- Assembly of accessories
- EMC shielding



PRODUCT ADVANTAGES

- High degree of configuration flexibility: fastening pillars for PCBs and components in the basic housing, in the operating panel and on the bottom panel.
- Easy assembly/installation: efficient assembly of the bottom panel outside the housing. The bottom panel, together with the electronic unit, can then be mounted into the COMMUNITEC basic housing.
- Particularly easy installation and servicing thanks to good access to pre-assembled components – from above through the opening for the handle recess panel and/or from the front.
- Includes self-adhesive, non-slip feet for reliable positioning.

handle recess panel

operating panel

bottom panel

basic housing

APPLICATION FIELDS

Medical equipment, e.g. for patient monitoring, diagnosis and surveillance, for example, for ventilators, neuromonitoring and much more. Aesthetic medicine, e.g. laser treatment, foot care and IPL (Intense Pulsed Light) applications. Versatile measuring and testing devices in laboratories, testing technology, automation, etc. For fault analysis and quality control. Oscilloscopes with a wide range of functions.

NEW



MATERIAL / COLOUR

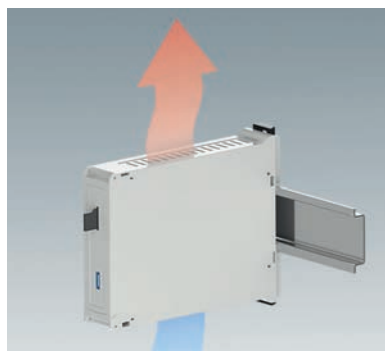
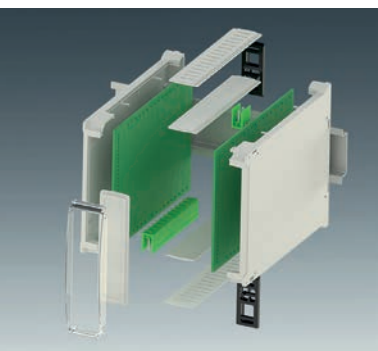
- PC (UL 94 V-0), light grey (RAL 7035)

OUTSIDE DIMENSIONS IN MM (W x H x D)

95 x 23 x 113 mm

CUSTOMISING OPTIONS

- Machining
- Printing
- Laser marking
- Decor foils
- Assembly of accessories



RAILTEC BP22

Range of DIN rail enclosures expanded with a new panel version

The RAILTEC BP M22 is a versatile electronics enclosure designed for simple and quick mounting on EN 60715 TH35 DIN rails. It is ideally suited for measuring/control devices and is dimensioned according to industry standard sizes.

PRODUCT ADVANTAGES

- The RAILTEC BP M22 is available in three different side panel configurations: closed, with ventilation slots on one side, and with ventilation slots on both sides for increased heat dissipation.
- The panel version provides simple and flexible installation of the electronics as well as efficient, screwless case assembly.
- For plug headers max. 2 x 16-pin, 5.08, fixed or pluggable. Simple and quick assembly by locking onto DIN rails EN 60715 TH35.
- An optional transparent hinged cover (accessory) is also available. This protects the front panel and the integrated control/display elements, interfaces, etc., while ensuring a clear view. The hinged cover can be swivelled up or down.

NEW



MATERIAL / COLOUR

- ASA (UL94 HB), anthracite grey (RAL 7016)

**OUTSIDE DIMENSIONS
IN MM (W x H x D)**

100 x 100 x 20 mm

CUSTOMISING OPTIONS

- Machining
- Special material
- Assembly of accessories



POLE/MAST MOUNTING BRACKET

For innovative mounting of industrial enclosures

For the secure and stable mounting of IP rated electronic enclosures to poles, masts, and pipes using cable ties or stainless steel screw bands, suitable for pole diameters from 30 mm. The bracket is attached to the rear of the enclosure (four drilled holes required) and is manufactured from UV resistant material.

NOTE

Every application (environment, sealing requirements, enclosure size/version, mast diameter, etc.) is different. For this reason, no mounting screws, cable ties or stainless steel screw bands are supplied; only the mast/pipe bracket is included. However, on request, we can provide a wide range of solutions tailored precisely to the intended application.



NEW



MATERIAL / COLOUR

- PA 6 (UL 94 V-0), light grey (RAL 7035), M12x1,5,
- M12x1,5 - High-Airflow

- PA 6 (UL 94 V-0), black (RAL 9005), M12x1,5, M12x1,5 - High-Airflow

PROTECTION RATING

IP 69, IP 66



Pressure compensation elements

New pressure equalisation elements to prevent condensation

6

Two new versions of the M12x1.5 pressure equalisation elements are now available in the range of accessories for larger devices. The theoretical air flow rate (RQ) is 10 l/h and 24 l/h, respectively, at 0.07 bar.

PRODUCT ADVANTAGES


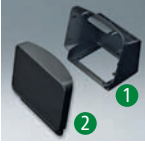


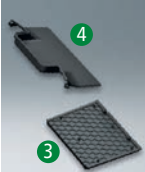
- Pressure equalisation elements with a high air flow rate protect sensitive electronics. A temperature drop, for example due to changing weather conditions, can lead to a build-up of negative pressure in

side sealed enclosures. As a result, water and dirt may be drawn in through the seals, potentially damaging the electronics.

- The pressure equalisation elements feature a metric connection thread. Suitable lock nuts with M12 threads from the OKW portfolio are available for installation inside the enclosures.
- Note: The pressure equalisation element will not function if it is blocked by dust and/or submerged in water.


COMMUNITEC

Information on pages 2-3





COMMUNITEC					
Article	Outside dim. in mm W H D	Complete enclosure			
 S	283 246 194	To complete the set, each requires a basic housing, an operating panel, a handle recess panel and a bottom panel plate is required. Different colour versions can be created on request. The handle recess panel and bottom panel are designed for use with both enclosure sizes.			
Article	Individual components	Material	Colour	Part-No.	
	Basic housing ①	ASA+PC-FR (UL 94 V-0)	traffic white (RAL 9016)	C 36 02 707	
	Basic housing		anthracite grey (RAL 7016)	C 36 02 708	
	Operating panel ②		traffic white (RAL 9016)	C 36 02 407	
	Operating panel		anthracite grey (RAL 7016)	C 36 02 408	
Article	Outside dim. in mm W H D	Complete enclosure			
 M	344 274 219	To complete the set, each requires a basic housing, an operating panel, a handle recess panel and a bottom panel plate is required. Different colour versions can be created on request. The handle recess panel and bottom panel are designed for use with both enclosure sizes.			
Article	Individual components	Material	Colour	Part-No.	
	Basic housing	ASA+PC-FR (UL 94 V-0)	traffic white (RAL 9016)	C 36 04 707	
	Basic housing		anthracite grey (RAL 7016)	C 36 04 708	
	Operating panel		traffic white (RAL 9016)	C 36 04 407	
	Operating panel		anthracite grey (RAL 7016)	C 36 04 408	
Article	Individual components	Material	Colour	Part-No.	
	suitable for both sizes	ASA+PC-FR (UL 94 V-0)	traffic white (RAL 9016)	C 36 02 807	
	Bottom panel ③		anthracite grey (RAL 7016)	C 36 02 808	
	Bottom panel		traffic white (RAL 9016)	C 36 02 607	
	Handle recess panel ④		anthracite grey (RAL 7016)	C 36 02 608	
	Handle recess panel		traffic grey A (RAL 7042)	C 36 02 601	

RAILTEC BP22

Information on page 4

RAILTEC BP22					
Article	Outside dim. in mm W H D	Version	Material / Colour	Part-No.	
	95 23 113	2 closed side panels	PC (UL 94 V-0), light grey (RAL 7035)	B 65 22 101	
		1 side panel closed, 1 side panel with ventilation slots		B 65 22 102	
		2 side panels with ventilation slots		B 65 22 103	


ACCESSORIES RAILTEC BP22

Article	Version / Usage	Material / Colour	Part-No.
 Hinged cover	Hinged convex cover for RAILTEC BP, M22. Can be swivelled up or down. Protects electronics, interfaces and/or operating elements.	transparent	B 66 22 101
 Front panel ①	Front panel for RAILTEC BP, M22 as an accessory for replacement purposes.	PC (UL 94 V-0), light grey (RAL 7035)	B 65 22 801
 Side panel closed ②	Side panel closed for RAILTEC BP, M22 as an accessory for replacement purposes.	PC (UL 94 V-0), light grey (RAL 7035)	B 65 22 811
 Side panel with ventilation slots ③	Side panel with ventilation slots for RAILTEC BP, M22 as an accessory for replacement purposes.	PC (UL 94 V-0), light grey (RAL 7035)	B 65 22 821

POLE/MAST MOUNTING BRACKET

Information on page 5








ACCESSORIES

Article	Version / Usage	Material / Colour / Dimensions	Part-No.
 Pole/mast mounting bracket	For the secure and stable mounting of IP rated electronic enclosures to poles, masts, and pipes using cable ties or stainless steel screw bands.	ASA (UL94 HB) / anthracite grey (RAL 7016) / 100 x 100 x 20 mm (W x H x D)	A 93 25 018

PRESSURE EQUALISATION ELEMENTS

Information on page 6

ACCESSORIES

Article	Version / Usage	Material / Colour / Dimensions	Part-No.
 Pressure equalisation element M12x1.5	Theoretical air flow rate RQ: 10 l/h - 0.07 bar Water ingress point: > 0.83 bar (dynamic WEP, 30 seconds) Temperature range: -40°C / +100°C. Seal material: Water and oil-repellent PES membrane Protection rating: IP66, IP69	PA 6 (UL 94 V-0) / light grey RAL 7035 / M12x1.5	C2304967
 Pressure equalisation element M12x1.5	Theoretical air flow rate RQ: 10 l/h - 0.07 bar Water ingress point: > 0.83 bar (dynamic WEP, 30 seconds) Temperature range: -40°C / +100°C. Seal material: Water and oil-repellent PES membrane Protection rating: IP66, IP69	PA 6 (UL 94 V-0) / black RAL 9005 / M12x1.5	C2304969
 Pressure equalisation element M12x1.5- High-Airflow	Theoretical air flow rate RQ: 24 l/h - 0.07 bar Water ingress point: > 0.2 bar (dynamic WEP, 30 seconds) Temperature range: -40°C / +100°C. Seal material: Water and oil-repellent PTFE membrane Protection rating: IP66, IP69	PA 6 (UL 94 V-0) / light grey RAL 7035 / M12x1.5	C2305967
 Pressure equalisation element M12x1.5- High-Airflow	Theoretical air flow rate RQ: 24 l/h - 0.07 bar Water ingress point: > 0.2 bar (dynamic WEP, 30 seconds) Temperature range: -40°C / +100°C. Seal material: Water and oil-repellent PTFE membrane Protection rating: IP66, IP69	PA 6 (UL 94 V-0) / black RAL 9005 / M12x1.5	C2305969
 Counternut M12x1.5	For fixing the pressure equalisation element on the housing.	PA 6 / light grey RAL 7035 / M12x1.5	C2312117
 Pressure equalisation element M6x0.75	Airflow: 6.5 L/min - 0.25 bar; 16.5 L/min - 1 bar. Water entry pressure: > 6 bar. Temperature range: -40°C/+110°C. Sealing material: BASF Luquafleece + PA6 mesh (insert molding). Supply: 1 pressure equalisation element, 1 seal washer, 1 nut	PA 6 (UL 94 V-0) / light grey RAL 7035 / M6x0.75	C2306917
 Pressure equalisation element M10x1	Airflow: 19.5 L/min - 0.25 bar; 43.5 L/min - 1 bar. Water entry pressure: > 6 bar. Temperature range: -40°C/+110°C. Sealing material: BASF Luquafleece + PA6 mesh (insert molding). Supply: 1 pressure equalisation element, 1 seal washer, 1 nut	PA 6 (UL 94 V-0) / light grey RAL 7035 / M10x1	C2310917

THE COMPLETE PRODUCT RANGE



BODY-CASE



MINITEC



STYLE-CASE



SMART-CASE



DATEC-CONTROL



HAND-TERMINAL



SENSO-CASE



CARRYTEC



INTERFACE-TERMINAL



SMART-CONTROL



NET-BOX



DIATEC



ROBUST-BOX



IN-BOX



SNAPTEC



PROTEC



SMART-TERMINAL



EVOTEC



SHELL-TYPE CASES



TOPTec



MOTEC



RAILTEC B/C



TOP-KNOBS



TUNING KNOBS 'CLASSIC'



SOFT-CASE



DATEC-POCKET-BOX



DATEC-MOBIL-BOX



DATEC-COMPACT



ERGO-CASE



SLIM-CASE



CONNECT



SMART-PANEL



MINI-DATA-BOX



EASYTEC



SOLID-BOX



SMART-BOX



COMTEC



DESK CASES



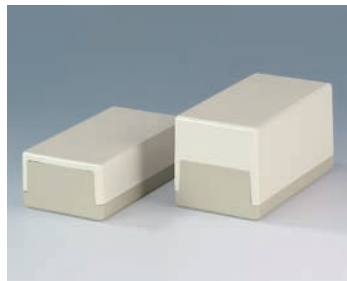
DATEC-TERMINAL



UNITEC



SYNERGY



FLAT-PACK CASE



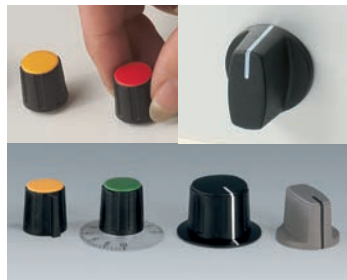
ART-CASE



COMMUNITEC



COM-KNOBS



COMBINATION KNOBS



STAR-KNOBS



CONTROL-KNOBS



Modification services

Customised enclosures modified to your exact requirements

We can process and modify our enclosures and tuning knobs according to your needs. From conception to development, through to full series production, we can offer you the solution you need, in the quantities you require.

LACQUERING

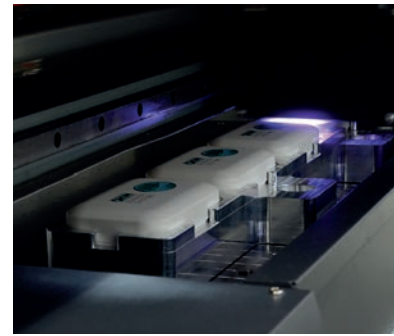
To ensure that the plastic enclosures align with the product application or the company's corporate identity, they can be painted in any customer-specified colour. For special requirements, such as enhancing the tactile feel of the product or creating metallic effects, OKW also offers a selection of specialised coatings.

PRINTING

The enclosures can be individually printed or labelled. This allows the logo to be perfectly showcased or important functions of the end devices to be highlighted.

DECOR FOILS

For lettering and colour design, we can digitally print decor foils quickly and easily for small batches starting with 1 unit. The digital printing process allows different versions without a great deal of trouble, e.g. in design, with consecutive numbering, codes and technical specifications. Colour gradations are also possible.



LASER MARKING

Laser marking is ideal for permanent and abrasion-resistant labelling and marking. In particular, very small machine-readable markings, e.g. QR codes, barcodes, consecutive numbering of individual parts and texts can be easily realised.

MACHINING

OKW's in-house service centre offers various mechanical processing options, such as milling, drilling, punching and countersinking.

INSTALLATION / ASSEMBLY OF ACCESSORIES

Assembly and gluing of housing accessories, assembly of components, individual fitting with mounting domes, light guides and much more are also available as services.

SPECIAL MATERIAL

SPECIAL MATERIAL "INDIVIDUAL COLOURS"

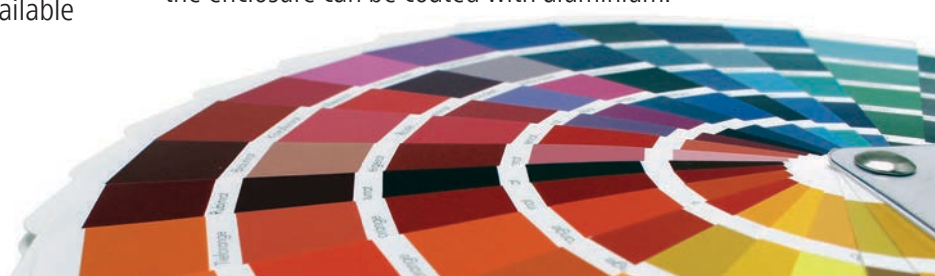
On request, we can also produce many of our enclosures and tuning knobs in special colours. Individual colour adjustments are possible according to a sample, range of dyes, RAL or Pantone.

SPECIAL MATERIAL "V-0"

Manufacturing of enclosures in flame-resistant plastic material on request.

EMC SHIELDING

To protect the electronics from external interference and their own interference emissions, the inside of the enclosure can be coated with aluminium.



Your partner:



OKW

GEHÄUSE
SYSTEME

Odenwälder Kunststoffwerke
Gehäusesysteme GmbH

Friedrich-List-Str. 3
74722 Buchen, Germany
Tel. 0 62 81 | 404-00
EMail Info@okw.com
Web www.okw.com



Request a sample!

It's quick and easy to do online – simply add the desired enclosure/knob design to your 'shopping cart' on the OKW website and check the 'Sample' box. Then fill in your contact details and submit the form. You will receive a copy of your request by email and your sample request will be processed immediately.

Stay up to date!
Follow us across our social media channels



Turtle © by OKW Gehäusesysteme, D-74722 Buchen.
Errors and misprints do not justify any claims for damages.
April 2026.