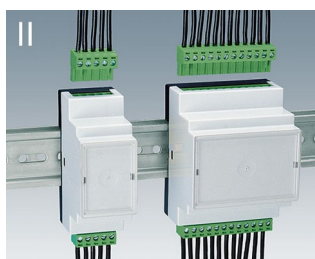
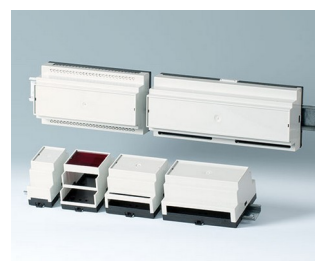


# RAILTEC B

## Cajas de raíles DIN versátiles

La familia de cajas RAILTEC B destaca por el encaje rápido y sencillo en los raíles estándar DIN EN 60715 TH 35.

- 6 tamaños (de 2 a 12 módulos de ancho) de conformidad con la norma DIN 43880, 4 tamaños (2, 4, 6 y 9 módulos de ancho) de bajo perfil, 2 versiones, 4 tamaños (2, 4, 6 y 9 módulos de ancho) de mayor altura y bajo perfil
- Completamente aislada y protegida acorde con VBG 4 e IEC 529/DIN VDE 0470-1.
- Material resistente a las llamas (UL 94 V-0).
- **Modelo I:** para regletas de bornes de paso 5,0/5,08 mm.
- **Modelo II:** para regletas de bornas PCB de paso 5,0/5,08 mm.
- **Modelo III:** caja cerrada para conectores delanteros, conectores D-SUB, etc.
- **Modelo IV:** para regletas de bornes de paso 5,0/5,08 mm (simple fila).
- **Modelo V:** con perforaciones de paso 5,0 mm.
- **Modelo VI:** caja abierta para albergar distintas combinaciones individuales de cubierta de bornes y panel de separación; a elegir entre 1 ó 2 niveles de conexiones.
- Cubierta para conectores KNX, adecuada para anchuras de 2 y 4 módulos de la serie VI y con parte superior plana.
- Apropiaada para raíles DIN EN 60715 TH35 o montaje directo en la pared.
- Con o sin ranuras de ventilación para una buena disipación del calor.
- Montaje flexible: colocación de las placas de circuito en las tres direcciones; parte inferior con cabezales de sujeción, parte superior con guías.
- Clip de enganche premontado en la parte inferior.
- Tapa transparente (accesorio) para proteger los elementos de mando y visualización.
- Categoría de protección < IP 40
- **NOVEDAD:** RAILTEC BP, M22 – Versión con paneles laterales conectables y panel frontal. Montaje sencillo y rápido en raíles DIN EN 60715 TH35. Cubierta transparente con bisagras opcional (accesorio).



# RAILTEC B

## Aplicaciones

Aplicación universal como carcasa para instalaciones. Cumple los requisitos de la industria del automóvil y de maquinaria. Smart Factory / Industrie 4.0. Equipamiento técnico para la automatización de edificios y SMART-HOME. Especialmente adecuado para tecnologías de control y regulación.



CAN BUS system module for packaging machines



Earthfault detection and short-circuit indicator



Energy management in data centres



Industrial Gateways



Industrial VDSL2/ADSL2 modems



Monitoring of electrical variables



Power measuring device for energy analysis



Remote meter for condition monitoring



Smart meter for electricity consumption



Water level detector

## Modificaciones específicas del cliente

¿Qué necesita en su producto personalizado? En caso necesario, le suministramos las cajas y botones giratorios listas para el montaje con todas las modificaciones y acabados precisos. Opciones de productos para Railtec B

# RAILTEC B



Mecanizado



Lacado



Impresión



Inscripción láser



Láminas decorativas



Confección y montaje

## Versiones



**B6501110**  
RAILTEC B, 2 modules, Vers. V  
PC (UL 94 V-0)  
light grey RAL 7035  
35x86x58mm



**B6501111**  
RAILTEC B, 2 modules, Vers. I  
PC (UL 94 V-0)  
light grey RAL 7035  
35x86x58mm



**B6501112**  
RAILTEC B, 2 modules, Vers. II  
PC (UL 94 V-0)  
light grey RAL 7035  
35x86x58mm



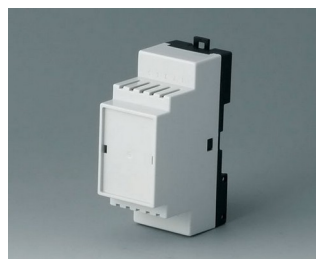
**B6501113**  
RAILTEC B, 2 modules, Vers. III  
PC (UL 94 V-0)  
light grey RAL 7035  
35x86x58mm



**B6501114**  
RAILTEC B, 2 modules, Vers. I  
PC (UL 94 V-0)  
light grey RAL 7035  
35x86x58mm



**B6501115**  
RAILTEC B, 2 modules, Vers. II  
PC (UL 94 V-0)  
light grey RAL 7035  
35x86x58mm



**B6501116**  
RAILTEC B, 2 modules, Vers. III  
PC (UL 94 V-0)  
light grey RAL 7035  
35x86x58mm



**B6501117**  
RAILTEC B, 2 modules, Vers. IV  
PC (UL 94 V-0)  
light grey RAL 7035  
35x86x58mm

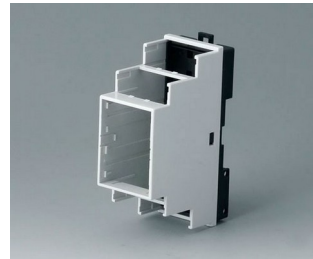
# RAILTEC B



**B6501118**  
RAILTEC B, 2 modules, Vers. IV  
PC (UL 94 V-0)  
light grey RAL 7035  
35x86x58mm



**B6501119**  
RAILTEC B, 2 modules, Vers. V  
PC (UL 94 V-0)  
light grey RAL 7035  
35x86x58mm



**B6501121**  
RAILTEC B, 2 modules, Vers. VI  
PC (UL 94 V-0)  
light grey RAL 7035  
35x90x58mm



**B6501223**  
RAILTEC B, 2 modules, Vers. III  
low profile  
PC (UL 94 V-0)  
light grey RAL 7035  
35x86x31,25mm



**B6501229**  
RAILTEC B, 2 modules, Vers.  
low profile  
PC (UL 94 V-0)  
light grey RAL 7035  
35x89,6x31,25mm



**B6502110**  
RAILTEC B, 3 modules, Vers. V  
PC (UL 94 V-0)  
light grey RAL 7035  
52,5x86x58mm



**B6502111**  
RAILTEC B, 3 modules, Vers. I  
PC (UL 94 V-0)  
light grey RAL 7035  
52,5x86x58mm



**B6502112**  
RAILTEC B, 3 modules, Vers. II  
PC (UL 94 V-0)  
light grey RAL 7035  
52,5x86x58mm



**B6502113**  
RAILTEC B, 3 modules, Vers. III  
PC (UL 94 V-0)  
light grey RAL 7035  
52,5x86x58mm



**B6502114**  
RAILTEC B, 3 modules, Vers. I  
PC (UL 94 V-0)  
light grey RAL 7035  
52,5x86x58mm



**B6502115**  
RAILTEC B, 3 modules, Vers. II  
PC (UL 94 V-0)  
light grey RAL 7035  
52,5x86x58mm



**B6502116**  
RAILTEC B, 3 modules, Vers. III  
PC (UL 94 V-0)  
light grey RAL 7035  
52,5x86x58mm



**B6502117**  
RAILTEC B, 3 modules, Vers. IV  
PC (UL 94 V-0)  
light grey RAL 7035  
52,5x86x58mm



**B6502118**  
RAILTEC B, 3 modules, Vers. IV  
PC (UL 94 V-0)  
light grey RAL 7035  
52,5x86x58mm



**B6502119**  
RAILTEC B, 3 modules, Vers. V  
PC (UL 94 V-0)  
light grey RAL 7035  
52,5x86x58mm



**B6502121**  
RAILTEC B, 3 modules, Vers. VI  
PC (UL 94 V-0)  
light grey RAL 7035  
52,5x90x58mm

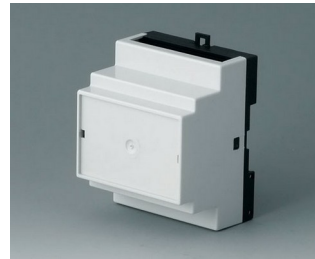
# RAILTEC B



**B6503110**  
RAILTEC B, 4 modules, Vers. V  
PC (UL 94 V-0)  
light grey RAL 7035  
70x86x58mm



**B6503111**  
RAILTEC B, 4 modules, Vers. I  
PC (UL 94 V-0)  
light grey RAL 7035  
70x86x58mm



**B6503112**  
RAILTEC B, 4 modules, Vers. II  
PC (UL 94 V-0)  
light grey RAL 7035  
70x86x58mm



**B6503113**  
RAILTEC B, 4 modules, Vers. III  
PC (UL 94 V-0)  
light grey RAL 7035  
70x86x58mm



**B6503114**  
RAILTEC B, 4 modules, Vers. I  
PC (UL 94 V-0)  
light grey RAL 7035  
70x86x58mm



**B6503115**  
RAILTEC B, 4 modules, Vers. II  
PC (UL 94 V-0)  
light grey RAL 7035  
70x86x58mm



**B6503116**  
RAILTEC B, 4 modules, Vers. III  
PC (UL 94 V-0)  
light grey RAL 7035  
70x86x58mm



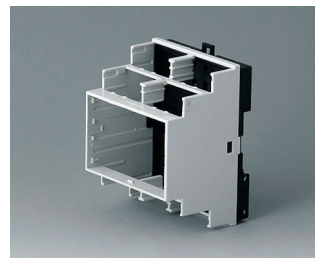
**B6503117**  
RAILTEC B, 4 modules, Vers. IV  
PC (UL 94 V-0)  
light grey RAL 7035  
70x86x58mm



**B6503118**  
RAILTEC B, 4 modules, Vers. IV  
PC (UL 94 V-0)  
light grey RAL 7035  
70x86x58mm



**B6503119**  
RAILTEC B, 4 modules, Vers. V  
PC (UL 94 V-0)  
light grey RAL 7035  
70x86x58mm



**B6503121**  
RAILTEC B, 4 modules, Vers. VI  
PC (UL 94 V-0)  
light grey RAL 7035  
70x90x58mm



**B6503223**  
RAILTEC B, 4 modules, Vers. III  
low profile  
PC (UL 94 V-0)  
light grey RAL 7035  
70x86x31,25mm



**B6503229**  
RAILTEC B, 4 modules, Vers.  
low profile  
PC (UL 94 V-0)  
light grey RAL 7035  
70x89,6x31,25mm



**B6504110**  
RAILTEC B, 6 modules, Vers. V  
PC (UL 94 V-0)  
light grey RAL 7035  
105x86x59mm



**B6504111**  
RAILTEC B, 6 modules, Vers. I  
PC (UL 94 V-0)  
light grey RAL 7035  
105x86x59mm



**B6504112**  
RAILTEC B, 6 modules, Vers. II  
PC (UL 94 V-0)  
light grey RAL 7035  
105x86x59mm

# RAILTEC B



**B6504113**  
RAILTEC B, 6 modules, Vers. III  
PC (UL 94 V-0)  
light grey RAL 7035  
105x86x59mm



**B6504114**  
RAILTEC B, 6 modules, Vers. I  
PC (UL 94 V-0)  
light grey RAL 7035  
105x86x59mm



**B6504115**  
RAILTEC B, 6 modules, Vers. II  
PC (UL 94 V-0)  
light grey RAL 7035  
105x86x59mm



**B6504116**  
RAILTEC B, 6 modules, Vers. III  
PC (UL 94 V-0)  
light grey RAL 7035  
105x86x59mm



**B6504117**  
RAILTEC B, 6 modules, Vers. IV  
PC (UL 94 V-0)  
light grey RAL 7035  
105x86x59mm



**B6504118**  
RAILTEC B, 6 modules, Vers. IV  
PC (UL 94 V-0)  
light grey RAL 7035  
105x86x59mm



**B6504119**  
RAILTEC B, 6 modules, Vers. V  
PC (UL 94 V-0)  
light grey RAL 7035  
105x86x59mm



**B6504121**  
RAILTEC B, 6 modules, Vers. VI  
PC (UL 94 V-0)  
light grey RAL 7035  
105x90x58mm



**B6504223**  
RAILTEC B, 6 modules, Vers. III  
low profile  
PC (UL 94 V-0)  
light grey RAL 7035  
105x86x31,25mm



**B6504229**  
RAILTEC B, 6 modules, Vers.  
low profile  
PC (UL 94 V-0)  
light grey RAL 7035  
105x89,6x31,25mm



**B6505110**  
RAILTEC B, 9 modules, Vers. V  
PC (UL 94 V-0)  
light grey RAL 7035  
157x86x59mm



**B6505111**  
RAILTEC B, 9 modules, Vers. I  
PC (UL 94 V-0)  
light grey RAL 7035  
157x86x59mm



**B6505112**  
RAILTEC B, 9 modules, Vers. II  
PC (UL 94 V-0)  
light grey RAL 7035  
157x86x59mm



**B6505113**  
RAILTEC B, 9 modules, Vers. III  
PC (UL 94 V-0)  
light grey RAL 7035  
157x86x59mm



**B6505114**  
RAILTEC B, 9 modules, Vers. I  
PC (UL 94 V-0)  
light grey RAL 7035  
157x86x59mm



**B6505115**  
RAILTEC B, 9 modules, Vers. II  
PC (UL 94 V-0)  
light grey RAL 7035  
157x86x59mm

# RAILTEC B



**B6505116**  
RAILTEC B, 9 modules, Vers. III  
PC (UL 94 V-0)  
light grey RAL 7035  
157x86x59mm



**B6505117**  
RAILTEC B, 9 modules, Vers. IV  
PC (UL 94 V-0)  
light grey RAL 7035  
157x86x59mm



**B6505118**  
RAILTEC B, 9 modules, Vers. IV  
PC (UL 94 V-0)  
light grey RAL 7035  
157x86x59mm



**B6505119**  
RAILTEC B, 9 modules, Vers. V  
PC (UL 94 V-0)  
light grey RAL 7035  
157x86x59mm



**B6505121**  
RAILTEC B, 9 modules, Vers. VI  
PC (UL 94 V-0)  
light grey RAL 7035  
157x90x58mm



**B6505223**  
RAILTEC B, 9 modules, Vers. III  
low profile  
PC (UL 94 V-0)  
light grey RAL 7035  
157x86x31,25mm



**B6505229**  
RAILTEC B, 9 modules, Vers.  
low profile  
PC (UL 94 V-0)  
light grey RAL 7035  
157,5x89,6x31,25mm



**B6506110**  
RAILTEC B, 12 modules, Vers. V  
PC (UL 94 V-0)  
light grey RAL 7035  
210x90x58mm



**B6506111**  
RAILTEC B, 12 modules, Vers. I  
PC (UL 94 V-0)  
light grey RAL 7035  
210x90x58mm



**B6506112**  
RAILTEC B, 12 modules, Vers. II  
PC (UL 94 V-0)  
light grey RAL 7035  
210x90x58mm



**B6506113**  
RAILTEC B, 12 modules, Vers.  
III  
PC (UL 94 V-0)  
light grey RAL 7035  
210x90x58mm



**B6506114**  
RAILTEC B, 12 modules, Vers. I  
PC (UL 94 V-0)  
light grey RAL 7035  
210x90x58mm



**B6506115**  
RAILTEC B, 12 modules, Vers. II  
PC (UL 94 V-0)  
light grey RAL 7035  
210x90x58mm



**B6506116**  
RAILTEC B, 12 modules, Vers.  
III  
PC (UL 94 V-0)  
light grey RAL 7035  
210x90x58mm



**B6506117**  
RAILTEC B, 12 modules, Vers.  
IV  
PC (UL 94 V-0)  
light grey RAL 7035  
210x90x58mm



**B6506118**  
RAILTEC B, 12 modules, Vers.  
IV  
PC (UL 94 V-0)  
light grey RAL 7035  
210x90x58mm

# RAILTEC B



**B6506119**  
RAILTEC B, 12 modules, Vers. V  
PC (UL 94 V-0)  
light grey RAL 7035  
210x90x58mm



**B6506121**  
RAILTEC B, 12 modules, Vers.  
VI  
PC (UL 94 V-0)  
light grey RAL 7035  
210x90x58mm



**B6511111**  
RAILTEC B, 2 modules, Vers. XI  
PC (UL 94 V-0)  
light grey RAL 7035  
35x86x58mm



**B6511112**  
RAILTEC B, 2 modules, Vers. XII  
PC (UL 94 V-0)  
light grey RAL 7035  
35x86x58mm



**B6511113**  
RAILTEC B, 2 modules, Vers.  
XIII  
PC (UL 94 V-0)  
light grey RAL 7035  
35x86x58mm



**B6513111**  
RAILTEC B, 4 modules, Vers. XI  
PC (UL 94 V-0)  
light grey RAL 7035  
70x86x58mm



**B6513112**  
RAILTEC B, 4 modules, Vers. XII  
PC (UL 94 V-0)  
light grey RAL 7035  
70x86x58mm



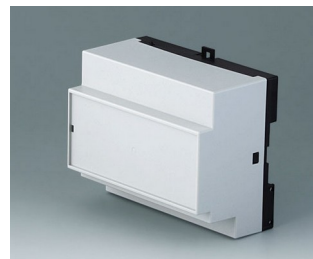
**B6513113**  
RAILTEC B, 4 modules, Vers.  
XIII  
PC (UL 94 V-0)  
light grey RAL 7035  
70x86x58mm



**B6514111**  
RAILTEC B, 6 modules, Vers. XI  
PC (UL 94 V-0)  
light grey RAL 7035  
105x86x59mm



**B6514112**  
RAILTEC B, 6 modules, Vers. XII  
PC (UL 94 V-0)  
light grey RAL 7035  
105x86x59mm



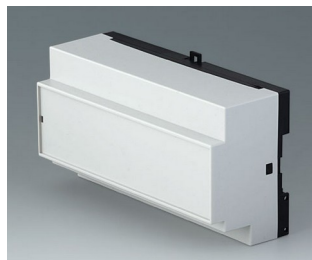
**B6514113**  
RAILTEC B, 6 modules, Vers.  
XIII  
PC (UL 94 V-0)  
light grey RAL 7035  
105x86x59mm



**B6515111**  
RAILTEC B, 9 modules, Vers. XI  
PC (UL 94 V-0)  
light grey RAL 7035  
157x86x59mm



**B6515112**  
RAILTEC B, 9 modules, Vers. XII  
PC (UL 94 V-0)  
light grey RAL 7035  
157x86x59mm



**B6515113**  
RAILTEC B, 9 modules, Vers.  
XIII  
PC (UL 94 V-0)  
light grey RAL 7035  
157x86x59mm



**B6522101**  
RAILTEC BP, M22, with closed  
side panels  
PC (UL 94 V-0)  
light grey RAL 7035  
95x23x113mm



**B6522102**  
RAILTEC BP, M22, closed/with  
ventilation slots  
PC (UL 94 V-0)  
light grey RAL 7035  
95x23x113mm

# RAILTEC B



**B6522103**  
RAILTEC BP, M22, with  
ventilation slots  
PC (UL 94 V-0)  
light grey RAL 7035  
95x23x113mm

## Accessory "protection"



**B6622101**  
Hinged cover  
transparent

## Accessory "wall/holder"



**B6600334**  
Wall suspension elements  
PPO (UL 94 V-0)  
black

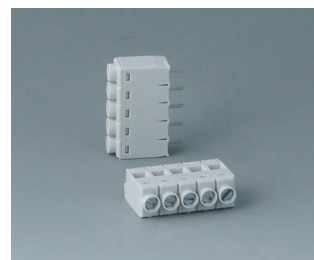
## Accessory "terminals"



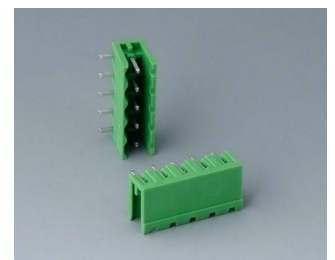
**B6600111**  
Terminal block, block 5.0  
PA 68 (UL 94 V-0)  
light grey



**B6600222**  
Plug header, block 5.08  
PA 68 (UL 94 V-0)



**B6601111**  
Terminal block, block 5.0  
PA 68 (UL 94 V-0)

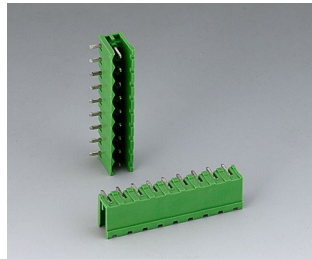


**B6601222**  
Plug header, block 5.08  
PA 6 (UL 94 V-0)

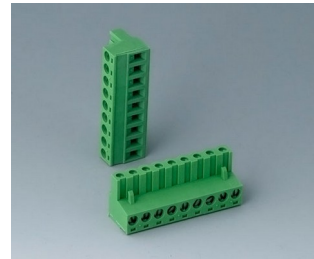
# RAILTEC B



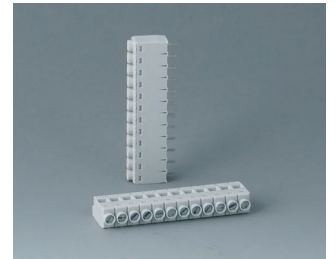
**B6601223**  
Plug header, block 5.08  
PA 6 (UL 94 V-0)



**B6602222**  
Plug header, block 5.08  
PA 6 (UL 94 V-0)



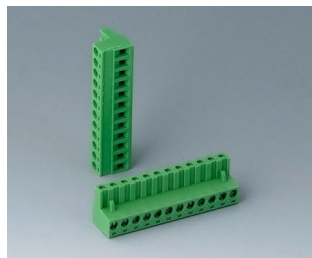
**B6602223**  
Plug header, block 5.08  
PA 6 (UL 94 V-0)



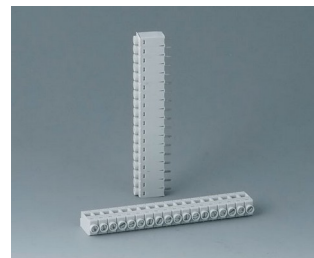
**B6603111**  
Terminal block, block 5.0  
PA 68 (UL 94 V-0)



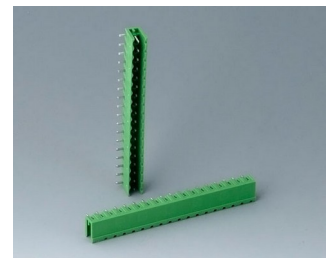
**B6603222**  
Plug header, block 5.08  
PA 6 (UL 94 V-0)



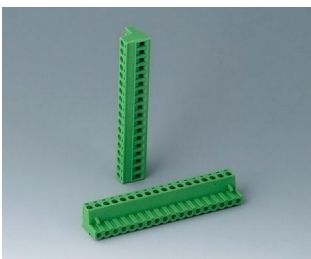
**B6603223**  
Plug header, block 5.08  
PA 6 (UL 94 V-0)



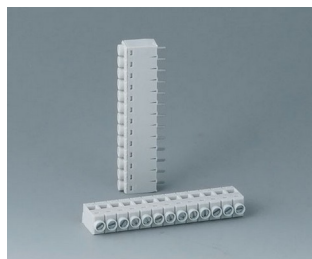
**B6604111**  
Terminal block, block 5.0  
PA 68 (UL 94 V-0)



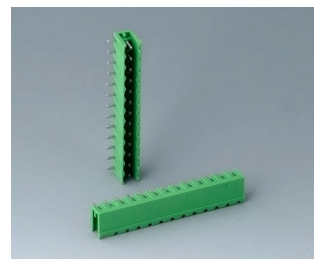
**B6604222**  
Plug header, block 5.08  
PA 68 (UL 94 V-0)



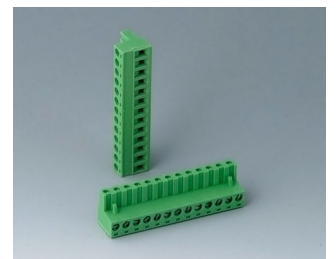
**B6604223**  
Plug header, block 5.08  
PA 68 (UL 94 V-0)



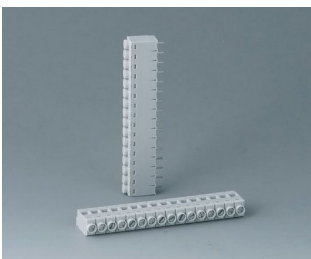
**B6605111**  
Terminal block, block 5.0  
PA 68 (UL 94 V-0)



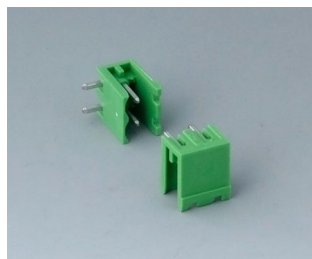
**B6605222**  
Plug header, block 5.08  
PA 6 (UL 94 V-0)



**B6605223**  
Plug header, block 5.08  
PA 6 (UL 94 V-0)



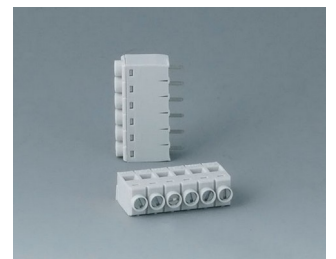
**B6606111**  
Terminal block, block 5.0  
PA 68 (UL 94 V-0)



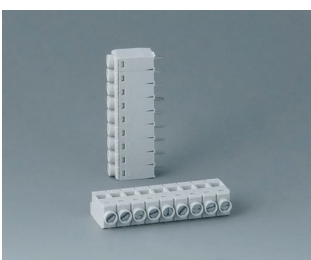
**B6606222**  
Plug header, block 5.08  
PA 6 (UL 94 V-0)



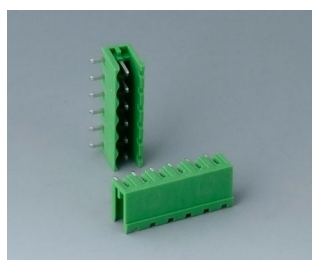
**B6606223**  
Plug header, block 5.08  
PA 6 (UL 94 V-0)



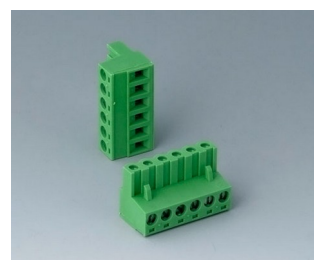
**B6607111**  
Terminal block, block 5.0  
PA 68 (UL 94 V-0)



**B6608111**  
Terminal block, block 5.0  
PA 68 (UL 94 V-0)



**B6608222**  
Plug header, block 5.08  
PA 68 (UL 94 V-0)



**B6608223**  
Plug header, block 5.08  
PA 68 (UL 94 V-0)

# RAILTEC B

## Accessory "terminal guards"



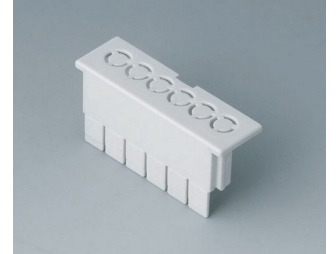
**B6607140**  
Terminal guards, flat  
PC (UL 94 V-0)  
light grey



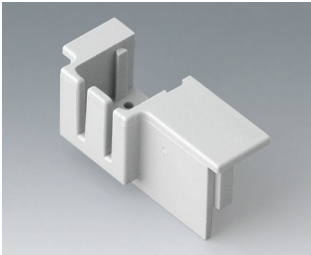
**B6607141**  
Terminal guards, flat  
PC (UL 94 V-0)  
light grey



**B6607142**  
Terminal guards, flat  
PC (UL 94 V-0)  
light grey



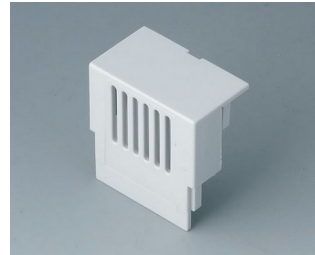
**B6607143**  
Terminal guards, flat  
PC (UL 94 V-0)  
light grey



**B6607145**  
KNX Cover, flat  
PC (UL 94 V-0)  
light grey



**B6607160**  
Terminal guards, high  
PC (UL 94 V-0)  
light grey



**B6607161**  
Terminal guards, high  
PC (UL 94 V-0)  
light grey



**B6607162**  
Terminal guards, high  
PC (UL 94 V-0)  
light grey



**B6607163**  
Terminal guards, high  
PC (UL 94 V-0)  
light grey



**B6607191**  
Partition plate  
PC (UL 94 V-0)  
light grey



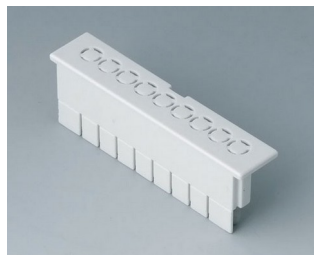
**B6608140**  
Terminal guards, flat  
PC (UL 94 V-0)  
light grey



**B6608141**  
Terminal guards, flat  
PC (UL 94 V-0)  
light grey



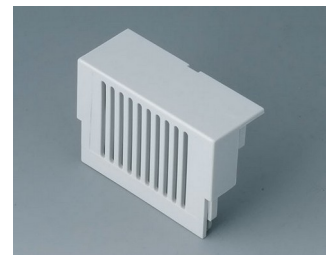
**B6608142**  
Terminal guards, flat  
PC (UL 94 V-0)  
light grey



**B6608143**  
Terminal guards, flat  
PC (UL 94 V-0)  
light grey



**B6608160**  
Terminal guards, high  
PC (UL 94 V-0)  
light grey



**B6608161**  
Terminal guards, high  
PC (UL 94 V-0)  
light grey

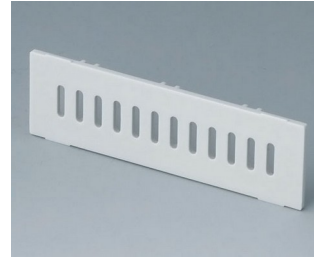
# RAILTEC B



**B6608162**  
Terminal guards, high  
PC (UL 94 V-0)  
light grey



**B6608163**  
Terminal guards, high  
PC (UL 94 V-0)  
light grey



**B6608191**  
Partition plate  
PC (UL 94 V-0)  
light grey

## Accessory "screws"



**A0305031**  
Self-tapping screws 2.5 x 6 mm  
(PZ1)

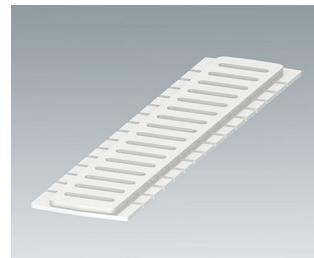
## Accessory



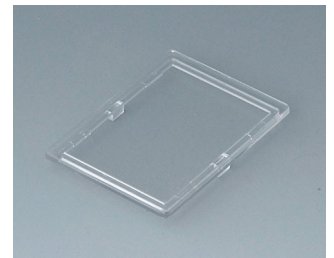
**B6522801**  
Front panel  
PC (UL 94 V-0)  
light grey RAL 7035



**B6522811**  
Side panel closed  
PC (UL 94 V-0)  
light grey RAL 7035



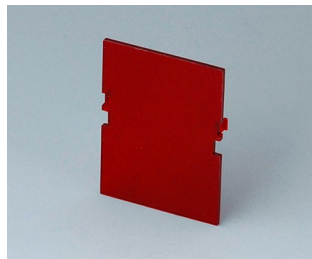
**B6522821**  
Side panel with ventilation slots  
PC (UL 94 V-0)  
light grey RAL 7035



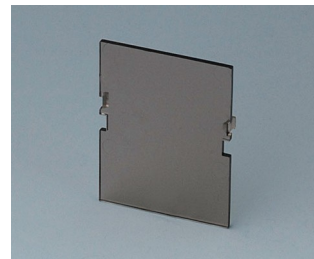
**B6601100**  
Lid, 2 modules  
PC (UL 94 V-0)  
transparent



**B6601180**  
Front panel, 2 modules, Vers. VI  
PC (UL 94 V-0)  
light grey  
32x42mm



**B6601480**  
Front panel, 2 modules, Vers. VI  
PC (UL 94 V-0)  
red transparent  
32x42mm



**B6601580**  
Front panel, 2 modules, Vers. VI  
PC (UL 94 V-0)  
smoked glass  
32x42mm



**B6602100**  
Lid, 3 modules  
PC (UL 94 V-0)  
transparent

# RAILTEC B



**B6602180**  
Front panel, 3 modules, Vers. VI  
PC (UL 94 V-0)  
light grey  
49x42mm



**B6602480**  
Front panel, 3 modules, Vers. VI  
PC (UL 94 V-0)  
red transparent  
49x42mm



**B6602580**  
Front panel, 3 modules, Vers. VI  
PC (UL 94 V-0)  
smoked glass  
42x49mm



**B6603100**  
Lid, 4 modules  
PC (UL 94 V-0)  
transparent



**B6603180**  
Front panel, 4 modules, Vers. VI  
PC (UL 94 V-0)  
light grey  
67x42mm



**B6603480**  
Front panel, 4 modules, Vers. VI  
PC (UL 94 V-0)  
red transparent  
67x42mm



**B6603580**  
Front panel, 4 modules, Vers. VI  
PC (UL 94 V-0)  
smoked glass  
67x42mm



**B6604100**  
Lid, 6 modules  
PC (UL 94 V-0)  
transparent



**B6604180**  
Front panel, 6 modules, Vers. VI  
PC (UL 94 V-0)  
light grey  
102x42mm



**B6604480**  
Front panel, 6 modules, Vers. VI  
PC (UL 94 V-0)  
red transparent  
102x42mm



**B6604580**  
Front panel, 6 modules, Vers. VI  
PC (UL 94 V-0)  
smoked glass  
102x42mm



**B6605100**  
Lid, 9 modules  
PC (UL 94 V-0)  
transparent



**B6605180**  
Front panel, 9 modules, Vers. VI  
PC (UL 94 V-0)  
light grey  
155x42mm



**B6605480**  
Front panel, 9 modules, Vers. VI  
PC (UL 94 V-0)  
red transparent  
155x42mm



**B6605580**  
Front panel, 9 modules, Vers. VI  
PC (UL 94 V-0)  
smoked glass  
155x42mm



**B6606100**  
Lid, 12 modules  
PC (UL 94 V-0)  
transparent

## RAILTEC B



**B6606180**  
Front panel, 12 modules, Vers.  
VI  
PC (UL 94 V-0)  
light grey  
206x42mm



**B6606480**  
Front panel, 12 modules, Vers.  
VI  
PC (UL 94 V-0)  
red transparent  
206x42mm



**B6606580**  
Front panel, 12 modules, Vers.  
VI  
PC (UL 94 V-0)  
smoked glass  
206x42mm

Nos reservamos el derecho a realizar modificaciones técnicas. © OKW Gehäusesysteme, Buchen (Alemania).