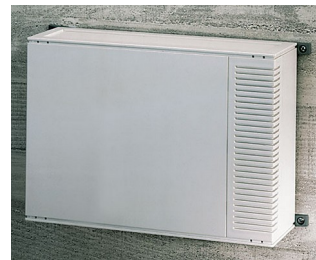


MEDITEC

Cajas plásticas de gran formato

La familia de cajas MEDITEC se caracterizan por su diseño moderno, con estilo y funcional, ideal para el alojamiento de equipamientos electrónicos contemporáneos de alta calidad.

- Diseño elegante y funcional.
- Uso versátil para aplicaciones móviles, de pared y de sobremesa.
- Construcción robusta gracias a la trama de nervios.
- Fácil de ensamblar.
- 4 tamaños, armonizados con los formatos de Eurocard simple, doble y alargado.
- 2 alturas estándar; escalable mediante paneles laterales.
- Frontal inclinado de forma ergonómica; si también se utiliza un panel lateral, pida la pieza intermedia para cerrar la abertura bajo el panel de control de forma óptima.
- Paneles frontales y posteriores de plástico con la misma calidad de superficie, fáciles de mecanizar.
- Protecciones correderas con o sin ventilación, en el color de la caja o color verde laguna, para esconder los tornillos de fijación; otras opciones de color bajo petición.
- Incluye 4 pies antideslizantes atornillables.
- Orejetas de fijación para montaje en la pared opcionales.
- Modelos con asa; para aplicaciones portátiles, en caso necesario, el ajuste mecánico permite al usuario posicionarlo en el ángulo adecuado, en intervalos de 30°.
- Elementos de fijación interna para PCBs y otros componentes.
- Cabezales de fijación para placas de circuitos y piezas de montaje.



MEDITEC

Aplicaciones

Tecnologías de medicina y laboratorio, salud, control de procesos, tecnologías de medición y regulación, periféricos informáticos, módems e interfaces, tecnologías de comunicación y redes, recopilación de datos, ecc.



amicOx pulse oximeter



Dry milling unit for foot care



NeurOne Tesla EEG System



Pneumatic Lithotripter System

Modificaciones específicas del cliente

¿Qué necesita en su producto personalizado? En caso necesario, le suministramos las cajas y botones giratorios listas para el montaje con todas las modificaciones y acabados precisos.

Opciones de productos para Meditec



Mecanizado



Lacado



Impresión



Inscripción láser



Materiales especiales

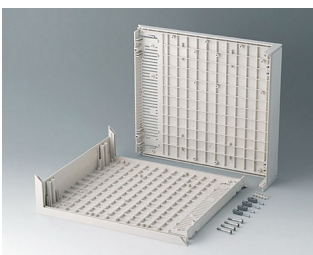


Compatibilidad
electromagnética

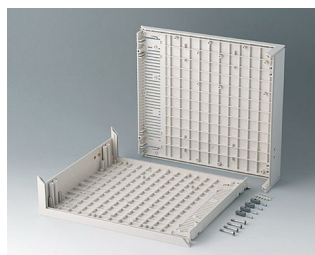


Confección y montaje

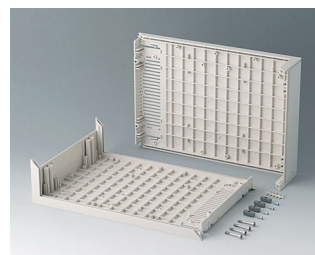
Versiones



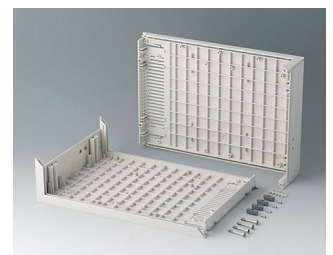
B201007
L-shells D 220, without holes
ABS (UL 94 HB)
off-white RAL 9002
290x260x74mm



B201017
L-shells D 220, with holes for
handle
ABS (UL 94 HB)
off-white RAL 9002
290x260x74mm

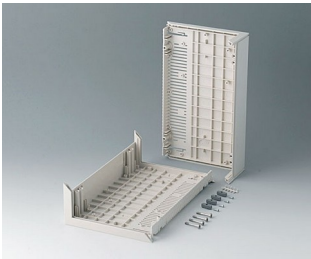


B201107
L-shells D 160, without holes
ABS (UL 94 HB)
off-white RAL 9002
290x200x74mm

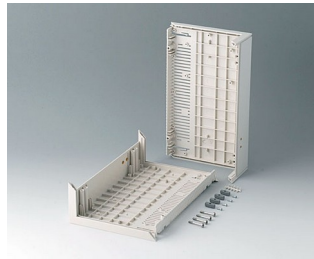


B201117
L-shells D 160, with holes for
handle
ABS (UL 94 HB)
off-white RAL 9002
290x200x74mm

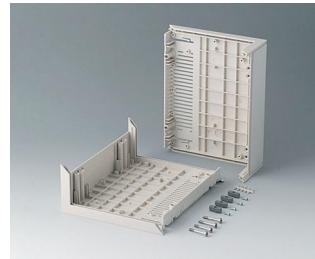
MEDITEC



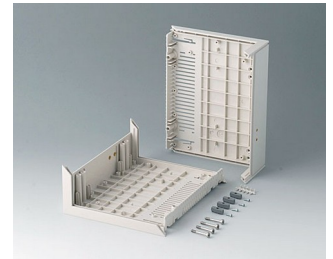
B2012007
L-shells E 220, without holes
ABS (UL 94 HB)
off-white RAL 9002
160x260x74mm



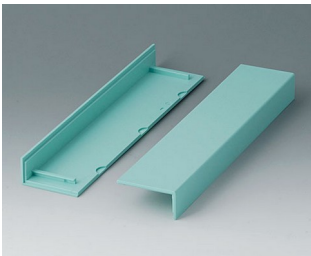
B2012107
L-shells E 220, with holes for
handle
ABS (UL 94 HB)
off-white RAL 9002
160x260x74mm



B2013007
L-shells E 160, without holes
ABS (UL 94 HB)
off-white RAL 9002
160x200x74mm



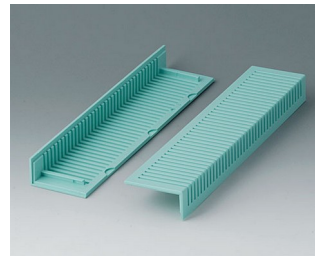
B2013107
L-shells E 160, with holes for
handle
ABS (UL 94 HB)
off-white RAL 9002
160x200x74mm



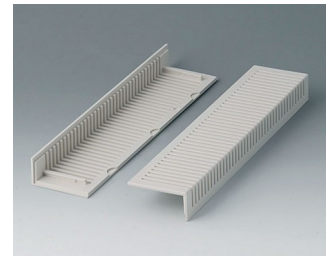
B2020005
Side trims 220, without
ventilation
ABS
lagoon



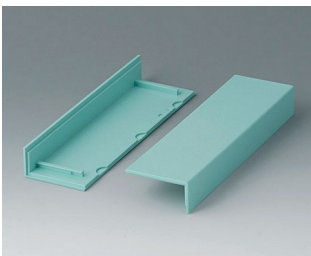
B2020007
Side trims 220, without
ventilation
ABS (UL 94 HB)
off-white RAL 9002



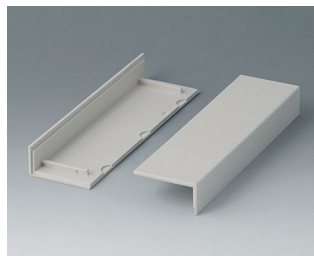
B2021005
Side trims 220, with ventilation
ABS
lagoon



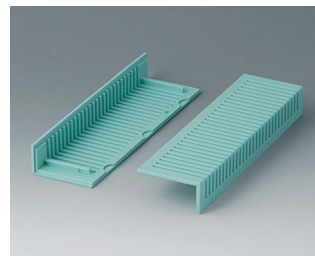
B2021007
Side trims 220, with ventilation
ABS (UL 94 HB)
off-white RAL 9002



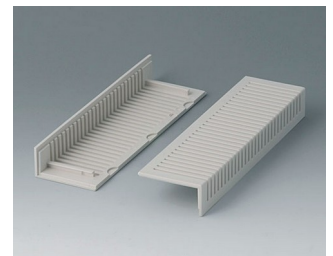
B2022005
Side trims 160, without
ventilation
ABS
lagoon



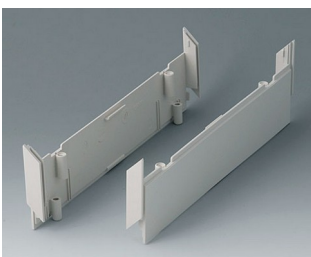
B2022007
Side trims 160, without
ventilation
ABS (UL 94 HB)
off-white RAL 9002



B2023005
Side trims 160, with ventilation
ABS
lagoon



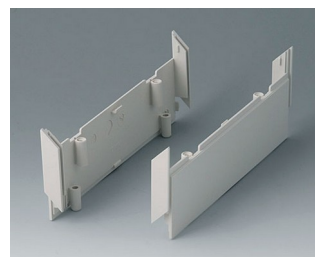
B2023007
Side trims 160, with ventilation
ABS (UL 94 HB)
off-white RAL 9002



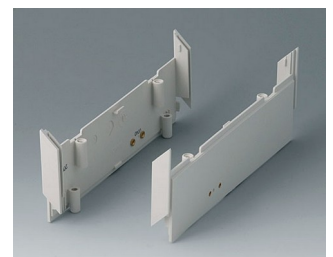
B2030007
Side panels 220, without holes
ABS (UL 94 HB)
off-white RAL 9002



B2030107
Side panels 220, with holes for
handle
ABS (UL 94 HB)
off-white RAL 9002



B2031007
Side panels 160, without holes
ABS (UL 94 HB)
off-white RAL 9002



B2031107
Side panels 160, with holes for
handle
ABS (UL 94 HB)
off-white RAL 9002

MEDITEC



B2116507
Handle bar E
PA 6
off-white RAL 9002



B2129507
Handle bar D
PA 6
off-white RAL 9002



B2210005
MEDITEC D 220, without handle
bar
ABS (UL 94 HB)
off-white RAL 9002
290x260x74mm
IP 40



B2210007
MEDITEC D 220, without handle
bar
ABS (UL 94 HB)
off-white RAL 9002
290x260x74mm
IP 40



B2210015
MEDITEC D 220, without handle
bar
ABS (UL 94 HB)
off-white RAL 9002
290x260x74mm
IP 40



B2210017
MEDITEC D 220, without handle
bar
ABS (UL 94 HB)
off-white RAL 9002
290x260x74mm
IP 40



B2210105
MEDITEC D 220, with handle
bar
ABS (UL 94 HB)
off-white RAL 9002
290x260x74mm
IP 40



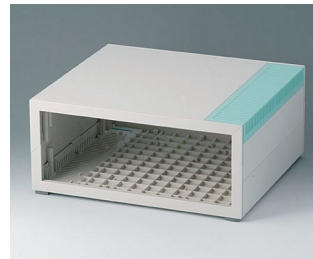
B2210107
MEDITEC D 220, with handle
bar
ABS (UL 94 HB)
off-white RAL 9002
290x260x74mm
IP 40



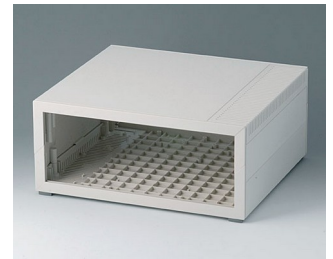
B2210115
MEDITEC D 220, with handle
bar
ABS (UL 94 HB)
off-white RAL 9002
290x260x74mm
IP 40



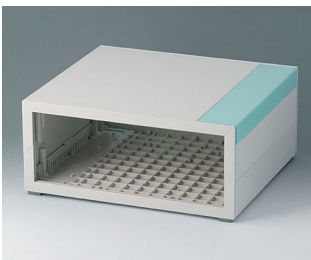
B2210117
MEDITEC D 220, with handle
bar
ABS (UL 94 HB)
off-white RAL 9002
290x260x74mm
IP 40



B2210205
MEDITEC D 220, without handle
bar
ABS (UL 94 HB)
off-white RAL 9002
290x260x124mm
IP 40



B2210207
MEDITEC D 220, without handle
bar
ABS (UL 94 HB)
off-white RAL 9002
290x260x124mm
IP 40



B2210215
MEDITEC D 220, without handle
bar
ABS (UL 94 HB)
off-white RAL 9002
290x260x124mm
IP 40



B2210217
MEDITEC D 220, without handle
bar
ABS (UL 94 HB)
off-white RAL 9002
290x260x124mm
IP 40



B2210305
MEDITEC D 220, with handle
bar
ABS (UL 94 HB)
off-white RAL 9002
290x260x124mm
IP 40



B2210307
MEDITEC D 220, with handle
bar
ABS (UL 94 HB)
off-white RAL 9002
290x260x124mm
IP 40

MEDITEC



B2210315
MEDITEC D 220, with handle bar
ABS (UL 94 HB)
off-white RAL 9002
290x260x124mm
IP 40



B2210317
MEDITEC D 220, with handle bar
ABS (UL 94 HB)
off-white RAL 9002
290x260x124mm
IP 40



B2211005
MEDITEC D 160, without handle bar
ABS (UL 94 HB)
off-white RAL 9002
290x200x74mm
IP 40



B2211007
MEDITEC D 160, without handle bar
ABS (UL 94 HB)
off-white RAL 9002
290x200x74mm
IP 40



B2211015
MEDITEC D 160, without handle bar
ABS (UL 94 HB)
off-white RAL 9002
290x200x74mm
IP 40



B2211017
MEDITEC D 160, without handle bar
ABS (UL 94 HB)
off-white RAL 9002
290x200x74mm
IP 40



B2211105
MEDITEC D 160, with handle bar
ABS (UL 94 HB)
off-white RAL 9002
290x200x74mm
IP 40



B2211107
MEDITEC D 160, with handle bar
ABS (UL 94 HB)
off-white RAL 9002
290x200x74mm
IP 40



B2211115
MEDITEC D 160, with handle bar
ABS (UL 94 HB)
off-white RAL 9002
290x200x74mm
IP 40



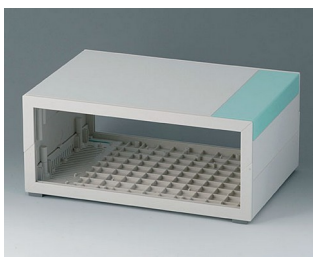
B2211117
MEDITEC D 160, with handle bar
ABS (UL 94 HB)
off-white RAL 9002
290x200x74mm
IP 40



B2211205
MEDITEC D 160, without handle bar
ABS (UL 94 HB)
off-white RAL 9002
290x200x124mm
IP 40



B2211207
MEDITEC D 160, without handle bar
ABS (UL 94 HB)
off-white RAL 9002
290x200x124mm
IP 40



B2211215
MEDITEC D 160, without handle bar
ABS (UL 94 HB)
off-white RAL 9002
290x200x124mm
IP 40



B2211217
MEDITEC D 160, without handle bar
ABS (UL 94 HB)
off-white RAL 9002
290x200x124mm
IP 40



B2211305
MEDITEC D 160, with handle bar
ABS (UL 94 HB)
off-white RAL 9002
290x200x124mm
IP 40



B2211307
MEDITEC D 160, with handle bar
ABS (UL 94 HB)
off-white RAL 9002
290x200x124mm
IP 40

MEDITEC



B2211315
MEDITEC D 160, with handle bar
ABS (UL 94 HB)
off-white RAL 9002
290x200x124mm
IP 40



B2211317
MEDITEC D 160, with handle bar
ABS (UL 94 HB)
off-white RAL 9002
290x200x124mm
IP 40



B2212005
MEDITEC E 220, without handle bar
ABS (UL 94 HB)
off-white RAL 9002
160x260x74mm
IP 40



B2212007
MEDITEC E 220, without handle bar
ABS (UL 94 HB)
off-white RAL 9002
160x260x74mm
IP 40



B2212015
MEDITEC E 220, without handle bar
ABS (UL 94 HB)
off-white RAL 9002
160x260x74mm
IP 40



B2212017
MEDITEC E 220, without handle bar
ABS (UL 94 HB)
off-white RAL 9002
160x260x74mm
IP 40



B2212105
MEDITEC E 220, with handle bar
ABS (UL 94 HB)
off-white RAL 9002
160x260x74mm
IP 40



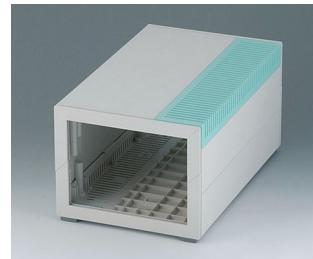
B2212107
MEDITEC E 220, with handle bar
ABS (UL 94 HB)
off-white RAL 9002
160x260x74mm
IP 40



B2212115
MEDITEC E 220, with handle bar
ABS (UL 94 HB)
off-white RAL 9002
160x260x74mm
IP 40



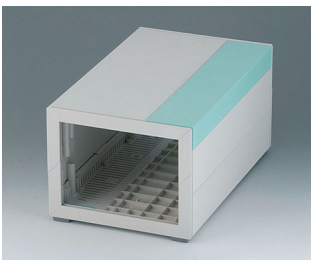
B2212117
MEDITEC E 220, with handle bar
ABS (UL 94 HB)
off-white RAL 9002
160x260x74mm
IP 40



B2212205
MEDITEC E 220, without handle bar
ABS (UL 94 HB)
off-white RAL 9002
160x260x124mm
IP 40



B2212207
MEDITEC E 220, without handle bar
ABS (UL 94 HB)
off-white RAL 9002
160x260x124mm
IP 40



B2212215
MEDITEC E 220, without handle bar
ABS (UL 94 HB)
off-white RAL 9002
160x260x124mm
IP 40



B2212217
MEDITEC E 220, without handle bar
ABS (UL 94 HB)
off-white RAL 9002
160x260x124mm
IP 40



B2212305
MEDITEC E 220, with handle bar
ABS (UL 94 HB)
off-white RAL 9002
160x260x124mm
IP 40



B2212307
MEDITEC E 220, with handle bar
ABS (UL 94 HB)
off-white RAL 9002
160x260x124mm
IP 40

MEDITEC



B2212315
MEDITEC E 220, with handle bar
ABS (UL 94 HB)
off-white RAL 9002
160x260x124mm
IP 40



B2212317
MEDITEC E 220, with handle bar
ABS (UL 94 HB)
off-white RAL 9002
160x260x124mm
IP 40



B2213005
MEDITEC E 160, without handle bar
ABS (UL 94 HB)
off-white RAL 9002
160x200x74mm
IP 40



B2213007
MEDITEC E 160, without handle bar
ABS (UL 94 HB)
off-white RAL 9002
160x200x74mm
IP 40



B2213015
MEDITEC E 160, without handle bar
ABS (UL 94 HB)
off-white RAL 9002
160x200x74mm
IP 40



B2213017
MEDITEC E 160, without handle bar
ABS (UL 94 HB)
off-white RAL 9002
160x200x74mm
IP 40



B2213105
MEDITEC E 160, with handle bar
ABS (UL 94 HB)
off-white RAL 9002
160x200x74mm
IP 40



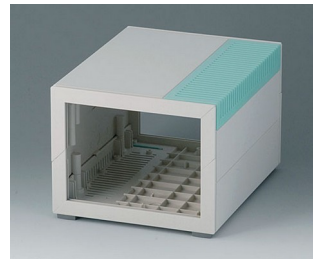
B2213107
MEDITEC E 160, with handle bar
ABS (UL 94 HB)
off-white RAL 9002
160x200x74mm
IP 40



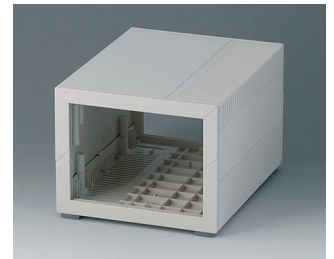
B2213115
MEDITEC E 160, with handle bar
ABS (UL 94 HB)
off-white RAL 9002
160x200x74mm
IP 40



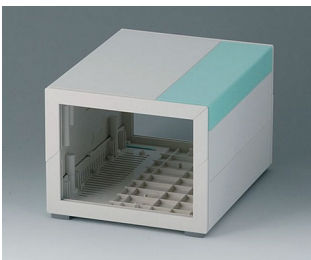
B2213117
MEDITEC E 160, with handle bar
ABS (UL 94 HB)
off-white RAL 9002
160x200x74mm
IP 40



B2213205
MEDITEC E 160, without handle bar
ABS (UL 94 HB)
off-white RAL 9002
160x200x124mm
IP 40



B2213207
MEDITEC E 160, without handle bar
ABS (UL 94 HB)
off-white RAL 9002
160x200x124mm
IP 40



B2213215
MEDITEC E 160, without handle bar
ABS (UL 94 HB)
off-white RAL 9002
160x200x124mm
IP 40



B2213217
MEDITEC E 160, without handle bar
ABS (UL 94 HB)
off-white RAL 9002
160x200x124mm
IP 40



B2213305
MEDITEC E 160, with handle bar
ABS (UL 94 HB)
off-white RAL 9002
160x200x124mm
IP 40



B2213307
MEDITEC E 160, with handle bar
ABS (UL 94 HB)
off-white RAL 9002
160x200x124mm
IP 40

MEDITEC

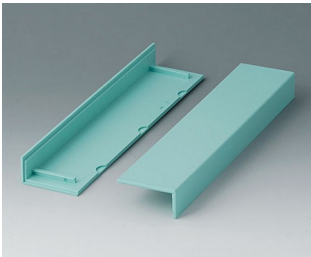


B2213315
MEDITEC E 160, with handle
bar
ABS (UL 94 HB)
off-white RAL 9002
160x200x124mm
IP 40



B2213317
MEDITEC E 160, with handle
bar
ABS (UL 94 HB)
off-white RAL 9002
160x200x124mm
IP 40

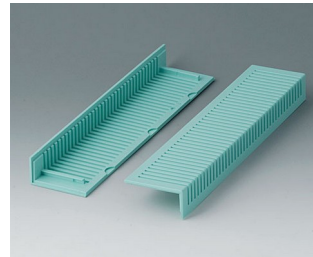
System components to complete



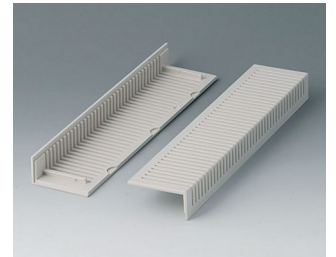
B2020005
Side trims 220, without
ventilation
ABS
lagoon



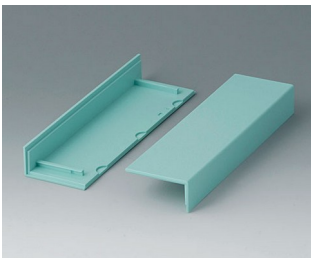
B2020007
Side trims 220, without
ventilation
ABS (UL 94 HB)
off-white RAL 9002



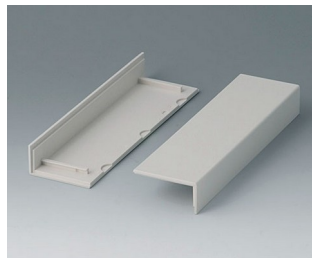
B2021005
Side trims 220, with ventilation
ABS
lagoon



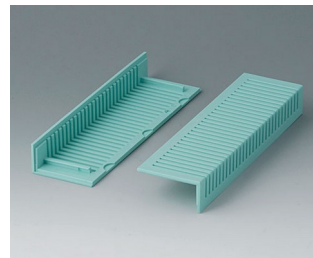
B2021007
Side trims 220, with ventilation
ABS (UL 94 HB)
off-white RAL 9002



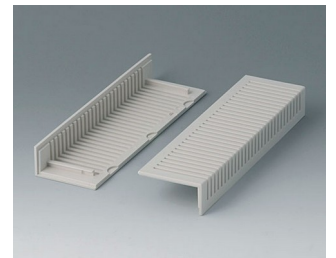
B2022005
Side trims 160, without
ventilation
ABS
lagoon



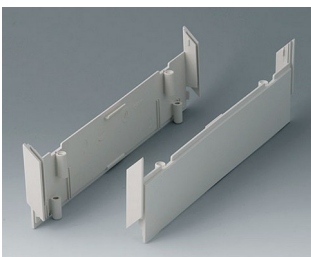
B2022007
Side trims 160, without
ventilation
ABS (UL 94 HB)
off-white RAL 9002



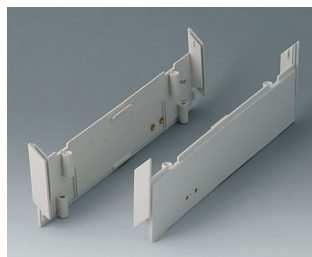
B2023005
Side trims 160, with ventilation
ABS
lagoon



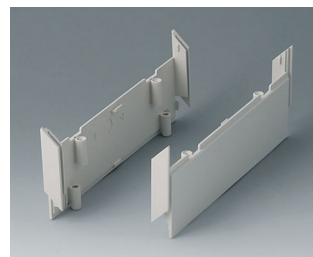
B2023007
Side trims 160, with ventilation
ABS (UL 94 HB)
off-white RAL 9002



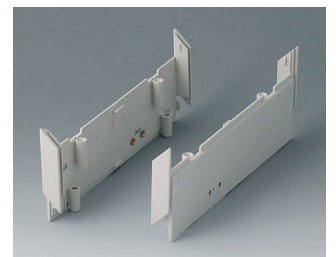
B2030007
Side panels 220, without holes
ABS (UL 94 HB)
off-white RAL 9002



B2030107
Side panels 220, with holes for
handle
ABS (UL 94 HB)
off-white RAL 9002



B2031007
Side panels 160, without holes
ABS (UL 94 HB)
off-white RAL 9002



B2031107
Side panels 160, with holes for
handle
ABS (UL 94 HB)
off-white RAL 9002

MEDITEC



B2116507
Handle bar E
PA 6
off-white RAL 9002



B2129507
Handle bar D
PA 6
off-white RAL 9002

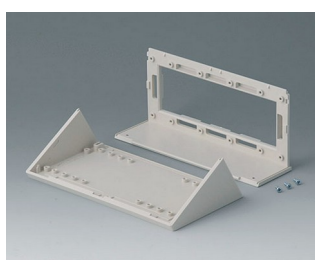


B2133012
Wall mounting brackets
PA 6
volcano

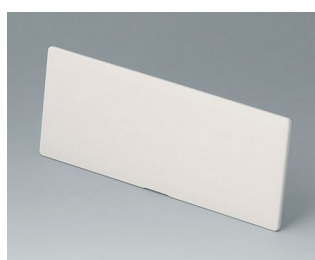


B2135017
Connectors
ABS (UL 94 HB)
off-white RAL 9002

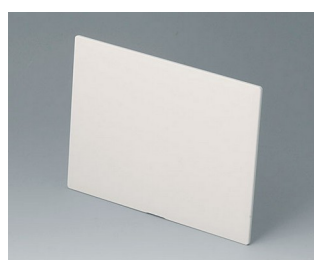
Accessory to complete



B2116007
Sloping control panel E
ABS (UL 94 HB)
off-white RAL 9002



B2116307
Front / rear panel E, flat
ABS (UL 94 HB)
off-white RAL 9002
141,6x55,6x3mm



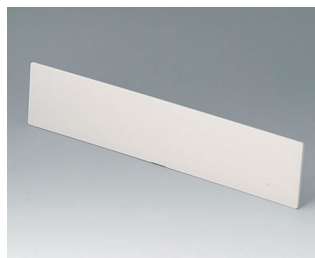
B2116407
Front / rear panel Z1
ABS (UL 94 HB)
off-white RAL 9002
141,6x105,6x3mm



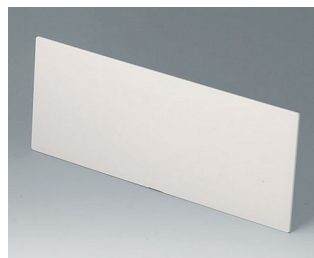
B2116707
Infill panel E
ABS (UL 94 HB)
off-white RAL 9002
142x55x5mm



B2129007
Sloping control panel D
ABS (UL 94 HB)
off-white RAL 9002



B2129307
Front / rear panel D, flat
ABS (UL 94 HB)
off-white RAL 9002
271,6x55,6x3mm



B2129407
Front / rear panel Z1
ABS (UL 94 HB)
off-white RAL 9002
271,6x105,6x3mm



B2129707
Infill panel D
ABS (UL 94 HB)
off-white RAL 9002
272x55x5mm

Accessory "wall/holder"



B2133012
Wall mounting brackets
PA 6
volcano



B2134012
Stacking elements
PA 6
volcano

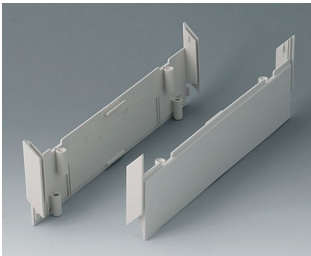
MEDITEC

Accessory "screws"

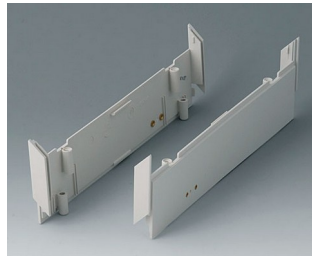


A9199008
Set of screws

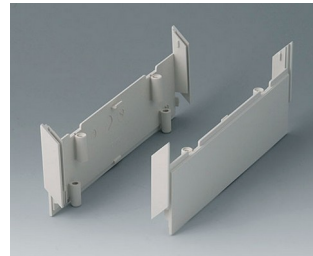
Accessory



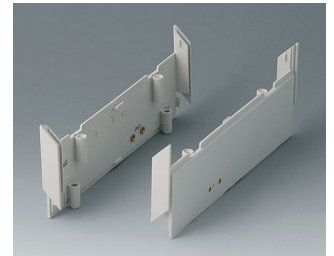
B2030007
Side panels 220, without holes
ABS (UL 94 HB)
off-white RAL 9002



B2030107
Side panels 220, with holes for
handle
ABS (UL 94 HB)
off-white RAL 9002



B2031007
Side panels 160, without holes
ABS (UL 94 HB)
off-white RAL 9002



B2031107
Side panels 160, with holes for
handle
ABS (UL 94 HB)
off-white RAL 9002



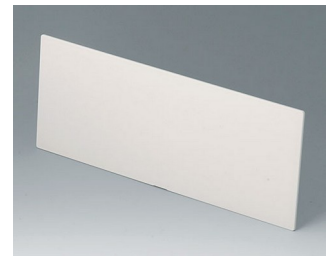
B2116407
Front / rear panel Z1
ABS (UL 94 HB)
off-white RAL 9002
141,6x105,6x3mm



B2116507
Handle bar E
PA 6
off-white RAL 9002



B2116707
Infill panel E
ABS (UL 94 HB)
off-white RAL 9002
142x55x5mm



B2129407
Front / rear panel Z1
ABS (UL 94 HB)
off-white RAL 9002
271,6x105,6x3mm



B2129507
Handle bar D
PA 6
off-white RAL 9002



B2129707
Infill panel D
ABS (UL 94 HB)
off-white RAL 9002
272x55x5mm



B2134012
Stacking elements
PA 6
volcano



B2135017
Connectors
ABS (UL 94 HB)
off-white RAL 9002