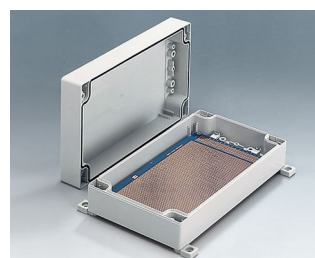
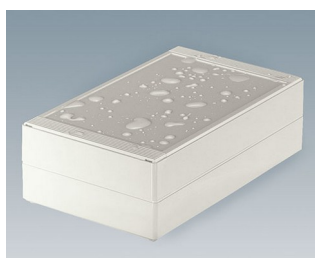
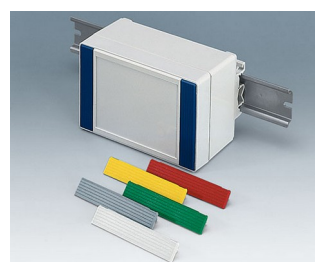
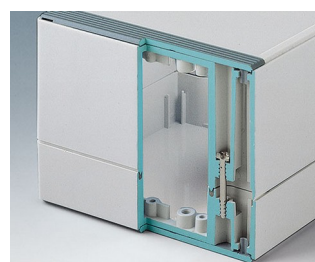


# ROBUST-BOX

## Cajas universales de categoría IP 66

Ambas partes de la ROBUST-BOX, están provistas de roscas premoldeadas. Como resultado, el usuario puede decidir si prefiere utilizar la parte plana o gruesa de la caja como parte inferior.

- Versátil, caja sellada con hasta 11 dimensiones básicas, diferentes alturas y 2 materiales estándar:
- ABS (UL 94 HB), aprobado como caja para montaje de bornes.
- PC (UL 94 HB), caja sólida y robusta para usos exigentes con elevada resistencia a la temperatura.
- Materiales permeables a las radiofrecuencias para cajas.
- Puede usarse como caja manual, de sobremesa o de pared, e incluso sobre raíles DIN (clips para carril DIN como accesorios).
- Fácil de montar; ambas partes de la caja se pueden utilizar como parte superior o inferior indistintamente.
- Ambas partes con panel de control rebajado para proteger el teclado de membrana, etc.
- Los anclajes de la tapa van fuera de la zona sellada; los tornillos de fijación son inoxidables y van anclados en la parte superior.
- Montaje directamente en la pared desde el interior o mediante escuadras de fijación externa.
- Tiras de colores para la codificación (alternativa a la versiones estándar de color gris claro)
- Cabezales de fijación para placas de circuitos impresos y piezas de montaje.
- Gran variedad de accesorios: pies, bisagra, elementos de sujeción para raíles DIN, soportes preensamblados para unidades PCB, etc.



# ROBUST-BOX

## Aplicaciones

Instalaciones eléctricas, como en tecnologías de calefacción, climatización y ventilación, dispositivos de mando y de control, construcción de maquinaria e instalaciones y tecnologías de seguridad. También puede emplearse en el sector de la electrónica, como, por ejemplo, en carcasas para interruptores, sistemas de mando, sensores de interiores, etc.



Fill level measurement in process technology



Heating Control



Humidity and temperature measuring unit



Measuring, regulating and metering unit for water quality



Portable metal detector



Robust monitoring systems



Sensor for air pollution



Stationary gas detection system

## Modificaciones específicas del cliente

¿Qué necesita en su producto personalizado? En caso necesario, le suministramos las cajas y botones giratorios listas para el montaje con todas las modificaciones y acabados precisos.

Opciones de productos para Robust-Box



Mecanizado



Lacado



Impresión



Inscripción láser



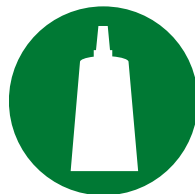
Láminas decorativas



Materiales especiales



Compatibilidad electromagnética



Confeción y montaje

# ROBUST-BOX

## Versiones



**C0080801**  
Case shell 80, with groove  
ABS (UL 94 HB)  
light grey RAL 7035  
80x80x20mm



**C0080802**  
Case shell 80, with groove  
PC (UL 94 HB)  
light grey RAL 7035  
80x80x20mm



**C0081201**  
Case shell 80, with groove  
ABS (UL 94 HB)  
light grey RAL 7035  
120x80x20mm



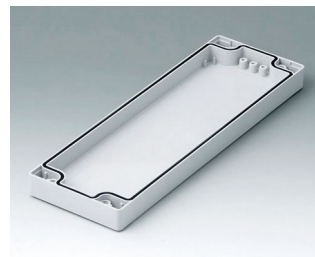
**C0081202**  
Case shell 80, with groove  
PC (UL 94 HB)  
light grey RAL 7035  
120x80x20mm



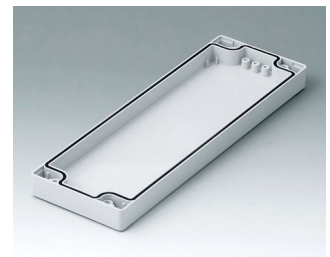
**C0081601**  
Case shell 80, with groove  
ABS (UL 94 HB)  
light grey RAL 7035  
160x80x20mm



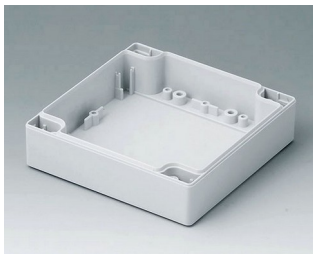
**C0081602**  
Case shell 80, with groove  
PC (UL 94 HB)  
light grey RAL 7035  
160x80x20mm



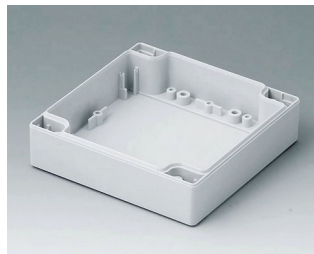
**C0082401**  
Case shell 80, with groove  
ABS (UL 94 HB)  
light grey RAL 7035  
240x80x20mm



**C0082402**  
Case shell 80, with groove  
PC (UL 94 HB)  
light grey RAL 7035  
240x80x20mm



**C0121201**  
Case shell 120, with tongue  
ABS (UL 94 HB)  
light grey RAL 7035  
120x120x30mm



**C0121202**  
Case shell 120, with tongue  
PC (UL 94 HB)  
light grey RAL 7035  
120x120x30mm



**C0122001**  
Case shell 120, with tongue  
ABS (UL 94 HB)  
light grey RAL 7035  
200x120x30mm



**C0122002**  
Case shell 120, with tongue  
PC (UL 94 HB)  
light grey RAL 7035  
200x120x30mm



**C0122401**  
Case shell 120, with tongue  
ABS (UL 94 HB)  
light grey RAL 7035  
240x120x30mm



**C0122402**  
Case shell 120, with tongue  
PC (UL 94 HB)  
light grey RAL 7035  
240x120x30mm



**C0161601**  
Case shell 160, with tongue  
ABS (UL 94 HB)  
light grey RAL 7035  
160x160x30mm



**C0161602**  
Case shell 160, with tongue  
PC (UL 94 HB)  
light grey RAL 7035  
160x160x30mm

# ROBUST-BOX



**C0162401**  
 Case shell 160, with tongue  
 ABS (UL 94 HB)  
 light grey RAL 7035  
 240x160x30mm



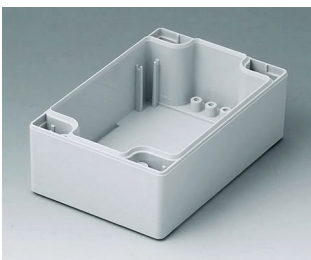
**C0162402**  
 Case shell 160, with tongue  
 PC (UL 94 HB)  
 light grey RAL 7035  
 240x160x30mm



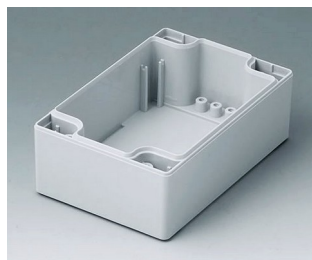
**C1080801**  
 Case shell 80, with tongue  
 ABS (UL 94 HB)  
 light grey RAL 7035  
 80x80x40mm



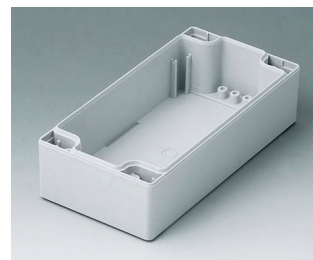
**C1080802**  
 Case shell 80, with tongue  
 PC (UL 94 HB)  
 light grey RAL 7035  
 80x80x40mm



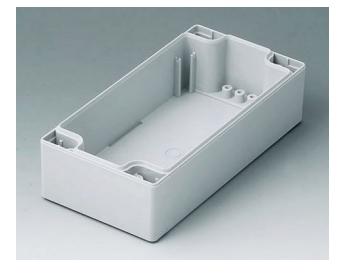
**C1081201**  
 Case shell 80, with tongue  
 ABS (UL 94 HB)  
 light grey RAL 7035  
 120x80x40mm



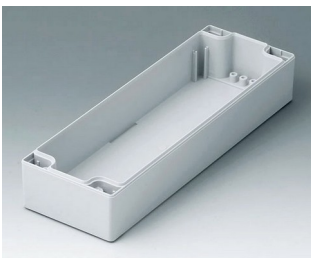
**C1081202**  
 Case shell 80, with tongue  
 PC (UL 94 HB)  
 light grey RAL 7035  
 120x80x40mm



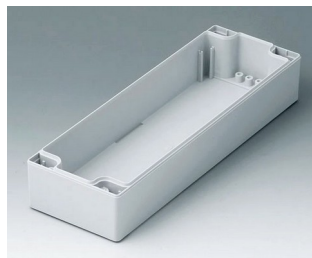
**C1081601**  
 Case shell 80, with tongue  
 ABS (UL 94 HB)  
 light grey RAL 7035  
 160x80x40mm



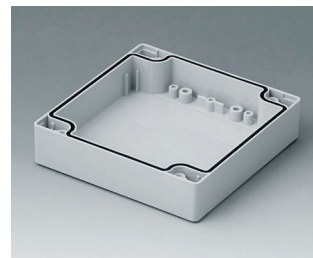
**C1081602**  
 Case shell 80, with tongue  
 PC (UL 94 HB)  
 light grey RAL 7035  
 160x80x40mm



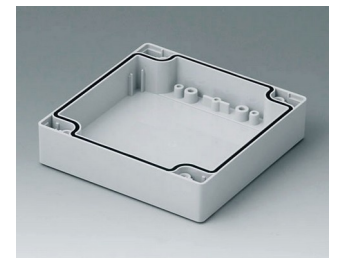
**C1082401**  
 Case shell 80, with tongue  
 ABS (UL 94 HB)  
 light grey RAL 7035  
 240x80x40mm



**C1082402**  
 Case shell 80, with tongue  
 PC (UL 94 HB)  
 light grey RAL 7035  
 240x80x40mm



**C1121201**  
 Case shell 120, with groove  
 ABS (UL 94 HB)  
 light grey RAL 7035  
 120x120x30mm



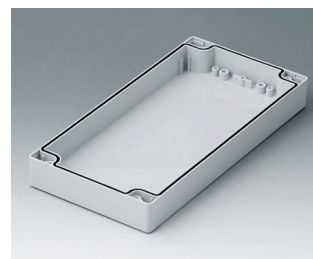
**C1121202**  
 Case shell 120, with groove  
 PC (UL 94 HB)  
 light grey RAL 7035  
 120x120x30mm



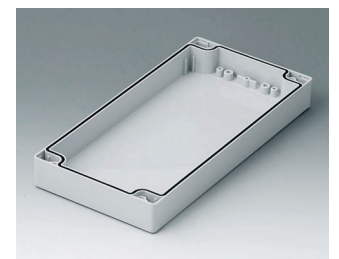
**C1122001**  
 Case shell 120, with groove  
 ABS (UL 94 HB)  
 light grey RAL 7035  
 200x120x30mm



**C1122002**  
 Case shell 120, with groove  
 PC (UL 94 HB)  
 light grey RAL 7035  
 200x120x30mm



**C1122401**  
 Case shell 120, with groove  
 ABS (UL 94 HB)  
 light grey RAL 7035  
 240x120x30mm



**C1122402**  
 Case shell 120, with groove  
 PC (UL 94 HB)  
 light grey RAL 7035  
 240x120x30mm

# ROBUST-BOX



**C1161601**  
Case shell 160, with groove  
ABS (UL 94 HB)  
light grey RAL 7035  
160x160x30mm



**C1161602**  
Case shell 160, with groove  
PC (UL 94 HB)  
light grey RAL 7035  
160x160x30mm



**C1162401**  
Case shell 160, with groove  
ABS (UL 94 HB)  
light grey RAL 7035  
240x160x30mm



**C1162402**  
Case shell 160, with groove  
PC (UL 94 HB)  
light grey RAL 7035  
240x160x30mm



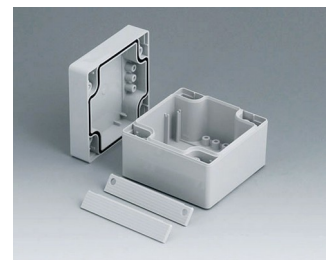
**C1203001**  
Case shell 200, with tongue  
ABS (UL 94 HB)  
light grey RAL 7035  
300x200x40mm



**C1243601**  
Case shell 240, with tongue  
ABS (UL 94 HB)  
light grey RAL 7035  
360x240x40mm



**C2008081**  
ROBUST-BOX WIDTH 80, Vers.  
I  
ABS (UL 94 HB)  
light grey RAL 7035  
80x80x60mm  
IP 66



**C2008082**  
ROBUST-BOX WIDTH 80, Vers.  
II  
PC (UL 94 HB)  
light grey RAL 7035  
80x80x60mm  
IP 66



**C2008121**  
ROBUST-BOX WIDTH 80, Vers.  
I  
ABS (UL 94 HB)  
light grey RAL 7035  
120x80x60mm  
IP 66



**C2008122**  
ROBUST-BOX WIDTH 80, Vers.  
II  
PC (UL 94 HB)  
light grey RAL 7035  
120x80x60mm  
IP 66



**C2008161**  
ROBUST-BOX WIDTH 80, Vers.  
I  
ABS (UL 94 HB)  
light grey RAL 7035  
160x80x60mm  
IP 66



**C2008162**  
ROBUST-BOX WIDTH 80, Vers.  
II  
PC (UL 94 HB)  
light grey RAL 7035  
160x80x60mm  
IP 66



**C2008241**  
ROBUST-BOX WIDTH 80, Vers.  
I  
ABS (UL 94 HB)  
light grey RAL 7035  
240x80x60mm  
IP 66



**C2008242**  
ROBUST-BOX WIDTH 80, Vers.  
II  
PC (UL 94 HB)  
light grey RAL 7035  
240x80x60mm  
IP 66



**C2012121**  
ROBUST-BOX WIDTH 120,  
Vers. I  
ABS (UL 94 HB)  
light grey RAL 7035  
120x120x60mm  
IP 66



**C2012122**  
ROBUST-BOX WIDTH 120,  
Vers. II  
PC (UL 94 HB)  
light grey RAL 7035  
120x120x60mm  
IP 66

# ROBUST-BOX



**C2012201**  
ROBUST-BOX WIDTH 120,  
Vers. I  
ABS (UL 94 HB)  
light grey RAL 7035  
200x120x60mm  
IP 66



**C2012202**  
ROBUST-BOX WIDTH 120,  
Vers. II  
PC (UL 94 HB)  
light grey RAL 7035  
200x120x60mm  
IP 66



**C2012241**  
ROBUST-BOX WIDTH 120,  
Vers. I  
ABS (UL 94 HB)  
light grey RAL 7035  
240x120x60mm  
IP 66



**C2012242**  
ROBUST-BOX WIDTH 120,  
Vers. II  
PC (UL 94 HB)  
light grey RAL 7035  
240x120x60mm  
IP 66



**C2016161**  
ROBUST-BOX WIDTH 160,  
Vers. I  
ABS (UL 94 HB)  
light grey RAL 7035  
160x160x60mm  
IP 66



**C2016162**  
ROBUST-BOX WIDTH 160,  
Vers. II  
PC (UL 94 HB)  
light grey RAL 7035  
160x160x60mm  
IP 66



**C2016241**  
ROBUST-BOX WIDTH 160,  
Vers. I  
ABS (UL 94 HB)  
light grey RAL 7035  
240x160x60mm  
IP 66



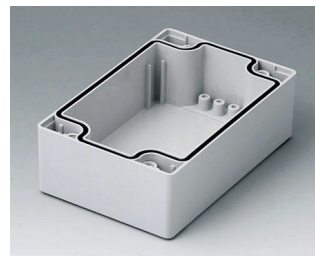
**C2016242**  
ROBUST-BOX WIDTH 160,  
Vers. II  
PC (UL 94 HB)  
light grey RAL 7035  
240x160x60mm  
IP 66



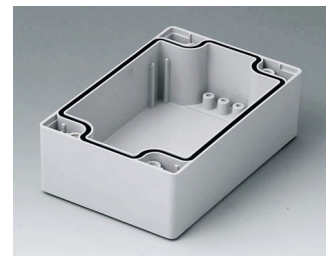
**C2080801**  
Case shell 80, with groove  
ABS (UL 94 HB)  
light grey RAL 7035  
80x80x40mm



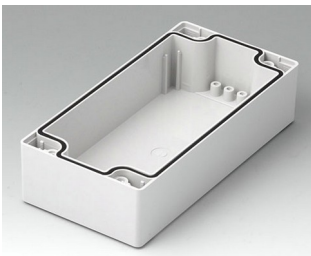
**C2080802**  
Case shell 80, with groove  
PC (UL 94 HB)  
light grey RAL 7035  
80x80x40mm



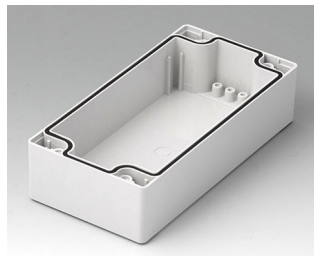
**C2081201**  
Case shell 80, with groove  
ABS (UL 94 HB)  
light grey RAL 7035  
120x80x40mm



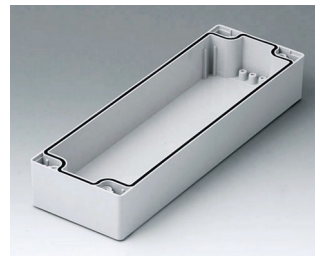
**C2081202**  
Case shell 80, with groove  
PC (UL 94 HB)  
light grey RAL 7035  
120x80x40mm



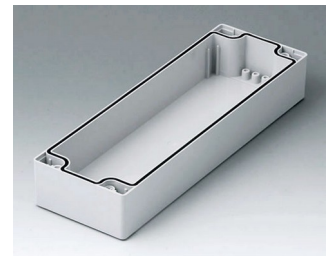
**C2081601**  
Case shell 80, with groove  
ABS (UL 94 HB)  
light grey RAL 7035  
160x80x40mm



**C2081602**  
Case shell 80, with groove  
PC (UL 94 HB)  
light grey RAL 7035  
160x80x40mm

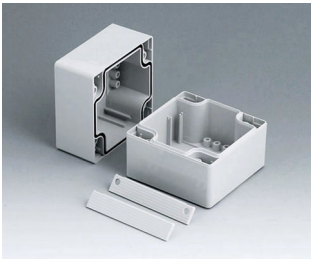


**C2082401**  
Case shell 80, with groove  
ABS (UL 94 HB)  
light grey RAL 7035  
240x80x40mm

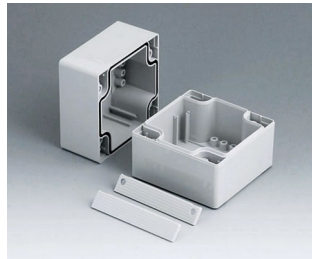


**C2082402**  
Case shell 80, with groove  
PC (UL 94 HB)  
light grey RAL 7035  
240x80x40mm

# ROBUST-BOX



**C2108081**  
ROBUST-BOX WIDTH 80, Vers. I  
ABS (UL 94 HB)  
light grey RAL 7035  
80x80x80mm  
IP 66



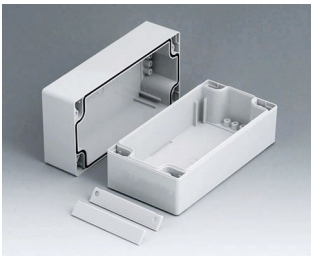
**C2108082**  
ROBUST-BOX WIDTH 80, Vers. II  
PC (UL 94 HB)  
light grey RAL 7035  
80x80x80mm  
IP 66



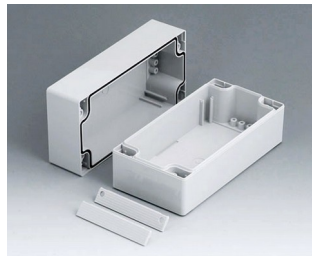
**C2108121**  
ROBUST-BOX WIDTH 80, Vers. I  
ABS (UL 94 HB)  
light grey RAL 7035  
120x80x80mm  
IP 66



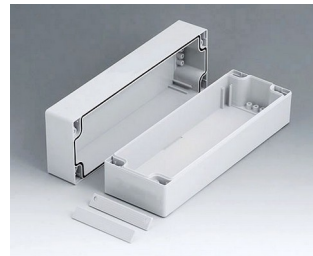
**C2108122**  
ROBUST-BOX WIDTH 80, Vers. II  
PC (UL 94 HB)  
light grey RAL 7035  
120x80x80mm  
IP 66



**C2108161**  
ROBUST-BOX WIDTH 80, Vers. I  
ABS (UL 94 HB)  
light grey RAL 7035  
160x80x80mm  
IP 66



**C2108162**  
ROBUST-BOX WIDTH 80, Vers. II  
PC (UL 94 HB)  
light grey RAL 7035  
160x80x80mm  
IP 66



**C2108241**  
ROBUST-BOX WIDTH 80, Vers. I  
ABS (UL 94 HB)  
light grey RAL 7035  
240x80x80mm  
IP 66



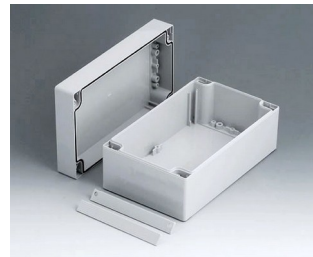
**C2108242**  
ROBUST-BOX WIDTH 80, Vers. II  
PC (UL 94 HB)  
light grey RAL 7035  
240x80x80mm  
IP 66



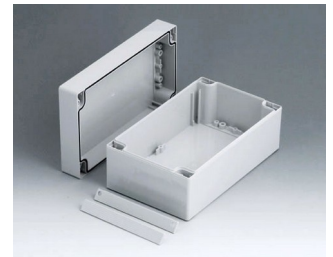
**C2112121**  
ROBUST-BOX WIDTH 120, Vers. I  
ABS (UL 94 HB)  
light grey RAL 7035  
120x120x90mm  
IP 66



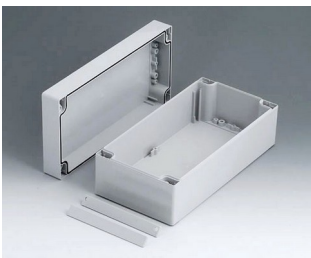
**C2112122**  
ROBUST-BOX WIDTH 120, Vers. II  
PC (UL 94 HB)  
light grey RAL 7035  
120x120x90mm  
IP 66



**C2112201**  
ROBUST-BOX WIDTH 120, Vers. I  
ABS (UL 94 HB)  
light grey RAL 7035  
200x120x90mm  
IP 66



**C2112202**  
ROBUST-BOX WIDTH 120, Vers. II  
PC (UL 94 HB)  
light grey RAL 7035  
200x120x90mm  
IP 66



**C2112241**  
ROBUST-BOX WIDTH 120, Vers. I  
ABS (UL 94 HB)  
light grey RAL 7035  
240x120x90mm  
IP 66



**C2112242**  
ROBUST-BOX WIDTH 120, Vers. II  
PC (UL 94 HB)  
light grey RAL 7035  
240x120x90mm  
IP 66



**C2116161**  
ROBUST-BOX WIDTH 160, Vers. I  
ABS (UL 94 HB)  
light grey RAL 7035  
160x160x90mm  
IP 66



**C2116162**  
ROBUST-BOX WIDTH 160, Vers. II  
PC (UL 94 HB)  
light grey RAL 7035  
160x160x90mm  
IP 66

# ROBUST-BOX



**C2116241**  
ROBUST-BOX WIDTH 160,  
Vers. I  
ABS (UL 94 HB)  
light grey RAL 7035  
240x160x90mm  
IP 66



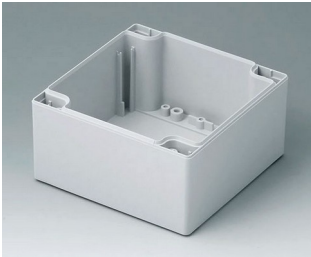
**C2116242**  
ROBUST-BOX WIDTH 160,  
Vers. II  
PC (UL 94 HB)  
light grey RAL 7035  
240x160x90mm  
IP 66



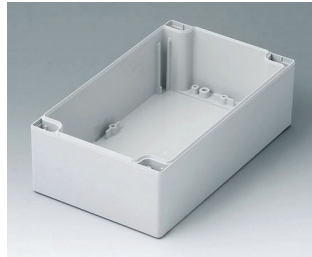
**C2120301**  
ROBUST-BOX WIDTH 200,  
Vers. I  
ABS (UL 94 HB)  
light grey RAL 7035  
300x200x80mm  
IP 66



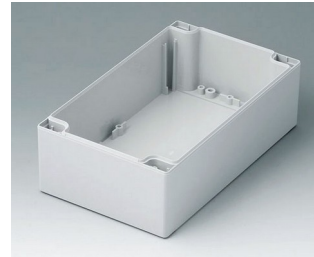
**C2121201**  
Case shell 120, with tongue  
ABS (UL 94 HB)  
light grey RAL 7035  
120x120x60mm



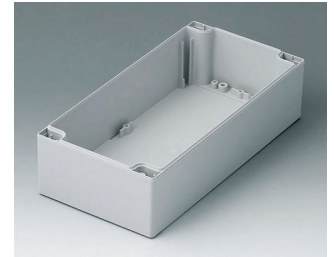
**C2121202**  
Case shell 120, with tongue  
PC (UL 94 HB)  
light grey RAL 7035  
120x120x60mm



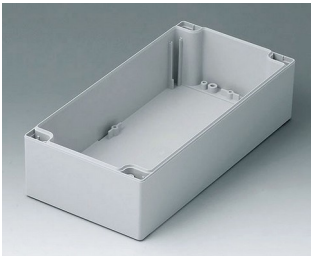
**C2122001**  
Case shell 120, with tongue  
ABS (UL 94 HB)  
light grey RAL 7035  
200x120x60mm



**C2122002**  
Case shell 120, with tongue  
PC (UL 94 HB)  
light grey RAL 7035  
200x120x60mm



**C2122401**  
Case shell 120, with tongue  
ABS (UL 94 HB)  
light grey RAL 7035  
240x120x60mm



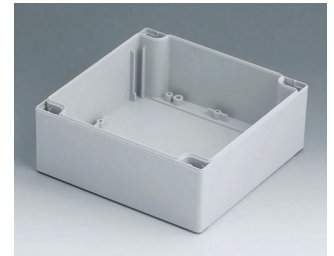
**C2122402**  
Case shell 120, with tongue  
PC (UL 94 HB)  
light grey RAL 7035  
240x120x60mm



**C2124361**  
ROBUST-BOX WIDTH 240,  
Vers. I  
ABS (UL 94 HB)  
light grey RAL 7035  
360x240x80mm  
IP 66



**C2161601**  
Case shell 160, with tongue  
ABS (UL 94 HB)  
light grey RAL 7035  
160x160x60mm



**C2161602**  
Case shell 160, with tongue  
PC (UL 94 HB)  
light grey RAL 7035  
160x160x60mm



**C2162401**  
Case shell 160, with tongue  
ABS (UL 94 HB)  
light grey RAL 7035  
240x160x60mm



**C2162402**  
Case shell 160, with tongue  
PC (UL 94 HB)  
light grey RAL 7035  
240x160x60mm



**C2203001**  
Case shell 200, with groove  
ABS (UL 94 HB)  
light grey RAL 7035  
300x200x40mm



**C2243601**  
Case shell 240, with groove  
ABS (UL 94 HB)  
light grey RAL 7035  
360x240x40mm

# ROBUST-BOX



**C2416241**  
 ROBUST-BOX WIDTH 160,  
 Vers. I  
 ABS (UL 94 HB)  
 light grey RAL 7035  
 240x160x120mm  
 IP 66



**C2416242**  
 ROBUST-BOX WIDTH 160,  
 Vers. II  
 PC (UL 94 HB)  
 light grey RAL 7035  
 240x160x120mm  
 IP 66



**C2420301**  
 ROBUST-BOX WIDTH 200,  
 Vers. I  
 ABS (UL 94 HB)  
 light grey RAL 7035  
 300x200x120mm  
 IP 66



**C2424361**  
 ROBUST-BOX WIDTH 240,  
 Vers. I  
 ABS (UL 94 HB)  
 light grey RAL 7035  
 360x240x120mm  
 IP 66



**C2520301**  
 ROBUST-BOX WIDTH 200,  
 Vers. I  
 ABS (UL 94 HB)  
 light grey RAL 7035  
 300x200x160mm  
 IP 66



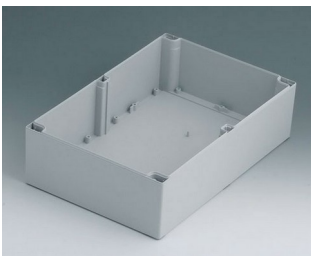
**C2524361**  
 ROBUST-BOX WIDTH 240,  
 Vers. I  
 ABS (UL 94 HB)  
 light grey RAL 7035  
 360x240x160mm  
 IP 66



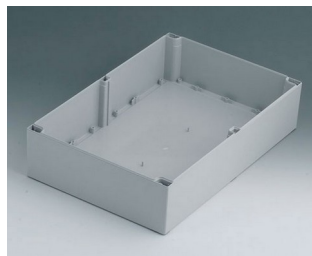
**C3162401**  
 Case shell 160, with groove  
 ABS (UL 94 HB)  
 light grey RAL 7035  
 240x160x60mm



**C3162402**  
 Case shell 160, with groove  
 PC (UL 94 HB)  
 light grey RAL 7035  
 240x160x60mm



**C4203001**  
 Case shell 200, with tongue  
 ABS (UL 94 HB)  
 light grey RAL 7035  
 300x200x80mm



**C4243601**  
 Case shell 240, with tongue  
 ABS (UL 94 HB)  
 light grey RAL 7035  
 360x240x80mm



**C5203001**  
 Case shell 200, with groove  
 ABS (UL 94 HB)  
 light grey RAL 7035  
 300x200x80mm



**C5243601**  
 Case shell 240, with groove  
 ABS (UL 94 HB)  
 light grey RAL 7035  
 360x240x80mm

## System components to complete



**C0080801**  
 Case shell 80, with groove  
 ABS (UL 94 HB)  
 light grey RAL 7035  
 80x80x20mm



**C0080802**  
 Case shell 80, with groove  
 PC (UL 94 HB)  
 light grey RAL 7035  
 80x80x20mm



**C0081201**  
 Case shell 80, with groove  
 ABS (UL 94 HB)  
 light grey RAL 7035  
 120x80x20mm



**C0081202**  
 Case shell 80, with groove  
 PC (UL 94 HB)  
 light grey RAL 7035  
 120x80x20mm

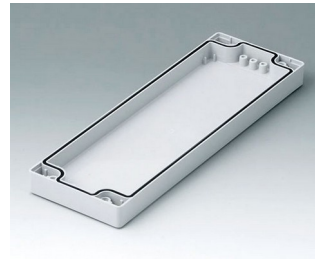
# ROBUST-BOX



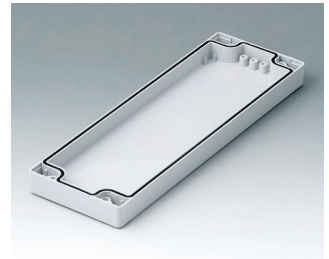
**C0081601**  
 Case shell 80, with groove  
 ABS (UL 94 HB)  
 light grey RAL 7035  
 160x80x20mm



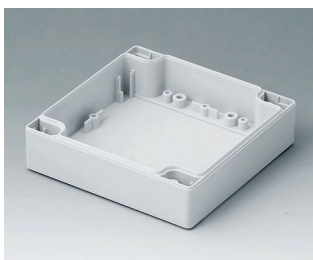
**C0081602**  
 Case shell 80, with groove  
 PC (UL 94 HB)  
 light grey RAL 7035  
 160x80x20mm



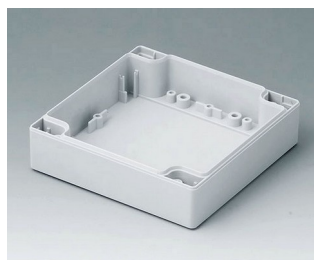
**C0082401**  
 Case shell 80, with groove  
 ABS (UL 94 HB)  
 light grey RAL 7035  
 240x80x20mm



**C0082402**  
 Case shell 80, with groove  
 PC (UL 94 HB)  
 light grey RAL 7035  
 240x80x20mm



**C0121201**  
 Case shell 120, with tongue  
 ABS (UL 94 HB)  
 light grey RAL 7035  
 120x120x30mm



**C0121202**  
 Case shell 120, with tongue  
 PC (UL 94 HB)  
 light grey RAL 7035  
 120x120x30mm



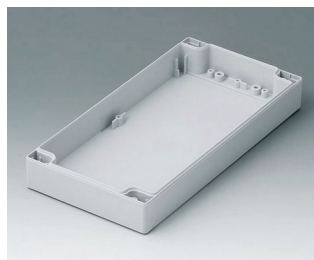
**C0122001**  
 Case shell 120, with tongue  
 ABS (UL 94 HB)  
 light grey RAL 7035  
 200x120x30mm



**C0122002**  
 Case shell 120, with tongue  
 PC (UL 94 HB)  
 light grey RAL 7035  
 200x120x30mm



**C0122401**  
 Case shell 120, with tongue  
 ABS (UL 94 HB)  
 light grey RAL 7035  
 240x120x30mm



**C0122402**  
 Case shell 120, with tongue  
 PC (UL 94 HB)  
 light grey RAL 7035  
 240x120x30mm



**C0161601**  
 Case shell 160, with tongue  
 ABS (UL 94 HB)  
 light grey RAL 7035  
 160x160x30mm



**C0161602**  
 Case shell 160, with tongue  
 PC (UL 94 HB)  
 light grey RAL 7035  
 160x160x30mm



**C0162401**  
 Case shell 160, with tongue  
 ABS (UL 94 HB)  
 light grey RAL 7035  
 240x160x30mm



**C0162402**  
 Case shell 160, with tongue  
 PC (UL 94 HB)  
 light grey RAL 7035  
 240x160x30mm

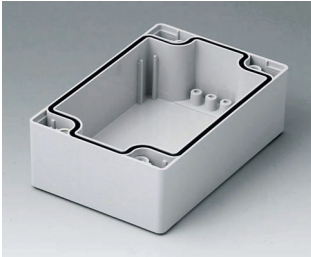


**C2080801**  
 Case shell 80, with groove  
 ABS (UL 94 HB)  
 light grey RAL 7035  
 80x80x40mm

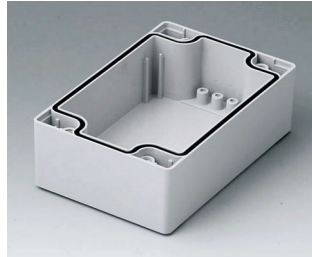


**C2080802**  
 Case shell 80, with groove  
 PC (UL 94 HB)  
 light grey RAL 7035  
 80x80x40mm

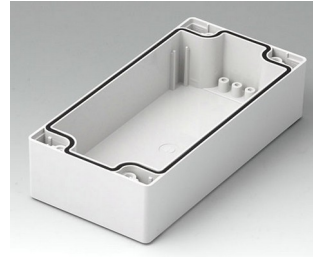
# ROBUST-BOX



**C2081201**  
Case shell 80, with groove  
ABS (UL 94 HB)  
light grey RAL 7035  
120x80x40mm



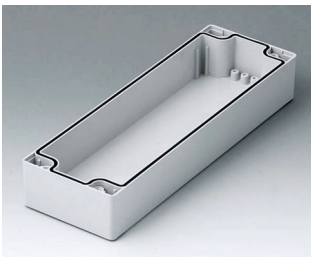
**C2081202**  
Case shell 80, with groove  
PC (UL 94 HB)  
light grey RAL 7035  
120x80x40mm



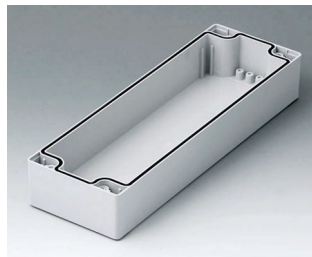
**C2081601**  
Case shell 80, with groove  
ABS (UL 94 HB)  
light grey RAL 7035  
160x80x40mm



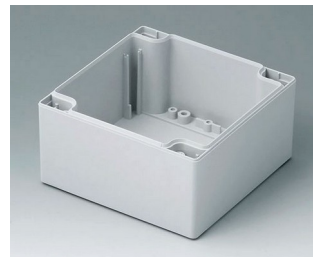
**C2081602**  
Case shell 80, with groove  
PC (UL 94 HB)  
light grey RAL 7035  
160x80x40mm



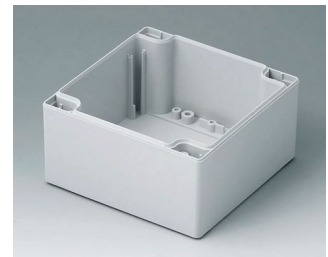
**C2082401**  
Case shell 80, with groove  
ABS (UL 94 HB)  
light grey RAL 7035  
240x80x40mm



**C2082402**  
Case shell 80, with groove  
PC (UL 94 HB)  
light grey RAL 7035  
240x80x40mm



**C2121201**  
Case shell 120, with tongue  
ABS (UL 94 HB)  
light grey RAL 7035  
120x120x60mm



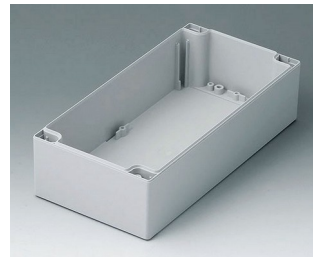
**C2121202**  
Case shell 120, with tongue  
PC (UL 94 HB)  
light grey RAL 7035  
120x120x60mm



**C2122001**  
Case shell 120, with tongue  
ABS (UL 94 HB)  
light grey RAL 7035  
200x120x60mm



**C2122002**  
Case shell 120, with tongue  
PC (UL 94 HB)  
light grey RAL 7035  
200x120x60mm



**C2122401**  
Case shell 120, with tongue  
ABS (UL 94 HB)  
light grey RAL 7035  
240x120x60mm



**C2122402**  
Case shell 120, with tongue  
PC (UL 94 HB)  
light grey RAL 7035  
240x120x60mm



**C2161601**  
Case shell 160, with tongue  
ABS (UL 94 HB)  
light grey RAL 7035  
160x160x60mm



**C2161602**  
Case shell 160, with tongue  
PC (UL 94 HB)  
light grey RAL 7035  
160x160x60mm



**C2162401**  
Case shell 160, with tongue  
ABS (UL 94 HB)  
light grey RAL 7035  
240x160x60mm



**C2162402**  
Case shell 160, with tongue  
PC (UL 94 HB)  
light grey RAL 7035  
240x160x60mm

# ROBUST-BOX



**C2203001**  
Case shell 200, with groove  
ABS (UL 94 HB)  
light grey RAL 7035  
300x200x40mm



**C2243601**  
Case shell 240, with groove  
ABS (UL 94 HB)  
light grey RAL 7035  
360x240x40mm



**C2299001**  
Assembly kit



**C2299002**  
Assembly kit



**C5203001**  
Case shell 200, with groove  
ABS (UL 94 HB)  
light grey RAL 7035  
300x200x80mm



**C5243601**  
Case shell 240, with groove  
ABS (UL 94 HB)  
light grey RAL 7035  
360x240x80mm

## Accessory to complete



**C2200801**  
Cover strips 80, without holes  
PC (UL 94 HB)  
light grey RAL 7035



**C2201082**  
Cover strips 80  
PC (UL 94 HB)  
silver grey RAL 7001



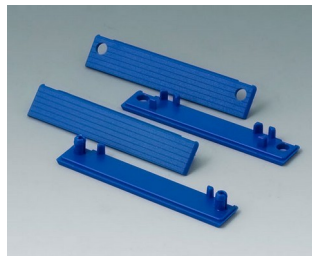
**C2201084**  
Cover strips 80  
PC (UL 94 HB)  
red RAL 3020



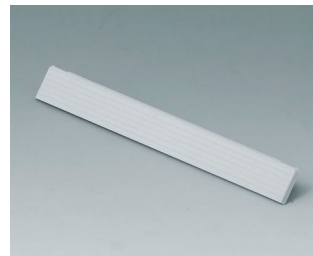
**C2201085**  
Cover strips 80  
PC (UL 94 HB)  
yellow RAL 1023



**C2201086**  
Cover strips 80  
PC (UL 94 HB)  
green RAL 6024



**C2201087**  
Cover strips 80  
PC (UL 94 HB)  
blue RAL 5017



**C2201201**  
Cover strips 120, without holes  
PC (UL 94 HB)  
light grey RAL 7035

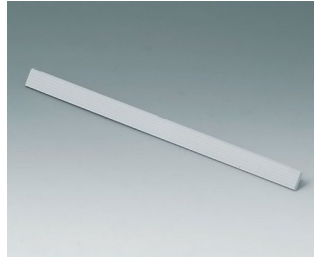


**C2201601**  
Cover strips 160, without holes  
PC (UL 94 HB)  
light grey RAL 7035

# ROBUST-BOX



**C2202001**  
Cover strips 200, without holes  
PC (UL 94 HB)  
light grey RAL 7035



**C2202401**  
Cover strips 240, without holes  
PC (UL 94 HB)  
light grey RAL 7035



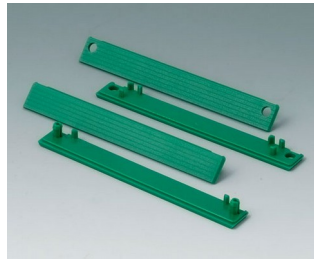
**C2203123**  
Cover strips 120  
PC (UL 94 HB)  
silver grey RAL 7001



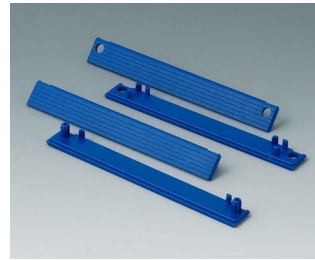
**C2203124**  
Cover strips 120  
PC (UL 94 HB)  
red RAL 3020



**C2203125**  
Cover strips 120  
PC (UL 94 HB)  
yellow RAL 1023



**C2203126**  
Cover strips 120  
PC (UL 94 HB)  
green RAL 6024



**C2203127**  
Cover strips 120  
PC (UL 94 HB)  
blue RAL 5017



**C2204162**  
Cover strips 160  
PC (UL 94 HB)  
silver grey RAL 7001



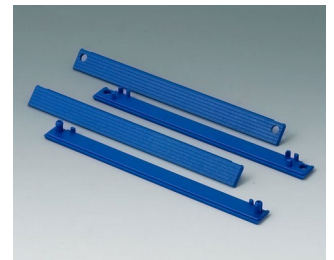
**C2204164**  
Cover strips 160  
PC (UL 94 HB)  
red RAL 3020



**C2204165**  
Cover strips 160  
PC (UL 94 HB)  
yellow RAL 1023



**C2204166**  
Cover strips 160  
PC (UL 94 HB)  
green RAL 6024



**C2204167**  
Cover strips 160  
PC (UL 94 HB)  
blue RAL 5017



**C2210801**  
Cover strips 80, with holes  
PC (UL 94 HB)  
light grey RAL 7035



**C2211201**  
Cover strips 120, with holes  
PC (UL 94 HB)  
light grey RAL 7035



**C2211601**  
Cover strips 160, with holes  
PC (UL 94 HB)  
light grey RAL 7035



**C2212001**  
Cover strips 200, with holes  
PC (UL 94 HB)  
light grey RAL 7035

# ROBUST-BOX



**C2212401**  
Cover strips 240, with holes  
PC (UL 94 HB)  
light grey RAL 7035

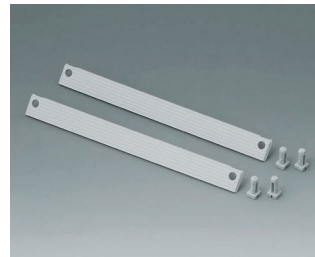
## Accessory "protection"



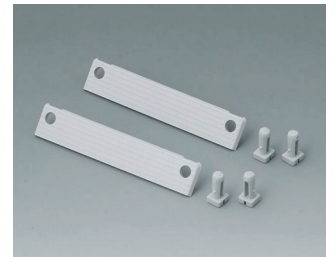
**C2299040**  
Security plug  
PA 6 (UL 94 HB)  
light grey RAL 7035



**C2299042**  
Security kit width 120  
PA 6 (UL 94 HB)  
light grey RAL 7035



**C2299046**  
Security kit width 160  
PA 6 (UL 94 HB)  
light grey RAL 7035



**C2299048**  
Security kit width 80  
PA 6 (UL 94 HB)  
light grey RAL 7035



**C2306917**  
Pressure equalisation element  
M6x0.75  
PA 6 (UL 94 HB)  
light grey RAL 7035  
IP 56



**C2310917**  
Pressure equalisation element  
M10x1  
PA 6 (UL 94 HB)  
light grey RAL 7035  
IP 56

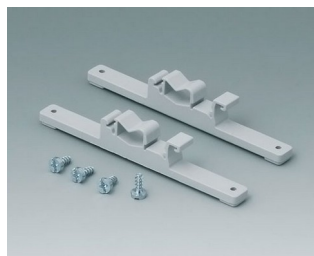


**C2320137**  
Cable grommet  
EPDM  
light grey RAL 7035  
IP 67

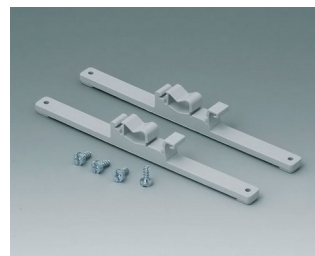
## Accessory "wall/holder"



**C2201088**  
Fastening elements to DIN-Rails  
PA 6  
light grey RAL 7035



**C2203128**  
Fastening elements to DIN-Rails  
PA 6  
light grey RAL 7035



**C2204168**  
Fastening elements to DIN-Rails  
PA 6  
light grey RAL 7035



**C2299028**  
Wall mounting brackets  
PA 6 (UL 94 HB)  
light grey RAL 7035

# ROBUST-BOX



**C2299031**  
Securing hinge for the cover  
PP  
natural-coloured



**C2299088**  
Hinge  
PA 6  
light grey RAL 7035

## Accessory "screws"



**A0306031**  
Self-tapping screws 3 x 6 mm  
(PZ1)

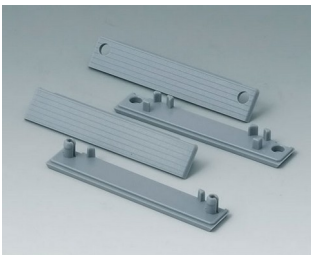


**A0308031**  
Self-tapping screws 3 x 8 mm  
(PZ1)



**A0308132**  
Self-tapping screw 3 x 8 mm  
(T10)  
Stainless steel

## Accessory



**C2201082**  
Cover strips 80  
PC (UL 94 HB)  
silver grey RAL 7001



**C2201084**  
Cover strips 80  
PC (UL 94 HB)  
red RAL 3020



**C2201085**  
Cover strips 80  
PC (UL 94 HB)  
yellow RAL 1023



**C2201086**  
Cover strips 80  
PC (UL 94 HB)  
green RAL 6024



**C2201087**  
Cover strips 80  
PC (UL 94 HB)  
blue RAL 5017



**C2203123**  
Cover strips 120  
PC (UL 94 HB)  
silver grey RAL 7001



**C2203124**  
Cover strips 120  
PC (UL 94 HB)  
red RAL 3020



**C2203125**  
Cover strips 120  
PC (UL 94 HB)  
yellow RAL 1023

# ROBUST-BOX



**C2203126**  
 Cover strips 120  
 PC (UL 94 HB)  
 green RAL 6024



**C2203127**  
 Cover strips 120  
 PC (UL 94 HB)  
 blue RAL 5017



**C2204162**  
 Cover strips 160  
 PC (UL 94 HB)  
 silver grey RAL 7001



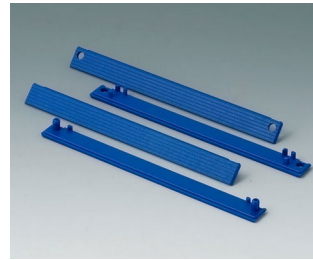
**C2204164**  
 Cover strips 160  
 PC (UL 94 HB)  
 red RAL 3020



**C2204165**  
 Cover strips 160  
 PC (UL 94 HB)  
 yellow RAL 1023



**C2204166**  
 Cover strips 160  
 PC (UL 94 HB)  
 green RAL 6024



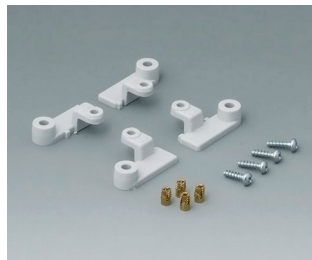
**C2204167**  
 Cover strips 160  
 PC (UL 94 HB)  
 blue RAL 5017



**C2299018**  
 Case feet  
 TPE (UL 94 HB)



**C2299058**  
 PCB support  
 PC (UL 94 HB)  
 light grey RAL 7035



**C2299068**  
 PCB support  
 PC (UL 94 HB)  
 light grey RAL 7035

Nos reservamos el derecho a realizar modificaciones técnicas. © OKW Gehäusesysteme, Buchen (Alemania).