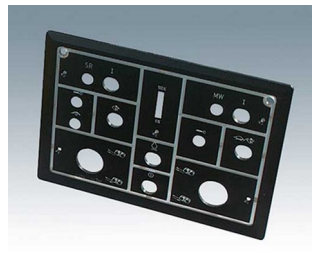
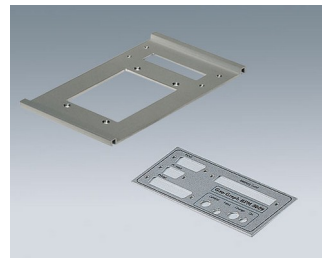


MACHINING

- milling cutouts for interfaces, cable inputs and outputs, displays, operating elements and LEDs in plastic and aluminium
- tapping threads >M2
- recesses to protect decoration foils, membrane keypads and panels
- **NEW:** Reduction of the internal wall thickness for partially backlit surfaces allows the light from LEDs positioned behind them to shine through, making it ideal for temperature or individual status displays. Preserving the IP protection class of the enclosure.
- **NEW:** Machining for press studs fastening (male or female). Particularly recommended for OKW small enclosures, e.g. **BODY-CASE**, **MINITEC**, **ERGO-CASE**, **CONNECT**, **SOFT-CASE** and **MINI-DATA-BOX**
- engraving all kinds of inscriptions, with/without colour lines



Subject to technical modification without notice. © by OKW Gehäusesysteme, Buchen/Germany.