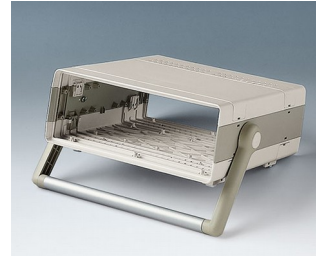


HANDLE BAR, BAIL ARM

Tilt and swivel carry handle bars made of plastic and diecast zinc. With matching anodised aluminium profile, cut to the correct width for your enclosure, and supplied as a separate component.



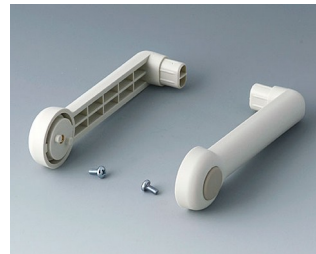
Select Versions



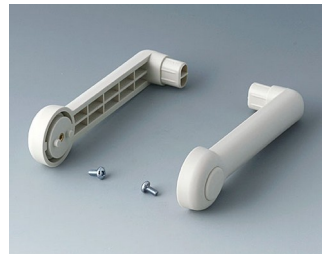
A9300014
Side arm kit
Zinc
off-white RAL 9002



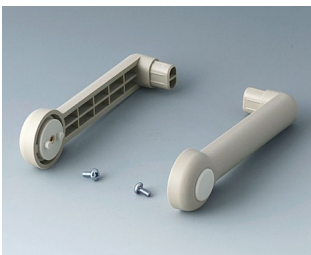
A9300015
Side arm kit
PA 6 (UL 94 HB)
black RAL 9005



A9300016
Side arm kit
PA 6
off-white RAL 9002



A9300017
Side arm kit
PA 6
off-white RAL 9002



A9300018
Side arm kit
PA 6
pebble grey RAL 7032



A9300522
Side arm kit
PA 6 (UL 94 HB)
black RAL 9005



A9300722
Side arm kit
PA 6
off-white RAL 9002



A9300822
Side arm kit
PA 6
light grey RAL 7035

HANDLE BAR, BAIL ARM

Subject to technical modification without notice. © by OKW Gehäusesysteme, Buchen/Germany.