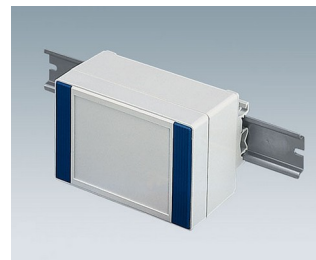
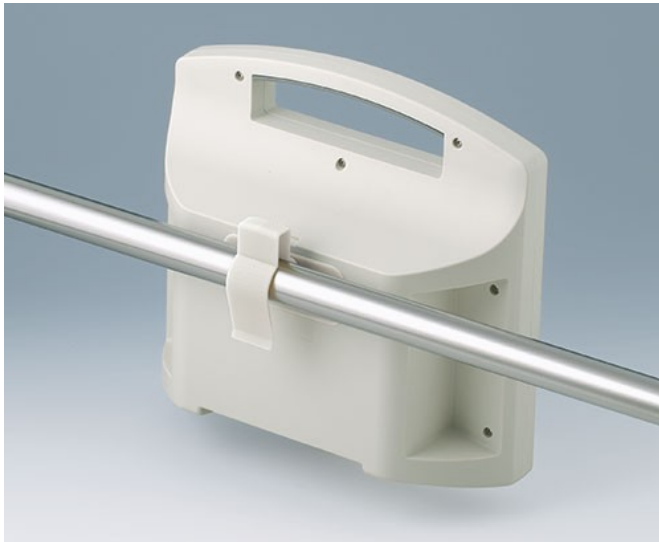


HOLDING DEVICES

- Fastening element for DIN rails in accordance with DIN EN 60715 TH35 and G32
- Holding clamp for round tubes up to \varnothing 32 mm / equipment rails DIN EN ISO 19054



Customising Options

What do you still need for your own very personal product? We can supply enclosures and tuning knobs with all necessary modifications for fitting your electronic components.
Customising options for Holding devices



Machining



Printing



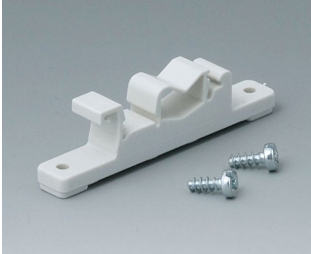
Laser marking



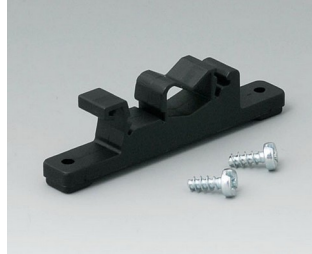
Installation / Assembly
of accessories

HOLDING DEVICES

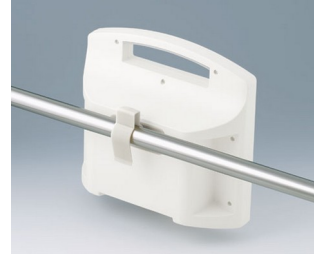
Select Versions



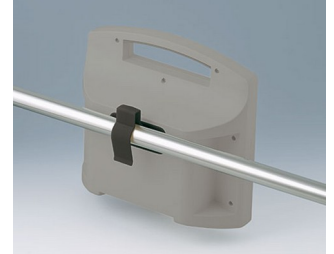
B1300017
Fastening element for DIN-Rails
PA 6
off-white RAL 9002



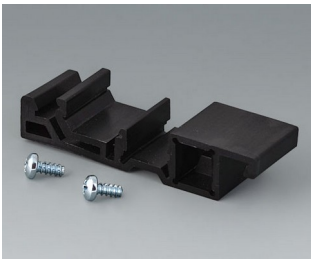
B1300019
Fastening element for DIN-Rails
PA 6
black RAL 9005



B4308237
Holding clamps
PA 6
off-white RAL 9002



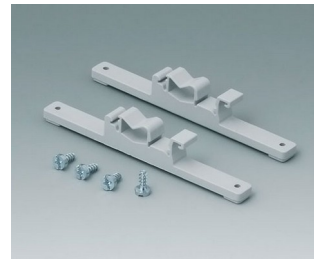
B4308238
Holding clamps
PA 6
lava



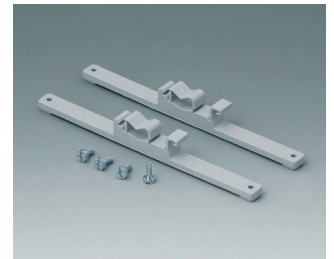
B6811751
DIN rail adapter
PA 66 (UL 94 V-0)
black RAL 9005



C2201088
Fastening elements to DIN-Rails
PA 6
light grey RAL 7035



C2203128
Fastening elements to DIN-Rails
PA 6
light grey RAL 7035



C2204168
Fastening elements to DIN-Rails
PA 6
light grey RAL 7035

Subject to technical modification without notice. © by OKW Gehäusesysteme, Buchen/Germany.