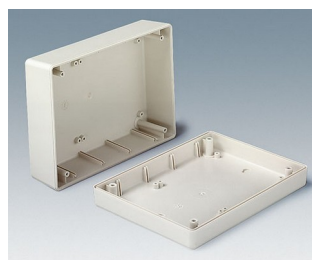
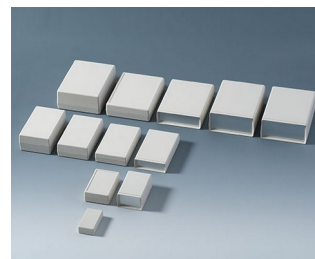


SHELL-TYPE CASES

Universal instrument enclosures

Our comprehensive SHELL-TYPE CASE range of plastic enclosures available in different sizes, heights and types. Simply choose the case that meets your individual requirements!

- fifty one models in three different types:
 - type V** – with open front for a panel (acc.)
 - type O** – with open front and rear for panels (acc.)
 - type G** – with closed front and rear
- robust construction with tongue and groove
- internal guide ridges for vertical mounting of partitions and PCBs
- internal screw pillars for PCBs etc.
- front and rear panels in aluminium or PMMA red (acrylic glass) available as accessories
- versions with battery compartment for 2 x AA, 4 x AA, 1 x 9 V or 2 x 9 V cells (types V and G)
- closed version (type G) also available with recessed top
- protection class IP 65 for closed versions (type G) without battery compartment when using the sealing kit (accessory)
- EMC: on request the SHELL-TYPE CASES are also available with aluminium metalisation; aluminium contact strips (accessories) provide additional electrical continuity between the top and base shells of the shielded cases
- wall mounting brackets and wall suspension elements as accessories
- additional functions with universal accessories



SHELL-TYPE CASES

Applications and Examples

Measuring and control technology, medical, wellness and laboratory technology, peripheral devices and interfaces, switchboxes etc.



Magnetic metal detector



System for leak detection in leisure vehicles



Teleservice Gateway MGW/865

Customising Options

What do you still need for your own very personal product? We can supply enclosures and tuning knobs with all necessary modifications for fitting your electronic components.

Customising options for Shell-Type Cases



Machining



Lacquering



Printing



Laser marking



Decor foils



Special material



EMC shielding



Installation / Assembly
of accessories

SHELL-TYPE CASES

Select Versions



A9404331
SHELL-TYPE CASES G 85,
Vers. I
ABS (UL 94 HB)
off-white RAL 9002
45x85x22mm
IP 65 opt.



A9404333
SHELL-TYPE CASES V 85,
Vers. I
ABS (UL 94 HB)
off-white RAL 9002
45x85x22mm



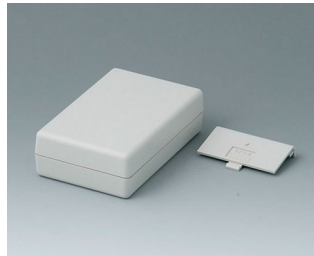
A9404341
SHELL-TYPE CASES G 85,
Vers. I
ABS (UL 94 HB)
off-white RAL 9002
45x85x33mm
IP 65 opt.



A9404441
SHELL-TYPE CASES G 85,
Vers. I
ABS (UL 94 HB)
off-white RAL 9002
45x85x45mm
IP 65 opt.



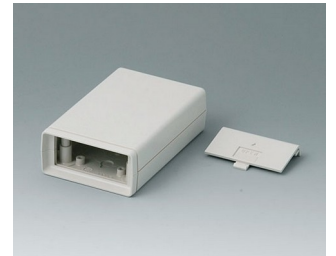
A9406331
SHELL-TYPE CASES G 110,
Vers. I
ABS (UL 94 HB)
off-white RAL 9002
72x114x33mm
IP 65 opt.



A9406332
SHELL-TYPE CASES G 110,
Vers. II
ABS (UL 94 HB)
off-white RAL 9002
72x114x33mm



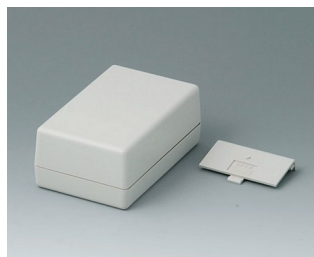
A9406333
SHELL-TYPE CASES V 110,
Vers. I
ABS (UL 94 HB)
off-white RAL 9002
72x114x33mm



A9406334
SHELL-TYPE CASES V 110,
Vers. II
ABS (UL 94 HB)
off-white RAL 9002
72x114x33mm



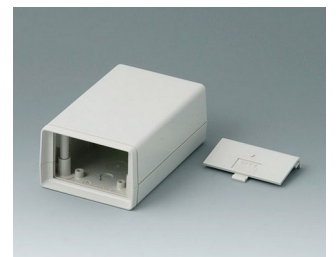
A9406341
SHELL-TYPE CASES G 110,
Vers. I
ABS (UL 94 HB)
off-white RAL 9002
72x114x45mm
IP 65 opt.



A9406342
SHELL-TYPE CASES G 110,
Vers. II
ABS (UL 94 HB)
off-white RAL 9002
72x114x45mm



A9406343
SHELL-TYPE CASES V 110,
Vers. I
ABS (UL 94 HB)
off-white RAL 9002
72x114x45mm

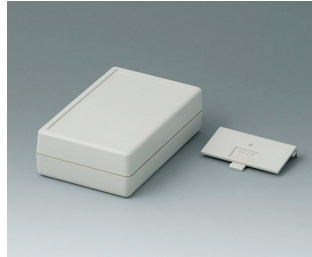


A9406344
SHELL-TYPE CASES V 110,
Vers. II
ABS (UL 94 HB)
off-white RAL 9002
72x114x45mm

SHELL-TYPE CASES



A9406351
SHELL-TYPE CASES G 110,
Vers. I
ABS (UL 94 HB)
off-white RAL 9002
72x114x33.5mm
IP 65 opt.



A9406352
SHELL-TYPE CASES G 110,
Vers. II
ABS (UL 94 HB)
off-white RAL 9002
72x114x33.5mm



A9406441
SHELL-TYPE CASES G 110,
Vers. I
ABS (UL 94 HB)
off-white RAL 9002
72x114x57mm
IP 65 opt.



A9406443
SHELL-TYPE CASES V 110,
Vers. I
ABS (UL 94 HB)
off-white RAL 9002
72x114x57mm



A9408330
SHELL-TYPE CASES O 155,
Vers. I
ABS (UL 94 HB)
off-white RAL 9002
95x158x33mm



A9408331
SHELL-TYPE CASES G 155,
Vers. I
ABS (UL 94 HB)
off-white RAL 9002
95x158x33mm
IP 65 opt.



A9408333
SHELL-TYPE CASES V 155,
Vers. I
ABS (UL 94 HB)
off-white RAL 9002
95x158x33mm



A9408335
SHELL-TYPE CASES G 155,
Vers. IV
ABS (UL 94 HB)
off-white RAL 9002
95x158x33mm



A9408336
SHELL-TYPE CASES V 155,
Vers. IV
ABS (UL 94 HB)
off-white RAL 9002
95x158x33mm



A9408340
SHELL-TYPE CASES O 155,
Vers. I
ABS (UL 94 HB)
off-white RAL 9002
95x158x45mm



A9408341
SHELL-TYPE CASES G 155,
Vers. I
ABS (UL 94 HB)
off-white RAL 9002
95x158x45mm
IP 65 opt.



A9408343
SHELL-TYPE CASES V 155,
Vers. I
ABS (UL 94 HB)
off-white RAL 9002
95x158x45mm



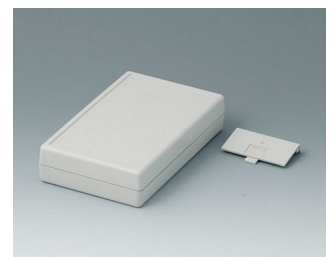
A9408345
SHELL-TYPE CASES G 155,
Vers. IV
ABS (UL 94 HB)
off-white RAL 9002
95x158x45mm



A9408346
SHELL-TYPE CASES V 155,
Vers. IV
ABS (UL 94 HB)
off-white RAL 9002
95x158x45mm



A9408351
SHELL-TYPE CASES G 155,
Vers. I
ABS (UL 94 HB)
off-white RAL 9002
95x158x33.5mm
IP 65 opt.



A9408355
SHELL-TYPE CASES G 155,
Vers. IV
ABS (UL 94 HB)
off-white RAL 9002
95x158x33.5mm

SHELL-TYPE CASES



A9408440
SHELL-TYPE CASES O 155,
Vers. I
ABS (UL 94 HB)
off-white RAL 9002
95x155x57mm



A9408441
SHELL-TYPE CASES G 155,
Vers. I
ABS (UL 94 HB)
off-white RAL 9002
95x158x57mm
IP 65 opt.



A9408443
SHELL-TYPE CASES V 155,
Vers. I
ABS (UL 94 HB)
off-white RAL 9002
95x158x57mm



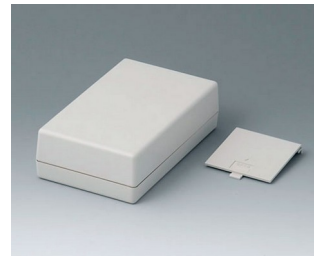
A9408638
SHELL-TYPE CASES V 155,
Vers. V
ABS (UL 94 HB)
off-white RAL 9002
95x158x33mm



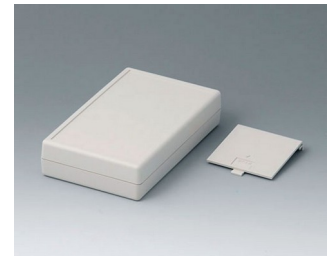
A9408648
SHELL-TYPE CASES V 155,
Vers. V
ABS (UL 94 HB)
off-white RAL 9002
95x158x45mm



A9408737
SHELL-TYPE CASES G 155,
Vers. V
ABS (UL 94 HB)
off-white RAL 9002
95x158x33mm



A9408747
SHELL-TYPE CASES G 155,
Vers. V
ABS (UL 94 HB)
off-white RAL 9002
95x158x45mm



A9408757
SHELL-TYPE CASES G 155,
Vers. V
ABS (UL 94 HB)
off-white RAL 9002
95x158x33.5mm



A9413330
SHELL-TYPE CASES O 190,
Vers. I
ABS (UL 94 HB)
off-white RAL 9002
138x190x45mm



A9413331
SHELL-TYPE CASES G 190,
Vers. I
ABS (UL 94 HB)
off-white RAL 9002
138x190x45mm
IP 65 opt.



A9413333
SHELL-TYPE CASES V 190,
Vers. I
ABS (UL 94 HB)
off-white RAL 9002
138x190x45mm



A9413340
SHELL-TYPE CASES O 190,
Vers. I
ABS (UL 94 HB)
off-white RAL 9002
138x190x68mm



A9413341
SHELL-TYPE CASES G 190,
Vers. I
ABS (UL 94 HB)
off-white RAL 9002
138x190x68mm
IP 65 opt.



A9413343
SHELL-TYPE CASES V 190,
Vers. I
ABS (UL 94 HB)
off-white RAL 9002
138x190x68mm



A9413351
SHELL-TYPE CASES G 190,
Vers. I
ABS (UL 94 HB)
off-white RAL 9002
138x190x45.5mm
IP 65 opt.



A9413440
SHELL-TYPE CASES O 190,
Vers. I
ABS (UL 94 HB)
off-white RAL 9002
138x190x91mm

SHELL-TYPE CASES



A9413441
SHELL-TYPE CASES G 190,
Vers. I
ABS (UL 94 HB)
off-white RAL 9002
138x190x91mm
IP 65 opt.



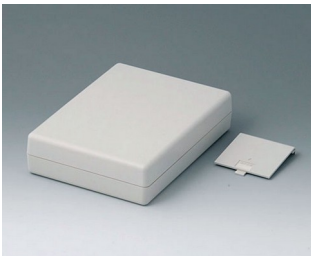
A9413443
SHELL-TYPE CASES V 190,
Vers. I
ABS (UL 94 HB)
off-white RAL 9002
138x190x91mm



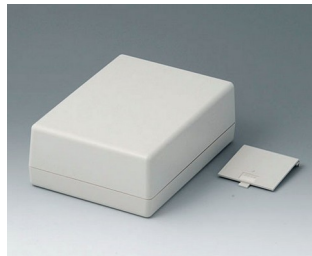
A9413638
SHELL-TYPE CASES V 190,
Vers. V
ABS (UL 94 HB)
off-white RAL 9002
138x190x45mm



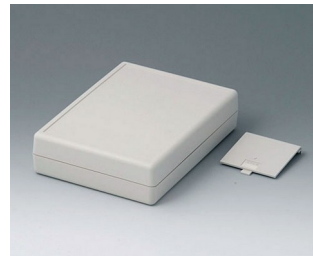
A9413648
SHELL-TYPE CASES V 190,
Vers. V
ABS (UL 94 HB)
off-white RAL 9002
138x190x68mm



A9413737
SHELL-TYPE CASES G 190,
Vers. V
ABS (UL 94 HB)
off-white RAL 9002
138x190x45mm

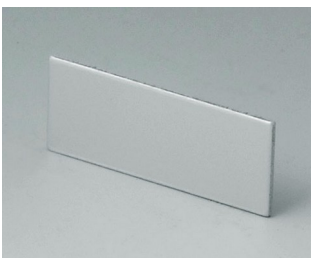


A9413747
SHELL-TYPE CASES G 190,
Vers. V
ABS (UL 94 HB)
off-white RAL 9002
138x190x68mm

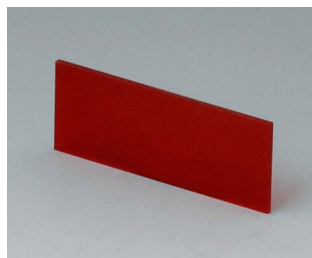


A9413757
SHELL-TYPE CASES G 190,
Vers. V
ABS (UL 94 HB)
off-white RAL 9002
138x190x45.5mm

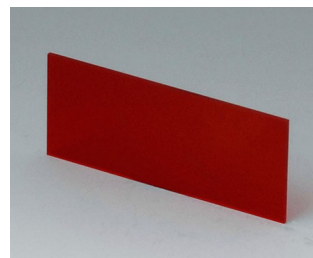
Accessory to complete



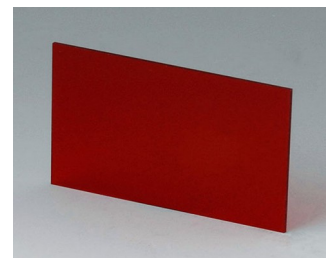
A9104111
Front / rear panel V 85
Aluminium
matt anodised
36x14.6x1mm



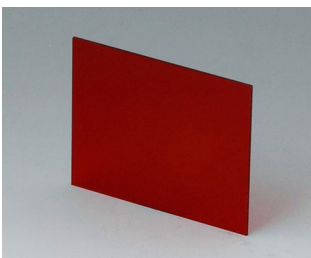
A9104113
Front / rear panel V 85
Acrylic glass
red transparent
36x14.6x1mm



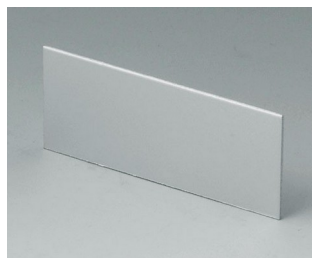
A9106113
Front / rear panel V 110
Acrylic glass
red transparent
59.3x25x1mm



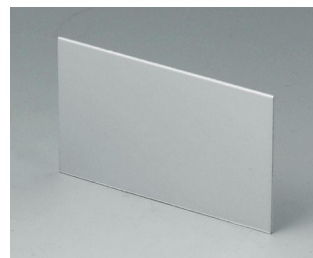
A9106123
Front / rear panel V 110
Acrylic glass
red transparent
59.3x37x1mm



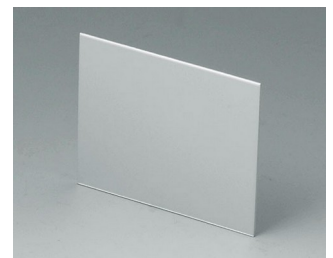
A9106223
Front / rear panel V 110
Acrylic glass
red transparent
59.3x49x1mm



A9107111
Front / rear panel V 110
Aluminium
matt anodised
59.3x25x1mm



A9107121
Front / rear panel V 110
Aluminium
matt anodised
59.3x37x1mm



A9107221
Front / rear panel V 110
Aluminium
matt anodised
59.3x49x1mm

SHELL-TYPE CASES



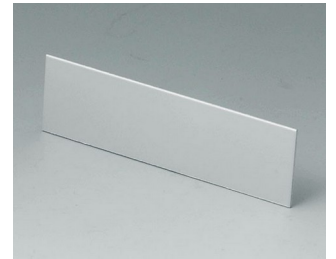
A9108113
Front / rear panel V, O 155
Acrylic glass
red transparent
81.9x23.6x1mm



A9108123
Front / rear panel V, O 155
Acrylic glass
red transparent
81.9x35.6x1mm



A9108223
Front / rear panel V, O 155
Acrylic glass
red transparent
81.9x47.6x1mm



A9109111
Front / rear panel V, O 155
Aluminium
matt anodised
81.9x23.6x1mm



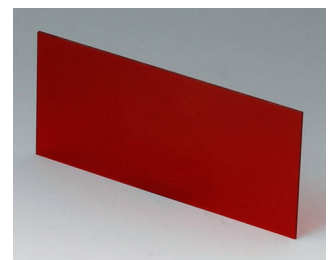
A9109121
Front / rear panel V, O 155
Aluminium
matt anodised
81.9x35.6x1mm



A9109221
Front / rear panel V, O 155
Aluminium
matt anodised
81.9x47.6x1mm



A9113113
Front / rear panel V, O 190
Acrylic glass
red transparent
124.2x33.6x1.5mm



A9113123
Front / rear panel V, O 190
Acrylic glass
red transparent
124.2x56.6x1.5mm



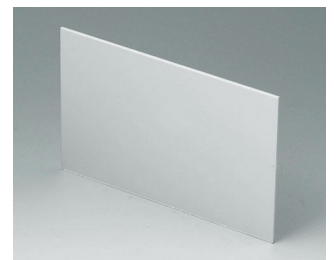
A9113223
Front / rear panel V, O 190
Acrylic glass
red transparent
124.2x79.6x1.5mm



A9114111
Front / rear panel V, O 190
Aluminium
matt anodised
124.2x33.6x1.5mm



A9114121
Front / rear panel V, O 190
Aluminium
matt anodised
124.2x56.6x1.5mm



A9114221
Front / rear panel V, O 190
Aluminium
matt anodised
124.2x79.6x1.5mm

Accessory "battery"



A9160003
Plug-in contact, 1 x 9 V (PP3)



A9190013
Set of battery clips, 4 x AA
Steel
nickel-plated



A9190014
Set of battery clips, 2 x AA
Steel
nickel-plated



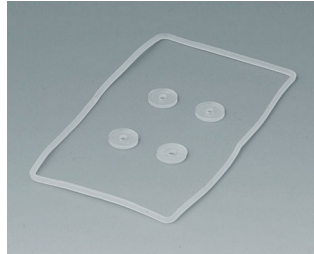
A9250250
Battery spacer
PE foam
50x25x4mm

SHELL-TYPE CASES

Accessory "protection"



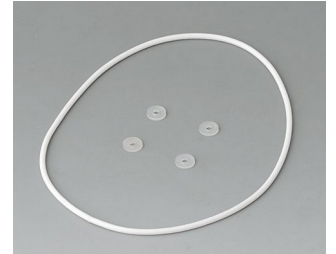
A9104073
 Contact-strips V, G 85
 Aluminium



A9104250
 Sealing kit G 85



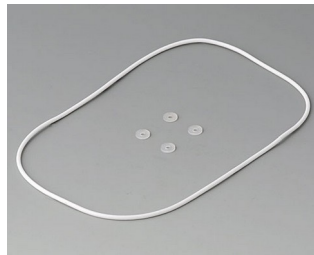
A9106095
 Contact-strips V, G 110
 Aluminium



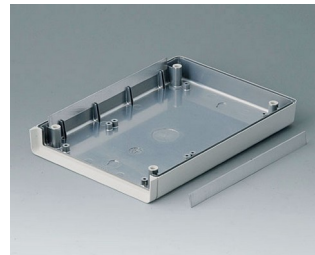
A9106352
 Sealing kit G 110



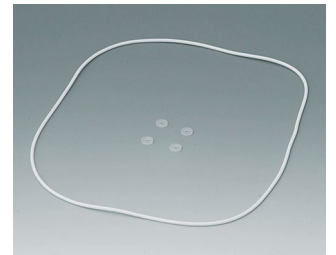
A9108120
 Contact-strips V, O, G 155
 Aluminium



A9108486
 Sealing kit G 155



A9113150
 Contact-strips V, O, G 190
 Aluminium



A9113630
 Sealing kit G 190

Accessory "wall/holder"



A9204108
 Wall mounting brackets
 PA 6
 pebble grey RAL 7032



B1350048
 Wall suspension elements
 ABS (UL 94 HB)
 pebble grey RAL 7032



B1360048
 Wall suspension elements
 ABS (UL 94 HB)
 pebble grey RAL 7032

Accessory "carrying"



A9100001
 Ring eyelet
 PA 6
 volcano



A9100002
 Ring eyelet
 PA 6
 volcano



A9172107
 Belt/Pocket clip
 ABS (UL 94 HB)
 off-white RAL 9002
 62x30mm

SHELL-TYPE CASES

Accessory "screws"



A0306031
Self-tapping screws 3 x 6 mm
(PZ1)

Accessory



A9207150
Anti-slide feet 6.5 x 2 mm
transparent



A9210290
Anti-slide feet 9.5 x 3.8 mm
transparent



A9250807
Tilt foot bar
ABS (UL 94 HB)
off-white RAL 9002



A9250817
Tilt foot bar
ABS (UL 94 HB)
off-white RAL 9002

Subject to technical modification without notice. © by OKW Gehäusesysteme, Buchen/Germany.