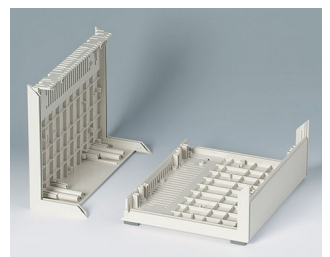
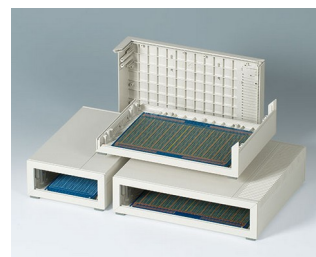
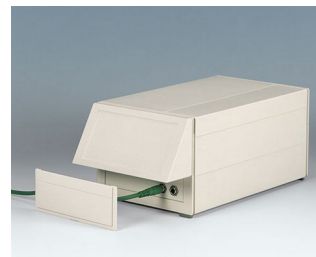
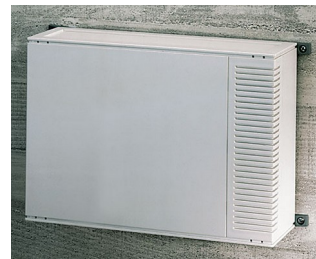


# MEDITEC

## Large instrument enclosures

MEDITEC plastic enclosures are characterised by a modern, stylish and functional design which is ideal for housing contemporary high-quality electronics equipment.

- stylish and functional design
- versatile design for desktop, wall mount and portable applications
- robust construction with strengthening ribs
- easy assembly technique
- four plan sizes in accordance with eurocard-size PCBs, double and extended
- two standard heights, increased by adding side panels
- ergonomic sloping control panel; if also using a side panel, order the infill panel to close the open gap under the sloping control panel
- plastic front and rear panels for identical surface finishes, easy to machine
- clip-in side trims with/without ventilation slots, in case colour or lagoon green, hide the case fixing screws, other colours on request
- four screw-on non-slip feet included
- optional wall mounting with wall mounting brackets
- versions with handle; for portable applications, if necessary, the adjustment mechanism allows the user to set a practical angle, in increments of 30°
- internal screw pillars for PCBs and components



# MEDITEC

## Applications and Examples

Medical, wellness and laboratory devices, feedback control, test and measurement systems, control peripherals, modems and interfaces, communication and network technology, data collection, etc.



amicOx pulse oximeter



Dry milling unit for foot care



NeurOne Tesla EEG System



Pneumatic Lithotripter System

## Customising Options

What do you still need for your own very personal product? We can supply enclosures and tuning knobs with all necessary modifications for fitting your electronic components. Customising options for Meditec



Machining



Lacquering



Printing



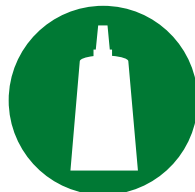
Laser marking



Special material

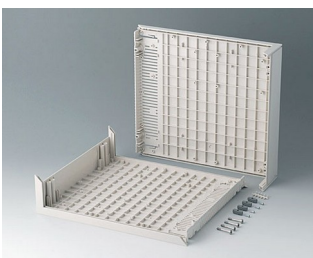


EMC shielding

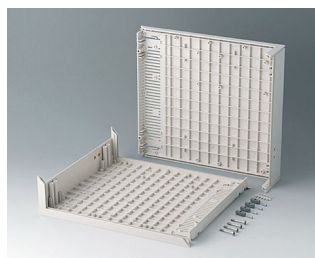


Installation / Assembly  
of accessories

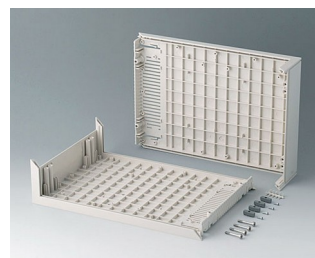
## Select Versions



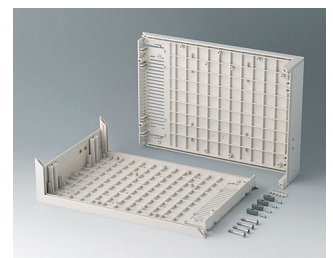
**B201007**  
L-shells D 220, without holes  
ABS (UL 94 HB)  
off-white RAL 9002  
290x260x74mm



**B201017**  
L-shells D 220, with holes for  
handle  
ABS (UL 94 HB)  
off-white RAL 9002  
290x260x74mm

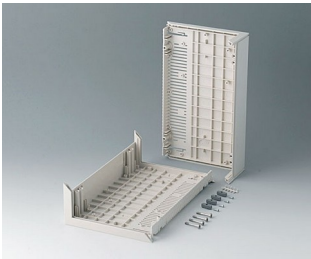


**B201107**  
L-shells D 160, without holes  
ABS (UL 94 HB)  
off-white RAL 9002  
290x200x74mm

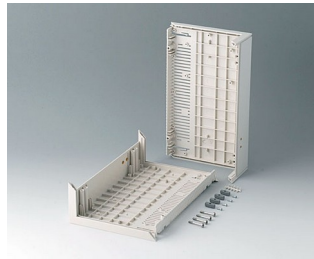


**B201117**  
L-shells D 160, with holes for  
handle  
ABS (UL 94 HB)  
off-white RAL 9002  
290x200x74mm

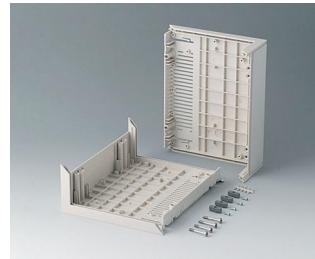
# MEDITEC



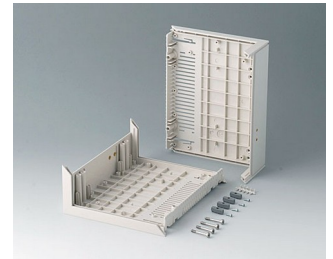
**B2012007**  
L-shells E 220, without holes  
ABS (UL 94 HB)  
off-white RAL 9002  
160x260x74mm



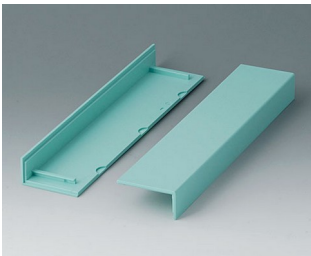
**B2012107**  
L-shells E 220, with holes for handle  
ABS (UL 94 HB)  
off-white RAL 9002  
160x260x74mm



**B2013007**  
L-shells E 160, without holes  
ABS (UL 94 HB)  
off-white RAL 9002  
160x200x74mm



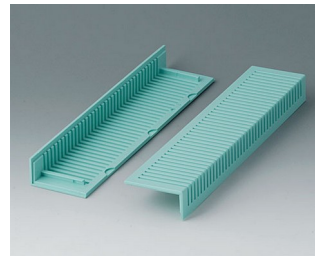
**B2013107**  
L-shells E 160, with holes for handle  
ABS (UL 94 HB)  
off-white RAL 9002  
160x200x74mm



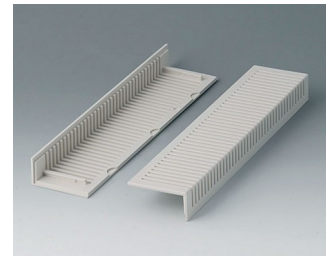
**B2020005**  
Side trims 220, without ventilation  
ABS  
lagoon



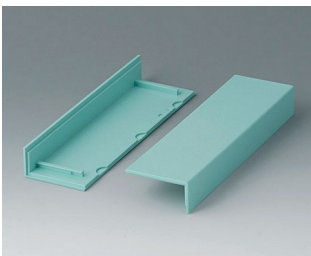
**B2020007**  
Side trims 220, without ventilation  
ABS (UL 94 HB)  
off-white RAL 9002



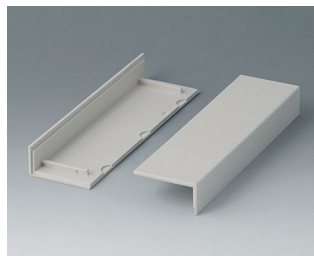
**B2021005**  
Side trims 220, with ventilation  
ABS  
lagoon



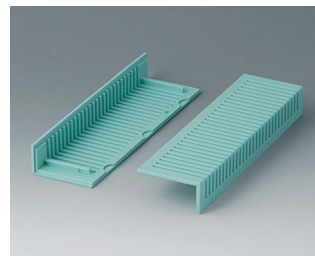
**B2021007**  
Side trims 220, with ventilation  
ABS (UL 94 HB)  
off-white RAL 9002



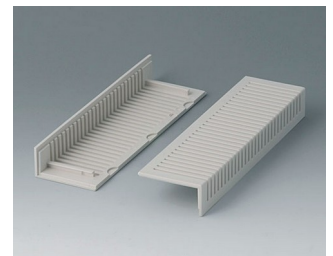
**B2022005**  
Side trims 160, without ventilation  
ABS  
lagoon



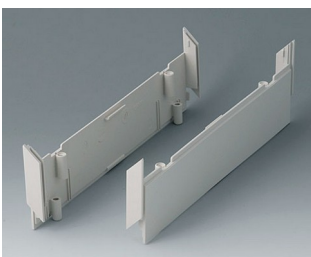
**B2022007**  
Side trims 160, without ventilation  
ABS (UL 94 HB)  
off-white RAL 9002



**B2023005**  
Side trims 160, with ventilation  
ABS  
lagoon



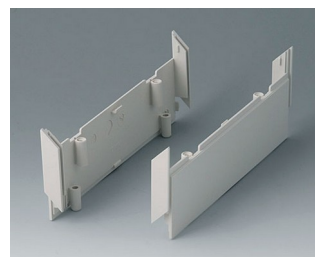
**B2023007**  
Side trims 160, with ventilation  
ABS (UL 94 HB)  
off-white RAL 9002



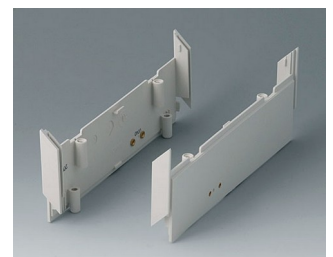
**B2030007**  
Side panels 220, without holes  
ABS (UL 94 HB)  
off-white RAL 9002



**B2030107**  
Side panels 220, with holes for handle  
ABS (UL 94 HB)  
off-white RAL 9002



**B2031007**  
Side panels 160, without holes  
ABS (UL 94 HB)  
off-white RAL 9002



**B2031107**  
Side panels 160, with holes for handle  
ABS (UL 94 HB)  
off-white RAL 9002

# MEDITEC



**B2116507**  
Handle bar E  
PA 6  
off-white RAL 9002



**B2129507**  
Handle bar D  
PA 6  
off-white RAL 9002



**B2210005**  
MEDITEC D 220, without handle  
bar  
ABS (UL 94 HB)  
off-white RAL 9002  
290x260x74mm  
IP 40



**B2210007**  
MEDITEC D 220, without handle  
bar  
ABS (UL 94 HB)  
off-white RAL 9002  
290x260x74mm  
IP 40



**B2210015**  
MEDITEC D 220, without handle  
bar  
ABS (UL 94 HB)  
off-white RAL 9002  
290x260x74mm  
IP 40



**B2210017**  
MEDITEC D 220, without handle  
bar  
ABS (UL 94 HB)  
off-white RAL 9002  
290x260x74mm  
IP 40



**B2210105**  
MEDITEC D 220, with handle  
bar  
ABS (UL 94 HB)  
off-white RAL 9002  
290x260x74mm  
IP 40



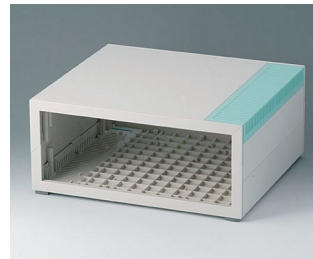
**B2210107**  
MEDITEC D 220, with handle  
bar  
ABS (UL 94 HB)  
off-white RAL 9002  
290x260x74mm  
IP 40



**B2210115**  
MEDITEC D 220, with handle  
bar  
ABS (UL 94 HB)  
off-white RAL 9002  
290x260x74mm  
IP 40



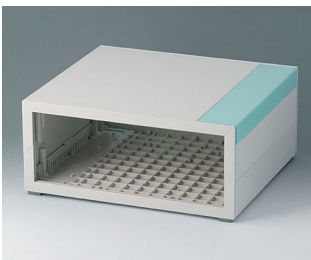
**B2210117**  
MEDITEC D 220, with handle  
bar  
ABS (UL 94 HB)  
off-white RAL 9002  
290x260x74mm  
IP 40



**B2210205**  
MEDITEC D 220, without handle  
bar  
ABS (UL 94 HB)  
off-white RAL 9002  
290x260x124mm  
IP 40



**B2210207**  
MEDITEC D 220, without handle  
bar  
ABS (UL 94 HB)  
off-white RAL 9002  
290x260x124mm  
IP 40



**B2210215**  
MEDITEC D 220, without handle  
bar  
ABS (UL 94 HB)  
off-white RAL 9002  
290x260x124mm  
IP 40



**B2210217**  
MEDITEC D 220, without handle  
bar  
ABS (UL 94 HB)  
off-white RAL 9002  
290x260x124mm  
IP 40



**B2210305**  
MEDITEC D 220, with handle  
bar  
ABS (UL 94 HB)  
off-white RAL 9002  
290x260x124mm  
IP 40



**B2210307**  
MEDITEC D 220, with handle  
bar  
ABS (UL 94 HB)  
off-white RAL 9002  
290x260x124mm  
IP 40

# MEDITEC



**B2210315**  
MEDITEC D 220, with handle bar  
ABS (UL 94 HB)  
off-white RAL 9002  
290x260x124mm  
IP 40



**B2210317**  
MEDITEC D 220, with handle bar  
ABS (UL 94 HB)  
off-white RAL 9002  
290x260x124mm  
IP 40



**B2211005**  
MEDITEC D 160, without handle bar  
ABS (UL 94 HB)  
off-white RAL 9002  
290x200x74mm  
IP 40



**B2211007**  
MEDITEC D 160, without handle bar  
ABS (UL 94 HB)  
off-white RAL 9002  
290x200x74mm  
IP 40



**B2211015**  
MEDITEC D 160, without handle bar  
ABS (UL 94 HB)  
off-white RAL 9002  
290x200x74mm  
IP 40



**B2211017**  
MEDITEC D 160, without handle bar  
ABS (UL 94 HB)  
off-white RAL 9002  
290x200x74mm  
IP 40



**B2211105**  
MEDITEC D 160, with handle bar  
ABS (UL 94 HB)  
off-white RAL 9002  
290x200x74mm  
IP 40



**B2211107**  
MEDITEC D 160, with handle bar  
ABS (UL 94 HB)  
off-white RAL 9002  
290x200x74mm  
IP 40



**B2211115**  
MEDITEC D 160, with handle bar  
ABS (UL 94 HB)  
off-white RAL 9002  
290x200x74mm  
IP 40



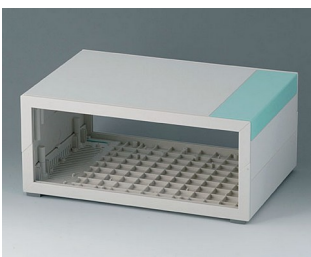
**B2211117**  
MEDITEC D 160, with handle bar  
ABS (UL 94 HB)  
off-white RAL 9002  
290x200x74mm  
IP 40



**B2211205**  
MEDITEC D 160, without handle bar  
ABS (UL 94 HB)  
off-white RAL 9002  
290x200x124mm  
IP 40



**B2211207**  
MEDITEC D 160, without handle bar  
ABS (UL 94 HB)  
off-white RAL 9002  
290x200x124mm  
IP 40



**B2211215**  
MEDITEC D 160, without handle bar  
ABS (UL 94 HB)  
off-white RAL 9002  
290x200x124mm  
IP 40



**B2211217**  
MEDITEC D 160, without handle bar  
ABS (UL 94 HB)  
off-white RAL 9002  
290x200x124mm  
IP 40



**B2211305**  
MEDITEC D 160, with handle bar  
ABS (UL 94 HB)  
off-white RAL 9002  
290x200x124mm  
IP 40



**B2211307**  
MEDITEC D 160, with handle bar  
ABS (UL 94 HB)  
off-white RAL 9002  
290x200x124mm  
IP 40

# MEDITEC



**B2211315**  
MEDITEC D 160, with handle bar  
ABS (UL 94 HB)  
off-white RAL 9002  
290x200x124mm  
IP 40



**B2211317**  
MEDITEC D 160, with handle bar  
ABS (UL 94 HB)  
off-white RAL 9002  
290x200x124mm  
IP 40



**B2212005**  
MEDITEC E 220, without handle bar  
ABS (UL 94 HB)  
off-white RAL 9002  
160x260x74mm  
IP 40



**B2212007**  
MEDITEC E 220, without handle bar  
ABS (UL 94 HB)  
off-white RAL 9002  
160x260x74mm  
IP 40



**B2212015**  
MEDITEC E 220, without handle bar  
ABS (UL 94 HB)  
off-white RAL 9002  
160x260x74mm  
IP 40



**B2212017**  
MEDITEC E 220, without handle bar  
ABS (UL 94 HB)  
off-white RAL 9002  
160x260x74mm  
IP 40



**B2212105**  
MEDITEC E 220, with handle bar  
ABS (UL 94 HB)  
off-white RAL 9002  
160x260x74mm  
IP 40



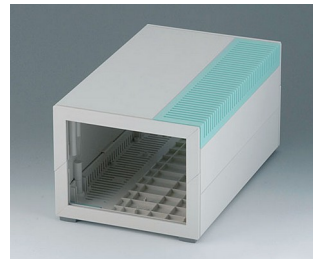
**B2212107**  
MEDITEC E 220, with handle bar  
ABS (UL 94 HB)  
off-white RAL 9002  
160x260x74mm  
IP 40



**B2212115**  
MEDITEC E 220, with handle bar  
ABS (UL 94 HB)  
off-white RAL 9002  
160x260x74mm  
IP 40



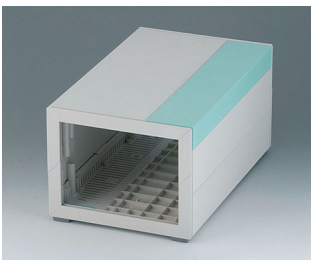
**B2212117**  
MEDITEC E 220, with handle bar  
ABS (UL 94 HB)  
off-white RAL 9002  
160x260x74mm  
IP 40



**B2212205**  
MEDITEC E 220, without handle bar  
ABS (UL 94 HB)  
off-white RAL 9002  
160x260x124mm  
IP 40



**B2212207**  
MEDITEC E 220, without handle bar  
ABS (UL 94 HB)  
off-white RAL 9002  
160x260x124mm  
IP 40



**B2212215**  
MEDITEC E 220, without handle bar  
ABS (UL 94 HB)  
off-white RAL 9002  
160x260x124mm  
IP 40



**B2212217**  
MEDITEC E 220, without handle bar  
ABS (UL 94 HB)  
off-white RAL 9002  
160x260x124mm  
IP 40



**B2212305**  
MEDITEC E 220, with handle bar  
ABS (UL 94 HB)  
off-white RAL 9002  
160x260x124mm  
IP 40



**B2212307**  
MEDITEC E 220, with handle bar  
ABS (UL 94 HB)  
off-white RAL 9002  
160x260x124mm  
IP 40

# MEDITEC



**B2212315**  
MEDITEC E 220, with handle bar  
ABS (UL 94 HB)  
off-white RAL 9002  
160x260x124mm  
IP 40



**B2212317**  
MEDITEC E 220, with handle bar  
ABS (UL 94 HB)  
off-white RAL 9002  
160x260x124mm  
IP 40



**B2213005**  
MEDITEC E 160, without handle bar  
ABS (UL 94 HB)  
off-white RAL 9002  
160x200x74mm  
IP 40



**B2213007**  
MEDITEC E 160, without handle bar  
ABS (UL 94 HB)  
off-white RAL 9002  
160x200x74mm  
IP 40



**B2213015**  
MEDITEC E 160, without handle bar  
ABS (UL 94 HB)  
off-white RAL 9002  
160x200x74mm  
IP 40



**B2213017**  
MEDITEC E 160, without handle bar  
ABS (UL 94 HB)  
off-white RAL 9002  
160x200x74mm  
IP 40



**B2213105**  
MEDITEC E 160, with handle bar  
ABS (UL 94 HB)  
off-white RAL 9002  
160x200x74mm  
IP 40



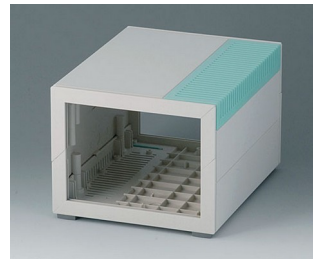
**B2213107**  
MEDITEC E 160, with handle bar  
ABS (UL 94 HB)  
off-white RAL 9002  
160x200x74mm  
IP 40



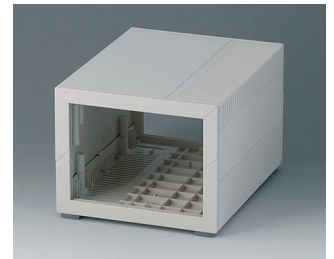
**B2213115**  
MEDITEC E 160, with handle bar  
ABS (UL 94 HB)  
off-white RAL 9002  
160x200x74mm  
IP 40



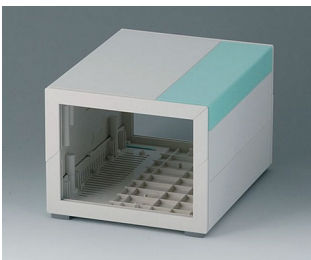
**B2213117**  
MEDITEC E 160, with handle bar  
ABS (UL 94 HB)  
off-white RAL 9002  
160x200x74mm  
IP 40



**B2213205**  
MEDITEC E 160, without handle bar  
ABS (UL 94 HB)  
off-white RAL 9002  
160x200x124mm  
IP 40



**B2213207**  
MEDITEC E 160, without handle bar  
ABS (UL 94 HB)  
off-white RAL 9002  
160x200x124mm  
IP 40



**B2213215**  
MEDITEC E 160, without handle bar  
ABS (UL 94 HB)  
off-white RAL 9002  
160x200x124mm  
IP 40



**B2213217**  
MEDITEC E 160, without handle bar  
ABS (UL 94 HB)  
off-white RAL 9002  
160x200x124mm  
IP 40



**B2213305**  
MEDITEC E 160, with handle bar  
ABS (UL 94 HB)  
off-white RAL 9002  
160x200x124mm  
IP 40



**B2213307**  
MEDITEC E 160, with handle bar  
ABS (UL 94 HB)  
off-white RAL 9002  
160x200x124mm  
IP 40

# MEDITEC

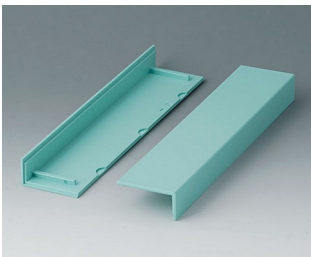


**B2213315**  
MEDITEC E 160, with handle  
bar  
ABS (UL 94 HB)  
off-white RAL 9002  
160x200x124mm  
IP 40



**B2213317**  
MEDITEC E 160, with handle  
bar  
ABS (UL 94 HB)  
off-white RAL 9002  
160x200x124mm  
IP 40

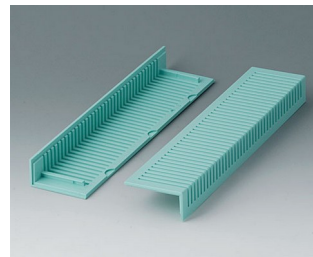
## System components to complete



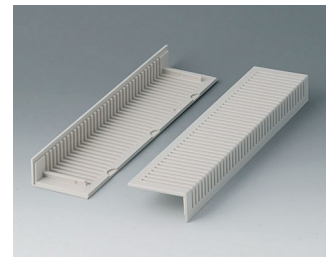
**B2020005**  
Side trims 220, without  
ventilation  
ABS  
lagoon



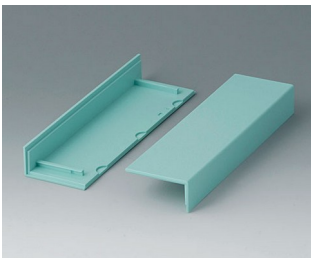
**B2020007**  
Side trims 220, without  
ventilation  
ABS (UL 94 HB)  
off-white RAL 9002



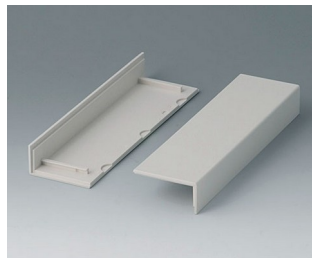
**B2021005**  
Side trims 220, with ventilation  
ABS  
lagoon



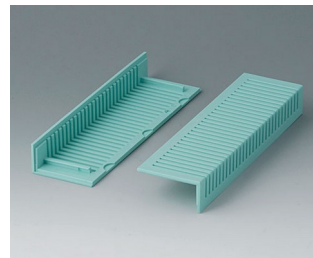
**B2021007**  
Side trims 220, with ventilation  
ABS (UL 94 HB)  
off-white RAL 9002



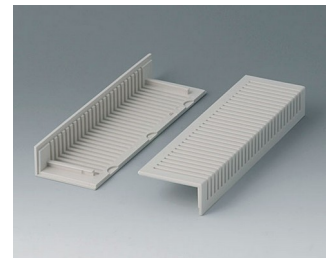
**B2022005**  
Side trims 160, without  
ventilation  
ABS  
lagoon



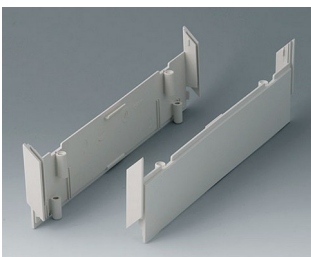
**B2022007**  
Side trims 160, without  
ventilation  
ABS (UL 94 HB)  
off-white RAL 9002



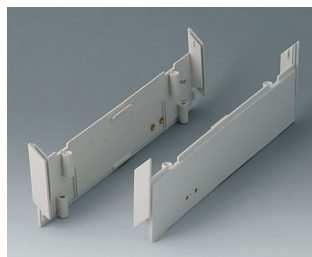
**B2023005**  
Side trims 160, with ventilation  
ABS  
lagoon



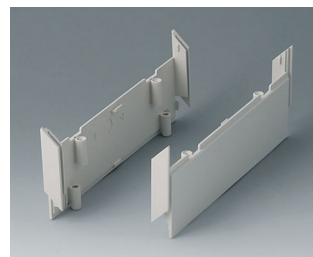
**B2023007**  
Side trims 160, with ventilation  
ABS (UL 94 HB)  
off-white RAL 9002



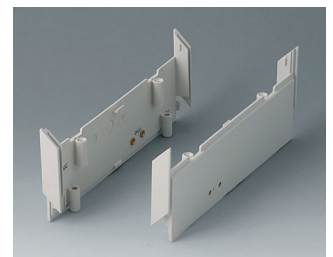
**B2030007**  
Side panels 220, without holes  
ABS (UL 94 HB)  
off-white RAL 9002



**B2030107**  
Side panels 220, with holes for  
handle  
ABS (UL 94 HB)  
off-white RAL 9002



**B2031007**  
Side panels 160, without holes  
ABS (UL 94 HB)  
off-white RAL 9002



**B2031107**  
Side panels 160, with holes for  
handle  
ABS (UL 94 HB)  
off-white RAL 9002

# MEDITEC



**B2116507**  
Handle bar E  
PA 6  
off-white RAL 9002



**B2129507**  
Handle bar D  
PA 6  
off-white RAL 9002

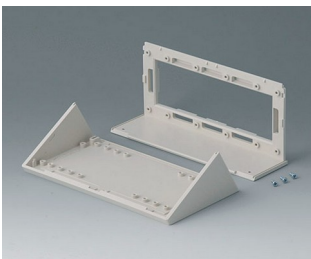


**B2133012**  
Wall mounting brackets  
PA 6  
volcano

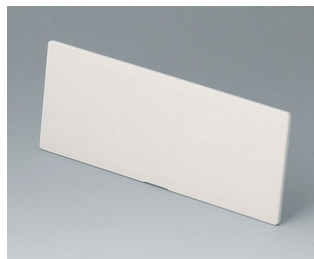


**B2135017**  
Connectors  
ABS (UL 94 HB)  
off-white RAL 9002

## Accessory to complete



**B2116007**  
Sloping control panel E  
ABS (UL 94 HB)  
off-white RAL 9002



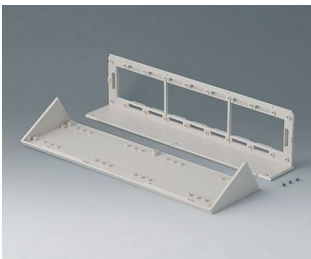
**B2116307**  
Front / rear panel E, flat  
ABS (UL 94 HB)  
off-white RAL 9002  
141.6x55.6x3mm



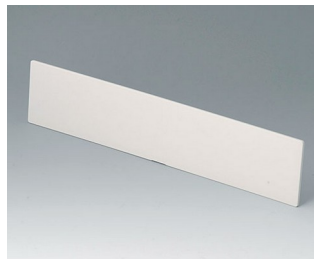
**B2116407**  
Front / rear panel Z1  
ABS (UL 94 HB)  
off-white RAL 9002  
141.6x105.6x3mm



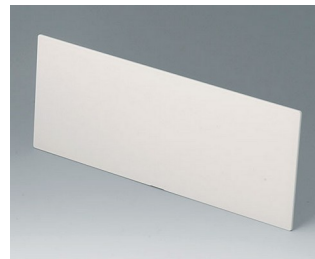
**B2116707**  
Infill panel E  
ABS (UL 94 HB)  
off-white RAL 9002  
142x55x5mm



**B2129007**  
Sloping control panel D  
ABS (UL 94 HB)  
off-white RAL 9002



**B2129307**  
Front / rear panel D, flat  
ABS (UL 94 HB)  
off-white RAL 9002  
271.6x55.6x3mm



**B2129407**  
Front / rear panel Z1  
ABS (UL 94 HB)  
off-white RAL 9002  
271.6x105.6x3mm

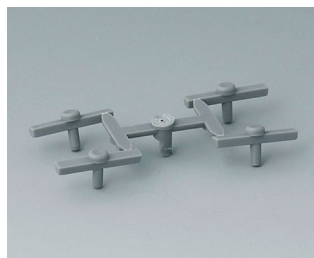


**B2129707**  
Infill panel D  
ABS (UL 94 HB)  
off-white RAL 9002  
272x55x5mm

## Accessory "wall/holder"



**B2133012**  
Wall mounting brackets  
PA 6  
volcano



**B2134012**  
Stacking elements  
PA 6  
volcano

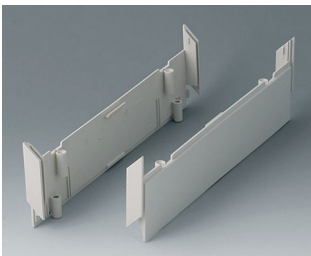
# MEDITEC

## Accessory "screws"

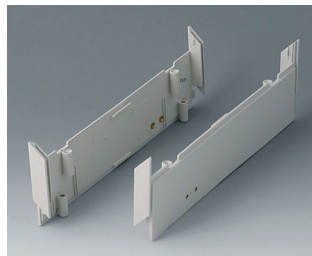


**A9199008**  
Set of screws

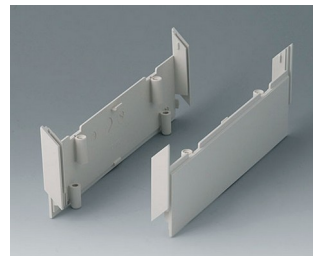
## Accessory



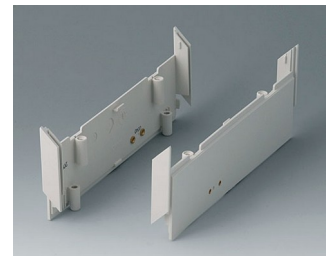
**B2030007**  
Side panels 220, without holes  
ABS (UL 94 HB)  
off-white RAL 9002



**B2030107**  
Side panels 220, with holes for  
handle  
ABS (UL 94 HB)  
off-white RAL 9002



**B2031007**  
Side panels 160, without holes  
ABS (UL 94 HB)  
off-white RAL 9002



**B2031107**  
Side panels 160, with holes for  
handle  
ABS (UL 94 HB)  
off-white RAL 9002



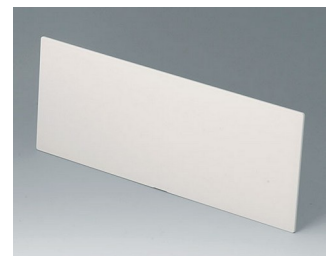
**B2116407**  
Front / rear panel Z1  
ABS (UL 94 HB)  
off-white RAL 9002  
141.6x105.6x3mm



**B2116507**  
Handle bar E  
PA 6  
off-white RAL 9002



**B2116707**  
Infill panel E  
ABS (UL 94 HB)  
off-white RAL 9002  
142x55x5mm



**B2129407**  
Front / rear panel Z1  
ABS (UL 94 HB)  
off-white RAL 9002  
271.6x105.6x3mm



**B2129507**  
Handle bar D  
PA 6  
off-white RAL 9002



**B2129707**  
Infill panel D  
ABS (UL 94 HB)  
off-white RAL 9002  
272x55x5mm



**B2134012**  
Stacking elements  
PA 6  
volcano



**B2135017**  
Connectors  
ABS (UL 94 HB)  
off-white RAL 9002

Subject to technical modification without notice. © by OKW Gehäusesysteme, Buchen/Germany.