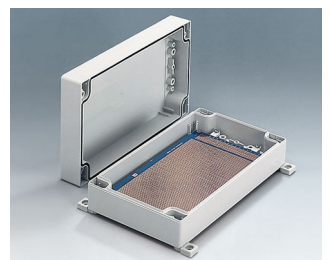
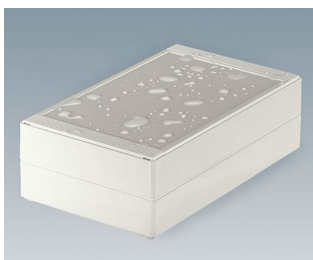
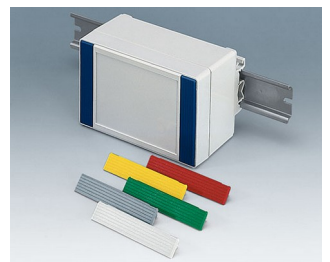
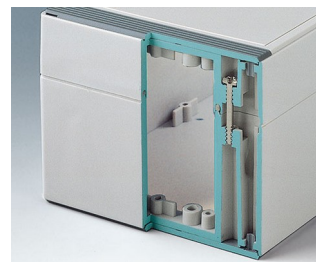
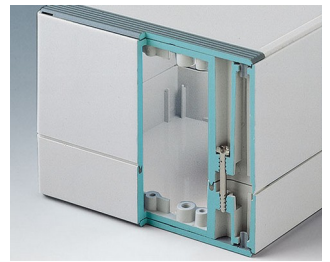


# ROBUST-BOX

## Universal IP 66 plastic enclosures

Both case shells of the ROBUST-BOX are equipped with pre-moulded threads. As a result, users can decide whether the flat or the high part of the case is used as the bottom part.

- versatile, sealed enclosures in eleven basic dimensions, different heights and two standard materials
- ABS (UL 94 HB), approved as a terminal mounting case
- PC (UL 94 HB), a solid and robust case, with high heat resistance for use in adverse environments
- RF permeable enclosure materials
- usable as a handheld, desktop or wall mount enclosure, and also as a DIN rail enclosure (with accessory DIN rail clips)
- easy-assembly; the case shells can be used as either the top or the base section
- both parts with recessed operating area for protecting membrane keypads or product labels
- the cover fixings are outside of the sealed area; the fixing screws are rust proof and captured in the top part
- hidden screw shafts for wall mounting or external wall mounting brackets
- coloured cover strips for coding (as an alternative to the standard version in light grey)
- internal fastening pillars for PCBs and components
- extensive range of accessories: case feet, hinge, fastening elements to DIN rails, PCB support for mounting pre-assembled PCB units etc.



# ROBUST-BOX

## Applications and Examples

These robust enclosures can be used for both electrical and electronic installations, for example heating, climate, ventilation, machine building and construction equipment. Also, push-button controllers, sensors and measuring equipment. Gateways.



Fill level measurement in process technology



Heating Control



Humidity and temperature measuring unit



Measuring, regulating and metering unit for water quality



Portable metal detector



Robust monitoring systems



Sensor for air pollution



Stationary gas detection system

## Customising Options

What do you still need for your own very personal product? We can supply enclosures and tuning knobs with all necessary modifications for fitting your electronic components.

Customising options for Robust-Box



Machining



Lacquering



Printing



Laser marking



Decor foils



Special material



EMC shielding



Installation / Assembly of accessories

# ROBUST-BOX

## Select Versions



**C0080801**  
Case shell 80, with groove  
ABS (UL 94 HB)  
light grey RAL 7035  
80x80x20mm



**C0080802**  
Case shell 80, with groove  
PC (UL 94 HB)  
light grey RAL 7035  
80x80x20mm



**C0081201**  
Case shell 80, with groove  
ABS (UL 94 HB)  
light grey RAL 7035  
120x80x20mm



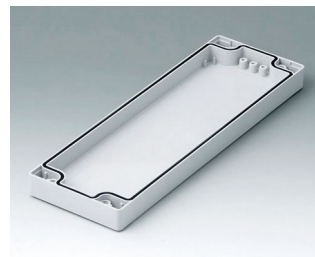
**C0081202**  
Case shell 80, with groove  
PC (UL 94 HB)  
light grey RAL 7035  
120x80x20mm



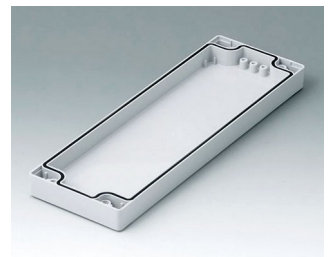
**C0081601**  
Case shell 80, with groove  
ABS (UL 94 HB)  
light grey RAL 7035  
160x80x20mm



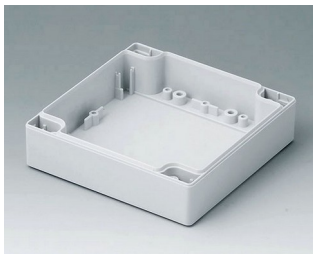
**C0081602**  
Case shell 80, with groove  
PC (UL 94 HB)  
light grey RAL 7035  
160x80x20mm



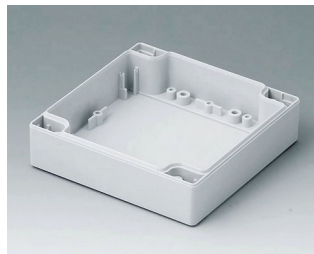
**C0082401**  
Case shell 80, with groove  
ABS (UL 94 HB)  
light grey RAL 7035  
240x80x20mm



**C0082402**  
Case shell 80, with groove  
PC (UL 94 HB)  
light grey RAL 7035  
240x80x20mm



**C0121201**  
Case shell 120, with tongue  
ABS (UL 94 HB)  
light grey RAL 7035  
120x120x30mm



**C0121202**  
Case shell 120, with tongue  
PC (UL 94 HB)  
light grey RAL 7035  
120x120x30mm



**C0122001**  
Case shell 120, with tongue  
ABS (UL 94 HB)  
light grey RAL 7035  
200x120x30mm



**C0122002**  
Case shell 120, with tongue  
PC (UL 94 HB)  
light grey RAL 7035  
200x120x30mm



**C0122401**  
Case shell 120, with tongue  
ABS (UL 94 HB)  
light grey RAL 7035  
240x120x30mm



**C0122402**  
Case shell 120, with tongue  
PC (UL 94 HB)  
light grey RAL 7035  
240x120x30mm



**C0161601**  
Case shell 160, with tongue  
ABS (UL 94 HB)  
light grey RAL 7035  
160x160x30mm



**C0161602**  
Case shell 160, with tongue  
PC (UL 94 HB)  
light grey RAL 7035  
160x160x30mm

# ROBUST-BOX



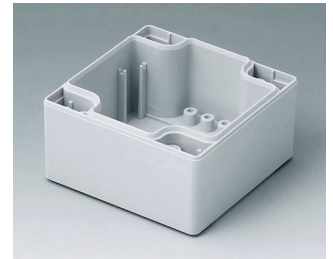
**C0162401**  
Case shell 160, with tongue  
ABS (UL 94 HB)  
light grey RAL 7035  
240x160x30mm



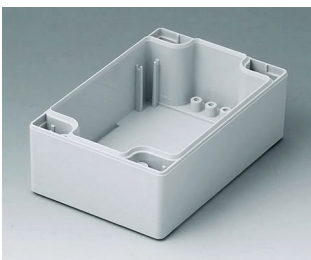
**C0162402**  
Case shell 160, with tongue  
PC (UL 94 HB)  
light grey RAL 7035  
240x160x30mm



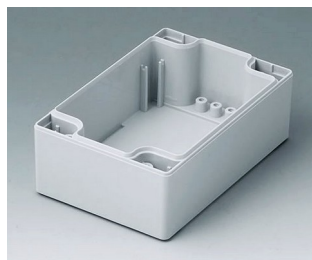
**C1080801**  
Case shell 80, with tongue  
ABS (UL 94 HB)  
light grey RAL 7035  
80x80x40mm



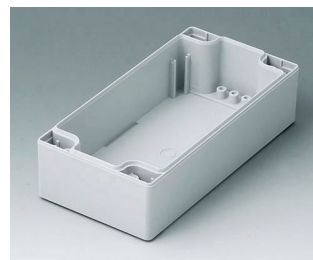
**C1080802**  
Case shell 80, with tongue  
PC (UL 94 HB)  
light grey RAL 7035  
80x80x40mm



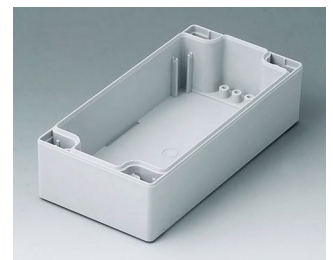
**C1081201**  
Case shell 80, with tongue  
ABS (UL 94 HB)  
light grey RAL 7035  
120x80x40mm



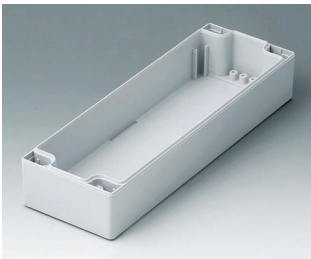
**C1081202**  
Case shell 80, with tongue  
PC (UL 94 HB)  
light grey RAL 7035  
120x80x40mm



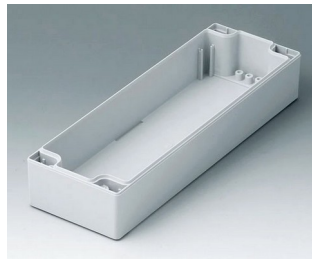
**C1081601**  
Case shell 80, with tongue  
ABS (UL 94 HB)  
light grey RAL 7035  
160x80x40mm



**C1081602**  
Case shell 80, with tongue  
PC (UL 94 HB)  
light grey RAL 7035  
160x80x40mm



**C1082401**  
Case shell 80, with tongue  
ABS (UL 94 HB)  
light grey RAL 7035  
240x80x40mm



**C1082402**  
Case shell 80, with tongue  
PC (UL 94 HB)  
light grey RAL 7035  
240x80x40mm



**C1121201**  
Case shell 120, with groove  
ABS (UL 94 HB)  
light grey RAL 7035  
120x120x30mm



**C1121202**  
Case shell 120, with groove  
PC (UL 94 HB)  
light grey RAL 7035  
120x120x30mm



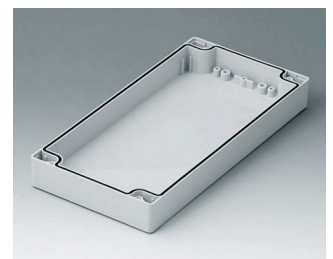
**C1122001**  
Case shell 120, with groove  
ABS (UL 94 HB)  
light grey RAL 7035  
200x120x30mm



**C1122002**  
Case shell 120, with groove  
PC (UL 94 HB)  
light grey RAL 7035  
200x120x30mm



**C1122401**  
Case shell 120, with groove  
ABS (UL 94 HB)  
light grey RAL 7035  
240x120x30mm



**C1122402**  
Case shell 120, with groove  
PC (UL 94 HB)  
light grey RAL 7035  
240x120x30mm

# ROBUST-BOX



**C1161601**  
Case shell 160, with groove  
ABS (UL 94 HB)  
light grey RAL 7035  
160x160x30mm



**C1161602**  
Case shell 160, with groove  
PC (UL 94 HB)  
light grey RAL 7035  
160x160x30mm



**C1162401**  
Case shell 160, with groove  
ABS (UL 94 HB)  
light grey RAL 7035  
240x160x30mm



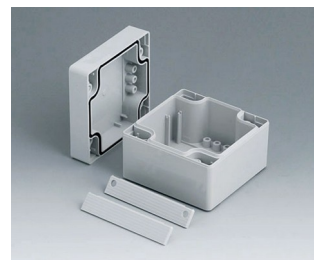
**C1162402**  
Case shell 160, with groove  
PC (UL 94 HB)  
light grey RAL 7035  
240x160x30mm



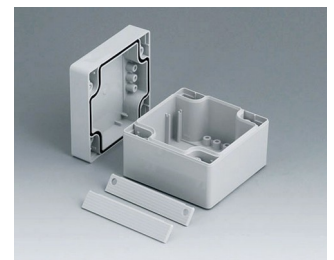
**C1203001**  
Case shell 200, with tongue  
ABS (UL 94 HB)  
light grey RAL 7035  
300x200x40mm



**C1243601**  
Case shell 240, with tongue  
ABS (UL 94 HB)  
light grey RAL 7035  
360x240x40mm



**C2008081**  
ROBUST-BOX WIDTH 80, Vers.  
I  
ABS (UL 94 HB)  
light grey RAL 7035  
80x80x60mm  
IP 66



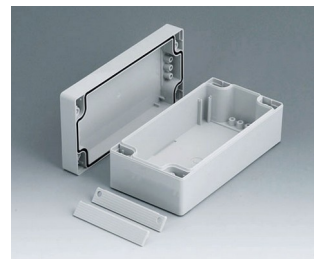
**C2008082**  
ROBUST-BOX WIDTH 80, Vers.  
II  
PC (UL 94 HB)  
light grey RAL 7035  
80x80x60mm  
IP 66



**C2008121**  
ROBUST-BOX WIDTH 80, Vers.  
I  
ABS (UL 94 HB)  
light grey RAL 7035  
120x80x60mm  
IP 66



**C2008122**  
ROBUST-BOX WIDTH 80, Vers.  
II  
PC (UL 94 HB)  
light grey RAL 7035  
120x80x60mm  
IP 66



**C2008161**  
ROBUST-BOX WIDTH 80, Vers.  
I  
ABS (UL 94 HB)  
light grey RAL 7035  
160x80x60mm  
IP 66



**C2008162**  
ROBUST-BOX WIDTH 80, Vers.  
II  
PC (UL 94 HB)  
light grey RAL 7035  
160x80x60mm  
IP 66



**C2008241**  
ROBUST-BOX WIDTH 80, Vers.  
I  
ABS (UL 94 HB)  
light grey RAL 7035  
240x80x60mm  
IP 66



**C2008242**  
ROBUST-BOX WIDTH 80, Vers.  
II  
PC (UL 94 HB)  
light grey RAL 7035  
240x80x60mm  
IP 66



**C2012121**  
ROBUST-BOX WIDTH 120,  
Vers. I  
ABS (UL 94 HB)  
light grey RAL 7035  
120x120x60mm  
IP 66



**C2012122**  
ROBUST-BOX WIDTH 120,  
Vers. II  
PC (UL 94 HB)  
light grey RAL 7035  
120x120x60mm  
IP 66

# ROBUST-BOX



**C2012201**  
ROBUST-BOX WIDTH 120,  
Vers. I  
ABS (UL 94 HB)  
light grey RAL 7035  
200x120x60mm  
IP 66



**C2012202**  
ROBUST-BOX WIDTH 120,  
Vers. II  
PC (UL 94 HB)  
light grey RAL 7035  
200x120x60mm  
IP 66



**C2012241**  
ROBUST-BOX WIDTH 120,  
Vers. I  
ABS (UL 94 HB)  
light grey RAL 7035  
240x120x60mm  
IP 66



**C2012242**  
ROBUST-BOX WIDTH 120,  
Vers. II  
PC (UL 94 HB)  
light grey RAL 7035  
240x120x60mm  
IP 66



**C2016161**  
ROBUST-BOX WIDTH 160,  
Vers. I  
ABS (UL 94 HB)  
light grey RAL 7035  
160x160x60mm  
IP 66



**C2016162**  
ROBUST-BOX WIDTH 160,  
Vers. II  
PC (UL 94 HB)  
light grey RAL 7035  
160x160x60mm  
IP 66



**C2016241**  
ROBUST-BOX WIDTH 160,  
Vers. I  
ABS (UL 94 HB)  
light grey RAL 7035  
240x160x60mm  
IP 66



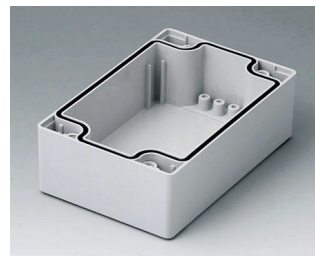
**C2016242**  
ROBUST-BOX WIDTH 160,  
Vers. II  
PC (UL 94 HB)  
light grey RAL 7035  
240x160x60mm  
IP 66



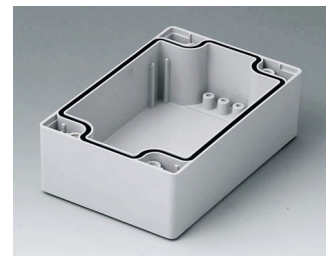
**C2080801**  
Case shell 80, with groove  
ABS (UL 94 HB)  
light grey RAL 7035  
80x80x40mm



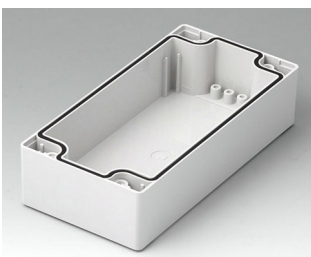
**C2080802**  
Case shell 80, with groove  
PC (UL 94 HB)  
light grey RAL 7035  
80x80x40mm



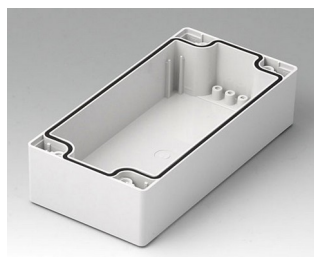
**C2081201**  
Case shell 80, with groove  
ABS (UL 94 HB)  
light grey RAL 7035  
120x80x40mm



**C2081202**  
Case shell 80, with groove  
PC (UL 94 HB)  
light grey RAL 7035  
120x80x40mm



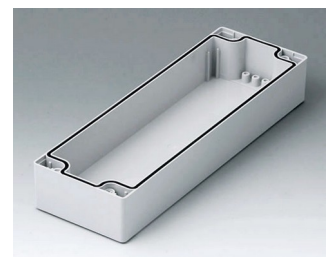
**C2081601**  
Case shell 80, with groove  
ABS (UL 94 HB)  
light grey RAL 7035  
160x80x40mm



**C2081602**  
Case shell 80, with groove  
PC (UL 94 HB)  
light grey RAL 7035  
160x80x40mm

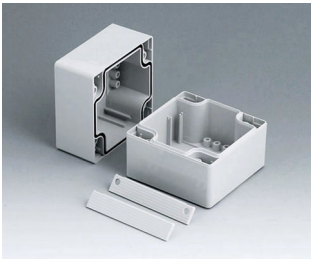


**C2082401**  
Case shell 80, with groove  
ABS (UL 94 HB)  
light grey RAL 7035  
240x80x40mm

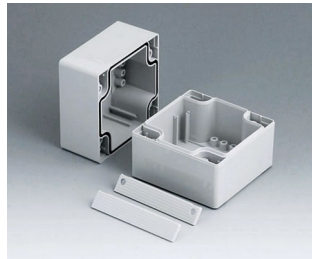


**C2082402**  
Case shell 80, with groove  
PC (UL 94 HB)  
light grey RAL 7035  
240x80x40mm

# ROBUST-BOX



**C2108081**  
ROBUST-BOX WIDTH 80, Vers. I  
ABS (UL 94 HB)  
light grey RAL 7035  
80x80x80mm  
IP 66



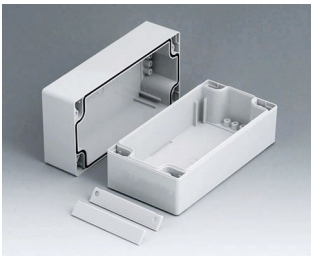
**C2108082**  
ROBUST-BOX WIDTH 80, Vers. II  
PC (UL 94 HB)  
light grey RAL 7035  
80x80x80mm  
IP 66



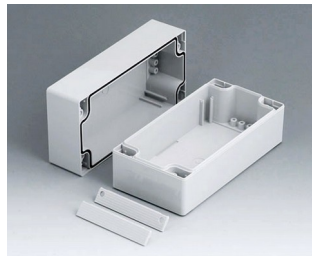
**C2108121**  
ROBUST-BOX WIDTH 80, Vers. I  
ABS (UL 94 HB)  
light grey RAL 7035  
120x80x80mm  
IP 66



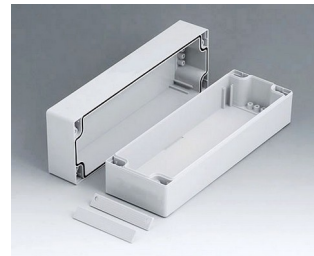
**C2108122**  
ROBUST-BOX WIDTH 80, Vers. II  
PC (UL 94 HB)  
light grey RAL 7035  
120x80x80mm  
IP 66



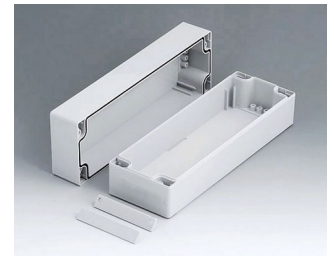
**C2108161**  
ROBUST-BOX WIDTH 80, Vers. I  
ABS (UL 94 HB)  
light grey RAL 7035  
160x80x80mm  
IP 66



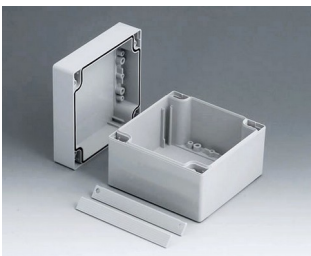
**C2108162**  
ROBUST-BOX WIDTH 80, Vers. II  
PC (UL 94 HB)  
light grey RAL 7035  
160x80x80mm  
IP 66



**C2108241**  
ROBUST-BOX WIDTH 80, Vers. I  
ABS (UL 94 HB)  
light grey RAL 7035  
240x80x80mm  
IP 66



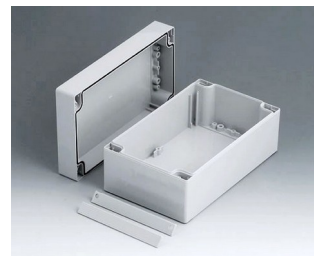
**C2108242**  
ROBUST-BOX WIDTH 80, Vers. II  
PC (UL 94 HB)  
light grey RAL 7035  
240x80x80mm  
IP 66



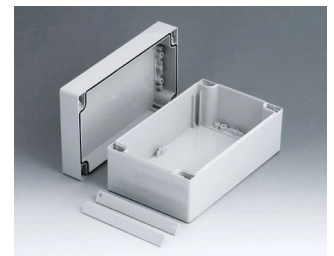
**C2112121**  
ROBUST-BOX WIDTH 120, Vers. I  
ABS (UL 94 HB)  
light grey RAL 7035  
120x120x90mm  
IP 66



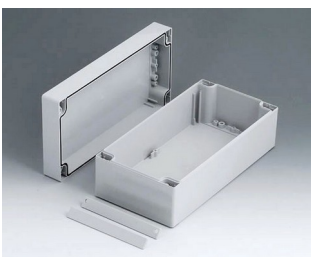
**C2112122**  
ROBUST-BOX WIDTH 120, Vers. II  
PC (UL 94 HB)  
light grey RAL 7035  
120x120x90mm  
IP 66



**C2112201**  
ROBUST-BOX WIDTH 120, Vers. I  
ABS (UL 94 HB)  
light grey RAL 7035  
200x120x90mm  
IP 66



**C2112202**  
ROBUST-BOX WIDTH 120, Vers. II  
PC (UL 94 HB)  
light grey RAL 7035  
200x120x90mm  
IP 66



**C2112241**  
ROBUST-BOX WIDTH 120, Vers. I  
ABS (UL 94 HB)  
light grey RAL 7035  
240x120x90mm  
IP 66



**C2112242**  
ROBUST-BOX WIDTH 120, Vers. II  
PC (UL 94 HB)  
light grey RAL 7035  
240x120x90mm  
IP 66



**C2116161**  
ROBUST-BOX WIDTH 160, Vers. I  
ABS (UL 94 HB)  
light grey RAL 7035  
160x160x90mm  
IP 66



**C2116162**  
ROBUST-BOX WIDTH 160, Vers. II  
PC (UL 94 HB)  
light grey RAL 7035  
160x160x90mm  
IP 66

# ROBUST-BOX



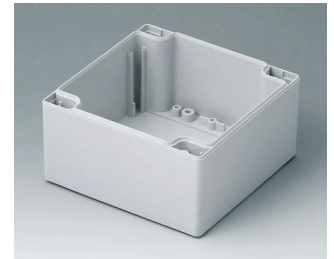
**C2116241**  
ROBUST-BOX WIDTH 160,  
Vers. I  
ABS (UL 94 HB)  
light grey RAL 7035  
240x160x90mm  
IP 66



**C2116242**  
ROBUST-BOX WIDTH 160,  
Vers. II  
PC (UL 94 HB)  
light grey RAL 7035  
240x160x90mm  
IP 66



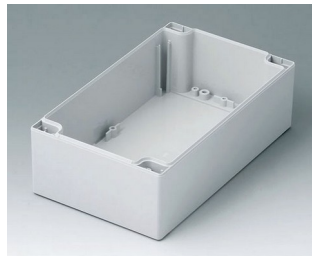
**C2120301**  
ROBUST-BOX WIDTH 200,  
Vers. I  
ABS (UL 94 HB)  
light grey RAL 7035  
300x200x80mm  
IP 66



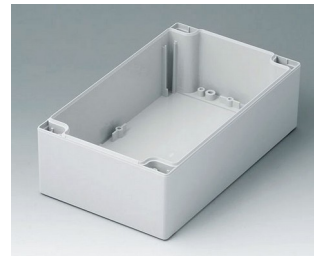
**C2121201**  
Case shell 120, with tongue  
ABS (UL 94 HB)  
light grey RAL 7035  
120x120x60mm



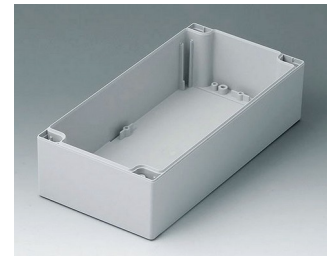
**C2121202**  
Case shell 120, with tongue  
PC (UL 94 HB)  
light grey RAL 7035  
120x120x60mm



**C2122001**  
Case shell 120, with tongue  
ABS (UL 94 HB)  
light grey RAL 7035  
200x120x60mm



**C2122002**  
Case shell 120, with tongue  
PC (UL 94 HB)  
light grey RAL 7035  
200x120x60mm



**C2122401**  
Case shell 120, with tongue  
ABS (UL 94 HB)  
light grey RAL 7035  
240x120x60mm



**C2122402**  
Case shell 120, with tongue  
PC (UL 94 HB)  
light grey RAL 7035  
240x120x60mm



**C2124361**  
ROBUST-BOX WIDTH 240,  
Vers. I  
ABS (UL 94 HB)  
light grey RAL 7035  
360x240x80mm  
IP 66



**C2161601**  
Case shell 160, with tongue  
ABS (UL 94 HB)  
light grey RAL 7035  
160x160x60mm



**C2161602**  
Case shell 160, with tongue  
PC (UL 94 HB)  
light grey RAL 7035  
160x160x60mm



**C2162401**  
Case shell 160, with tongue  
ABS (UL 94 HB)  
light grey RAL 7035  
240x160x60mm



**C2162402**  
Case shell 160, with tongue  
PC (UL 94 HB)  
light grey RAL 7035  
240x160x60mm



**C2203001**  
Case shell 200, with groove  
ABS (UL 94 HB)  
light grey RAL 7035  
300x200x40mm



**C2243601**  
Case shell 240, with groove  
ABS (UL 94 HB)  
light grey RAL 7035  
360x240x40mm

# ROBUST-BOX



**C2416241**  
ROBUST-BOX WIDTH 160,  
Vers. I  
ABS (UL 94 HB)  
light grey RAL 7035  
240x160x120mm  
IP 66



**C2416242**  
ROBUST-BOX WIDTH 160,  
Vers. II  
PC (UL 94 HB)  
light grey RAL 7035  
240x160x120mm  
IP 66



**C2420301**  
ROBUST-BOX WIDTH 200,  
Vers. I  
ABS (UL 94 HB)  
light grey RAL 7035  
300x200x120mm  
IP 66



**C2424361**  
ROBUST-BOX WIDTH 240,  
Vers. I  
ABS (UL 94 HB)  
light grey RAL 7035  
360x240x120mm  
IP 66



**C2520301**  
ROBUST-BOX WIDTH 200,  
Vers. I  
ABS (UL 94 HB)  
light grey RAL 7035  
300x200x160mm  
IP 66



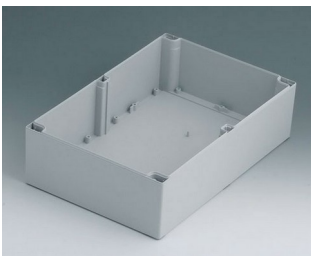
**C2524361**  
ROBUST-BOX WIDTH 240,  
Vers. I  
ABS (UL 94 HB)  
light grey RAL 7035  
360x240x160mm  
IP 66



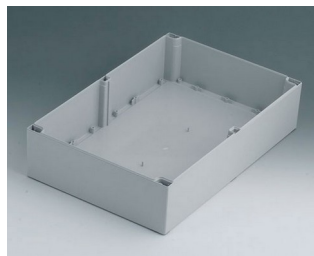
**C3162401**  
Case shell 160, with groove  
ABS (UL 94 HB)  
light grey RAL 7035  
240x160x60mm



**C3162402**  
Case shell 160, with groove  
PC (UL 94 HB)  
light grey RAL 7035  
240x160x60mm



**C4203001**  
Case shell 200, with tongue  
ABS (UL 94 HB)  
light grey RAL 7035  
300x200x80mm



**C4243601**  
Case shell 240, with tongue  
ABS (UL 94 HB)  
light grey RAL 7035  
360x240x80mm



**C5203001**  
Case shell 200, with groove  
ABS (UL 94 HB)  
light grey RAL 7035  
300x200x80mm



**C5243601**  
Case shell 240, with groove  
ABS (UL 94 HB)  
light grey RAL 7035  
360x240x80mm

## System components to complete



**C0080801**  
Case shell 80, with groove  
ABS (UL 94 HB)  
light grey RAL 7035  
80x80x20mm



**C0080802**  
Case shell 80, with groove  
PC (UL 94 HB)  
light grey RAL 7035  
80x80x20mm



**C0081201**  
Case shell 80, with groove  
ABS (UL 94 HB)  
light grey RAL 7035  
120x80x20mm



**C0081202**  
Case shell 80, with groove  
PC (UL 94 HB)  
light grey RAL 7035  
120x80x20mm

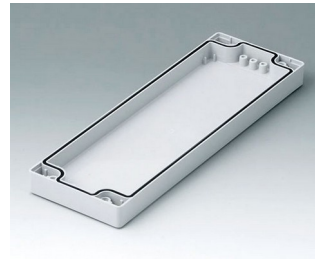
# ROBUST-BOX



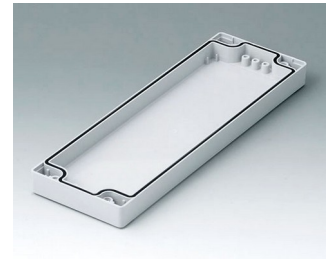
**C0081601**  
Case shell 80, with groove  
ABS (UL 94 HB)  
light grey RAL 7035  
160x80x20mm



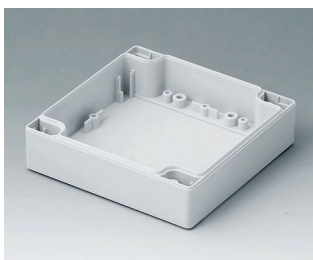
**C0081602**  
Case shell 80, with groove  
PC (UL 94 HB)  
light grey RAL 7035  
160x80x20mm



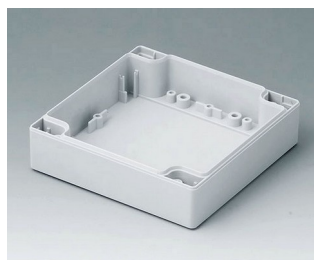
**C0082401**  
Case shell 80, with groove  
ABS (UL 94 HB)  
light grey RAL 7035  
240x80x20mm



**C0082402**  
Case shell 80, with groove  
PC (UL 94 HB)  
light grey RAL 7035  
240x80x20mm



**C0121201**  
Case shell 120, with tongue  
ABS (UL 94 HB)  
light grey RAL 7035  
120x120x30mm



**C0121202**  
Case shell 120, with tongue  
PC (UL 94 HB)  
light grey RAL 7035  
120x120x30mm



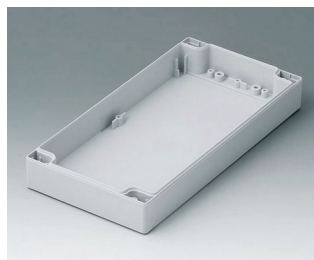
**C0122001**  
Case shell 120, with tongue  
ABS (UL 94 HB)  
light grey RAL 7035  
200x120x30mm



**C0122002**  
Case shell 120, with tongue  
PC (UL 94 HB)  
light grey RAL 7035  
200x120x30mm



**C0122401**  
Case shell 120, with tongue  
ABS (UL 94 HB)  
light grey RAL 7035  
240x120x30mm



**C0122402**  
Case shell 120, with tongue  
PC (UL 94 HB)  
light grey RAL 7035  
240x120x30mm



**C0161601**  
Case shell 160, with tongue  
ABS (UL 94 HB)  
light grey RAL 7035  
160x160x30mm



**C0161602**  
Case shell 160, with tongue  
PC (UL 94 HB)  
light grey RAL 7035  
160x160x30mm



**C0162401**  
Case shell 160, with tongue  
ABS (UL 94 HB)  
light grey RAL 7035  
240x160x30mm



**C0162402**  
Case shell 160, with tongue  
PC (UL 94 HB)  
light grey RAL 7035  
240x160x30mm

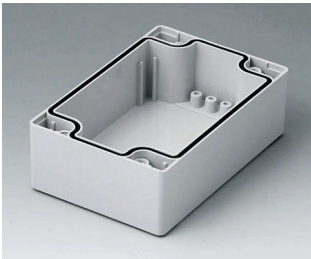


**C2080801**  
Case shell 80, with groove  
ABS (UL 94 HB)  
light grey RAL 7035  
80x80x40mm

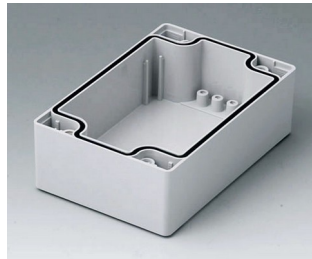


**C2080802**  
Case shell 80, with groove  
PC (UL 94 HB)  
light grey RAL 7035  
80x80x40mm

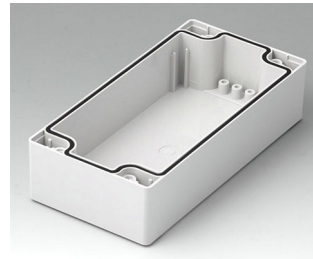
# ROBUST-BOX



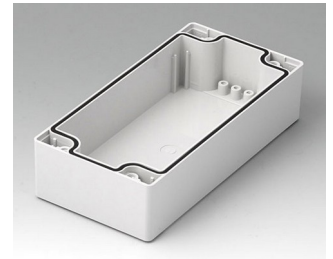
**C2081201**  
Case shell 80, with groove  
ABS (UL 94 HB)  
light grey RAL 7035  
120x80x40mm



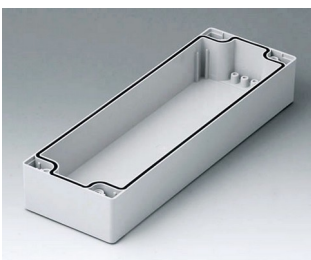
**C2081202**  
Case shell 80, with groove  
PC (UL 94 HB)  
light grey RAL 7035  
120x80x40mm



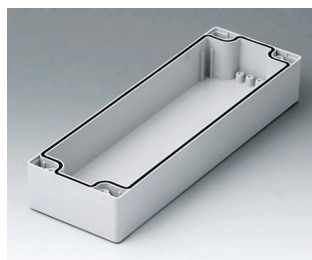
**C2081601**  
Case shell 80, with groove  
ABS (UL 94 HB)  
light grey RAL 7035  
160x80x40mm



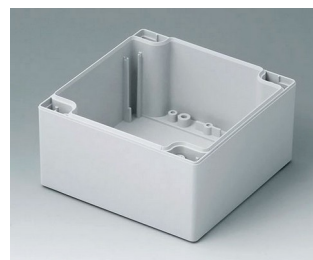
**C2081602**  
Case shell 80, with groove  
PC (UL 94 HB)  
light grey RAL 7035  
160x80x40mm



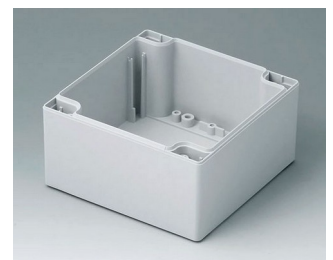
**C2082401**  
Case shell 80, with groove  
ABS (UL 94 HB)  
light grey RAL 7035  
240x80x40mm



**C2082402**  
Case shell 80, with groove  
PC (UL 94 HB)  
light grey RAL 7035  
240x80x40mm



**C2121201**  
Case shell 120, with tongue  
ABS (UL 94 HB)  
light grey RAL 7035  
120x120x60mm



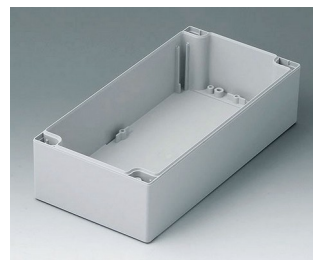
**C2121202**  
Case shell 120, with tongue  
PC (UL 94 HB)  
light grey RAL 7035  
120x120x60mm



**C2122001**  
Case shell 120, with tongue  
ABS (UL 94 HB)  
light grey RAL 7035  
200x120x60mm



**C2122002**  
Case shell 120, with tongue  
PC (UL 94 HB)  
light grey RAL 7035  
200x120x60mm



**C2122401**  
Case shell 120, with tongue  
ABS (UL 94 HB)  
light grey RAL 7035  
240x120x60mm



**C2122402**  
Case shell 120, with tongue  
PC (UL 94 HB)  
light grey RAL 7035  
240x120x60mm



**C2161601**  
Case shell 160, with tongue  
ABS (UL 94 HB)  
light grey RAL 7035  
160x160x60mm



**C2161602**  
Case shell 160, with tongue  
PC (UL 94 HB)  
light grey RAL 7035  
160x160x60mm



**C2162401**  
Case shell 160, with tongue  
ABS (UL 94 HB)  
light grey RAL 7035  
240x160x60mm



**C2162402**  
Case shell 160, with tongue  
PC (UL 94 HB)  
light grey RAL 7035  
240x160x60mm

# ROBUST-BOX



**C2203001**  
Case shell 200, with groove  
ABS (UL 94 HB)  
light grey RAL 7035  
300x200x40mm



**C2243601**  
Case shell 240, with groove  
ABS (UL 94 HB)  
light grey RAL 7035  
360x240x40mm



**C2299001**  
Assembly kit



**C2299002**  
Assembly kit



**C5203001**  
Case shell 200, with groove  
ABS (UL 94 HB)  
light grey RAL 7035  
300x200x80mm



**C5243601**  
Case shell 240, with groove  
ABS (UL 94 HB)  
light grey RAL 7035  
360x240x80mm

## Accessory to complete



**C2200801**  
Cover strips 80, without holes  
PC (UL 94 HB)  
light grey RAL 7035



**C2201082**  
Cover strips 80  
PC (UL 94 HB)  
silver grey RAL 7001



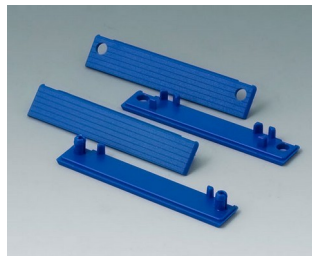
**C2201084**  
Cover strips 80  
PC (UL 94 HB)  
red RAL 3020



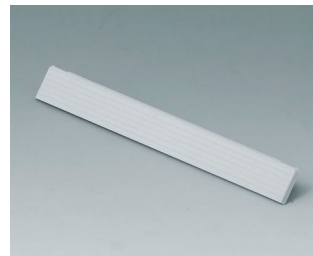
**C2201085**  
Cover strips 80  
PC (UL 94 HB)  
yellow RAL 1023



**C2201086**  
Cover strips 80  
PC (UL 94 HB)  
green RAL 6024



**C2201087**  
Cover strips 80  
PC (UL 94 HB)  
blue RAL 5017



**C2201201**  
Cover strips 120, without holes  
PC (UL 94 HB)  
light grey RAL 7035



**C2201601**  
Cover strips 160, without holes  
PC (UL 94 HB)  
light grey RAL 7035

# ROBUST-BOX



**C2202001**  
Cover strips 200, without holes  
PC (UL 94 HB)  
light grey RAL 7035



**C2202401**  
Cover strips 240, without holes  
PC (UL 94 HB)  
light grey RAL 7035



**C2203123**  
Cover strips 120  
PC (UL 94 HB)  
silver grey RAL 7001



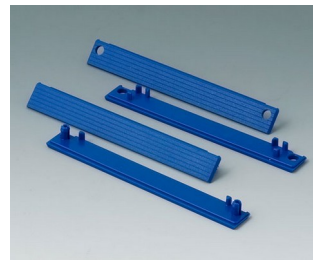
**C2203124**  
Cover strips 120  
PC (UL 94 HB)  
red RAL 3020



**C2203125**  
Cover strips 120  
PC (UL 94 HB)  
yellow RAL 1023



**C2203126**  
Cover strips 120  
PC (UL 94 HB)  
green RAL 6024



**C2203127**  
Cover strips 120  
PC (UL 94 HB)  
blue RAL 5017



**C2204162**  
Cover strips 160  
PC (UL 94 HB)  
silver grey RAL 7001



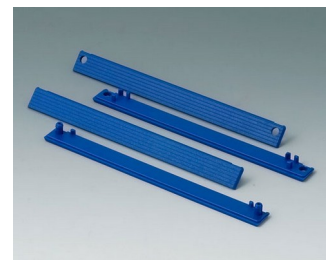
**C2204164**  
Cover strips 160  
PC (UL 94 HB)  
red RAL 3020



**C2204165**  
Cover strips 160  
PC (UL 94 HB)  
yellow RAL 1023



**C2204166**  
Cover strips 160  
PC (UL 94 HB)  
green RAL 6024



**C2204167**  
Cover strips 160  
PC (UL 94 HB)  
blue RAL 5017



**C2210801**  
Cover strips 80, with holes  
PC (UL 94 HB)  
light grey RAL 7035



**C2211201**  
Cover strips 120, with holes  
PC (UL 94 HB)  
light grey RAL 7035



**C2211601**  
Cover strips 160, with holes  
PC (UL 94 HB)  
light grey RAL 7035



**C2212001**  
Cover strips 200, with holes  
PC (UL 94 HB)  
light grey RAL 7035

# ROBUST-BOX



**C2212401**  
Cover strips 240, with holes  
PC (UL 94 HB)  
light grey RAL 7035

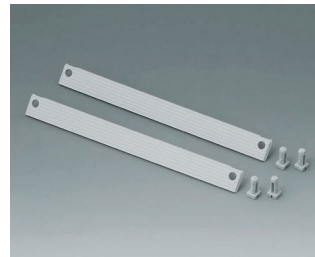
## Accessory "protection"



**C2299040**  
Security plug  
PA 6 (UL 94 HB)  
light grey RAL 7035



**C2299042**  
Security kit width 120  
PA 6 (UL 94 HB)  
light grey RAL 7035



**C2299046**  
Security kit width 160  
PA 6 (UL 94 HB)  
light grey RAL 7035



**C2299048**  
Security kit width 80  
PA 6 (UL 94 HB)  
light grey RAL 7035



**C2306917**  
Pressure equalisation element  
M6x0.75  
PA 6 (UL 94 HB)  
light grey RAL 7035  
IP 56



**C2310917**  
Pressure equalisation element  
M10x1  
PA 6 (UL 94 HB)  
light grey RAL 7035  
IP 56

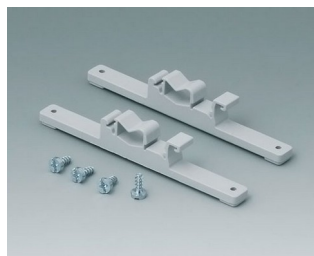


**C2320137**  
Cable grommet  
EPDM  
light grey RAL 7035  
IP 67

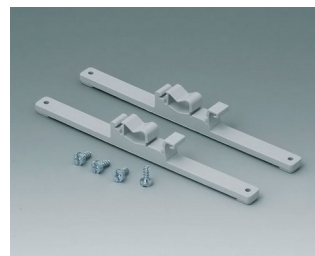
## Accessory "wall/holder"



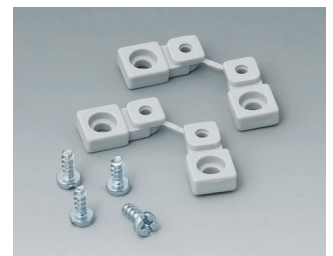
**C2201088**  
Fastening elements to DIN-Rails  
PA 6  
light grey RAL 7035



**C2203128**  
Fastening elements to DIN-Rails  
PA 6  
light grey RAL 7035



**C2204168**  
Fastening elements to DIN-Rails  
PA 6  
light grey RAL 7035



**C2299028**  
Wall mounting brackets  
PA 6 (UL 94 HB)  
light grey RAL 7035

# ROBUST-BOX



**C2299031**  
Securing hinge for the cover  
PP  
natural-coloured



**C2299088**  
Hinge  
PA 6  
light grey RAL 7035

## Accessory "screws"



**A0306031**  
Self-tapping screws 3 x 6 mm  
(PZ1)

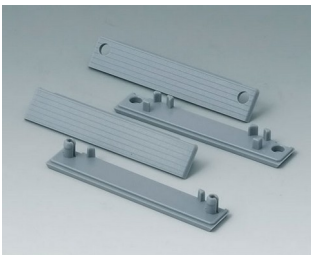


**A0308031**  
Self-tapping screws 3 x 8 mm  
(PZ1)



**A0308132**  
Self-tapping screw 3 x 8 mm  
(T10)  
Stainless steel

## Accessory



**C2201082**  
Cover strips 80  
PC (UL 94 HB)  
silver grey RAL 7001



**C2201084**  
Cover strips 80  
PC (UL 94 HB)  
red RAL 3020



**C2201085**  
Cover strips 80  
PC (UL 94 HB)  
yellow RAL 1023



**C2201086**  
Cover strips 80  
PC (UL 94 HB)  
green RAL 6024



**C2201087**  
Cover strips 80  
PC (UL 94 HB)  
blue RAL 5017



**C2203123**  
Cover strips 120  
PC (UL 94 HB)  
silver grey RAL 7001



**C2203124**  
Cover strips 120  
PC (UL 94 HB)  
red RAL 3020

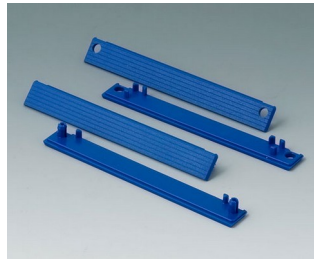


**C2203125**  
Cover strips 120  
PC (UL 94 HB)  
yellow RAL 1023

# ROBUST-BOX



**C2203126**  
 Cover strips 120  
 PC (UL 94 HB)  
 green RAL 6024



**C2203127**  
 Cover strips 120  
 PC (UL 94 HB)  
 blue RAL 5017



**C2204162**  
 Cover strips 160  
 PC (UL 94 HB)  
 silver grey RAL 7001



**C2204164**  
 Cover strips 160  
 PC (UL 94 HB)  
 red RAL 3020



**C2204165**  
 Cover strips 160  
 PC (UL 94 HB)  
 yellow RAL 1023



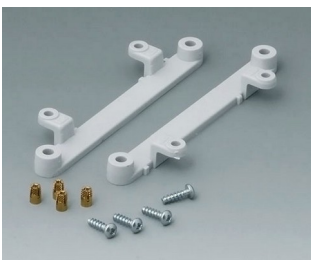
**C2204166**  
 Cover strips 160  
 PC (UL 94 HB)  
 green RAL 6024



**C2204167**  
 Cover strips 160  
 PC (UL 94 HB)  
 blue RAL 5017



**C2299018**  
 Case feet  
 TPE (UL 94 HB)



**C2299058**  
 PCB support  
 PC (UL 94 HB)  
 light grey RAL 7035



**C2299068**  
 PCB support  
 PC (UL 94 HB)  
 light grey RAL 7035

Subject to technical modification without notice. © by OKW Gehäusesysteme, Buchen/Germany.