

# DATEC-CONTROL

## Handheld enclosures for large graphics displays

These ergonomic plastic enclosures have a large head section for installing bigger display modules with graphics capability.

- installation of standard size LCDs and graphics display modules
- narrow holding area for user comfort
- high protection class: IP 65 (XS, S) or IP 54 (M, L) when using the sealing kits and display windows (accessories)
- four sizes each in two colours
- **DATEC-CONTROL XS**  
with/without screw-in battery cradles, 2 x AA, 3 x AA / 1 x 9 V cells; battery lid optionally with latch and/or fixed by screws; station for ergonomically inclined desk case applications
- **DATEC-CONTROL S**  
with/without screw-in battery cradles, 4 x AA / 1 x 9 V cells; battery lid optionally with latch and/or fixed by screws; station for ergonomically inclined desk case applications
- **DATEC-CONTROL M, L**  
with/without plug-in battery packs, up to 5 x AA cells; with mounting for PCMCIA holders; separate desk and wall stations for battery charging and/or data downloading
- easy transmission of data and charging current, station and contacts as accessories
- wall suspension element for secure storage of the enclosure (accessory)
- protectors absorb impacts and protect surfaces, sizes M and L additional with shoulder strap
- recessed operating area for protecting the membrane keypad
- internal fastening pillars for PCBs



# DATEC-CONTROL

## Applications and Examples

Mobile data collection and transfer via modem, ISDN or infra-red technology, measuring and control technology, digital control devices, medical and wellness equipment, smart factory, industry 4.0, etc.



BIOFIT test unit for eye frequency



Hand-held measuring device for soil and water



Mobile balance display unit in a football stadium



Mobile HMI Terminal



Modular measuring system for universal use



Pretension tester for V-belts and toothed belts

## Customising Options

What do you still need for your own very personal product? We can supply enclosures and tuning knobs with all necessary modifications for fitting your electronic components.

Customising options for Datec-Control



Machining



Lacquering



Printing



Laser marking



Decor foils



Special material



EMC shielding



Installation / Assembly of accessories

# DATEC-CONTROL

## Select Versions



**A9076107**  
DATEC-CONTROL XS, Vers. I  
ABS (UL 94 HB)  
off-white RAL 9002  
200x94x39.5mm  
IP 65 opt.



**A9076109**  
DATEC-CONTROL XS, Vers. I  
ABS (UL 94 HB)  
black RAL 9005  
200x94x39.5mm  
IP 65 opt.



**A9076157**  
SET: DATEC-CONTROL XS,  
Vers. I, station..  
ABS (UL 94 HB)  
off-white RAL 9002  
200x94mm  
IP 65 opt.



**A9076159**  
SET: DATEC-CONTROL XS,  
Vers. I, station..  
ABS (UL 94 HB)  
black RAL 9005  
200x94mm  
IP 65 opt.



**A9076207**  
DATEC-CONTROL XS, Vers. II  
ABS (UL 94 HB)  
off-white RAL 9002  
200x94x39.5mm  
IP 65 opt.



**A9076209**  
DATEC-CONTROL XS, Vers. II  
ABS (UL 94 HB)  
black RAL 9005  
200x94x40mm  
IP 65 opt.



**A9076257**  
SET: DATEC-CONTROL XS,  
Vers. II, station..  
ABS (UL 94 HB)  
off-white RAL 9002  
200x94mm  
IP 65 opt.



**A9076259**  
SET: DATEC-CONTROL XS,  
Vers. II, station..  
ABS (UL 94 HB)  
black RAL 9005  
200x94mm  
IP 65 opt.



**A9077107**  
DATEC-CONTROL S, Vers. I  
ABS (UL 94 HB)  
off-white RAL 9002  
228x117x47mm  
IP 65 opt.



**A9077109**  
DATEC-CONTROL S, Vers. I  
ABS (UL 94 HB)  
black RAL 9005  
228x117x47mm  
IP 65 opt.



**A9077157**  
SET: DATEC-CONTROL S, Vers.  
I, station..  
ABS (UL 94 HB)  
off-white RAL 9002  
228x117mm  
IP 65 opt.



**A9077159**  
SET: DATEC-CONTROL S, Vers.  
I, station..  
ABS (UL 94 HB)  
black RAL 9005  
228x117mm  
IP 65 opt.



# DATEC-CONTROL



**A9077207**  
DATEC-CONTROL S, Vers. II  
ABS (UL 94 HB)  
off-white RAL 9002  
228x117x47mm  
IP 65 opt.



**A9077209**  
DATEC-CONTROL S, Vers. II  
ABS (UL 94 HB)  
black RAL 9005  
228x117x47mm  
IP 65 opt.



**A9077257**  
SET: DATEC-CONTROL S, Vers. II, station..  
ABS (UL 94 HB)  
off-white RAL 9002  
228x117mm  
IP 65 opt.



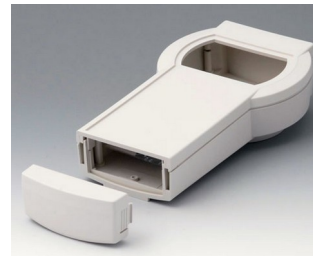
**A9077259**  
SET: DATEC-CONTROL S, Vers. II, station..  
ABS (UL 94 HB)  
black RAL 9005  
228x117mm  
IP 65 opt.



**A9078107**  
DATEC-CONTROL M, Vers. I  
ABS (UL 94 HB)  
off-white RAL 9002  
243x130x60mm  
IP 54 opt.



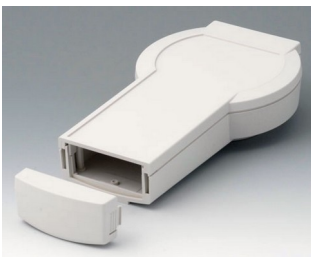
**A9078109**  
DATEC-CONTROL M, Vers. I  
ABS (UL 94 HB)  
black RAL 9005  
243x130x60mm  
IP 54 opt.



**A9078207**  
DATEC-CONTROL M, Vers. II  
ABS (UL 94 HB)  
off-white RAL 9002  
243x130x60mm  
IP 54 opt.



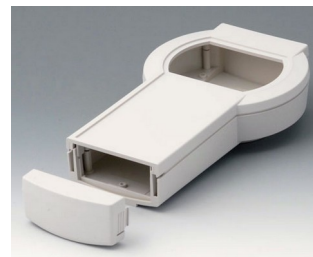
**A9078209**  
DATEC-CONTROL M, Vers. II  
ABS (UL 94 HB)  
black RAL 9005  
243x130x60mm  
IP 54 opt.



**A9079107**  
DATEC-CONTROL L, Vers. I  
ABS (UL 94 HB)  
off-white RAL 9002  
266x144x60mm  
IP 54 opt.



**A9079109**  
DATEC-CONTROL L, Vers. I  
ABS (UL 94 HB)  
black RAL 9005  
266x144x60mm  
IP 54 opt.

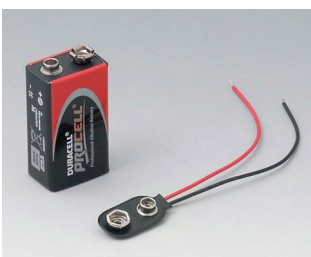


**A9079207**  
DATEC-CONTROL L, Vers. II  
ABS (UL 94 HB)  
off-white RAL 9002  
266x144x60mm  
IP 54 opt.



**A9079209**  
DATEC-CONTROL L, Vers. II  
ABS (UL 94 HB)  
black RAL 9005  
266x144x60mm  
IP 54 opt.

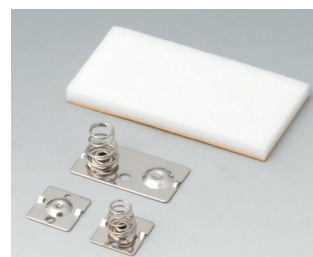
## Accessory "battery"



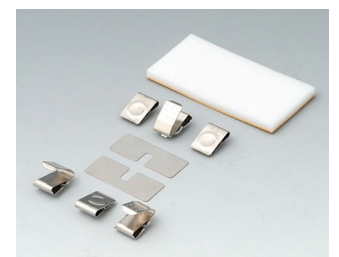
**A9160003**  
Plug-in contact, 1 x 9 V (PP3)



**A9174006**  
Set of battery clips, 1 x 9 V  
Steel  
tin-plated

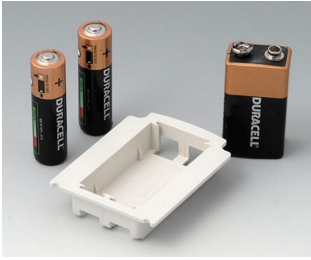


**A9176007**  
Set of battery clips, 2 x AA  
Steel  
nickel-plated



**A9176008**  
Set of battery clips, 3 x AA  
Steel  
nickel-plated

# DATEC-CONTROL



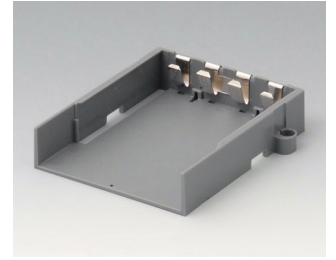
**A9176128**  
Battery compartment XS, 2 x AA  
or 1 x 9V  
ABS (UL 94 HB)



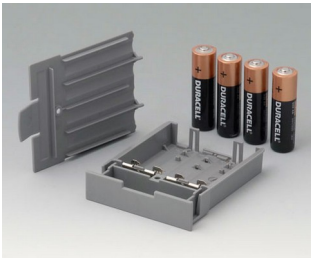
**A9176158**  
Battery compartment XS, 3 x AA  
ABS (UL 94 HB)  
off-white RAL 9002



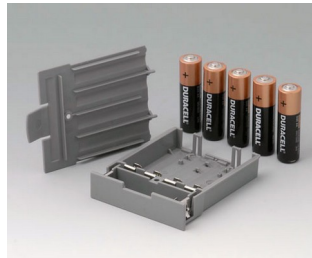
**A9177310**  
Battery compartment, 1 x 9 V  
ABS (UL 94 HB)



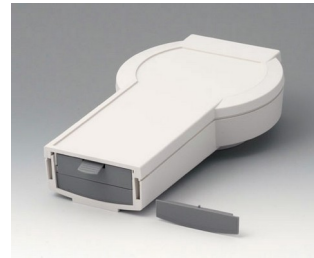
**A9178118**  
Battery compartment holder  
PC  
volcano



**A9178128**  
Battery compartment, M/L, 4 x  
AA  
PC  
volcano



**A9178158**  
Battery compartment, M/L, 5 x  
AA  
PC  
volcano



**A9178178**  
End plate for electronic area,  
Vers. I  
PC  
volcano



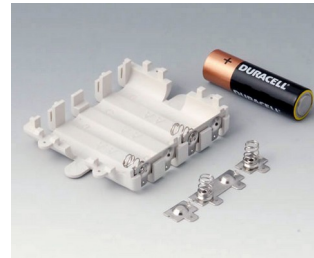
**A9178188**  
End plate for electronic area,  
Vers. II  
PC  
volcano



**A9178198**  
End plate for electronic area,  
Vers. III  
PC  
volcano



**A9250250**  
Battery spacer  
PE foam  
50x25x4mm



**A9345217**  
Set of battery compartment, 4 x  
AA  
ABS (UL 94 HB)  
off-white RAL 9002

## Accessory "station"



**A9176137**  
Station XS  
ABS (UL 94 HB)  
off-white RAL 9002



**A9176139**  
Station XS  
ABS (UL 94 HB)  
black RAL 9005

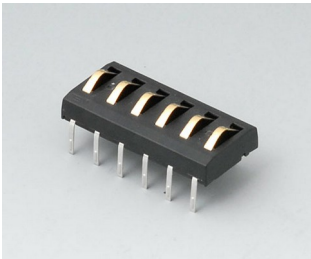


**A9177137**  
Station S  
ABS (UL 94 HB)  
off-white RAL 9002

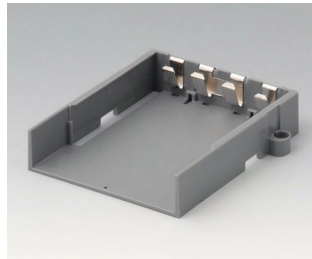


**A9177139**  
Station S  
ABS (UL 94 HB)  
black RAL 9005

# DATEC-CONTROL



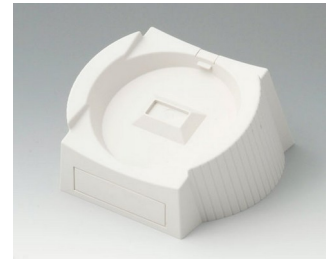
**A9178007**  
 Contacts, male  
 gold-plated



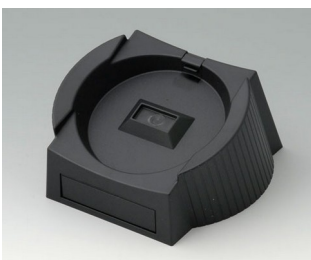
**A9178118**  
 Battery compartment holder  
 PC  
 volcano



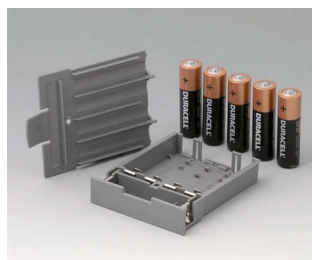
**A9178128**  
 Battery compartment, M/L, 4 x  
 AA  
 PC  
 volcano



**A9178137**  
 Station, Vers. I  
 ABS (UL 94 HB)  
 off-white RAL 9002



**A9178139**  
 Station, Vers. I  
 ABS (UL 94 HB)  
 black RAL 9005



**A9178158**  
 Battery compartment, M/L, 5 x  
 AA  
 PC  
 volcano



**A9178167**  
 Station, Vers. II  
 ABS (UL 94 HB)  
 off-white RAL 9002

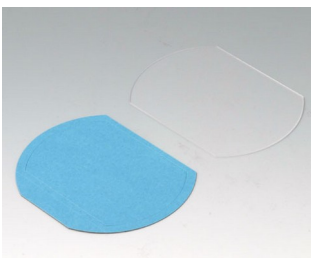


**A9178169**  
 Station, Vers. II  
 ABS (UL 94 HB)  
 black RAL 9005

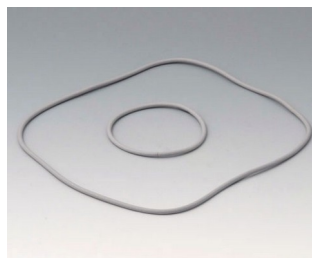


**A9199005**  
 Strain relief  
 PA 6  
 volcano

## Accessory "protection"



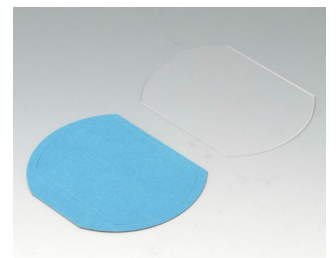
**A9176001**  
 Display window XS  
 Acrylic glass  
 clear



**A9176006**  
 Sealing kit XS



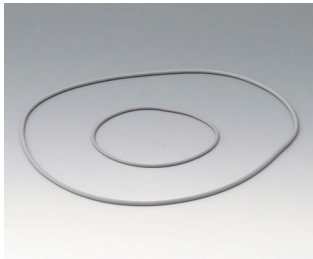
**A9176108**  
 Protector XS  
 SBS (TPE)  
 volcano



**A9177001**  
 Display window S  
 Acrylic glass  
 clear



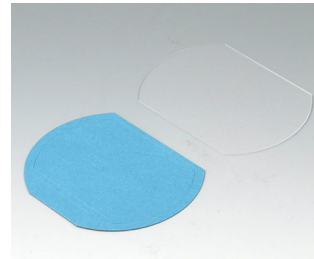
# DATEC-CONTROL



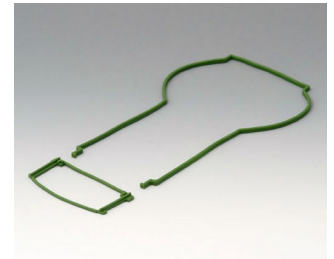
A9177006  
 Sealing kit S



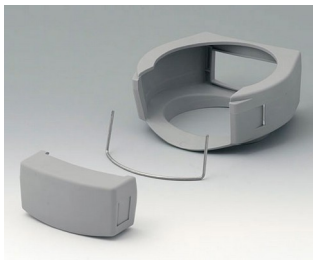
A9177008  
 Protector S  
 SBS (TPE)  
 volcano



A9178001  
 Display window M  
 Acrylic glass  
 clear



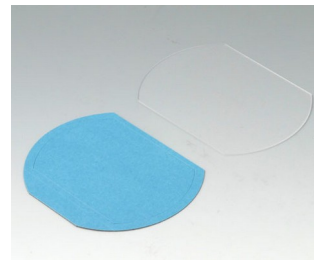
A9178006  
 Sealing kit M



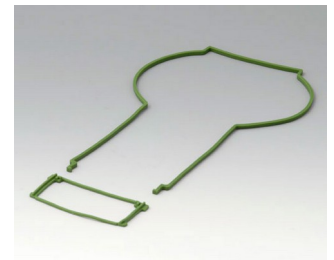
A9178108  
 Protector M  
 SBS (TPE)  
 volcano



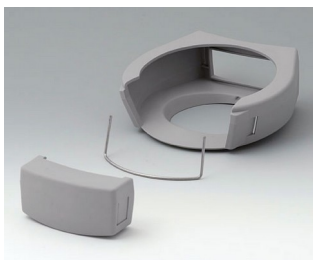
A9178208  
 Protector M  
 SBS (TPE)  
 volcano



A9179001  
 Display window L  
 Acrylic glass  
 clear



A9179006  
 Sealing kit L



A9179108  
 Protector L  
 SBS (TPE)  
 volcano



A9179208  
 Protector L  
 SEBS (TPE)  
 volcano

## Accessory "wall/holder"



A9226117  
 Wall suspension element  
 ABS (UL 94 HB)  
 off-white RAL 9002



A9226119  
 Wall suspension element  
 ABS (UL 94 HB)  
 black RAL 9005



A9226227  
 Wall suspension element  
 ABS (UL 94 HB)  
 off-white RAL 9002



A9226229  
 Wall suspension element  
 ABS (UL 94 HB)  
 black RAL 9005

# DATEC-CONTROL



**A9226337**  
Wall suspension element  
ABS (UL 94 HB)  
off-white RAL 9002



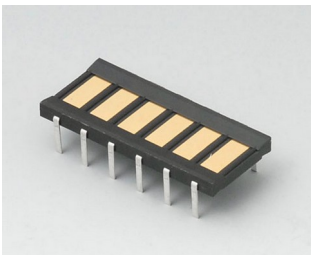
**A9226339**  
Wall suspension element  
ABS (UL 94 HB)  
black RAL 9005

## Accessory "carrying"



**A910002**  
Ring eyelet  
PA 6  
volcano

## Accessory



**A9178008**  
Contacts, female  
gold-plated

Subject to technical modification without notice. © by OKW Gehäusesysteme, Buchen/Germany.