

COMMUNITEC

Modern, large-format table top enclosures for comfortable interaction and visualisation

The COMMUNITEC enclosure range is ideal for housing large-format electronic assemblies in an elegant, modern, design-oriented package. A key feature is the recessed handle concealed behind the operating panel, which allows the units to be carried comfortably and provides greater flexibility in use.

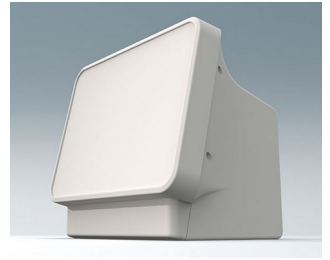
- Modern and functional design
- Integrated handle and carrying function for efficient handling
- Two sizes available; different colour combinations possible
- Operating panel with a recessed area to protect membrane keypads or large-format 11.5" - 14" (29 - 35 cm) displays, as well as a flat surface for front mounted operating elements and connectors
- Large side areas for connectors, ventilation slots for increased heat dissipation, or for fitting measuring instruments
- Rear of enclosure features a recessed area to protect built in sockets, plugs and supply cables; includes an additional recess for a product label
- Four part design: basic housing, operating panel, handle recess panel and bottom panel – available as separate components for individual colour combinations
- High degree of configuration flexibility: fastening pillars for PCBs and components in the basic housing, in the operating panel, and on the bottom panel
- Easy assembly/installation: efficient assembly of the bottom panel outside the housing. The bottom panel, together with the electronic unit, can then be mounted into the COMMUNITEC basic housing. Particularly easy installation and servicing thanks to good access to pre assembled components – from above through the opening for the handle recess panel and/or from the front.
- Includes self adhesive, non slip feet for reliable positioning
- Protection class IP40

Designer statement

"COMMUNITEC is a desktop enclosure designed to balance the demands of digital and analogue technology. At its centre sits a generously sized, ergonomically inclined display and control panel that provides ample space for your user interface. Behind this, set back from the front, is a deep installation area for both electronic and mechanical components. The elegant, seemingly floating front frame is organically integrated into the main body, making its proportions appear smaller. The base beneath the front of the housing offers a mounting surface for connections to elements that complement your system on the desk. A concealed access point on the rear of the front section also allows your product to be transported securely to its place of use."

Martin Nußberger, polyform Industrie Design

COMMUNITEC



Applications and Examples

Medical equipment, e.g. for patient monitoring, diagnosis and surveillance, for example for ventilators, neuromonitoring and much more. Aesthetic medicine, e.g. laser treatment, foot care and for IPL (Intense Pulsed Light) applications. Versatile measuring and testing devices in laboratories, testing technology, automation, etc. For fault analysis and quality control. Oscilloscopes with a wide range of functions.



Foot care device



Impedance Analysis



Material analysis in R&D and for damage analysis



Patient monitoring system



Testing device for battery systems

COMMUNITEC

Customising Options

What do you still need for your own very personal product? We can supply enclosures and tuning knobs with all necessary modifications for fitting your electronic components.
Customising options for Communitec



Machining



Lacquering



Printing



Laser marking



Decor foils



EMC shielding



Installation / Assembly
of accessories

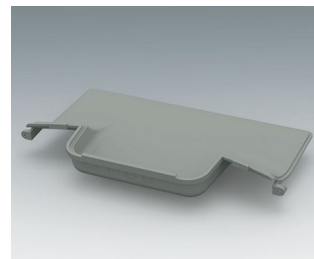
Select Versions



C3602407
Operating panel S
ASA+PC (UL 94 V-0)
traffic white RAL 9016
284x68x244mm



C3602408
Operating panel S
ASA+PC (UL 94 V-0)
anthracite grey RAL 7016
284x68x244mm



C3602601
Handle recess panel
ASA+PC (UL 94 V-0)
traffic grey A RAL 7042



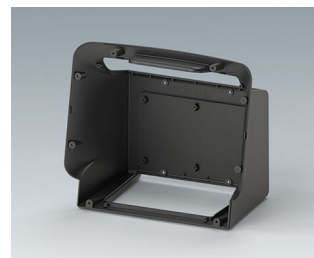
C3602607
Handle recess panel
ASA+PC (UL 94 V-0)
traffic white RAL 9016



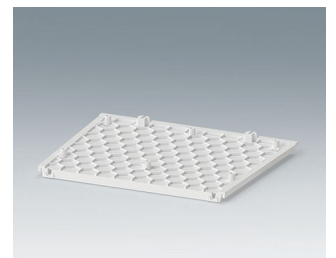
C3602608
Handle recess panel
ASA+PC (UL 94 V-0)
anthracite grey RAL 7016



C3602707
COMMUNITEC S, basic housing
ASA+PC (UL 94 V-0)
traffic white RAL 9016
280x169x242mm
IP 40



C3602708
COMMUNITEC S, basic housing
ASA+PC (UL 94 V-0)
anthracite grey RAL 7016
280x169x242mm
IP 40



C3602807
Bottom panel
ASA+PC (UL 94 V-0)
traffic white RAL 9016
188x150x5mm

COMMUNITEC



C3602808
Bottom panel
ASA+PC (UL 94 V-0)
anthracite grey RAL 7016
188x150x5mm



C3604407
Operating panel M
ASA+PC (UL 94 V-0)
traffic white RAL 9016
328x78x275mm



C3604408
Operating panel M
ASA+PC (UL 94 V-0)
anthracite grey RAL 7016
328x78x275mm



C3604707
COMMUNITEC M, basic housing
ASA+PC (UL 94 V-0)
traffic white RAL 9016
340x194x273mm
IP 40



C3604708
COMMUNITEC M, basic housing
ASA+PC (UL 94 V-0)
anthracite grey RAL 7016
340x194x273mm
IP 40

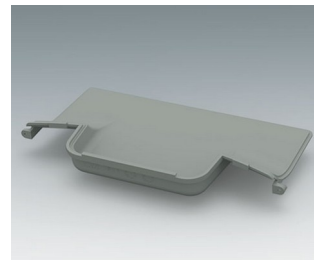
System components to complete



C3602407
Operating panel S
ASA+PC (UL 94 V-0)
traffic white RAL 9016
284x68x244mm



C3602408
Operating panel S
ASA+PC (UL 94 V-0)
anthracite grey RAL 7016
284x68x244mm



C3602601
Handle recess panel
ASA+PC (UL 94 V-0)
traffic grey A RAL 7042



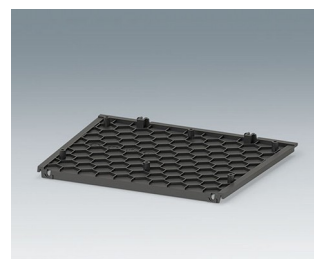
C3602607
Handle recess panel
ASA+PC (UL 94 V-0)
traffic white RAL 9016



C3602608
Handle recess panel
ASA+PC (UL 94 V-0)
anthracite grey RAL 7016



C3602807
Bottom panel
ASA+PC (UL 94 V-0)
traffic white RAL 9016
188x150x5mm



C3602808
Bottom panel
ASA+PC (UL 94 V-0)
anthracite grey RAL 7016
188x150x5mm



C3604407
Operating panel M
ASA+PC (UL 94 V-0)
traffic white RAL 9016
328x78x275mm

COMMUNITEC



C3604408
Operating panel M
ASA+PC (UL 94 V-0)
anthracite grey RAL 7016
328x78x275mm

Accessory "screws"



A0325060
Self-tapping screw 2.5 x 6 mm
(T8)
Stainless steel

Subject to technical modification without notice. © by OKW Gehäusesysteme, Buchen/Germany.