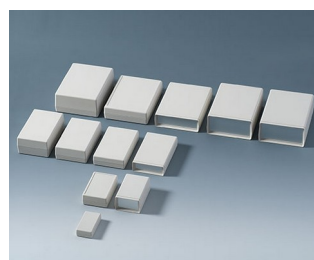


# SHELL CASE

## Univerzální přístrojové pouzdro

SHELL CASE je k dispozici v různých velikostech, výškách a typech. Vyberte si pouzdro, který vyhovuje Vaším specifickým potřebám!

- 51 pouzder ve třech různých typech:
  - Typ V** - čelní strana otevřená, zadní uzavřená
  - Typ O** - čelní strana otevřená, zadní otevřená
  - Typ G** - čelní strana zavřená, zadní zavřená
- Vysoká stabilita díky obvodovému připojení pera a drážky
- Vodicí lišty pro vertikální instalaci oddílů a desek plošných spojů
- Upevňovací sloupky v horní a spodní části
- Přední a zadní panely vyrobené z hliníku nebo PMMA červené (acrylic glass) jako příslušenství
- Verze s bateriovým prostorem pro 4 x AA, 2 x AA, 1 x 9 V nebo 2 x 9 V (typy V a G)
- Uzavřená verze (typ G) také se zapuštěnou plochou pro ochranu membránové klávesnice
- Stupeň ochrany do IP 65 v uzavřeném provedení (typ G) bez schránky na baterie a při použití sady těsnění (příslušenství)
- EMC: na požádání můžete také obdržet SHELL CASE s hliníkovým povlakem; kontakt lze zlepšit prostřednictvím nabízených kontaktních pásů (příslušenství)
- Konzoly pro montáž na stěnu / nástěnný držák nastavte jako příslušenství
- Další funkce s univerzálním příslušenstvím



# SHELL CASE

## Applikace a příklady

Měření a řízení, lékařská a laboratorní technika, periferní zařízení, spínače a modemy, atd.



Magnetic metal detector



System for leak detection in leisure vehicles



Teleservice Gateway MGW/865

## Přizpůsobení možností

Co ještě potřebujete pro svůj vlastní velmi osobní produkt? Můžeme dodat zapouzdření a ladicí knoflíky se všemi nezbytnými úpravami pro montáž vašich elektronických součástek.

Možnosti přizpůsobení pro Shell Case



Mechanické  
opracování



Lakování



Tisk



Laserové značení



Dekorační fólie



Zakázkový materiál



Stínění EMC



Kompletace / Montáž

## Vyberte verze



**A9404331**  
SHELL-TYPE CASES G 85,  
Vers. I  
ABS (UL 94 HB)  
off-white RAL 9002  
45x85x22mm  
IP 65 opt.



**A9404333**  
SHELL-TYPE CASES V 85,  
Vers. I  
ABS (UL 94 HB)  
off-white RAL 9002  
45x85x22mm



**A9404341**  
SHELL-TYPE CASES G 85,  
Vers. I  
ABS (UL 94 HB)  
off-white RAL 9002  
45x85x33mm  
IP 65 opt.

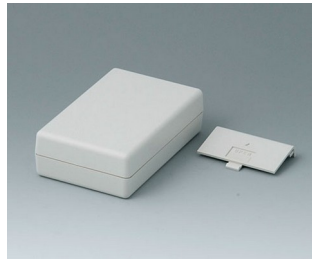


**A9404441**  
SHELL-TYPE CASES G 85,  
Vers. I  
ABS (UL 94 HB)  
off-white RAL 9002  
45x85x45mm  
IP 65 opt.

# SHELL CASE



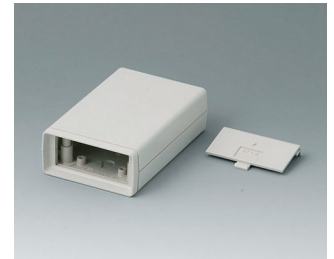
**A9406331**  
SHELL-TYPE CASES G 110,  
Vers. I  
ABS (UL 94 HB)  
off-white RAL 9002  
72x114x33mm  
IP 65 opt.



**A9406332**  
SHELL-TYPE CASES G 110,  
Vers. II  
ABS (UL 94 HB)  
off-white RAL 9002  
72x114x33mm



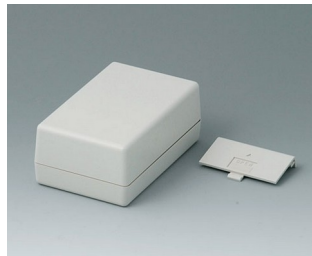
**A9406333**  
SHELL-TYPE CASES V 110,  
Vers. I  
ABS (UL 94 HB)  
off-white RAL 9002  
72x114x33mm



**A9406334**  
SHELL-TYPE CASES V 110,  
Vers. II  
ABS (UL 94 HB)  
off-white RAL 9002  
72x114x33mm



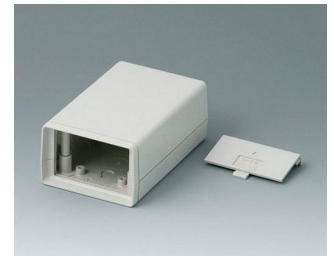
**A9406341**  
SHELL-TYPE CASES G 110,  
Vers. I  
ABS (UL 94 HB)  
off-white RAL 9002  
72x114x45mm  
IP 65 opt.



**A9406342**  
SHELL-TYPE CASES G 110,  
Vers. II  
ABS (UL 94 HB)  
off-white RAL 9002  
72x114x45mm



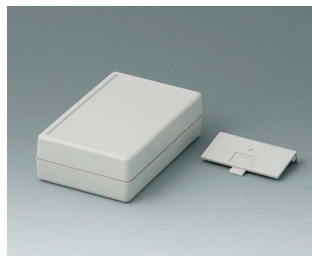
**A9406343**  
SHELL-TYPE CASES V 110,  
Vers. I  
ABS (UL 94 HB)  
off-white RAL 9002  
72x114x45mm



**A9406344**  
SHELL-TYPE CASES V 110,  
Vers. II  
ABS (UL 94 HB)  
off-white RAL 9002  
72x114x45mm



**A9406351**  
SHELL-TYPE CASES G 110,  
Vers. I  
ABS (UL 94 HB)  
off-white RAL 9002  
72x114x33,5mm  
IP 65 opt.



**A9406352**  
SHELL-TYPE CASES G 110,  
Vers. II  
ABS (UL 94 HB)  
off-white RAL 9002  
72x114x33,5mm



**A9406441**  
SHELL-TYPE CASES G 110,  
Vers. I  
ABS (UL 94 HB)  
off-white RAL 9002  
72x114x57mm  
IP 65 opt.



**A9406443**  
SHELL-TYPE CASES V 110,  
Vers. I  
ABS (UL 94 HB)  
off-white RAL 9002  
72x114x57mm



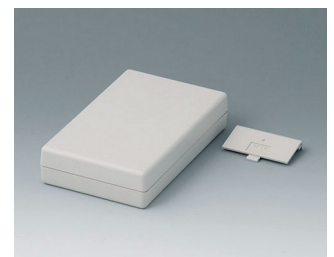
**A9408330**  
SHELL-TYPE CASES O 155,  
Vers. I  
ABS (UL 94 HB)  
off-white RAL 9002  
95x158x33mm



**A9408331**  
SHELL-TYPE CASES G 155,  
Vers. I  
ABS (UL 94 HB)  
off-white RAL 9002  
95x158x33mm  
IP 65 opt.



**A9408333**  
SHELL-TYPE CASES V 155,  
Vers. I  
ABS (UL 94 HB)  
off-white RAL 9002  
95x158x33mm



**A9408335**  
SHELL-TYPE CASES G 155,  
Vers. IV  
ABS (UL 94 HB)  
off-white RAL 9002  
95x158x33mm

# SHELL CASE



**A9408336**  
 SHELL-TYPE CASES V 155,  
 Vers. IV  
 ABS (UL 94 HB)  
 off-white RAL 9002  
 95x158x33mm



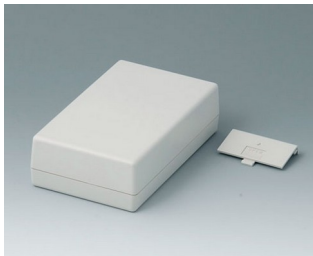
**A9408340**  
 SHELL-TYPE CASES O 155,  
 Vers. I  
 ABS (UL 94 HB)  
 off-white RAL 9002  
 95x158x45mm



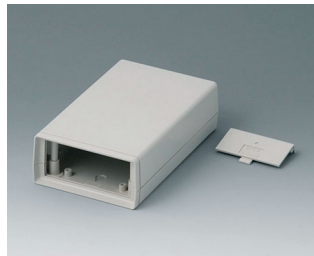
**A9408341**  
 SHELL-TYPE CASES G 155,  
 Vers. I  
 ABS (UL 94 HB)  
 off-white RAL 9002  
 95x158x45mm  
 IP 65 opt.



**A9408343**  
 SHELL-TYPE CASES V 155,  
 Vers. I  
 ABS (UL 94 HB)  
 off-white RAL 9002  
 95x158x45mm



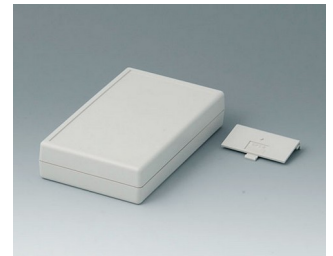
**A9408345**  
 SHELL-TYPE CASES G 155,  
 Vers. IV  
 ABS (UL 94 HB)  
 off-white RAL 9002  
 95x158x45mm



**A9408346**  
 SHELL-TYPE CASES V 155,  
 Vers. IV  
 ABS (UL 94 HB)  
 off-white RAL 9002  
 95x158x45mm



**A9408351**  
 SHELL-TYPE CASES G 155,  
 Vers. I  
 ABS (UL 94 HB)  
 off-white RAL 9002  
 95x158x33,5mm  
 IP 65 opt.



**A9408355**  
 SHELL-TYPE CASES G 155,  
 Vers. IV  
 ABS (UL 94 HB)  
 off-white RAL 9002  
 95x158x33,5mm



**A9408440**  
 SHELL-TYPE CASES O 155,  
 Vers. I  
 ABS (UL 94 HB)  
 off-white RAL 9002  
 95x155x57mm



**A9408441**  
 SHELL-TYPE CASES G 155,  
 Vers. I  
 ABS (UL 94 HB)  
 off-white RAL 9002  
 95x158x57mm  
 IP 65 opt.



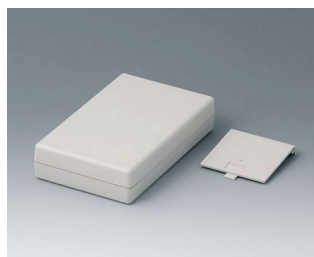
**A9408443**  
 SHELL-TYPE CASES V 155,  
 Vers. I  
 ABS (UL 94 HB)  
 off-white RAL 9002  
 95x158x57mm



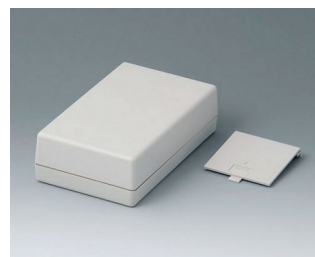
**A9408638**  
 SHELL-TYPE CASES V 155,  
 Vers. V  
 ABS (UL 94 HB)  
 off-white RAL 9002  
 95x158x33mm



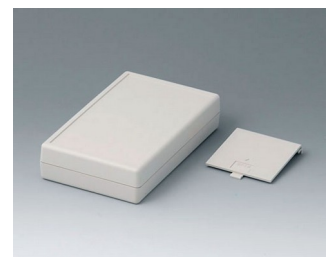
**A9408648**  
 SHELL-TYPE CASES V 155,  
 Vers. V  
 ABS (UL 94 HB)  
 off-white RAL 9002  
 95x158x45mm



**A9408737**  
 SHELL-TYPE CASES G 155,  
 Vers. V  
 ABS (UL 94 HB)  
 off-white RAL 9002  
 95x158x33mm



**A9408747**  
 SHELL-TYPE CASES G 155,  
 Vers. V  
 ABS (UL 94 HB)  
 off-white RAL 9002  
 95x158x45mm



**A9408757**  
 SHELL-TYPE CASES G 155,  
 Vers. V  
 ABS (UL 94 HB)  
 off-white RAL 9002  
 95x158x33,5mm

# SHELL CASE



**A9413330**  
SHELL-TYPE CASES O 190,  
Vers. I  
ABS (UL 94 HB)  
off-white RAL 9002  
138x190x45mm



**A9413331**  
SHELL-TYPE CASES G 190,  
Vers. I  
ABS (UL 94 HB)  
off-white RAL 9002  
138x190x45mm  
IP 65 opt.



**A9413333**  
SHELL-TYPE CASES V 190,  
Vers. I  
ABS (UL 94 HB)  
off-white RAL 9002  
138x190x45mm



**A9413340**  
SHELL-TYPE CASES O 190,  
Vers. I  
ABS (UL 94 HB)  
off-white RAL 9002  
138x190x68mm



**A9413341**  
SHELL-TYPE CASES G 190,  
Vers. I  
ABS (UL 94 HB)  
off-white RAL 9002  
138x190x68mm  
IP 65 opt.



**A9413343**  
SHELL-TYPE CASES V 190,  
Vers. I  
ABS (UL 94 HB)  
off-white RAL 9002  
138x190x68mm



**A9413351**  
SHELL-TYPE CASES G 190,  
Vers. I  
ABS (UL 94 HB)  
off-white RAL 9002  
138x190x45,5mm  
IP 65 opt.



**A9413440**  
SHELL-TYPE CASES O 190,  
Vers. I  
ABS (UL 94 HB)  
off-white RAL 9002  
138x190x91mm



**A9413441**  
SHELL-TYPE CASES G 190,  
Vers. I  
ABS (UL 94 HB)  
off-white RAL 9002  
138x190x91mm  
IP 65 opt.



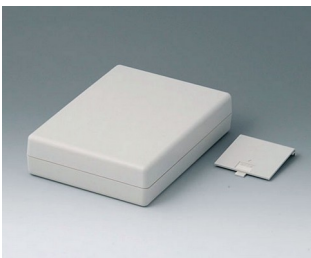
**A9413443**  
SHELL-TYPE CASES V 190,  
Vers. I  
ABS (UL 94 HB)  
off-white RAL 9002  
138x190x91mm



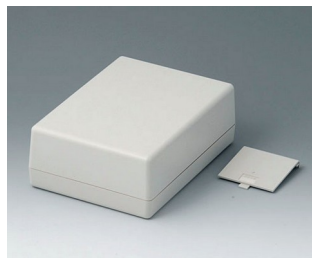
**A9413638**  
SHELL-TYPE CASES V 190,  
Vers. V  
ABS (UL 94 HB)  
off-white RAL 9002  
138x190x45mm



**A9413648**  
SHELL-TYPE CASES V 190,  
Vers. V  
ABS (UL 94 HB)  
off-white RAL 9002  
138x190x68mm



**A9413737**  
SHELL-TYPE CASES G 190,  
Vers. V  
ABS (UL 94 HB)  
off-white RAL 9002  
138x190x45mm



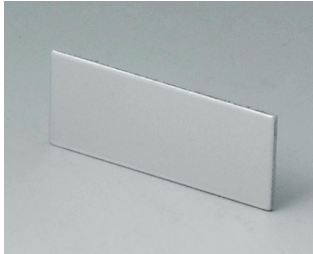
**A9413747**  
SHELL-TYPE CASES G 190,  
Vers. V  
ABS (UL 94 HB)  
off-white RAL 9002  
138x190x68mm



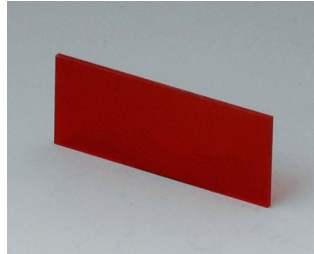
**A9413757**  
SHELL-TYPE CASES G 190,  
Vers. V  
ABS (UL 94 HB)  
off-white RAL 9002  
138x190x45,5mm

# SHELL CASE

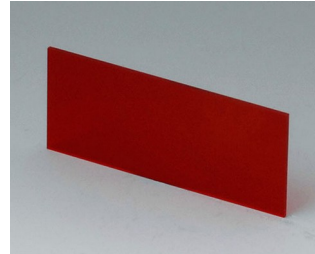
## Accessory to complete



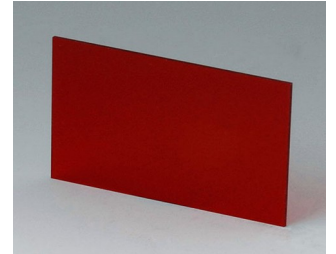
**A9104111**  
Front / rear panel V 85  
Aluminium  
matt anodised  
36x14,6x1mm



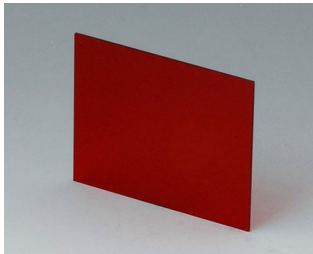
**A9104113**  
Front / rear panel V 85  
Acrylglas  
red transparent  
36x14,6x1mm



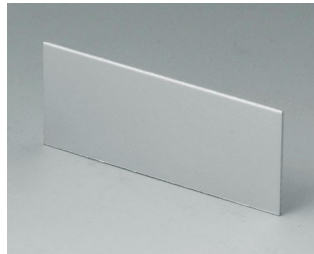
**A9106113**  
Front / rear panel V 110  
Acrylglas  
red transparent  
59,3x25x1mm



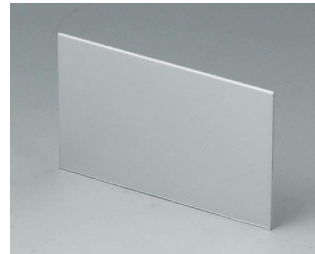
**A9106123**  
Front / rear panel V 110  
Acrylglas  
red transparent  
59,3x37x1mm



**A9106223**  
Front / rear panel V 110  
Acrylglas  
red transparent  
59,3x49x1mm



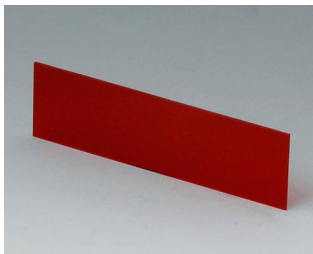
**A9107111**  
Front / rear panel V 110  
Aluminium  
matt anodised  
59,3x25x1mm



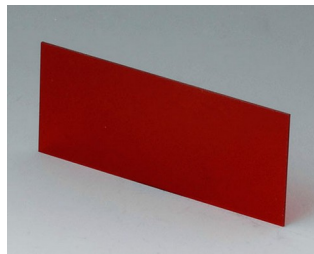
**A9107121**  
Front / rear panel V 110  
Aluminium  
matt anodised  
59,3x37x1mm



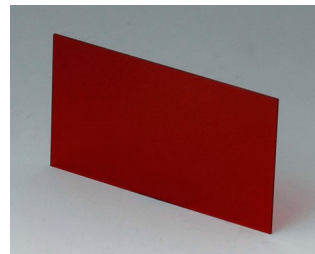
**A9107221**  
Front / rear panel V 110  
Aluminium  
matt anodised  
59,3x49x1mm



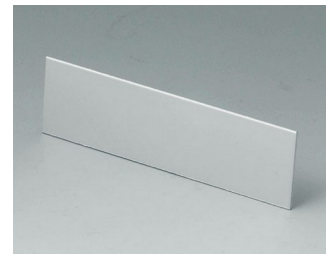
**A9108113**  
Front / rear panel V, O 155  
Acrylglas  
red transparent  
81,9x23,6x1mm



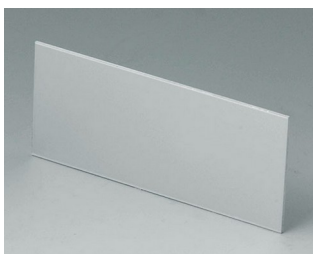
**A9108123**  
Front / rear panel V, O 155  
Acrylglas  
red transparent  
81,9x35,6x1mm



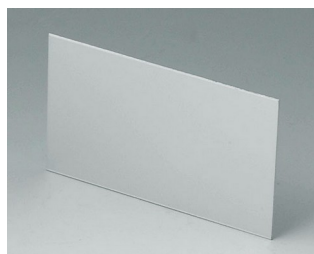
**A9108223**  
Front / rear panel V, O 155  
Acrylglas  
red transparent  
81,9x47,6x1mm



**A9109111**  
Front / rear panel V, O 155  
Aluminium  
matt anodised  
81,9x23,6x1mm



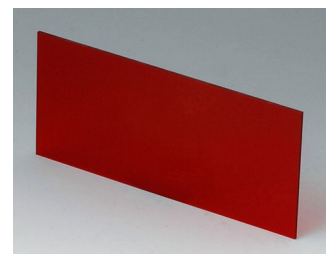
**A9109121**  
Front / rear panel V, O 155  
Aluminium  
matt anodised  
81,9x35,6x1mm



**A9109221**  
Front / rear panel V, O 155  
Aluminium  
matt anodised  
81,9x47,6x1mm

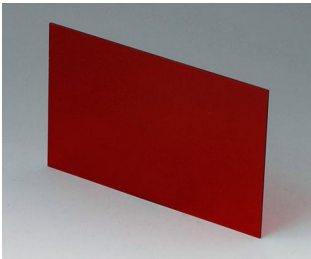


**A9113113**  
Front / rear panel V, O 190  
Acrylglas  
red transparent  
124,2x33,6x1,5mm

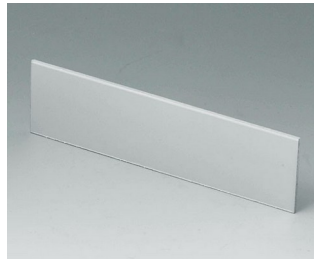


**A9113123**  
Front / rear panel V, O 190  
Acrylglas  
red transparent  
124,2x56,6x1,5mm

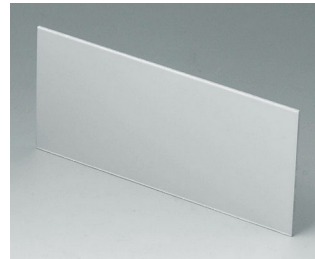
# SHELL CASE



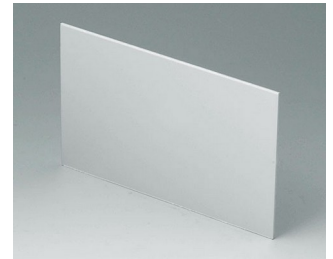
**A9113223**  
Front / rear panel V, O 190  
Acrylglas  
red transparent  
124,2x79,6x1,5mm



**A9114111**  
Front / rear panel V, O 190  
Aluminium  
matt anodised  
124,2x33,6x1,5mm

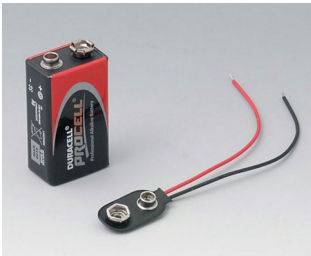


**A9114121**  
Front / rear panel V, O 190  
Aluminium  
matt anodised  
124,2x56,6x1,5mm



**A9114221**  
Front / rear panel V, O 190  
Aluminium  
matt anodised  
124,2x79,6x1,5mm

## Accessory "battery"



**A9160003**  
Plug-in contact, 1 x 9 V (PP3)



**A9190013**  
Set of battery clips, 4 x AA  
Steel  
nickel-plated



**A9190014**  
Set of battery clips, 2 x AA  
Steel  
nickel-plated

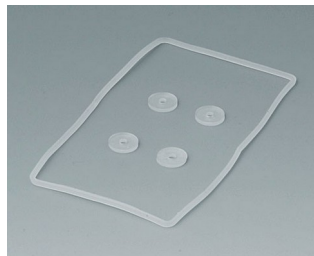


**A9250250**  
Battery spacer  
PE foam  
50x25x4mm

## Accessory "protection"



**A9104073**  
Contact-strips V, G 85  
Aluminium



**A9104250**  
Sealing kit G 85



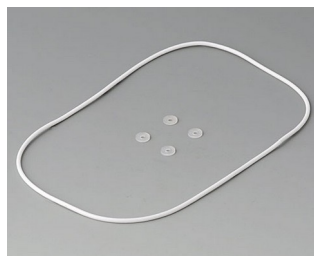
**A9106095**  
Contact-strips V, G 110  
Aluminium



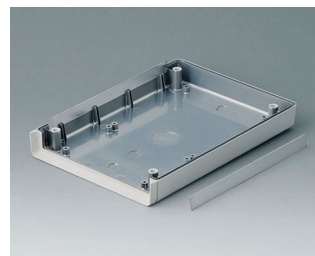
**A9106352**  
Sealing kit G 110



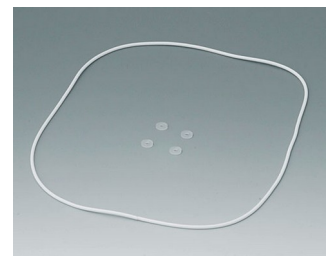
**A9108120**  
Contact-strips V, O, G 155  
Aluminium



**A9108486**  
Sealing kit G 155



**A9113150**  
Contact-strips V, O, G 190  
Aluminium



**A9113630**  
Sealing kit G 190

# SHELL CASE

## Accessory "wall/holder"



**A9204108**  
Wall mounting brackets  
PA 6  
pebble grey RAL 7032



**B1350048**  
Wall suspension elements  
ABS (UL 94 HB)  
pebble grey RAL 7032



**B1360048**  
Wall suspension elements  
ABS (UL 94 HB)  
pebble grey RAL 7032

## Accessory "carrying"



**A9100001**  
Ring eyelet  
PA 6  
volcano



**A9100002**  
Ring eyelet  
PA 6  
volcano



**A9172107**  
Belt/Pocket clip  
ABS (UL 94 HB)  
off-white RAL 9002  
62x30mm

## Accessory "screws"



**A0306031**  
Self-tapping screws 3 x 6 mm  
(PZ1)

## Accessory



**A9207150**  
Anti-slide feet 6.5 x 2 mm  
transparent



**A9210290**  
Anti-slide feet 9.5 x 3.8 mm  
transparent



**A9250807**  
Tilt foot bar  
ABS (UL 94 HB)  
off-white RAL 9002



**A9250817**  
Tilt foot bar  
ABS (UL 94 HB)  
off-white RAL 9002

# SHELL CASE

Subject to technical modification without notice. © by OKW Gehäusesysteme, Buchen/Germany.