



THE PRODUCT

The LUX CASE range offers an unusual case design. The three-part assembly makes the components particularly easily accessible.

The selection of the centre section, e.g. in your company's color, allows you to create individual electronics cases to match the corporate design of your company.

YOUR ADVANTAGE

Vertical and horizontal PCB mounting – a special advantage of the OKW-LUX-CASE range is achieved by the especially designed card guide. The card guide is fitted into the centre section and can be moved horizontally.

The assembled PCBs can be simply inserted from the front without removing the top part. For this, the PCB is assembled with the front panel.

Guide groove for pushing in the aluminum front panel. If required it can also be screwed together from the front (150, 230).

It is simple to use and the display instruments are easy to read off, thanks to the fold-out tilt feet or sturdy bar (size 230 only). May also be used as a carrying handle.

Without/with battery compartment (150/190).

APPLICATIONS

Measuring devices for medical and laboratory technologies.

Control devices.

Peripheral computer equipment.

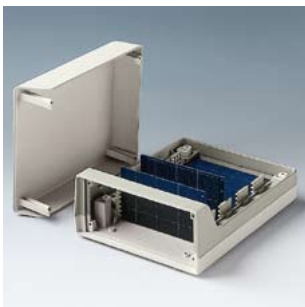
PROTECTION CLASS < IP 40

MAX. SIZE OF PCB

LUX CASE	W x D in inches	
	base part	top part
150	2.756 x 5.039 (without batt. comp.)	
190	3.937 x 6.496 (without batt. comp.)	
230 with vent. slots	5.079 x 7.087	5.039 x 5.906
230 without vent.	5.079 x 8.071	5.039 x 6.890

(PCB mounting on fastening pillars)

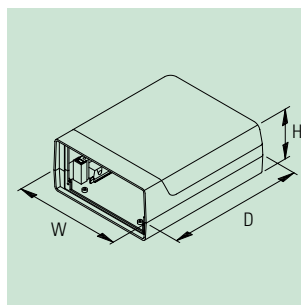
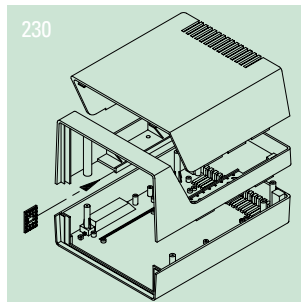
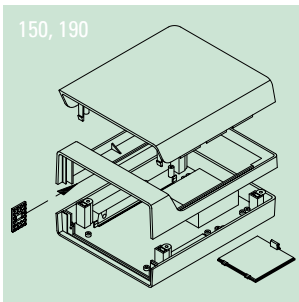
LUX CASES



Two colored

Base and top
Off-white, RAL 9002

Center section
Pebble gray, RAL 7032

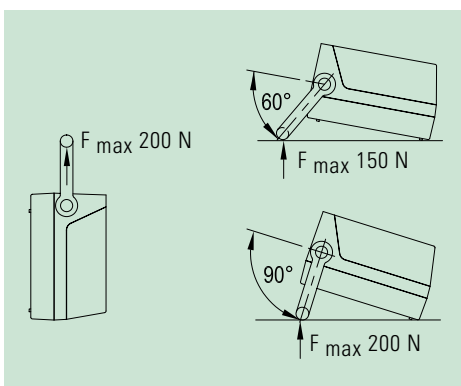


INFO-BOX

LUX CASE 230 with handle

The handle enables carrying and convenient canting of the unit.

- High load capacity.
- With 30° indexing.
- Color combination:
Side arms in pebble gray, RAL 7032 and push-button in off-white, RAL 9002.
Aluminum center section.

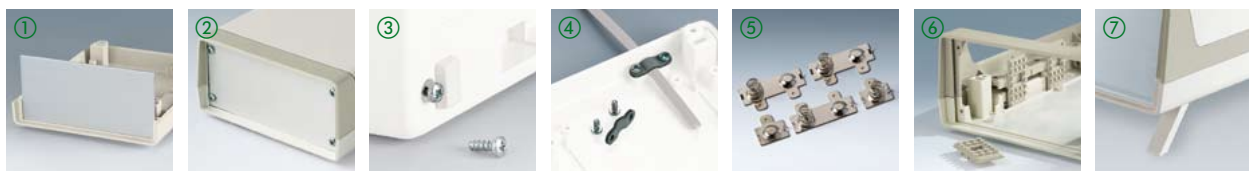


ENCLOSURES

LUX CASE	Outside dim. in inches			Version / Equipment			Material	Part-No.	
	W	D	H	battery comp.	pillars for strain relief	ventilation slots			
150	4.646	5.906	2.244	I	–	•	–	ABS (UL 94 HB)	A 99 12 637
	4.646	5.906	2.244	II	4 x AA	–	–	ABS (UL 94 HB)	A 99 12 687
190	5.827	7.480	2.638	I	–	•	–	ABS (UL 94 HB)	A 99 15 737
	5.827	7.480	2.638	II	4 x AA	–	–	ABS (UL 94 HB)	A 99 15 787
230 without handle	6.811	9.055	5.354	I	–	•	–	ABS (UL 94 HB)	A 99 17 837
	6.811	9.055	5.354	II	–	•	•	ABS (UL 94 HB)	A 99 17 847
230 with handle	6.811	9.055	5.354	III	–	•	–	ABS (UL 94 HB)	A 99 17 857
	6.811	9.055	5.354	IV	–	•	•	ABS (UL 94 HB)	A 99 17 877

ACCESSORIES

Article	For enclosure LUX CASE	Version / Application	Part-No.
① Front panel	150	for slide-in, matt anodized aluminum, 4.252" x 2.079" x 0.059", 1 pc	A 91 99 121
	150	for screw fixing, matt anodized aluminum, 4.185" x 1.984" x 0.079", 1 pc	A 91 99 122
	190	for slide-in, matt anodized aluminum, 5.276" x 2.461" x 0.059", 1 pc	A 91 99 151
	230	for slide-in, matt anodized aluminum, 5.177" x 6.228" x 0.059", 1 pc	A 91 99 171
	230	for screw fixing, matt anodized aluminum, 5.055" x 5.996" x 0.079", 1 pc	A 91 99 172
② Assembly kit	150	4 screws for front panel fixing	A 91 99 004
	230	4 screws for front panel fixing	A 91 99 006
③ Assembly kit	150, 190	4 screws for case assembly (for additional locking)	A 91 99 003
④ Strain relief	150, 190, 230	1 strain relief, 2 screws	A 91 99 005
⑤ Set of battery clips*1	150, 190	nickel-plated, for 4 x 1.5 V mignon cells (AA)	A 91 90 013
⑥ Card guide	150, 190, 230	ABS, for slide-in of PCBs, max. 8 pcs (150) resp. 10 pcs (190, 230)	A 91 99 000
⑦ Tilt foot	150, 190, 230	ABS, off-white, snaps into the base, 1 pc	A 03 50 007
	150, 190, 230	ABS, pebble-gray, snaps into the base, 1 pc	A 03 50 008



• included

*1 complies with DIN EN 60601 (short circuit caused by incorrect insertion of batteries impossible)

NEW PRODUCT