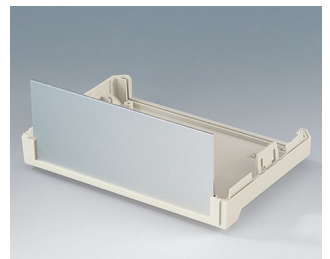
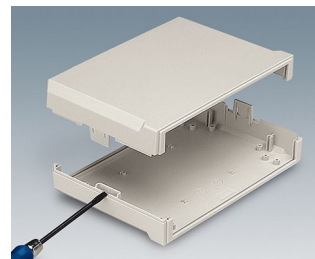
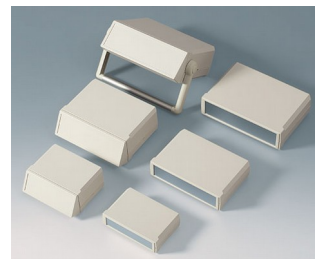


# MOTEC

## Modern desktop enclosures with wide front panels

With their generous dimensions, stylish design and ergonomic control panels, our MOTEC plastic enclosures are designed to distinguish your electronics from more conventional systems.

- stylish range of instrument enclosures
- three plan sizes
- different case heights for individual configurations
- high-quality material ABS (UL 94 HB)
- robust clip-together assembly to minimize your assembly work
- access with flat screwdriver only, for security
- ergonomic, moulded sloping control panel with recessed area for a membrane keypad
- aluminium panels ordered separately
- versions with handle for ergonomically tilted position or carrying
- four non-slip self-adhesive feet included
- protection class IP 40
- internal guide grooves for the vertical insertion of partitions and PCBs
- internal screw pillars for PCBs etc.



# MOTEC

## Applications and Examples

- Measuring and control technology
- Feedback control
- Peripheral devices and interfaces, switchboxes, modems
- Laboratory equipment
- Medical and wellness devices



Rhinospirometer



Telemetry system with cordless sensors

## Customising Options

What do you still need for your own very personal product? We can supply enclosures and tuning knobs with all necessary modifications for fitting your electronic components. Customising options for Motec



Machining



Lacquering



Printing



Laser marking



Decor foils



Special material



EMC shielding



Installation / Assembly  
of accessories

# MOTEC

## Select Versions



**B3015117**  
MOTEC S, flat/flat  
ABS (UL 94 HB)  
off-white RAL 9002  
155x105x40mm  
IP 40



**B3015127**  
MOTEC S, flat/high  
ABS (UL 94 HB)  
off-white RAL 9002  
155x105x65mm  
IP 40



**B3015137**  
MOTEC S, high/high  
ABS (UL 94 HB)  
off-white RAL 9002  
155x105x90mm  
IP 40



**B3020117**  
MOTEC M, flat/flat  
ABS (UL 94 HB)  
off-white RAL 9002  
205x140x50mm  
IP 40



**B3020127**  
MOTEC M, flat/high  
ABS (UL 94 HB)  
off-white RAL 9002  
205x140x75mm  
IP 40



**B3020137**  
MOTEC M, high/high  
ABS (UL 94 HB)  
off-white RAL 9002  
205x140x100mm  
IP 40



**B3020147**  
MOTEC M, with handle bar  
ABS (UL 94 HB)  
off-white RAL 9002  
205x140x75mm  
IP 40



**B3023117**  
MOTEC-L, flat/flat  
ABS (UL 94 HB)  
off-white RAL 9002  
235x165x60mm  
IP 40



**B3023127**  
MOTEC L, flat/high  
ABS (UL 94 HB)  
off-white RAL 9002  
235x165x85mm  
IP 40



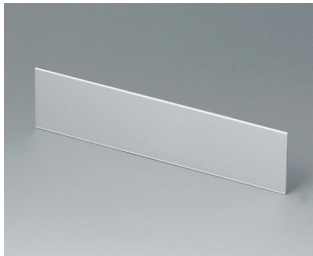
**B3023137**  
MOTEC L, high/high  
ABS (UL 94 HB)  
off-white RAL 9002  
235x165x110mm  
IP 40



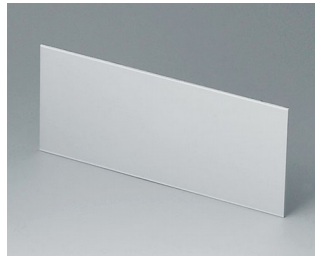
**B3023147**  
MOTEC L, with handle bar  
ABS (UL 94 HB)  
off-white RAL 9002  
235x165x85mm  
IP 40

# MOTEC

## Accessory to complete



**B3115100**  
Front / rear panel S  
Aluminium  
matt anodised  
136x32x1.5mm



**B3115110**  
Front / rear panel S  
Aluminium  
matt anodised  
136x57x1.5mm



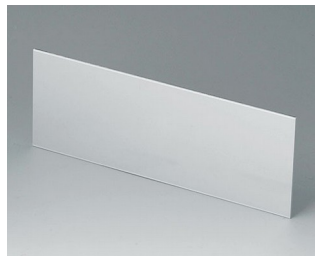
**B3115120**  
Front / rear panel S  
Aluminium  
matt anodised  
136x82x1.5mm



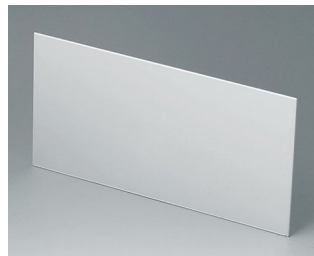
**B3115167**  
Sloping control panel S, flat/high  
ABS (UL 94 HB)  
off-white RAL 9002



**B3120100**  
Front / rear panel M  
Aluminium  
matt anodised  
185x42x1.5mm



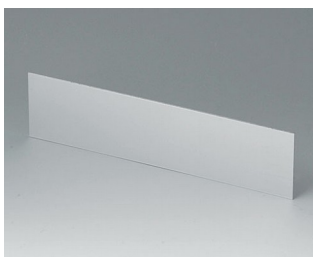
**B3120110**  
Front / rear panel M  
Aluminium  
matt anodised  
185x67x1.5mm



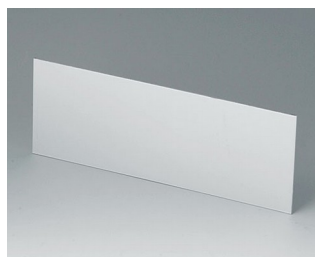
**B3120120**  
Front / rear panel M  
Aluminium  
matt anodised  
185x92x1.5mm



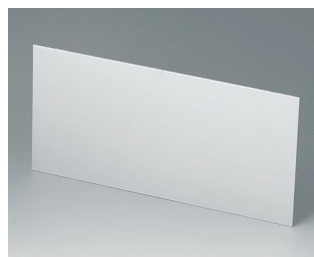
**B3120167**  
Sloping control panel M, flat/high  
ABS (UL 94 HB)  
off-white RAL 9002



**B3123100**  
Front / rear panel L  
Aluminium  
matt anodised  
214x52x1.5mm



**B3123110**  
Front / rear panel L  
Aluminium  
matt anodised  
214x77x1.5mm



**B3123120**  
Front / rear panel L  
Aluminium  
matt anodised  
214x102x1.5mm



**B3123167**  
Sloping control panel L, flat/high  
ABS (UL 94 HB)  
off-white RAL 9002



**B3123177**  
Sloping control panel L,  
high/high  
ABS (UL 94 HB)  
off-white RAL 9002

# MOTEC

## Accessory "screws"



A9199008  
Set of screws

Subject to technical modification without notice. © by OKW Gehäusesysteme, Buchen/Germany.