

HAND-HELD-BOXES

Handheld enclosures for measuring instruments

Tried and tested, simple and economic handheld plastic enclosures.

- designed for mounting digital or analogue LCD display modules
- accessory acrylic windows protect the display modules and are easily fitted with the self-adhesive foils
- battery compartments for C, AA and 9 V cells
- snap-in battery compartment lids for quick battery replacement
- versions with/without switch cap (type P)
- raised front area on the bottom part to accommodate plugs
- tilt foot bar for ergonomic desktop applications
- top recess for mounting membrane keypads (types M, N)
- internal screw pillars for mounting PCBs



HAND-HELD-BOXES

Applications and Examples

- Useful range of handheld cases for mounting digital and analogue instruments
- Ideal for housing measuring and control technology e.g. continuity checkers, volt meters, field intensity meters, digital thermometers, flow meters etc.



Dosemeter

Customising Options

What do you still need for your own very personal product? We can supply enclosures and tuning knobs with all necessary modifications for fitting your electronic components.

Customising options for Hand-Held-Boxes



Machining



Lacquering



Printing



Laser marking



Decor foils



Special material



EMC shielding



Installation / Assembly
of accessories

HAND-HELD-BOXES

Select Versions



A9060007
HAND-HELD-BOX P, Vers. I
ABS (UL 94 HB)
off-white RAL 9002
145x80x36.5mm



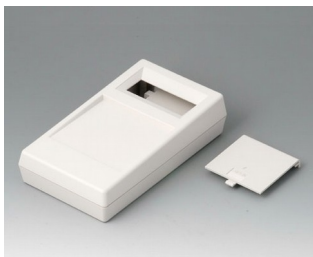
A9060009
HAND-HELD-BOX P, Vers. I
ABS (UL 94 HB)
black RAL 9005
145x80x36.5mm



A9060017
HAND-HELD-BOX P, Vers. II
ABS (UL 94 HB)
off-white RAL 9002
145x80x36.5mm



A9060019
HAND-HELD-BOX P, Vers. II
ABS (UL 94 HB)
black RAL 9005
145x80x36.5mm



A9061017
HAND-HELD-BOX N, Vers. I
ABS (UL 94 HB)
off-white RAL 9002
180x100x44mm



A9061019
HAND-HELD-BOX N, Vers. I
ABS (UL 94 HB)
black RAL 9005
180x100x44mm



A9061117
HAND-HELD-BOX N, Vers. II
ABS (UL 94 HB)
off-white RAL 9002
180x100x44mm



A9061119
HAND-HELD-BOX N, Vers. II
ABS (UL 94 HB)
black RAL 9005
180x100x44mm



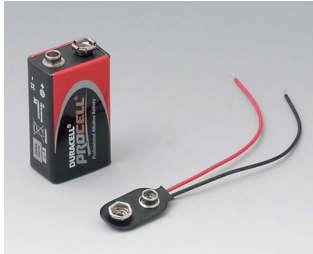
A9062017
HAND-HELD-BOX M, Vers. I
ABS (UL 94 HB)
off-white RAL 9002
145x80x38.5mm



A9062019
HAND-HELD-BOX M, Vers. I
ABS (UL 94 HB)
black RAL 9005
145x80x38.5mm

HAND-HELD-BOXES

Accessory "battery"



A9160003
Plug-in contact, 1 x 9 V (PP3)



A9190013
Set of battery clips, 4 x AA
Steel
nickel-plated

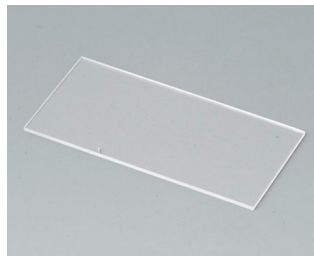


A9250250
Battery spacer
PE foam
50x25x4mm

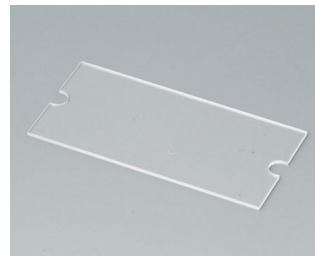
Accessory "protection"



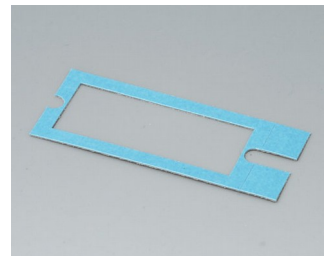
A9160002
Cover plug
black RAL 9005



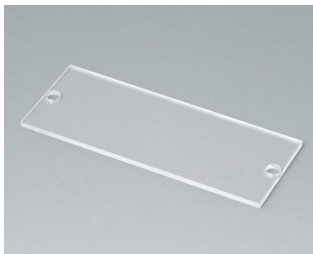
A9160004
Display window P
Acrylic glass
transparent
60x30x1mm



A9160005
Display window M
Acrylic glass
transparent
60x30x1mm



A9160006
Adhesive foil P/M



A9161004
Display window N
Acrylic glass
transparent
90x36x2mm



A9161005
Adhesive foil N

Accessory "carrying"



A9100002
Ring eyelet
PA 6
volcano

HAND-HELD-BOXES

Accessory "screws"



A0305031
Self-tapping screws 2.5 x 6 mm
(PZ1)

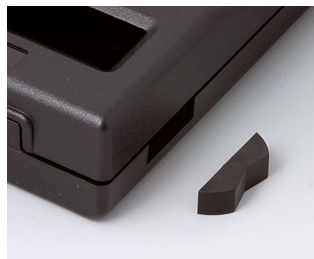


A0306031
Self-tapping screws 3 x 6 mm
(PZ1)

Accessory



A9160007
Switch cap
ABS (UL 94 HB)
off-white RAL 9002



A9160009
Switch cap
PA
black RAL 9005



A9210290
Anti-slide feet 9.5 x 3.8 mm
transparent



A9250807
Tilt foot bar
ABS (UL 94 HB)
off-white RAL 9002



A9250809
Tilt foot bar
ABS (UL 94 HB)
black RAL 9005



A9250817
Tilt foot bar
ABS (UL 94 HB)
off-white RAL 9002



A9250819
Tilt foot bar
ABS (UL 94 HB)
black RAL 9005



A9361009
Tilt foot bar
Steel
chromed

Subject to technical modification without notice. © by OKW Gehäusesysteme, Buchen/Germany.