



THE PRODUCT

One could not have chosen a more suitable name, for the STAR-KNOBS – like the stars in the sky – they represent the visual highlights of your equipment.

The illumination guides the user to the central user interface and also gives impressive emphasis to innovative equipment design.

The flush-fitting installation in the built-in version, with an attractive transition from the knob to the front of the device, also represents an innovation.

In the surface-mounted version, the knob design makes a great impression thanks to the slight inclination of the body towards the inner axis, thus allowing ergonomically favourable operation.

YOUR ADVANTAGES

Aesthetically sophisticated knob design.

Two installation versions (surface-mounted or flush-fitting). Two sizes each.

Optional illumination possible with modern, energy-saving SMD LED technology.

Ergonomic design features: finger recess (lid), knurls (knob) and inclined body (knob).

Tried and tested collet fixture system with secure fit on the axle.

Taking account of minimum batch sizes, we can also produce our STAR-KNOBS range in special colours. Tell us what you would like and what quantities you require.

APPLICATIONS

For rotary potentiometers or rotary pulse generators with round shaft ends in accordance with DIN 41 591, including touch function.

Measuring and control technology. Medical field and laboratory technology. Heating and air conditioning.

MATERIAL

Knobs and assembly kits
PA 6 reinforced / PC translucent.
Cover PA 6 reinforced.
Please refer to specifications on page 29.

Knobs

- Nero, NCS S 9000-N
- Volcano, NCS S 5502-G
- Diamond
- Ruby
- Emerald
- Sapphire

Covers

- Nero, NCS S 9000-N
- Volcano, NCS S 5502-G

Individual illumination

white backlight

- Diamond
- Ruby
- Emerald
- Sapphire

RGB backlight

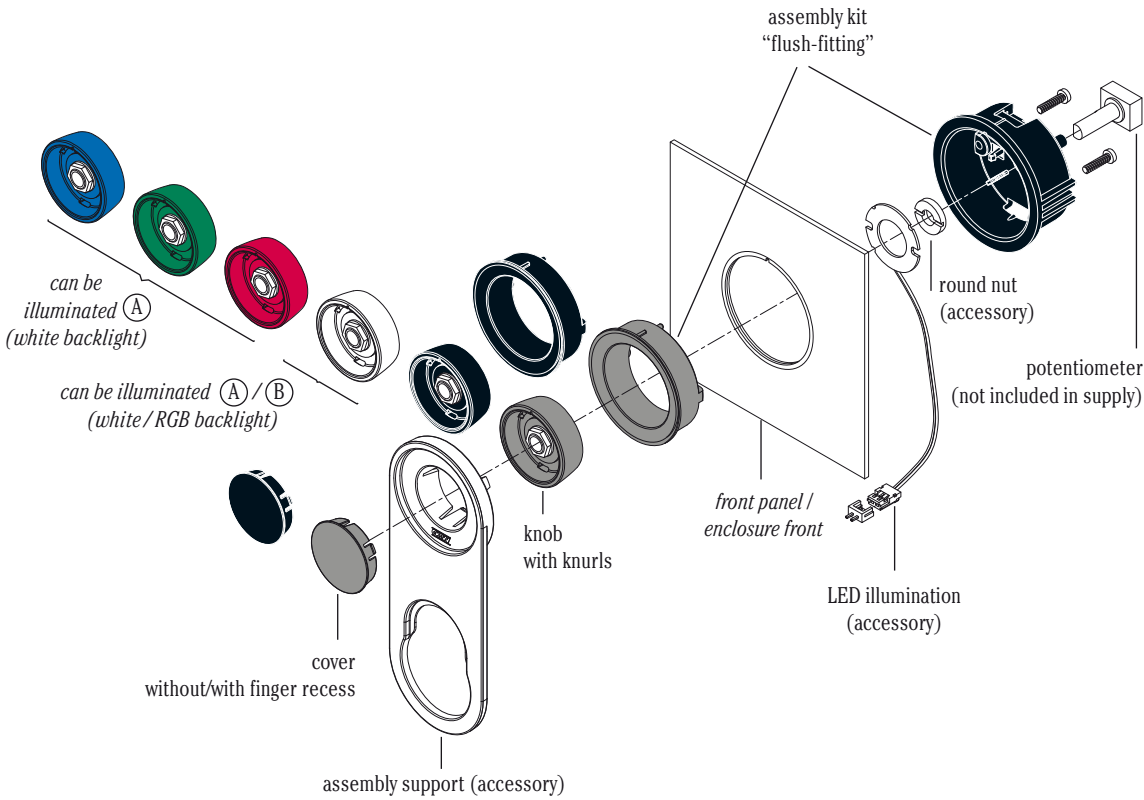
- RGB + white

(individual colour adjustments possible)



VARIANTS

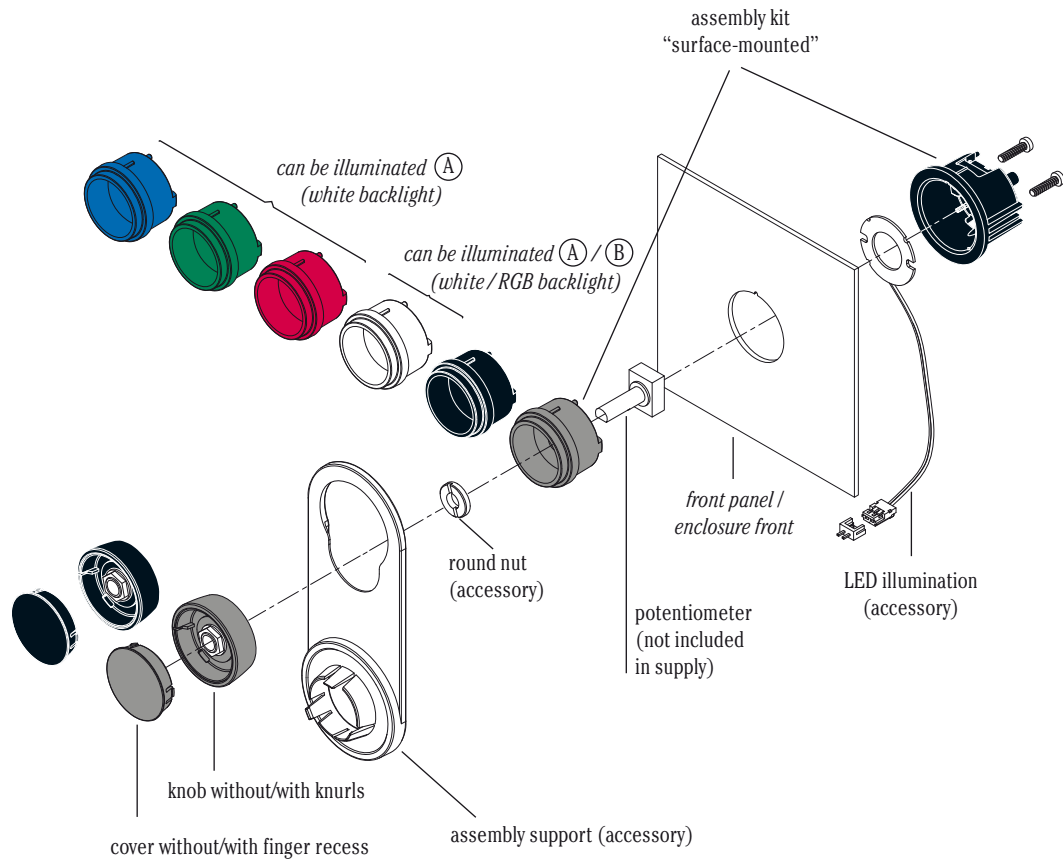
STAR-KNOBS



"FLUSH-FITTING"



For individual illumination, please order the *knob in translucent*. For LED illumination (A) / (B) see accessories page 7.



"SURFACE-MOUNTED"



For individual illumination, please order the *assembly kit of the surface-mounted version in translucent*. For LED illumination (A) / (B) see accessories page 7.

KNOBS

PA		PC*1		Knob ø	Borehole D	Colour	Torque (Nm)		Dim. in mm
							assembly	function	
B 80 33 068	B 81 33 068			33	6 mm		1.8	1.5	
B 80 33 069	B 81 33 069								
		B 82 33 061	B 83 33 061						
		B 82 33 063	B 83 33 063						
		B 82 33 065	B 83 33 065						
		B 82 33 066	B 83 33 066						
B 80 33 638	B 81 33 638			1/4"	6 mm		1.8	1.5	
B 80 33 639	B 81 33 639								
		B 82 33 631	B 83 33 631						
		B 82 33 633	B 83 33 633						
		B 82 33 635	B 83 33 635						
		B 82 33 636	B 83 33 636						
B 80 41 068	B 81 41 068			41	6 mm		2.0	1.5	
B 80 41 069	B 81 41 069								
		B 82 41 061	B 83 41 061						
		B 82 41 063	B 83 41 063						
		B 82 41 065	B 83 41 065						
		B 82 41 066	B 83 41 066						
B 80 41 088	B 81 41 088			8 mm	6 mm		2.3	1.7	
B 80 41 089	B 81 41 089								
		B 82 41 081	B 83 41 081						
		B 82 41 083	B 83 41 083						
		B 82 41 085	B 83 41 085						
		B 82 41 086	B 83 41 086						

COVERS

		For knob ø	Colour	Dim. in mm				without finger recess		with finger recess	
				a	b	c	d				
B 86 33 008	B 86 33 108	33		29	28	9	1.7				
B 86 33 009	B 86 33 109										
B 86 41 008	B 86 41 108	41		37	36	11	1.7				
B 86 41 009	B 86 41 109										

ASSEMBLY KIT

flush-fitting version	surface-mounted version	For knob ø	Colour visual parts*2	Dim. in mm	
				flush-fitting version	surface-mounted version
B 87 33 118	B 87 33 218	33		for front panel cutouts see drawings on the internet (panel thickness min 1 mm, max. 3 mm)	
B 87 33 119	B 87 33 219				
	B 87 33 201				
	B 87 33 203				
	B 87 33 205				
	B 87 33 206				
B 87 41 118	B 87 41 218	41		for front panel cutouts see drawings on the internet (panel thickness min 1 mm, max. 3 mm)	
B 87 41 119	B 87 41 219				
	B 87 41 201				
	B 87 41 203				
	B 87 41 205				
	B 87 41 206				

Minimum components for 1 STAR-KNOBS: 1 knob, 1 cover and 1 assembly kit.

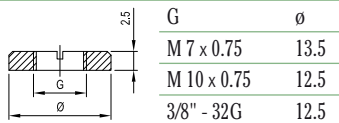
COLOUR STAR-KNOBS

- volcano, NCS S 5502-G
- diamond
- emerald
- nero, NCS S 9000-N
- ruby
- sapphire

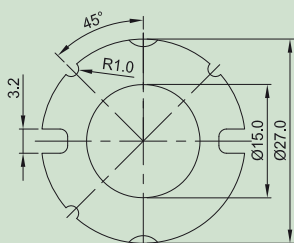
*1 knob can be illuminated individually (flush-fitting version)

*2 can be illuminated individually in translucent (diamond / ruby / emerald / sapphire) version (surface-mounted version)

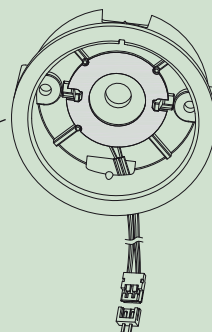
ACCESSORIES

Article	For knob \varnothing	Version / Application	Part-No.
① LED illumination	33, 41	Ⓐ, PCB \varnothing 27 mm with 6 LEDs (white backlight), SMD-technology, connecting cable 100 mm long, 2-pin connector at the end, incl. PCB connector, for knob/assembly kit in translucent (diamond/ruby/emerald/sapphire)	B 87 33 000
		Ⓑ, PCB \varnothing 27 mm with 4 LEDs (RGB backlight), without controller, SMD-technology, connecting cable 150 mm long, 4-pin connector at the end, incl. PCB connector, for knob/assembly kit in translucent (diamond)	B 87 33 002
② Round nut	33, 41	For mounting of potentiometer at the assembly kit.	
			A 62 07 009
			A 62 10 009
			A 62 95 009
③ Spanner	33, 41	For tightening round nuts.	A 63 00 000
④ Assembly support	33	For assembly and adjusting of "flush-fitting" and "surface-mounted" versions.* ³	B 87 33 001
	41	For assembly and adjusting of "flush-fitting" and "surface-mounted" versions.* ³	B 87 41 001

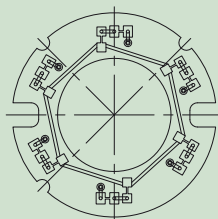
PCB with LED illumination (①) – for power supply units with 5 V



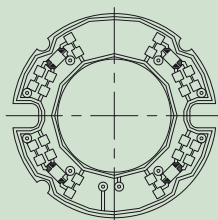
holder from assembly kit
"flush-fitting" version



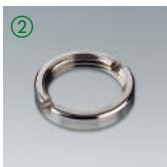
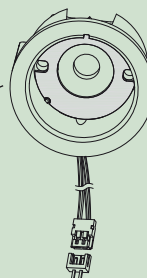
Ⓐ "white backlight"



Ⓑ "RGB backlight"



holder from assembly kit
"surface-mounted" version



*³ assembly instruction see our website www.okw.com