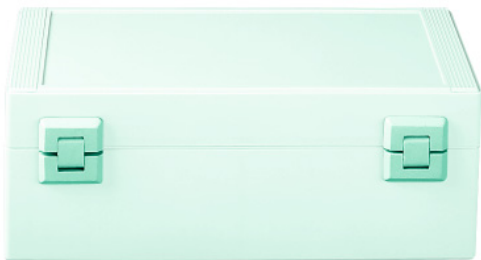




ASSEMBLY INSTRUCTION – INSTRUCTION DE MONTAGE
MONTAGEANLEITUNG



Scharnier

Für Gehäuse 80 x 80 mm
nicht geeignet!

Lieferumfang:

- ① Grundkörper, 4x
- ② Gelenkteil, 2x
- ③ Dichtring, 8x
- ④ Scheibe, 8x
- ⑤ Schraube, 8x

Hinge

Not suitable for case
80 x 80 mm!

Supply:

- ① basic body, 4x
- ② hinge part, 2x
- ③ sealing ring, 8x
- ④ washer, 8x
- ⑤ screw, 8x

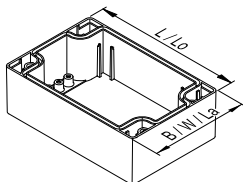
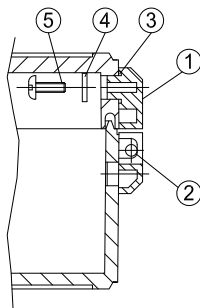
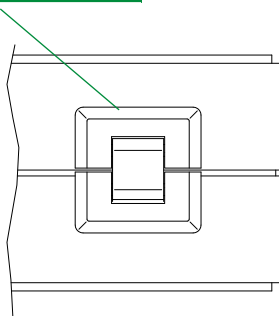
Charnières extérieures

Pas adaptable pour boîtier
80 x 80 mm!

Fourniture :

- ① base, 4x
- ② partie flexible, 2x
- ③ joint d'étanchéité, 8x
- ④ disque, 8x
- ⑤ vis, 8x

C 22 99 088

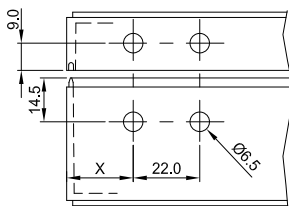


Gehäuse B x L Enclosure W x L Boîtier La x Lo	Bearbeitung Seite L machining side L usinage partie Lo Maß/Dim. „X“	Bearbeitung Seite B machining side W usinage partie La Maß/Dim. „X“
80 x 120	22	—
80 x 160	22	—
80 x 240	22	—
120 x 120	22	32
120 x 200	22	32
120 x 240	22	32
160 x 160	22	32
160 x 240	22	32
200 x 300	22	32
240 x 360	22	32

Bohrbild
Gehäusebreite 80 mm

Machining sketch
case width 80 mm

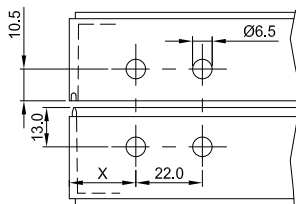
Plan de perçage
du boîtier dim. 80 mm



Bohrbild
Gehäusebreite 120/160/200/240 mm

Machining sketch
case width 120/160/200/240 mm

Plan de perçage
boîtier dim. 120/160/200/240 mm



ASSEMBLY INSTRUCTION – INSTRUCTION DE MONTAGE MONTAGEANLEITUNG

Subject to technical modification,
typographical and other errors
without prior notice.
AS051761 – 11.2007

Odenwälder Kunststoffwerke
Gehäusesysteme GmbH
Friedrich-List-Str. 3
Im Industriegebiet III
74722 Buchen/Germany
www.okw.com